

Instituto Nacional de Estatística

**PC-AXIS reference group meeting,
05-07 September 2007 Helsinki
FINLAND**

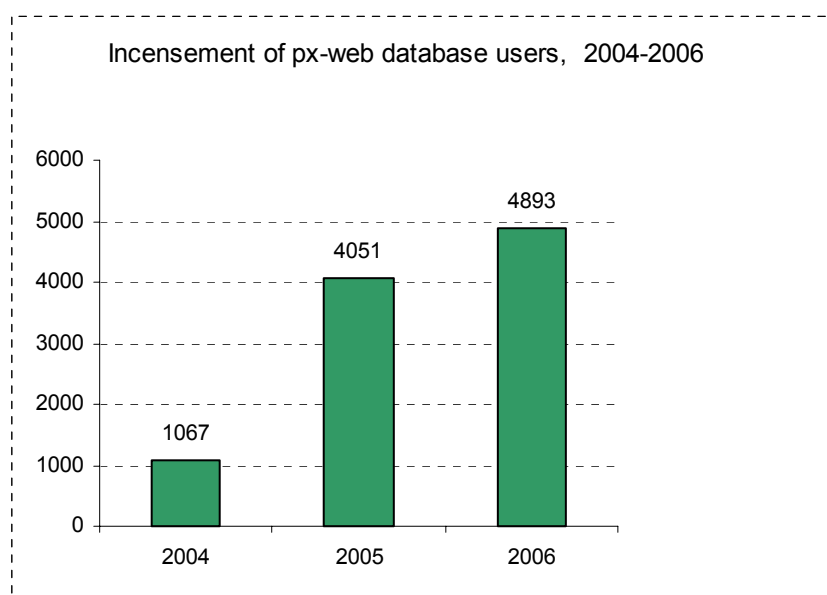
**Report on the use of PC-Axis at
INE - MOZAMBIQUE**

Anselmo Leonardo O. Nhane
Department of Informatics and Information Systems
Statistics Mozambique

1 History

INE Mozambique started using PX-Web in order to give access to basic data directly from the redesigned INE Web page. This was done as a pilot project in order to gain experience with the PC-Axis product family. Initially, the PX-files, Created using PX-Make, were sourced from INE Yearbook. This created a minimal database covering the following subject areas: Population, Geography, Trade, National Accounting and Consumer Price Index. In trying to market the INE Portal and the PC Axis database to users, we have given, in 2005, training on the use of the database for government institutions as well as other organizations. Also, we have tried to solicit users' opinions about how to improve the Portal and the database, but not much has come out of this effort.

The numbers of users, as shown in the chart, increased 21% in 2006.



2 Current state-of-affairs

The first implementation had room for improvement. Thus, in the first half of 2006, we migrated to PC-Axis 2005 and at the same time improved the design and layout to better

reflect the overall design of the INE portal (www.ine.gov.mz

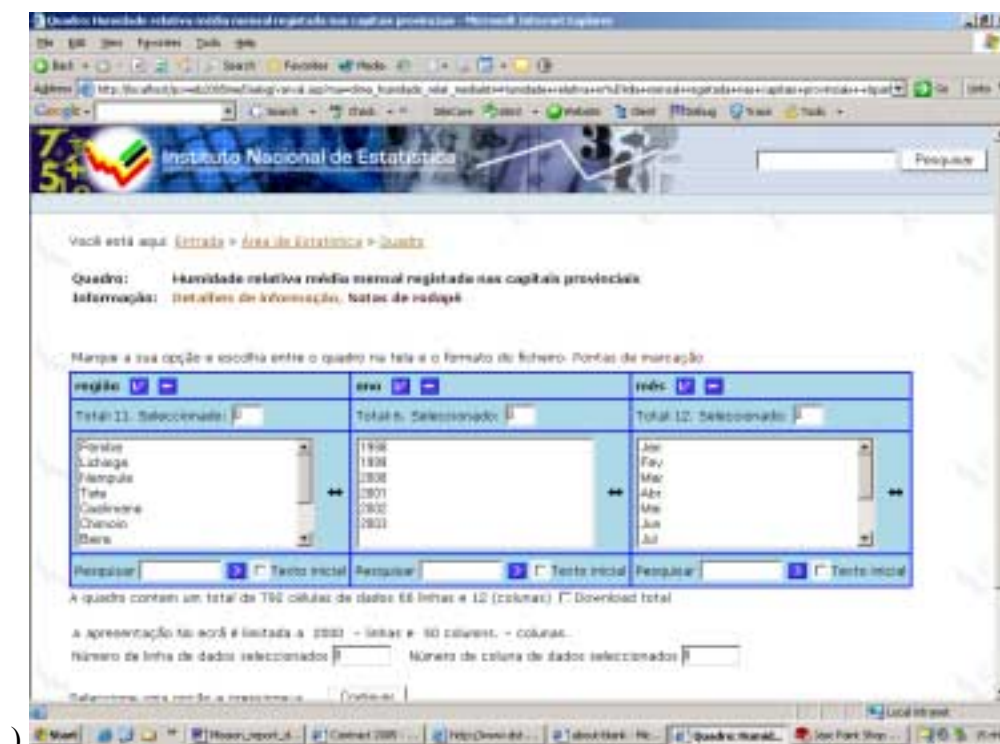


Figure 1: Illustration of PX-Web 2005 after revised design to the INE portal

At the same time, the better search capabilities of PX Web 2005 were made available to users. And, importantly, a large number of users are more interested in **Excel files PC-Axis files**, and the possibility of downloading files in this format was made available to users directly from the table selection menu.



Figure 2: Download total in Excel

The changes in presentation functionality also necessitated changes in the logging function and in the search function as it should also be possible to download Excel files directly from the search menu

Database Link:

<http://www.ine.gov.mz:82/pxweb2005ine/Database/INE/databasetree.asp>

3 Outlook

A number of improvements of the present installation are in progress

3.1 Multiple languages

INE will use the possibility in PX Web 2005 of supporting multiple languages as soon as PX Make supports this. (The rest of INE homepage www.ine.gov.mz supports English and Portuguese).

3.2 New dissemination Database Structure

The information structure of the database closely followed the structure in the Yearbook. This should be improved, and the policy related structure of the DevInfo database (in Mozambique known as ESDEM) was used as inspiration for this work. A pilot database has been created, but the data remains to be migrated.

4 Data Warehouse

INE is trying to consolidate its data in a Statistical Data Warehouse consisting of three parts; Micro Data Warehouse (raw data), Macro Data Warehouse (aggregated data), and Dissemination Database (published data). The Dissemination DB is identical to the current PX Web database, but reorganized to be more 'policy related' as in the DevInfo. The Macro DW will initially be a clone of this database, but for storing data that is not yet published, or should not be published.

2007, 17th August

Department of Informatics and Information Systems
Directorate for Integration, Coordination and External Relations
National Statistics Office
Mozambique