

Consumption of hard coal

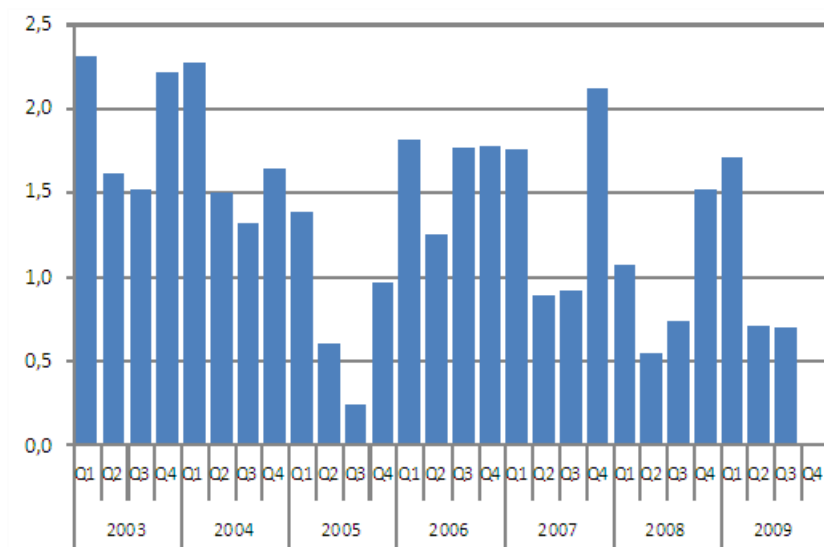
2009, third quarter

Consumption of hard coal increased by 32 per cent in January to September

Approximately 3.1 million tonnes (78,000 TJ) of hard coal were consumed as fuel in the generation of electricity and heat in the first three quarters of 2009. The consumption increased by 32 per cent from the respective period of the previous year. Despite this large increase, consumption in the early part of the year was 14 per cent below the average for the 2000s. In the third quarter of the year the consumption totalled 0.7 million tonnes (17,000 TJ). This was 6 per cent less than in the third quarter of 2008. The growth over the latest 12 months amounted to 4 per cent.

Over the January to September period the consumption of electricity decreased by 9 per cent from twelve months back. During the same time period, 23 per cent less hydro power was produced than in the previous year. In the respective period of 2008, hydro power production reached record figures. This year, it returned to its average level for the 2000s. The diminished supply of hydro power was offset with condensing power produced with hard coal and the consumption of hard coal went up especially in separate production of electricity. The fallen prices of emission rights and hard coal also improved the competitiveness of hard coal in heat and power production compared to production modes with lower emission rates.

Consumption of Hard Coal, million tonnes



Contents

| | |
|--|---|
| Appendix tables | |
| Consumption of Hard Coal..... | 3 |
| Hard Coal Stocks, month-end, million tonnes..... | 3 |

Appendix tables

Consumption of Hard Coal

| Month | Year | | | | | | | | | |
|-----------------|------|------|------|------|------|------|------|------|------|------|
| | 2000 | 2001 | 2002 | 2003 | 2004 | 2005 | 2006 | 2007 | 2008 | 2009 |
| January | 610 | 490 | 580 | 820 | 890 | 380 | 550 | 560 | 410 | 600 |
| February | 450 | 600 | 440 | 750 | 720 | 430 | 590 | 680 | 330 | 610 |
| March | 390 | 640 | 420 | 730 | 660 | 570 | 660 | 510 | 330 | 500 |
| April | 250 | 430 | 320 | 660 | 550 | 280 | 420 | 340 | 230 | 300 |
| May | 290 | 340 | 190 | 570 | 490 | 230 | 370 | 240 | 150 | 220 |
| June | 100 | 260 | 130 | 380 | 460 | 90 | 450 | 300 | 170 | 190 |
| July | 80 | 190 | 210 | 380 | 410 | 50 | 500 | 110 | 170 | 170 |
| August | 220 | 210 | 270 | 490 | 480 | 90 | 580 | 300 | 200 | 240 |
| September | 270 | 230 | 450 | 650 | 430 | 90 | 680 | 500 | 370 | 290 |
| October | 380 | 330 | 760 | 700 | 530 | 210 | 660 | 640 | 430 | - |
| November | 400 | 420 | 770 | 700 | 630 | 300 | 660 | 750 | 520 | - |
| December | 470 | 570 | 800 | 800 | 480 | 460 | 450 | 720 | 570 | - |
| 1st-3rd Quarter | 2660 | 3390 | 3020 | 5430 | 5080 | 2230 | 4810 | 3540 | 2350 | 3120 |
| Whole year | 3910 | 4710 | 5360 | 7640 | 6720 | 3200 | 6590 | 5660 | 3870 | - |

Hard Coal Stocks, month-end, million tonnes

| Month | Year | | | |
|-----------|------|------|------|------|
| | 2006 | 2007 | 2008 | 2009 |
| January | 5,0 | 4,4 | 3,6 | 4,2 |
| February | 4,6 | 4,1 | 3,6 | 4,1 |
| March | 4,1 | 4,2 | 3,7 | 4,0 |
| April | 3,9 | 4,4 | 3,7 | 4,2 |
| May | 3,8 | 4,8 | 3,9 | 4,5 |
| June | 3,7 | 4,8 | 4,0 | 4,9 |
| July | 3,4 | 4,9 | 4,1 | 5,2 |
| August | 3,2 | 5,0 | 4,3 | 5,5 |
| September | 3,3 | 4,7 | 4,1 | 5,5 |
| October | 3,5 | 4,5 | 3,9 | .. |
| November | 3,8 | 4,1 | 4,1 | .. |
| December | 4,4 | 3,7 | 4,4 | .. |

Suomen virallinen tilasto
Finlands officiella statistik
Official Statistics of Finland

Energy 2009

Inquiries

Anssi Vuorio 09 1734 2685
Director in charge:
Leena Storgårds

energia@tilastokeskus.fi

www.stat.fi