

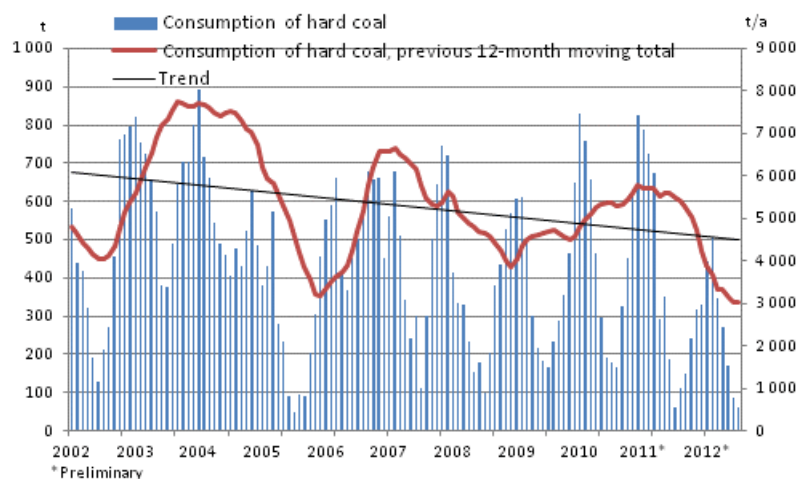
Consumption of hard coal

2012, 3rd quarter

Consumption of hard coal decreased by 35 per cent in January to September

According to Statistics Finland's preliminary data, consumption of hard coal decreased by 35 per cent in January to September this year from the respective period of last year. Its total consumption as fuel in the generation of electricity and heat amounted to 2.2 million tonnes, corresponding to 53 petajoules in energy content. Use of hard coal decreased in plants of separate production of electricity, which consumed 78 per cent less of it than one year earlier in 2011.

Consumption of hard coal, 1,000 tonnes



The data for 2011 and 2012 are preliminary.

In January to September this year, the consumption of hard coal was 42 per cent down on the average for the 2000s. At the end of September 2012, stocks of hard coal amounted to around 4.3 million tonnes, or 11 per cent less than one year earlier. Production of condensing power decreased by 53 per cent in the early part of the year. The better than average water situation that has prevailed in Norway, Sweden and Finland throughout the year has made the production of hydro power for the Nordic market more economical than before.

Contents

Tables

Appendix tables

Appendix table 1. Consumption of hard coal.....3

Appendix table 2. Hard coal stocks, month-end.....3

Appendix tables

Appendix table 1. Consumption of hard coal

Period	2011*	2012*	Annual change %
	Quantity (1000 t)	Quantity (1000 t)	
January	790	442	-44
February	727	508	-30
March	675	345	-49
April	292	271	-7
May	353	172	-51
June	186	88	-53
July	62	63	1
August	113	90	-20
September	148	204	38
October	240	.	.
November	319	.	.
December	332	.	.
1.quarter	2,192	1,295	-41
2.quarter	831	531	-36
3.quarter	323	357	11
4.quarter	891	.	.
January-March cumulative	2,192	1,295	-41
January-June cumulative	3,022	1,826	-40
January-September cumulative	3,345	2,183	-35
January-December cumulative	4,236	.	.

1) *Preliminary

Appendix table 2. Hard coal stocks, month-end

Period	2012*	Annual change %
	Quantity (1000 ton)	
January	4,426	44
February	4,084	54
March	3,919	57
April	3,904	43
May	3,993	29
June	4,118	16
July	4,202	1
August	4,271	-6
September	4,349	-11
October	.	.
November	.	.
December	.	.

1) *Preliminary

Inquiries

Bate Ismail 09 1734 3429
Director in charge:
Leena Storgårds
energia@stat.fi
www.stat.fi/energy
Source: Consumption of hard coal, Statistics Finland