

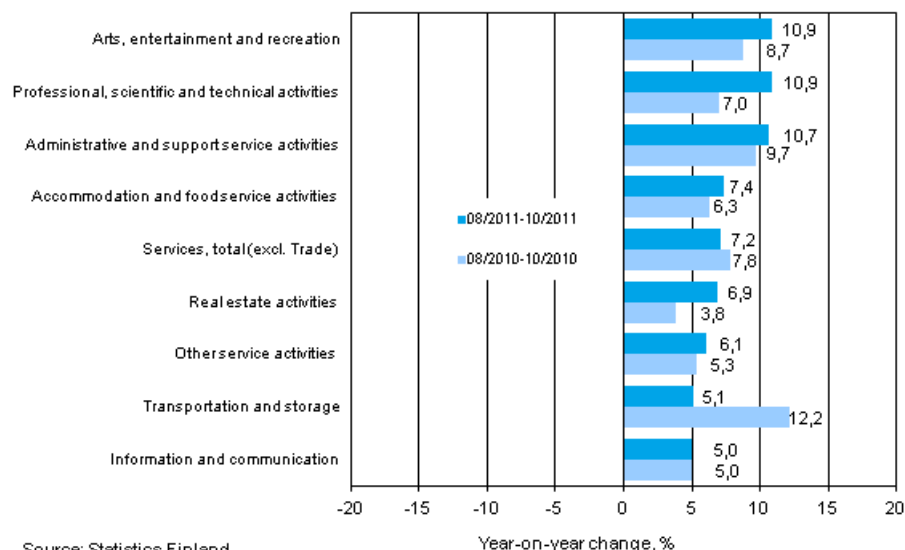
Turnover in service industries

2011, October

Turnover in service industries grew by 7.2 per cent in August to October

Turnover in service industries grew by 7.2 per cent in August to October from the corresponding time period of the year before. One year previously turnover in service industries grew by 7.8 per cent. Services are here examined exclusive of trade and the data have been adjusted for working days by eliminating the effects of calendar variations from them.

Three months' year-on-year change in turnover in services (TOL 2008)



Turnover in service industries grew fastest in enterprises in the industry of arts, entertainment and recreation, and in professional, scientific and technical activities. Turnover in enterprises in both industries was up by 10.9 per cent year-on-year. Turnover in administrative and support service activities enterprises also grew by over 10 per cent from the year before. The growth of turnover was slowest in information and communications activities and in transportation and storage.

Contents

Tables

Appendix tables

Appendix table 1. Year-on-year change in turnover by industry, % (TOL 2008).....3

Figures

Appendix figures

Appendix figure 1. Turnover of service industries, trend series (TOL 2008).....4

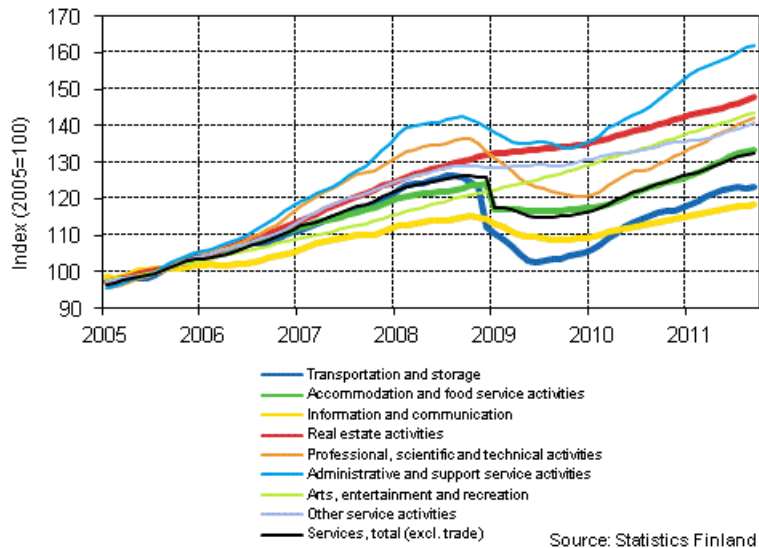
Appendix tables

Appendix table 1. Year-on-year change in turnover by industry, % (TOL 2008)

	Year-on-year change by three-month period, %				Cumulative year-on-year change, %	Year-on-year change in the latest month, %
	11/10-01/11	02-04/2011	05-07/2011	08-10/2011		
HIJLMNRS Other service activities total	8,8	8,2	7,3	7,2	7,6	7,1
H Transportation and storage	11,4	10,8	8,6	5,1	8,5	6,3
I Accommodation and food service activities	7,2	8,0	8,8	7,4	8,3	6,2
J Information and communication	4,8	4,6	5,0	5,0	4,8	4,3
L=68 Real estate activities	7,4	6,0	3,4	6,9	5,2	6,5
M Professional, scientific and technical activities	10,6	9,7	8,4	10,9	9,9	11,0
N Administrative and support services activities	13,7	12,2	11,4	10,7	11,8	10,2
R Arts, entertainment and recreation	7,6	5,4	3,3	10,9	6,9	12,8
S Other service activities	4,4	1,9	3,8	6,1	4,0	4,5

Appendix figures

Appendix figure 1. Turnover of service industries, trend series (TOL 2008)



Inquiries

Anna Muurainen (09) 1734 2670

Director in charge:

Hannele Orjala

palvelut.suhdanne@stat.fi

www.stat.fi

Source: Turnover of service industries, Statistics Finland