

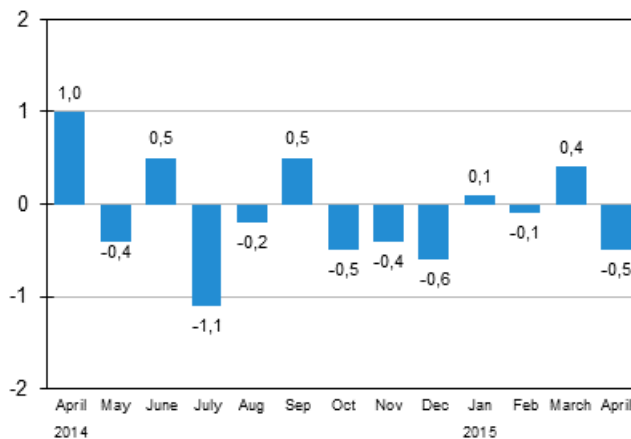
# Turnover estimate of large enterprises

2015, April

## Turnover of large enterprises contracted in April

According to Statistics Finland's preliminary data, the turnover of large enterprises contracted in April 2015. Seasonally adjusted turnover decreased in April by 0.5 per cent from March. In March, seasonally adjusted turnover grew by 0.4 per cent, while in February, turnover was 0.1 per cent lower than in the month before.

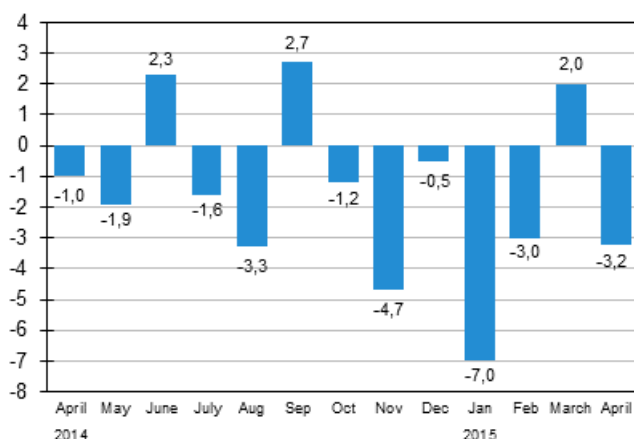
### Seasonally adjusted change in the turnover of large enterprises from the previous month, %



Source: Statistics Finland

The turnover of large enterprises not adjusted for seasonal variation contracted by 3.2 per cent in April 2015 compared with the corresponding period of the previous year. In the January to April period, the turnover of large enterprises diminished by 2.7 per cent from the corresponding period of the year before.

### Annual change in the turnover of large enterprises, %



Source: Statistics Finland

The turnover estimate of large enterprises is based on a sample formed of 2,000 enterprises with the most significant turnover in manufacturing, construction, trade and other service industries. Excluded from the statistics are enterprises engaged in primary production, and bank and insurance activities.

The enterprises described in the statistics make up nearly 70 per cent of the turnover of all enterprises operating in Finland, represent more than one-half of the investments made and employ good 40 per cent of the personnel of all enterprises.

The data can be used for short-term monitoring of development in business activities and the market. Because the economic development of smaller enterprises may differ from large enterprises, the economic situation of the whole enterprise sector cannot be assessed solely based on these statistics.

More detailed data on the development of various industries are published monthly on [the home pages](#) of business trend indicators.

# Contents

## Tables

### Appendix tables

Appendix table 1. Year-on-year change of large enterprises, %.....	4
--	---

## Figures

### Appendix figures

Appendix figure 1. Year-on-year change of large enterprises, trend series.....	5
--	---

Revisions in these statistics.....	6
------------------------------------	---

# Appendix tables

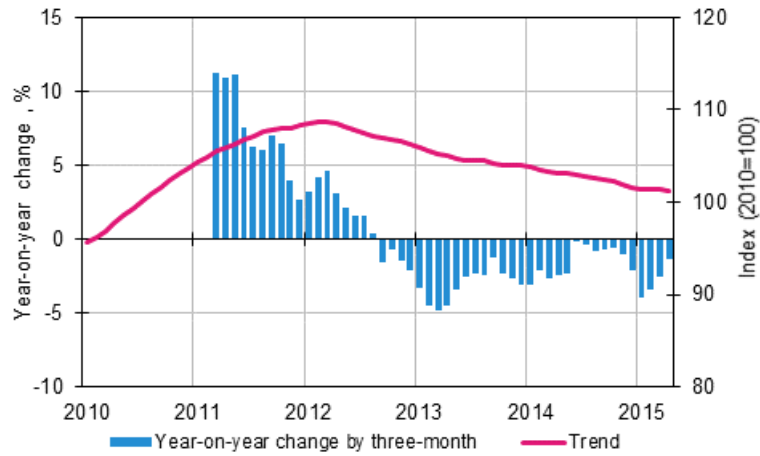
**Appendix table 1. Year-on-year change of large enterprises, %**

	Year-on-year change by three-month period, % <sup>1)</sup>				Cumulative year-on-year change, % <sup>1)</sup>	Year-on-year change in the latest month, % <sup>1)</sup>
	05-07/2014	08-10/2014	11/2014-01/2015	02-04/2015		
Large enterprises	-0,4	-0,6	-3,9	-1,3	-2,7	-3,2

1) Year-on-year change compares the value for an examined time period to the value for the corresponding time period twelve months back.

# Appendix figures

**Appendix figure 1. Year-on-year change of large enterprises, trend series**



Lähde: Statistics Finland

## Revisions in these statistics

The data of the statistics have become revised according to the table below.

### Revisions to data on annual changes of large enterprises<sup>1)</sup>

Reference period	Year-on-year change,%		Revision, percentage point
	1st release	Latest release (2015-05-29)	
11/2014	-4,2	-4,7	-0,5
12/2014	-0,9	-0,5	0,4
01/2015	-7,0	-7,0	0,0
02/2015	-2,8	-3,0	-0,2
03/2015	1,6	2,0	0,4

1) The 1st release refers to the time when data for the reference period were released for the first time. The revision describes the difference of annual change percentages between the first and latest release.

## Inquiries

Aki Niskanen                    029 551 2657  
Jarkko Niemistö                029 551 2951  
Director in charge:  
Hannele Orjala

[palvelut.suhdanne@stat.fi](mailto:palvelut.suhdanne@stat.fi)  
[www.stat.fi](http://www.stat.fi)

Source: Turnover estimate of large enterprises, Statistics Finland