

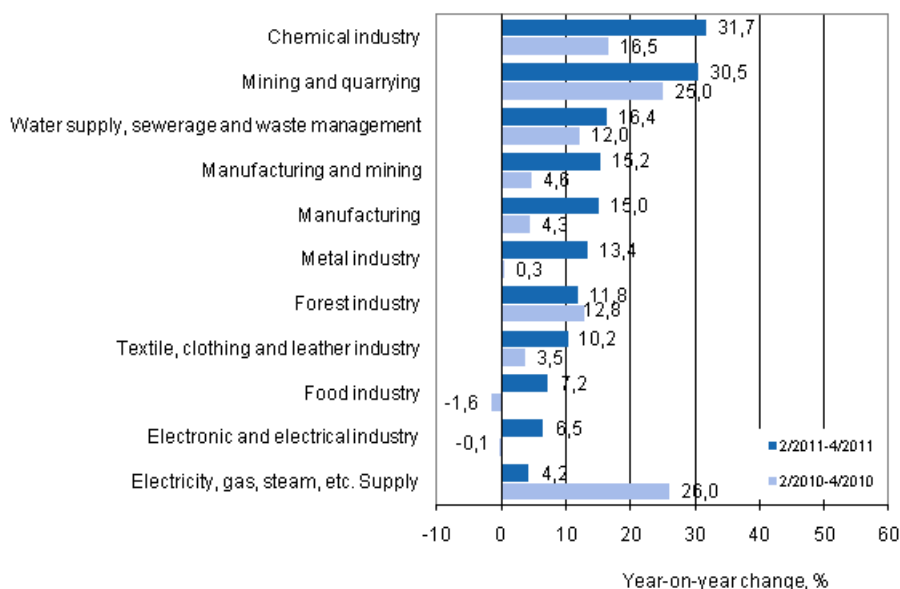
# Index of turnover in industry

2011, April

## Turnover in manufacturing grew by 15 per cent in February to April from the year before

According to Statistics Finland, in the past February to April period turnover in manufacturing was 15.0 per cent up on the corresponding period of the year before. Domestic sales grew by 13.9 per cent and export turnover by 16.0 per cent from one year ago.

### Annual change in turnover in selected manufacturing industries during 2/2011–4/2011 and 2/2010–4/2010, % (TOL 2008)



Source: Statistics Finland

Turnover went up from the corresponding period of the previous year in all sub-industries. The growth was strongest in the chemical industry (31.7%), mining and quarrying (30.5%) and in water supply; sewerage, waste management and remediation activities (16.4%). The growth of turnover was slowest in electricity, gas, steam and air conditioning supply (4.2%) and in the electrical and electronic industry (6.5%).

The index of turnover in industry describes enterprises whose main industry is manufacturing. The calculation of the indices is based on the Tax Administration's value added tax data which are supplemented with data obtained with Statistics Finland's sales inquiry. The monthly turnovers of manufacturing enterprises can vary considerably, especially in the metal industries. The variation is mainly due to invoicing practices. The final invoice for major machinery deliveries and projects may be recorded in the sales of one month, even if the delivery had required the work of several months or years.

# Contents

## Tables

### Appendix tables

Appendix table 1. Year-on-year change in turnover by industry, % (TOL 2008).....	4
--	---

## Figures

### Appendix figures

Appendix figure 1. Trend series on total turnover, domestic turnover and export turnover in manufacturing 1/1995–4/2011.....	5
Appendix figure 2. Trend series on total turnover, domestic turnover and export turnover in the forest industry 1/1995–4/2011.....	5
Appendix figure 3. Trend series on total turnover, domestic turnover and export turnover in the chemical industry 1/1995–43/2011.....	6
Appendix figure 4. Trend series on total turnover, domestic turnover and export turnover in the electronic and electrical industry 1/1995–4/2011.....	6

## Appendix tables

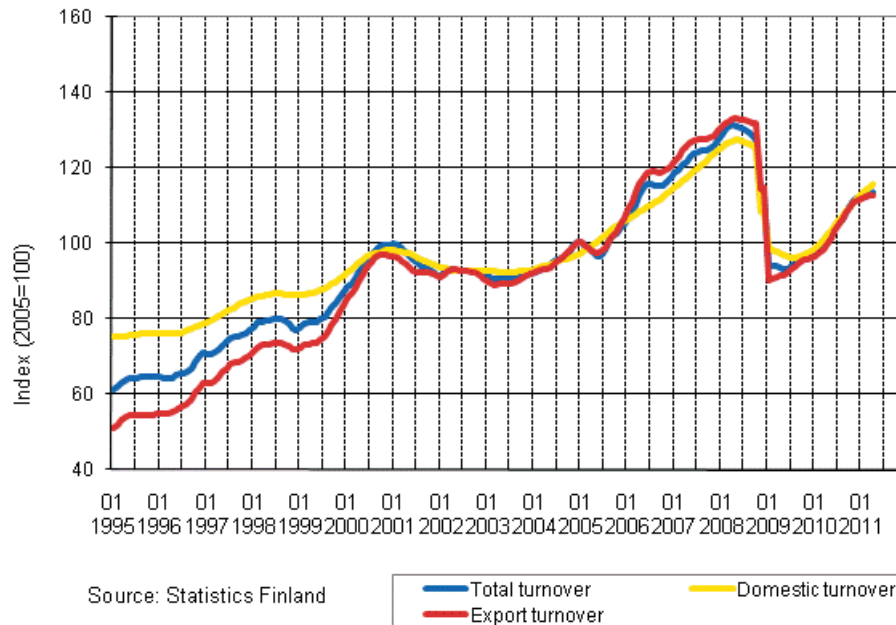
**Appendix table 1. Year-on-year change in turnover by industry, % (TOL 2008)**

	Year-on-year change by three-month period, % <sup>1)</sup>				Cumulative year-on-year change, % <sup>1)</sup>	Year-on-year change in the latest month, % <sup>1)</sup>
	05-07/2010	08-10/2010	11/10-01/11	02-04/2011	01-04/2011	04/2011
Manufacturing (C)	12,9	12,5	19,3	15,0	14,5	10,9
Food industry (10-12)	1,1	2,5	6,9	7,2	6,9	15,5
Textile and clothing industry (13-15)	8,0	11,1	23,3	10,2	9,2	7,8
Forest industry (16-17)	33,6	19,6	18,8	11,8	13,1	-0,3
Chemical industry (19-22)	18,6	20,4	31,7	31,7	28,3	29,8
Electronic and electrical industry (26-27)	-0,1	0,4	9,8	6,5	2,2	9,7
Metal industry (24-30)	8,2	10,3	19,0	13,4	12,8	9,3
Mining and quarrying (B)	28,1	32,2	36,4	30,5	32,6	28,7
Electricity, gas, steam, etc. supply (D)	13,4	15,5	16,8	4,2	2,4	9,8
Water supply, sewerage and waste management (E)	21,5	14,6	23,5	16,4	20,0	8,1

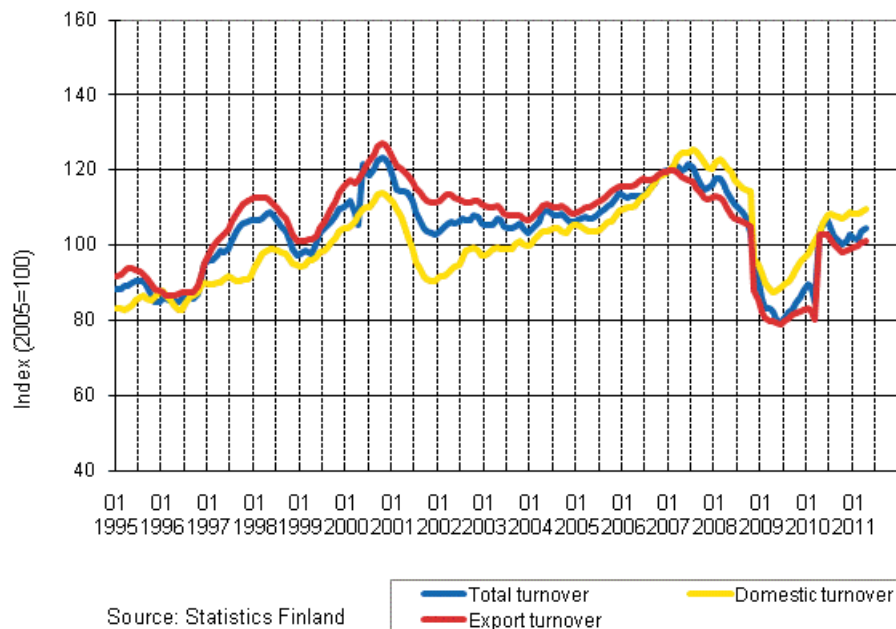
1) Year-on-year change compares the value for an examined time period to the value for the corresponding time period twelve months back.

## Appendix figures

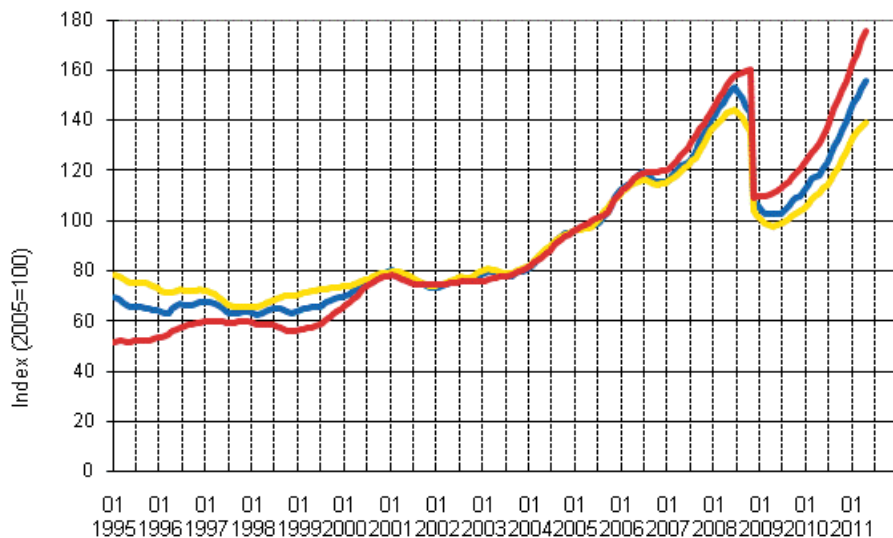
**Appendix figure 1. Trend series on total turnover, domestic turnover and export turnover in manufacturing 1/1995–4/2011**



**Appendix figure 2. Trend series on total turnover, domestic turnover and export turnover in the forest industry 1/1995–4/2011**



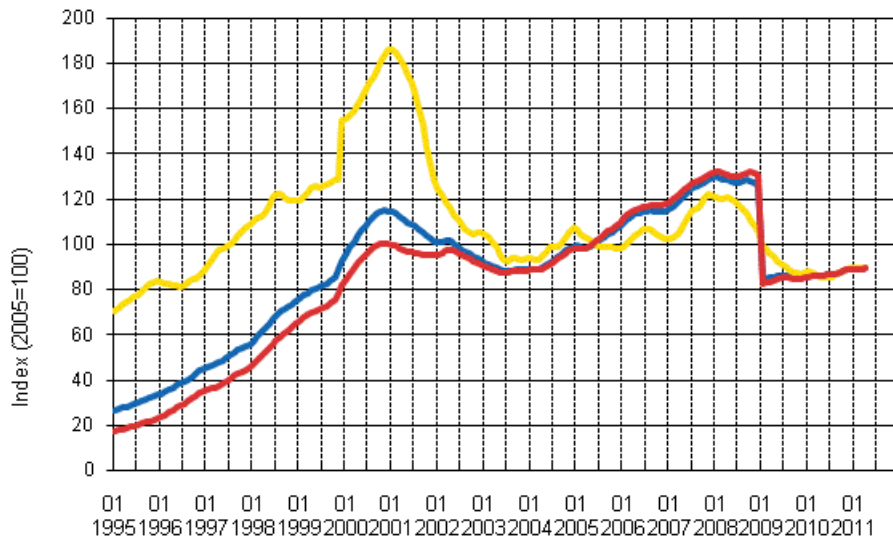
**Appendix figure 3. Trend series on total turnover, domestic turnover and export turnover in the chemical industry 1/1995–4/2011**



Source: Statistics Finland



**Appendix figure 4. Trend series on total turnover, domestic turnover and export turnover in the electronic and electrical industry 1/1995–4/2011**



Source: Statistics Finland



---

Suomen virallinen tilasto  
Finlands officiella statistik  
Official Statistics of Finland

Manufacturing 2011

### Inquiries

Kirsi Ristola (09) 1734 2430

Director in charge:

Hannele Orjala

[myynti.teollisuus@stat.fi](mailto:myynti.teollisuus@stat.fi)

[www.stat.fi](http://www.stat.fi)

Source: Index of turnover in industry 2011, April, Statistics Finland