

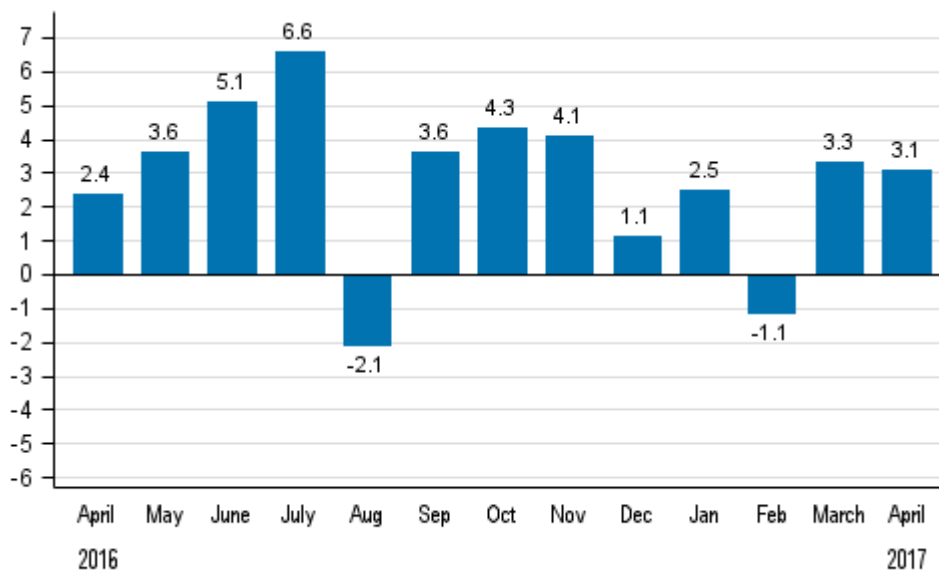
# Volume index of industrial output

2017, April

## Industrial output grew by 3.1 per cent in April year-on year

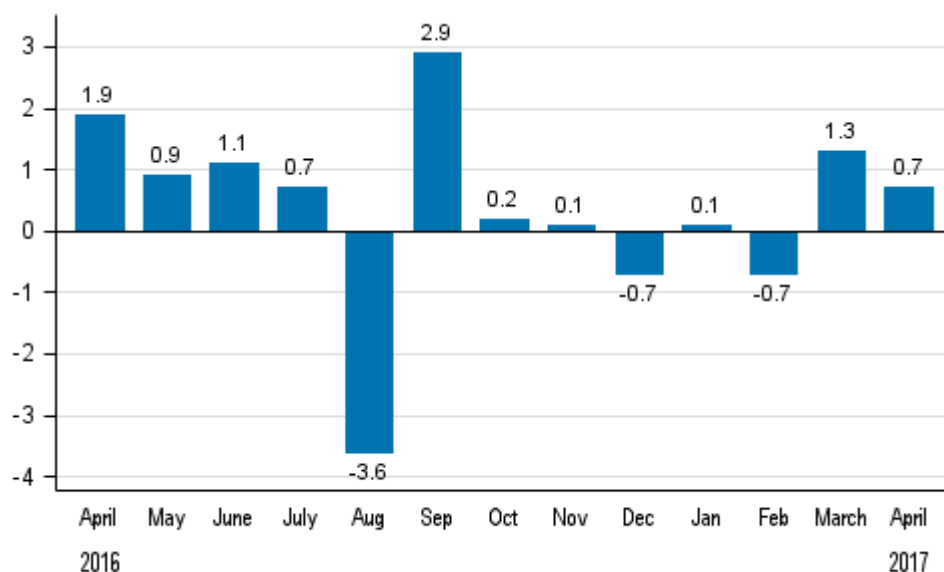
According to Statistics Finland, output of total industries adjusted for working days was 3.1 per cent higher in April 2017 than twelve months earlier. This year's April had three working days fewer than last year. Original output declined by 3.3 per cent in April from one year back. During January to April, working day adjusted output went up by 2.0 per cent from the year before.

### Working day adjusted change in total industrial output (BCDE) from corresponding month previous year, %, TOL 2008



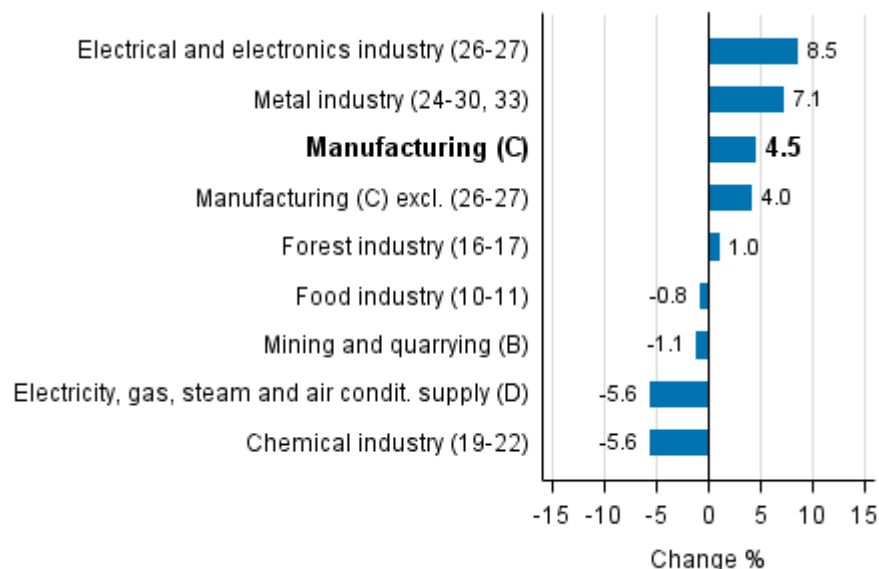
In April, seasonally adjusted output went up by 0.7 per cent from the month before. In March output grew by 1.3 per cent from the previous month and in February output declined by 0.7 per cent from January.

**Seasonally adjusted change in total industrial output (BCDE) from previous month, %, TOL 2008**



In April, output grew in several main industries. Output increased most in the electrical and electronics industry, or by 8.5 per cent. In the metal industry, output grew by 7.1 per cent. In the forest industry output increased by one per cent from the previous year. Output declined most, by 5.6 per cent, in the chemical industry.

**Working day adjusted change in industrial output by industry 4/2016-4/2017, %, TOL 2008**



In April, capacity utilisation rate in manufacturing (C) was 82.4 per cent, or 0.8 per cent lower than one year earlier. In the forest industry, capacity utilisation rate was 92.6 per cent in April, or two percentage points higher than in April 2016. In the metal industry, capacity utilisation rate was 83.4 per cent in April, which was 0.2 per cent higher than one year earlier.

Revised data for April 2017 will be published at 9 am on 10 July 2017 in connection with the release of industrial output data for May 2017. The revision is influenced by the estimation used in the latest release, which concerns the Tax Administration's self-assessed tax data used for enterprises with fewer than 50 employees. Because of the method used, seasonally adjusted figures for previous months may change even if the original figures do not become revised. The seasonally adjusted figures will also be adjusted for working days.

# Contents

Industrial output grew by 3.1 per cent in April year-on year .....	5
--	---

## Tables

Table 1. Volume index of industrial output, value added, original, working day adjusted, seasonally adjusted change percentage.....	6
---	---

## Figures

### Appendix figures

Appendix figure 1. Working day adjusted change percentage of industrial output April 2016 /April 2017, TOL 2008.....	7
Appendix figure 2. Seasonally adjusted change percentage of industrial output March 2017 /April 2017, TOL 2008.....	7
Appendix figure 3. Seasonally adjusted industrial output Finland, Germany, Sweden, France and United Kingdom (BCD) 2005 - 2017, 2010=100, TOL 2008.....	8
Revisions in these statistics.....	9

## Industrial output grew by 3.1 per cent in April year-on year

According to Statistics Finland, output of total industries adjusted for working days was 3.1 per cent higher in April 2017 than twelve months earlier. Seasonally adjusted output grew by 0.7 per cent from March in April.

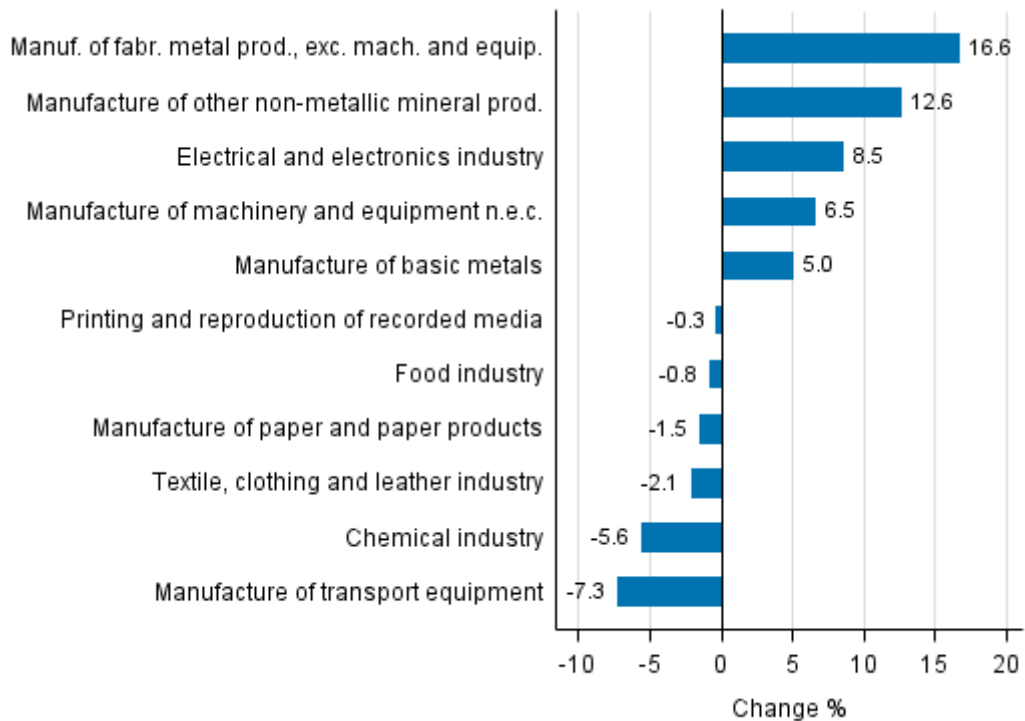
Adjusted for working days, industrial output (C) grew by 4.5 per cent in April from one year back. Seasonally adjusted output grew by 1.3 per cent from March in April.

**Table 1. Volume index of industrial output, value added, original, working day adjusted, seasonally adjusted change percentage**

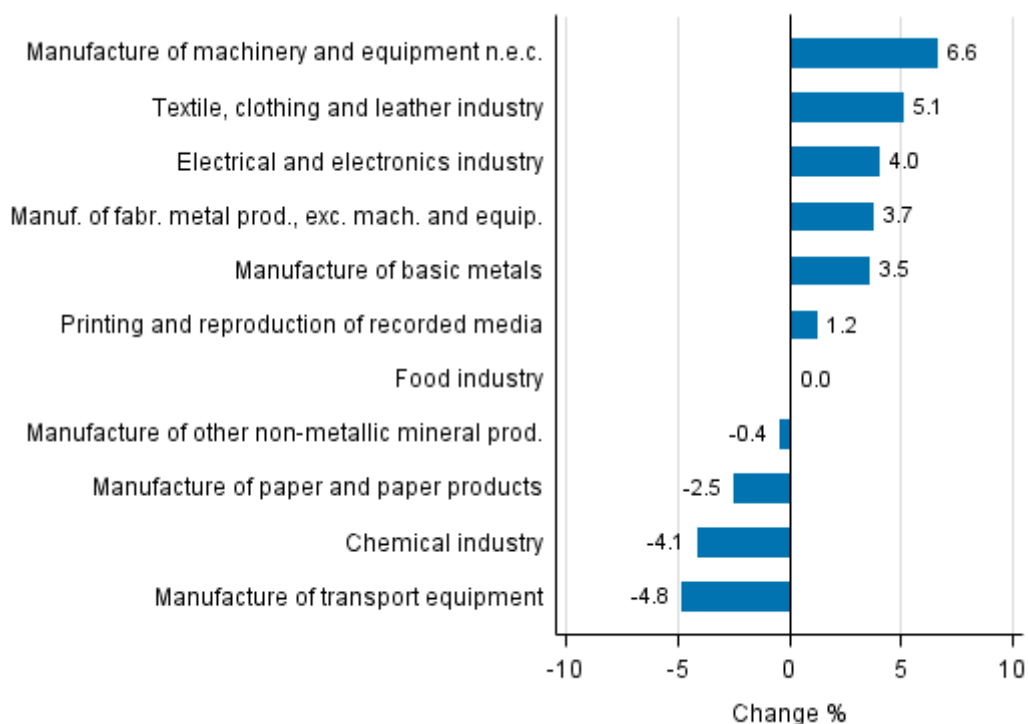
	Value added share	Original change percentage, 2017 APR / 2016 APR	Working day adj. change percentage, 2017 APR / 2016 APR	Seasonal adj. change percentage, 2017 APR / 2017 MAR
Industry (Tol 2008)				
Total industries	100,0	-3,3	3,1	0,7
B Mining and quarrying	1,5	-1,1	-1,1	-7,9
C Manufacturing	84,3	-3,1	4,5	1,3
10 Manufacture of food products	6,9	-9,0	-1,5	-0,6
11 Manufacture of beverages	1,1	-1,9	4,2	5,9
13 Manufacture of textiles	0,6	-10,8	-1,0	1,5
14 Manufacture of wearing apparel	0,4	-31,8	-21,7	3,5
15 Manufacture of leather and related products	0,2	-2,0	-2,0	-6,8
16 Manufacture of wood and of products of wood and cork, except furniture; manufacture of articles of straw and plaiting materials	3,6	-5,0	7,1	5,7
17 Manufacture of paper and paper products	9,8	-1,5	-1,5	-2,5
18 Printing and reproduction of recorded media	1,5	-7,1	-0,3	1,2
23 Manufacture of other non-metallic mineral products	2,9	-0,9	12,6	-0,4
24 Manufacture of basic metals	4,2	0,1	5,0	3,5
25 Manufacture of fabricated metal products, except machinery and equipment	7,7	5,6	16,6	3,7
28 Manufacture of machinery and equipment n.e.c.	10,9	-3,1	6,5	6,6
31 Manufacture of furniture	1,0	0,8	12,4	9,3
32 Other manufacturing	0,7	-0,9	-0,9	-5,7
33 Repair and installation of machinery and equipment	3,9	-0,8	5,7	4,5
D Electricity, gas, steam and air conditioning supply	10,7	-5,6	-5,6	-3,6
E Water supply; sewerage, waste management and remediation activities	3,5	-3,8	0,3	-1,2
36 Water collection, treatment and supply	1,1	-5,6	-5,6	-1,8
Main industrial groupings:				
Raw materials and productive goods	40,7	-1,5	3,8	0,0
Investment goods	28,1	-0,8	7,9	2,5
Durable goods	1,3	-3,5	8,1	4,3
Other consumer goods	13,9	-10,1	-1,4	-0,9
Special indices:				
10-11 Food industry	7,9	-8,0	-0,8	0,0
13-15 Textile, clothing and leather industry	1,2	-15,6	-2,1	5,1
16-17 Forest industry	13,5	-2,5	1,0	-0,4
19-22 Chemical industry	13,7	-5,6	-5,6	-4,1
24-30 Metal industry	38,1	-1,3	7,2	1,9
26-27 Electrical and electronics industry	12,6	-1,3	8,5	4,0
25,28-30,33 Machinery and metal product industry	25,2	-1,4	9,0	3,2
29-30 Manufacture of transport equipment	2,7	-14,7	-7,3	-4,8

# Appendix figures

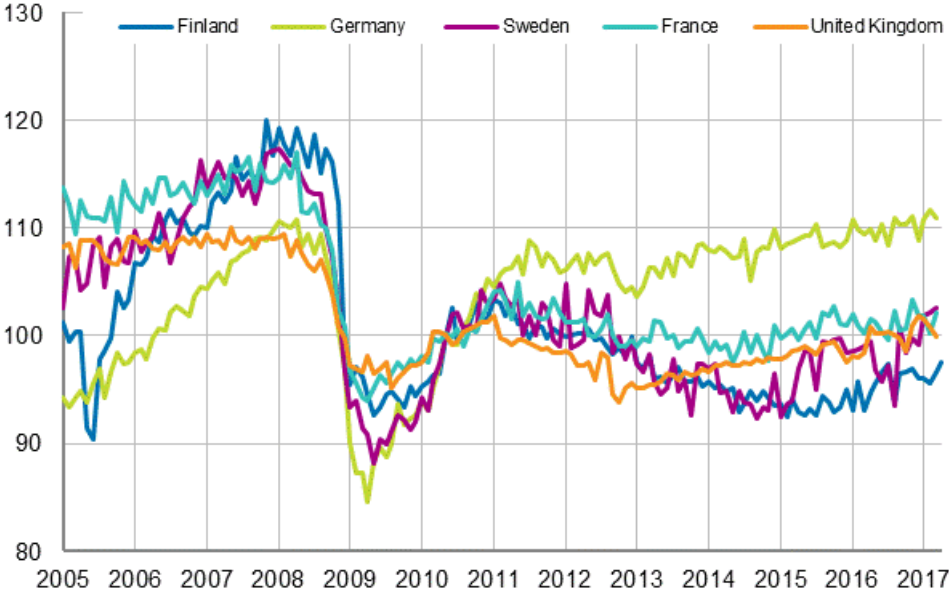
**Appendix figure 1. Working day adjusted change percentage of industrial output April 2016 /April 2017, TOL 2008**



**Appendix figure 2. Seasonally adjusted change percentage of industrial output March 2017 /April 2017, TOL 2008**



**Appendix figure 3. Seasonally adjusted industrial output Finland, Germany, Sweden, France and United Kingdom (BCD) 2005 - 2017, 2010=100, TOL 2008**





## Revisions in these statistics

The data of the original series of industrial output have become revised according to the table below. For more information about data revisions, see Section 3 of the quality description (only in Finnish).

### Revisions to data on annual changes in main industries

Main industries and Statistical reference month		Annual change (%)		Revision (%-point)
		1st release (%)	Latest release (09.06.2017) (%)	
BCDE Total industry	2016 / 11	7,1	7,5	0,4
	2016 / 12	-0,8	-1,0	-0,2
	2017 / 01	4,2	6,9	2,7
	2017 / 02	-0,2	-1,2	-1,0
	2017 / 03	6,5	7,3	0,8
C Manufacturing	2016 / 11	6,8	6,8	0,0
	2016 / 12	-0,8	-1,2	-0,4
	2017 / 01	5,8	8,9	3,1
	2017 / 02	0,5	-0,8	-1,3
	2017 / 03	7,2	8,1	0,9
D Electricity, gas, steam and air conditioning supply	2016 / 11	9,7	9,7	0,0
	2016 / 12	-0,5	-0,5	0,0
	2017 / 01	-7,8	-7,8	0,0
	2017 / 02	-4,3	-4,3	0,0
	2017 / 03	0,1	0,1	0,0
10-11 Food industry	2016 / 11	4,1	4,6	0,5
	2016 / 12	-1,6	-2,4	-0,8
	2017 / 01	5,1	5,5	0,4
	2017 / 02	-1,3	-1,0	0,3
	2017 / 03	4,6	3,7	-0,9
16-17 Forest industry	2016 / 11	3,7	3,6	-0,1
	2016 / 12	1,5	0,5	-1,0
	2017 / 01	2,0	3,5	1,5
	2017 / 02	-4,6	-4,2	0,4
	2017 / 03	3,6	3,9	0,3
19-22 Chemical industry	2016 / 11	14,6	13,0	-1,6
	2016 / 12	-5,3	-3,4	1,9
	2017 / 01	3,9	5,5	1,6
	2017 / 02	7,0	6,8	-0,2
	2017 / 03	10,7	12,5	1,8
24-30, 33 Metal industry	2016 / 11	6,0	6,0	0,0
	2016 / 12	-1,0	-1,5	-0,5
	2017 / 01	7,8	12,4	4,6
	2017 / 02	-0,4	-2,3	-1,9
	2017 / 03	7,5	8,2	0,7
26-27 Electrical and electronics industry	2016 / 11	17,2	11,0	-6,2
	2016 / 12	-8,5	-10,3	-1,8
	2017 / 01	16,9	21,1	4,2
	2017 / 02	0,1	-0,1	-0,2
	2017 / 03	2,9	3,9	1,0

Main industries and Statistical reference month		Annual change (%)		Revision (%-point)
		1st release (%)	Latest release (09.06.2017) (%)	
Manufacturing excl. electrical and electronics industry	2016 / 11	5,3	6,1	0,8
	2016 / 12	0,6	0,8	0,2
	2017 / 01	3,9	7,0	3,1
	2017 / 02	0,5	-0,9	-1,4
	2017 / 03	8,0	8,8	0,8

## Inquiries

Kari Rautio 029 551 2479

Maarit Mäkelä 029 551 3324

Deputy director in charge:

Reetta Moilanen

[volyymi.indeksi@stat.fi](mailto:volyymi.indeksi@stat.fi)

[www.stat.fi](http://www.stat.fi)

Source: Volume Index of Industrial Output 2017, April. Statistics Finland