

D12/27.10.2004

**Uncertain Population of Europe  
Summary Results from a Stochastic Forecast**

**Juha M. Alho and Timo Nikander**

This report is Deliverable 12 belonging to Work Package 6 of an EU 5<sup>th</sup> frame work funded research project Uncertain Population of Europe (UPE), HPSE-CT-2001-00095. The views expressed do not necessarily reflect the views of the European Commission.

## Contents

Guide for interpreting the results	5
EU/EEA	
Table 1. Predictive Distribution of the Total Population in EU/EEA	6
Table 2. Predictive Distribution of the Population in EU/EEA, in Ages 0-19	6
Table 3. Predictive Distribution of the Population in EU/EEA, in Ages 20-64	7
Table 4. Predictive Distribution of the Population in EU/EEA in Ages 65+	8
Figure. Age-Dependency Ratio in EU/EEA	10
AUSTRIA	
Table 1. Predictive Distribution of the Total Population in AUSTRIA	11
Table 2. Predictive Distribution of the Population in AUSTRIA, in Ages 0-19	11
Table 3. Predictive Distribution of the Population in AUSTRIA, in Ages 20-64	12
Table 4. Predictive Distribution of the Population in AUSTRIA in Ages 65+	13
Figure. Age-Dependency Ratio in AUSTRIA	15
BELGIUM	
Table 1. Predictive Distribution of the Total Population in BELGIUM	16
Table 2. Predictive Distribution of the Population in BELGIUM, in Ages 0-19	16
Table 3. Predictive Distribution of the Population in BELGIUM, in Ages 20-64	17
Table 4. Predictive Distribution of the Population in BELGIUM in Ages 65+	18
Figure. Age-Dependency Ratio in BELGIUM	20
DENMARK	
Table 1. Predictive Distribution of the Total Population in DENMARK	21
Table 2. Predictive Distribution of the Population in DENMARK, in Ages 0-19	21
Table 3. Predictive Distribution of the Population in DENMARK, in Ages 20-64	22
Table 4. Predictive Distribution of the Population in DENMARK in Ages 65+	23
Figure. Age-Dependency Ratio in DENMARK	25
FINLAND	
Table 1. Predictive Distribution of the Total Population in FINLAND	26
Table 2. Predictive Distribution of the Population in FINLAND, in Ages 0-19	26
Table 3. Predictive Distribution of the Population in FINLAND, in Ages 20-64	27
Table 4. Predictive Distribution of the Population in FINLAND in Ages 65+	28
Figure. Age-Dependency Ratio in FINLAND	30
FRANCE	
Table 1. Predictive Distribution of the Total Population in FRANCE	31
Table 2. Predictive Distribution of the Population in FRANCE, in Ages 0-19	31
Table 3. Predictive Distribution of the Population in FRANCE, in Ages 20-64	32
Table 4. Predictive Distribution of the Population in FRANCE in Ages 65+	33
Figure. Age-Dependency Ratio in FRANCE	35
GERMANY	
Table 1. Predictive Distribution of the Total Population in GERMANY	36
Table 2. Predictive Distribution of the Population in GERMANY, in Ages 0-19	37
Table 3. Predictive Distribution of the Population in GERMANY, in Ages 20-64	38
Table 4. Predictive Distribution of the Population in GERMANY in Ages 65+	39

Figure. Age-Dependency Ratio in GERMANY	40
GREECE	
Table 1. Predictive Distribution of the Total Population in GREECE	41
Table 2. Predictive Distribution of the Population in GREECE, in Ages 0-19	42
Table 3. Predictive Distribution of the Population in GREECE, in Ages 20-64	43
Table 4. Predictive Distribution of the Population in GREECE in Ages 65+	44
Figure. Age-Dependency Ratio in GREECE	46
ICELAND	
Table 1. Predictive Distribution of the Total Population in ICELAND	47
Table 2. Predictive Distribution of the Population in ICELAND, in Ages 0-19	48
Table 3. Predictive Distribution of the Population in ICELAND, in Ages 20-64	49
Table 4. Predictive Distribution of the Population in ICELAND in Ages 65+	50
Figure. Age-Dependency Ratio in ICELAND	51
IRELAND	
Table 1. Predictive Distribution of the Total Population in IRELAND	52
Table 2. Predictive Distribution of the Population in IRELAND, in Ages 0-19	53
Table 3. Predictive Distribution of the Population in IRELAND, in Ages 20-64	54
Table 4. Predictive Distribution of the Population in IRELAND in Ages 65+	55
Figure. Age-Dependency Ratio in IRELAND	56
ITALY	
Table 1. Predictive Distribution of the Total Population in ITALY	57
Table 2. Predictive Distribution of the Population in ITALY, in Ages 0-19	58
Table 3. Predictive Distribution of the Population in ITALY, in Ages 20-64	59
Table 4. Predictive Distribution of the Population in ITALY in Ages 65+	60
Figure. Age-Dependency Ratio in ITALY	61
LUXEMBOURG	
Table 1. Predictive Distribution of the Total Population in LUXEMBOURG	62
Table 2. Predictive Distribution of the Population in LUXEMBOURG, in Ages 0-19	63
Table 3. Predictive Distribution of the Population in LUXEMBOURG, in Ages 20-64	64
Table 4. Predictive Distribution of the Population in LUXEMBOURG in Ages 65+	65
Figure. Age-Dependency Ratio in LUXEMBOURG	66
THE NETHERLANDS	
Table 1. Predictive Distribution of the Total Population in the NETHERLANDS	67
Table 2. Predictive Distribution of the Population in the NETHERLANDS, in Ages 0-19	68
Table 3. Predictive Distribution of the Population in the NETHERLANDS, in Ages 20-64	69
Table 4. Predictive Distribution of the Population in the NETHERLANDS in Ages 65+	70
Figure. Age-Dependency Ratio in the NETHERLANDS	71
NORWAY	
Table 1. Predictive Distribution of the Total Population in NORWAY	72
Table 2. Predictive Distribution of the Population in NORWAY, in Ages 0-19	73
Table 3. Predictive Distribution of the Population in NORWAY, in Ages 20-64	74
Table 4. Predictive Distribution of the Population in NORWAY in Ages 65+	75
Figure. Age-Dependency Ratio in NORWAY	76

## PORTUGAL

Table 1. Predictive Distribution of the Total Population in PORTUGAL	77
Table 2. Predictive Distribution of the Population in PORTUGAL, in Ages 0-19	78
Table 3. Predictive Distribution of the Population in PORTUGAL, in Ages 20-64	79
Table 4. Predictive Distribution of the Population in PORTUGAL in Ages 65+	80
Figure. Age-Dependency Ratio in PORTUGAL	81

## SPAIN

Table 1. Predictive Distribution of the Total Population in SPAIN	82
Table 2. Predictive Distribution of the Population in SPAIN, in Ages 0-19	83
Table 3. Predictive Distribution of the Population in SPAIN, in Ages 20-64	84
Table 4. Predictive Distribution of the Population in SPAIN in Ages 65+	85
Figure. Age-Dependency Ratio in SPAIN	86

## SWEDEN

Table 1. Predictive Distribution of the Total Population in SWEDEN	87
Table 2. Predictive Distribution of the Population in SWEDEN, in Ages 0-19	88
Table 3. Predictive Distribution of the Population in SWEDEN, in Ages 20-64	89
Table 4. Predictive Distribution of the Population in SWEDEN in Ages 65+	90
Figure. Age-Dependency Ratio in SWEDEN	91

## SWITZERLAND

Table 1. Predictive Distribution of the Total Population in SWITZERLAND	92
Table 2. Predictive Distribution of the Population in SWITZERLAND, in Ages 0-19	93
Table 3. Predictive Distribution of the Population in SWITZERLAND, in Ages 20-64	94
Table 4. Predictive Distribution of the Population in SWITZERLAND in Ages 65+	95
Figure. Age-Dependency Ratio in SWITZERLAND	96

## UNITED KINGDOM

Table 1. Predictive Distribution of the Total Population in UNITED KINGDOM	97
Table 2. Predictive Distribution of the Population in UNITED KINGDOM, in Ages 0-19	98
Table 3. Predictive Distribution of the Population in UNITED KINGDOM, in Ages 20-64	99
Table 4. Predictive Distribution of the Population in UNITED KINGDOM in Ages 65+	100
Figure. Age-Dependency Ratio in UNITED KINGDOM	101

## Guide for Interpreting the Results

Stochastic population forecasts are based on cohort-component book-keeping, just like conventional population forecasts. The difference is that whereas conventional forecasts rely on alternative “high” and “low” variants to describe forecast uncertainty, in stochastic forecasting future values are considered as being random. Their probability distribution is called a *predictive distribution*.

The predictive distributions given in this report are based on *stochastic simulation* using a program PEP. For a description, visit <http://joyx.joensuu.fi/~ek/pep>. A total of 3,000 simulation rounds have been used. To have some intuition about the accuracy of the simulation we note that square-root of 3,000 is approximately 55. Therefore, the standard error of the mean is approximately 2% of the standard deviation.

In this report we give the median and the first and ninth deciles of the predictive distributions for all forecast years. We consider the total population (Table 1), ages 0-19 (Table 2), ages 20-65 (Table 3), and ages 65+ (Table 4), for each country, and for the EU/EEA as a whole.

The interval between the first and ninth decile forms an 80% prediction interval for the age-group, in any given future year. The chance is 10% that the population of the whole EU/EEA is below 395,096,000 in 2030, for example (see Table 1 for EU/EEA). Similarly the chance is 10% that the population is above 437,585,000 in 2030. Thus, the probability is 80% that the population is within the interval [395,096,000, 437,585,000].

The probability statements are meant to be taken individually, not jointly. Since the age-groups are not perfectly correlated one *cannot* obtain a prediction interval for an aggregate (say, ages 0-64) by adding the upper and lower limits of the age-groups out of which it is composed of (say, 0-19 and 20-64). A separate analysis must be made based on the values in the database at <http://www.stat.fi/tup/euupe>.

For each country, and for the EU/EEA as a whole, we have analysed also the predictive distribution of the *age-dependency ratio*, here defined as the ratio of population in ages 0-19 and 65+ to the population in ages 20-64. These results are given as a figure.

**Table 1.** Predictive Distribution of the Total Population in EU/EEA (in 1,000's), in 2004-2050, Median with Lower and Upper Limits of 80% Prediction Intervals.

Year	Median	Lower	Upper
2004	394319	393785	394844
2005	395539	394622	396448
2006	396717	395350	398060
2007	397860	396088	399666
2008	398961	396647	401289
2009	400024	397199	402913
2010	401035	397611	404489
2011	401931	397855	406100
2012	402857	398177	407729
2013	403765	398175	409353
2014	404656	398222	411178
2015	405431	398320	412721
2016	406282	398449	414404
2017	407125	398295	416075
2018	407939	398271	417555
2019	408648	398216	419306
2020	409459	398300	420681
2021	410220	398053	422311
2022	410802	398106	424052
2023	411405	397737	425748
2024	412029	397655	427340
2025	412701	397198	429159
2026	413371	397023	430829
2027	413898	396934	432375
2028	414546	396531	433876
2029	415227	396354	435787
2030	415825	396095	437585
2031	416433	395645	439444
2032	416975	395112	441431
2033	417754	394770	442820
2034	418222	394484	444528
2035	418740	393773	446399
2036	419016	393373	448082
2037	419488	392662	450015
2038	419957	392088	451819
2039	420470	391356	453609
2040	420979	390390	455204
2041	421761	389687	456850
2042	422042	388481	458860
2043	422602	387696	460676
2044	423190	386979	462060
2045	423713	386393	463826
2046	423987	385478	465570
2047	424103	384594	467390
2048	424672	383779	469582
2049	425056	382524	471741
2050	425373	381383	473505

**Table 2.** Predictive Distribution of the Population in EU/EEA, in Ages 0-19 (in 1.000's), in 2004-2050, Median with Lower and Upper Limits of 80% Prediction Intervals.

Year	Median	Lower	Upper
2004	87748	87589	87900
2005	87464	87186	87745

2006	87146	86713	87590
2007	86785	86197	87397
2008	86377	85609	87190
2009	85888	84896	86926
2010	85385	84218	86681
2011	84811	83401	86376
2012	84314	82620	86146
2013	83874	81852	85987
2014	83557	81176	85985
2015	83279	80556	86033
2016	82999	79946	86111
2017	82695	79273	86269
2018	82404	78599	86392
2019	82127	77942	86562
2020	81833	77223	86740
2021	81491	76465	86885
2022	81199	75685	87117
2023	81003	75048	87260
2024	80809	74394	87489
2025	80737	73653	87790
2026	80553	73090	88146
2027	80493	72498	88490
2028	80400	71868	89065
2029	80373	71280	89644
2030	80386	70754	90144
2031	80426	70202	90724
2032	80471	69824	91283
2033	80485	69373	91887
2034	80610	68903	92715
2035	80751	68563	93511
2036	80845	68176	94117
2037	80915	67780	94958
2038	81151	67515	95696
2039	81403	67151	96497
2040	81449	66804	97339
2041	81591	66509	98202
2042	81836	66048	99120
2043	81950	65771	100180
2044	82164	65377	100964
2045	82303	65261	101828
2046	82439	64927	102822
2047	82738	64807	103920
2048	83038	64614	104847
2049	83367	64341	105696
2050	83588	64210	106861

**Table 3.** Predictive Distribution of the Population in EU/EEA, in Ages 20-64 (in 1,000's), in 2004-2050, Median with Lower and Upper Limits of 80% Prediction Intervals.

Year	Median	Lower	Upper
2004	239630	239264	239995
2005	240016	239364	240615
2006	240405	239480	241277
2007	241037	239816	242237
2008	241731	240216	243306
2009	242360	240510	244335
2010	242929	240650	245246
2011	243714	241089	246428

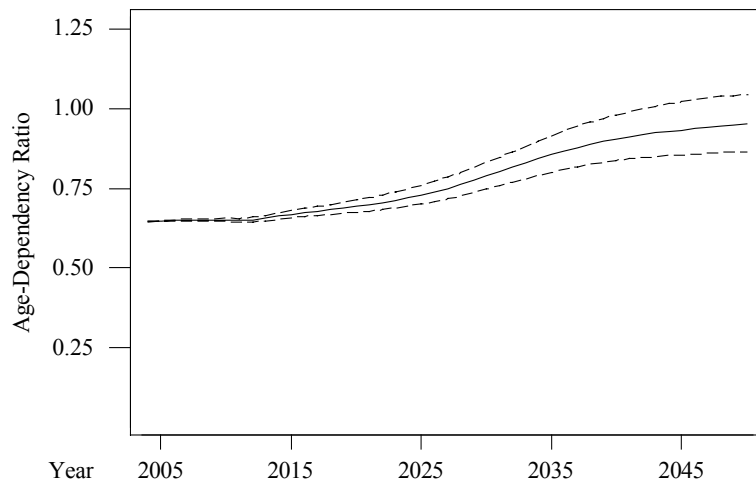
2012	243835	240802	247078
2013	243671	240090	247357
2014	243323	239408	247506
2015	243025	238523	247658
2016	242668	237733	247815
2017	242426	236916	248190
2018	242206	236322	248383
2019	242009	235565	248753
2020	241664	234736	248878
2021	241330	233923	248967
2022	240890	232901	248970
2023	240269	231907	248840
2024	239580	230629	248694
2025	238794	229206	248257
2026	237761	227822	247867
2027	236706	226206	247263
2028	235517	224576	246651
2029	234152	222740	245838
2030	232731	220721	244875
2031	231354	218740	244079
2032	229826	216779	243144
2033	228444	214729	242485
2034	227157	212964	241795
2035	225840	211355	240937
2036	224767	209520	240384
2037	223530	207798	239925
2038	222767	206293	239440
2039	221892	204770	239229
2040	221120	203643	239118
2041	220641	202381	239383
2042	220201	201507	239742
2043	219644	200653	239806
2044	219324	199913	240057
2045	218873	198982	240230
2046	218516	197777	240474
2047	218275	196990	240653
2048	218059	196016	241082
2049	218207	195410	241806
2050	218042	194712	242528

**Table 4.** Predictive Distribution of the Population in EU/EEA in Ages 65+ (in 1,000's), in 2004-205, Median with Lower and Upper Limits of 80% Prediction Intervals.

Year	Median	Lower	Upper
2004	66941	66863	67021
2005	68077	67916	68249
2006	69173	68933	69442
2007	70042	69705	70406
2008	70804	70370	71264
2009	71716	71168	72286
2010	72680	72005	73375
2011	73401	72593	74226
2012	74672	73732	75627
2013	76208	75099	77322
2014	77710	76460	78966
2015	79121	77752	80568
2016	80545	79031	82169
2017	81822	80129	83617

2018	83124	81255	85126
2019	84410	82370	86562
2020	85758	83490	88129
2021	87115	84667	89697
2022	88564	85892	91356
2023	90069	87189	93082
2024	91632	88523	94870
2025	93339	90039	96783
2026	95101	91546	98813
2027	96946	93197	100883
2028	98847	94847	103050
2029	100847	96605	105274
2030	102978	98479	107622
2031	104997	100258	109890
2032	106972	101966	112190
2033	108836	103520	114258
2034	110589	105013	116281
2035	112303	106443	118301
2036	113803	107642	120192
2037	115251	108837	121982
2038	116514	109788	123554
2039	117587	110427	124945
2040	118501	111012	126256
2041	119259	111387	127447
2042	119898	111709	128545
2043	120423	111970	129408
2044	120867	112019	130260
2045	121361	112230	131053
2046	121814	112395	132000
2047	122227	112486	132735
2048	122520	112397	133428
2049	122651	112175	133899
2050	122657	111920	134341

### Age-Dependency Ratio, 2004-2050



**Figure.** Age-Dependency Ratio in EU/EEA and 80 % Prediction Intervals, in 2004-2050.

**Table 1.** Predictive Distribution of the Total Population in AUSTRIA (in 1,000's), in 2004-2050, Median with Lower and Upper Limits of 80% Prediction Intervals.

Year	Median	Lower	Upper
2004	8100	8064	8137
2005	8124	8068	8181
2006	8145	8068	8226
2007	8167	8067	8267
2008	8188	8066	8313
2009	8212	8062	8355
2010	8232	8059	8394
2011	8250	8057	8437
2012	8266	8053	8479
2013	8285	8047	8524
2014	8303	8040	8567
2015	8322	8027	8612
2016	8341	8023	8657
2017	8362	8012	8702
2018	8379	8002	8748
2019	8397	7993	8795
2020	8411	7988	8845
2021	8427	7974	8895
2022	8439	7966	8937
2023	8462	7952	8982
2024	8479	7940	9035
2025	8500	7932	9083
2026	8511	7910	9134
2027	8526	7887	9178
2028	8541	7871	9223
2029	8553	7852	9269
2030	8566	7824	9315
2031	8573	7804	9362
2032	8581	7785	9398
2033	8585	7752	9447
2034	8584	7722	9493
2035	8581	7697	9537
2036	8590	7660	9577
2037	8586	7629	9634
2038	8587	7608	9670
2039	8584	7556	9713
2040	8588	7530	9753
2041	8589	7487	9788
2042	8587	7451	9833
2043	8588	7401	9862
2044	8578	7356	9907
2045	8563	7334	9940
2046	8564	7281	9989
2047	8545	7238	10018
2048	8538	7192	10068
2049	8524	7151	10120
2050	8517	7089	10181

**Table 2.** Predictive Distribution of the Population in AUSTRIA, in Ages 0-19 (in 1.000's), in 2004-2050, Median with Lower and Upper Limits of 80% Prediction Intervals.

Year	Median	Lower	Upper
2004	1805	1795	1816
2005	1792	1777	1808

2006	1779	1758	1802
2007	1766	1737	1796
2008	1753	1716	1790
2009	1737	1692	1782
2010	1721	1667	1774
2011	1702	1640	1765
2012	1681	1609	1755
2013	1661	1579	1744
2014	1643	1550	1739
2015	1627	1523	1734
2016	1615	1499	1734
2017	1602	1472	1735
2018	1593	1449	1739
2019	1586	1431	1748
2020	1581	1414	1762
2021	1578	1398	1769
2022	1577	1384	1789
2023	1571	1365	1805
2024	1568	1346	1818
2025	1565	1329	1834
2026	1564	1314	1854
2027	1559	1302	1874
2028	1557	1285	1890
2029	1555	1270	1908
2030	1553	1257	1930
2031	1551	1241	1950
2032	1549	1227	1971
2033	1546	1212	1990
2034	1539	1199	2006
2035	1535	1185	2019
2036	1529	1166	2038
2037	1522	1151	2051
2038	1518	1139	2075
2039	1508	1122	2090
2040	1499	1102	2103
2041	1495	1083	2124
2042	1486	1065	2147
2043	1478	1049	2166
2044	1479	1034	2189
2045	1477	1019	2212
2046	1467	1001	2231
2047	1458	989	2260
2048	1454	974	2286
2049	1453	959	2305
2050	1449	944	2327

**Table 3.** Predictive Distribution of the Population in AUSTRIA, in Ages 20-64 (in 1,000's), in 2004-2050, Median with Lower and Upper Limits of 80% Prediction Intervals.

Year	Median	Lower	Upper
2004	5032	5006	5058
2005	5023	4984	5064
2006	5009	4956	5066
2007	5007	4936	5077
2008	5016	4931	5101
2009	5030	4929	5128
2010	5041	4926	5153
2011	5074	4945	5199

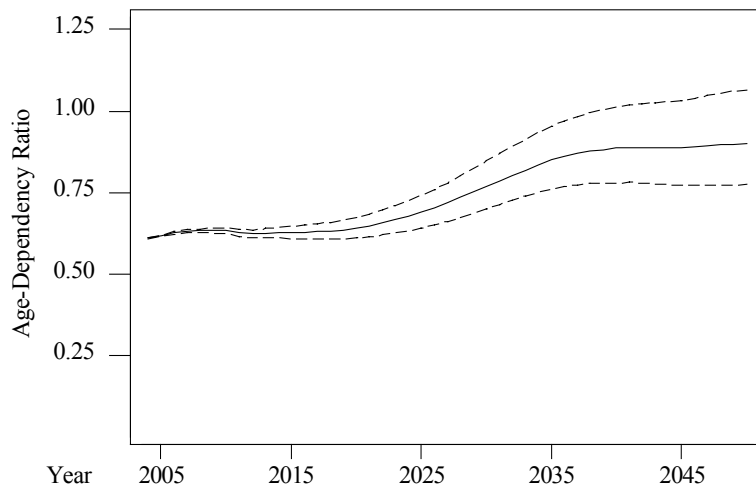
2012	5093	4952	5235
2013	5097	4941	5259
2014	5105	4932	5282
2015	5112	4923	5305
2016	5119	4916	5327
2017	5130	4912	5346
2018	5131	4898	5366
2019	5128	4883	5383
2020	5124	4863	5392
2021	5117	4841	5399
2022	5093	4804	5395
2023	5080	4774	5393
2024	5058	4733	5387
2025	5031	4691	5376
2026	5000	4644	5362
2027	4965	4589	5343
2028	4923	4530	5327
2029	4879	4470	5296
2030	4835	4406	5271
2031	4795	4352	5251
2032	4756	4304	5228
2033	4715	4245	5210
2034	4679	4191	5193
2035	4646	4133	5179
2036	4622	4085	5163
2037	4599	4045	5162
2038	4582	4007	5164
2039	4570	3982	5173
2040	4560	3953	5177
2041	4555	3935	5192
2042	4549	3913	5206
2043	4556	3893	5236
2044	4551	3877	5261
2045	4541	3858	5274
2046	4536	3832	5280
2047	4525	3797	5295
2048	4512	3765	5292
2049	4504	3739	5307
2050	4491	3711	5320

**Table 4.** Predictive Distribution of the Population in AUSTRIA in Ages 65+ (in 1,000's), in 2004-2050, Median with Lower and Upper Limits of 80% Prediction Intervals.

Year	Median	Lower	Upper
2004	1263	1260	1266
2005	1308	1301	1314
2006	1356	1346	1365
2007	1395	1382	1409
2008	1420	1403	1437
2009	1445	1423	1466
2010	1469	1443	1495
2011	1473	1442	1504
2012	1491	1455	1526
2013	1524	1483	1565
2014	1555	1508	1600
2015	1581	1528	1631
2016	1606	1547	1661
2017	1628	1561	1688

2018	1652	1579	1718
2019	1676	1598	1748
2020	1703	1617	1783
2021	1734	1640	1821
2022	1772	1671	1864
2023	1812	1702	1909
2024	1851	1732	1956
2025	1894	1768	2007
2026	1941	1805	2061
2027	1992	1848	2121
2028	2045	1890	2184
2029	2100	1937	2250
2030	2155	1979	2314
2031	2206	2018	2377
2032	2254	2059	2438
2033	2299	2095	2492
2034	2345	2129	2548
2035	2388	2160	2600
2036	2419	2180	2640
2037	2446	2195	2678
2038	2469	2205	2710
2039	2485	2206	2735
2040	2497	2207	2760
2041	2506	2204	2782
2042	2511	2192	2801
2043	2513	2180	2819
2044	2514	2166	2831
2045	2517	2154	2844
2046	2521	2146	2862
2047	2526	2140	2883
2048	2533	2132	2904
2049	2538	2122	2919
2050	2537	2112	2936

### Age-Dependency Ratio, 2004-2050



**Figure.** Age-Dependency Ratio in AUSTRIA and 80 % Prediction Intervals, in 2004-2050.

**Table 1.** Predictive Distribution of the Total Population in BELGIUM (in 1,000's), in 2004-2050, Median with Lower and Upper Limits of 80% Prediction Intervals.

Year	Median	Lower	Upper
2004	10397	10381	10413
2005	10415	10387	10442
2006	10430	10391	10470
2007	10446	10392	10500
2008	10461	10392	10529
2009	10476	10388	10560
2010	10487	10383	10590
2011	10499	10377	10621
2012	10510	10370	10652
2013	10523	10360	10687
2014	10533	10348	10718
2015	10544	10338	10752
2016	10554	10326	10789
2017	10563	10311	10830
2018	10573	10295	10866
2019	10586	10284	10905
2020	10599	10269	10945
2021	10611	10254	10992
2022	10623	10237	11033
2023	10635	10222	11080
2024	10649	10210	11126
2025	10661	10189	11177
2026	10675	10172	11226
2027	10686	10153	11282
2028	10696	10135	11339
2029	10708	10113	11400
2030	10723	10092	11457
2031	10735	10066	11519
2032	10740	10035	11573
2033	10753	10007	11633
2034	10758	9981	11687
2035	10766	9946	11749
2036	10771	9906	11806
2037	10772	9871	11868
2038	10785	9833	11944
2039	10782	9788	12012
2040	10787	9750	12088
2041	10784	9712	12157
2042	10787	9669	12246
2043	10792	9620	12331
2044	10789	9558	12409
2045	10788	9510	12484
2046	10786	9467	12569
2047	10784	9416	12651
2048	10781	9367	12726
2049	10780	9311	12800
2050	10777	9258	12899

**Table 2.** Predictive Distribution of the Population in BELGIUM, in Ages 0-19 (in 1.000's), in 2004-2050, Median with Lower and Upper Limits of 80% Prediction Intervals.

Year	Median	Lower	Upper
2004	2409	2404	2415
2005	2401	2390	2413

2006	2394	2377	2412
2007	2383	2358	2409
2008	2373	2339	2408
2009	2358	2315	2405
2010	2343	2289	2401
2011	2325	2260	2396
2012	2305	2227	2389
2013	2286	2197	2387
2014	2274	2167	2389
2015	2265	2144	2398
2016	2257	2118	2410
2017	2248	2094	2420
2018	2241	2067	2435
2019	2234	2042	2453
2020	2228	2018	2473
2021	2221	1995	2494
2022	2214	1968	2517
2023	2212	1940	2544
2024	2212	1916	2576
2025	2209	1892	2611
2026	2211	1872	2641
2027	2209	1851	2668
2028	2212	1832	2708
2029	2213	1809	2736
2030	2214	1788	2767
2031	2215	1764	2799
2032	2216	1742	2833
2033	2218	1724	2871
2034	2219	1708	2910
2035	2223	1689	2947
2036	2221	1668	2987
2037	2217	1648	3032
2038	2217	1626	3063
2039	2209	1604	3099
2040	2201	1589	3141
2041	2195	1571	3173
2042	2193	1546	3196
2043	2194	1525	3236
2044	2188	1502	3293
2045	2185	1482	3342
2046	2183	1464	3359
2047	2186	1449	3398
2048	2185	1433	3433
2049	2188	1414	3475
2050	2179	1398	3526

**Table 3.** Predictive Distribution of the Population in BELGIUM, in Ages 20-64 (in 1,000's), in 2004-2050, Median with Lower and Upper Limits of 80% Prediction Intervals.

Year	Median	Lower	Upper
2004	6207	6197	6217
2005	6216	6199	6233
2006	6232	6208	6256
2007	6262	6230	6292
2008	6284	6245	6322
2009	6296	6249	6342
2010	6305	6249	6360
2011	6317	6252	6381

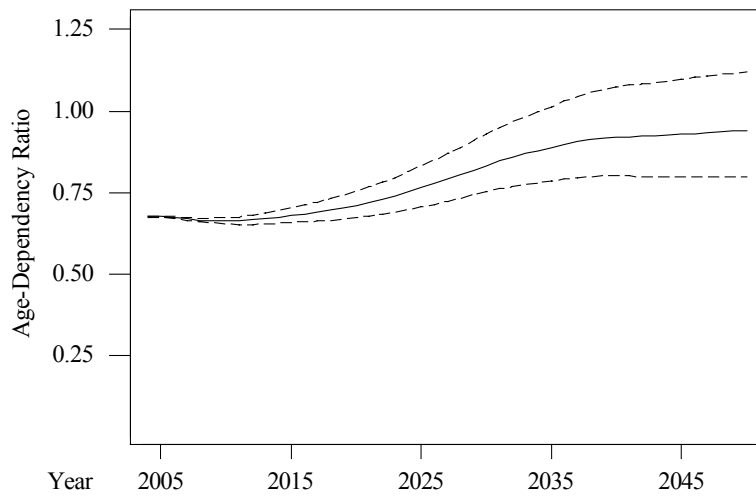
2012	6310	6237	6383
2013	6303	6221	6387
2014	6292	6199	6385
2015	6278	6173	6381
2016	6264	6147	6377
2017	6251	6124	6372
2018	6234	6097	6364
2019	6214	6069	6355
2020	6193	6034	6343
2021	6169	6002	6330
2022	6143	5965	6317
2023	6114	5926	6296
2024	6080	5885	6269
2025	6043	5838	6243
2026	6007	5792	6219
2027	5968	5744	6195
2028	5933	5696	6171
2029	5894	5646	6146
2030	5853	5592	6118
2031	5817	5546	6094
2032	5785	5500	6076
2033	5755	5462	6060
2034	5731	5424	6050
2035	5704	5381	6045
2036	5681	5339	6033
2037	5659	5298	6030
2038	5637	5259	6032
2039	5623	5229	6039
2040	5615	5205	6051
2041	5614	5179	6074
2042	5611	5156	6090
2043	5610	5125	6113
2044	5601	5091	6129
2045	5594	5063	6156
2046	5586	5032	6181
2047	5577	4998	6205
2048	5570	4965	6242
2049	5565	4945	6272
2050	5568	4922	6311

**Table 4.** Predictive Distribution of the Population in BELGIUM in Ages 65+ (in 1,000's), in 2004-2050, Median with Lower and Upper Limits of 80% Prediction Intervals.

Year	Median	Lower	Upper
2004	1781	1777	1785
2005	1797	1789	1806
2006	1805	1792	1817
2007	1801	1783	1819
2008	1805	1781	1828
2009	1820	1791	1849
2010	1839	1803	1874
2011	1857	1815	1899
2012	1895	1844	1943
2013	1931	1871	1986
2014	1967	1899	2029
2015	2000	1924	2069
2016	2035	1948	2111
2017	2066	1970	2151

2018	2103	1998	2197
2019	2139	2028	2243
2020	2178	2057	2290
2021	2218	2088	2341
2022	2260	2122	2393
2023	2304	2154	2447
2024	2351	2188	2505
2025	2399	2228	2564
2026	2446	2262	2625
2027	2495	2301	2685
2028	2544	2339	2745
2029	2593	2376	2806
2030	2645	2414	2872
2031	2692	2446	2930
2032	2734	2475	2986
2033	2771	2494	3035
2034	2803	2511	3077
2035	2832	2529	3118
2036	2863	2541	3162
2037	2892	2554	3203
2038	2915	2557	3242
2039	2931	2557	3275
2040	2944	2554	3303
2041	2950	2546	3326
2042	2952	2540	3345
2043	2956	2533	3368
2044	2962	2522	3389
2045	2968	2516	3409
2046	2975	2507	3433
2047	2981	2501	3452
2048	2983	2491	3465
2049	2981	2477	3478
2050	2978	2465	3487

### Age-Dependency Ratio, 2004-2050



**Figure.** Age-Dependency Ratio in BELGIUM and 80 % Prediction Intervals, in 2004-2050.

**Table 1.** Predictive Distribution of the Total Population in DENMARK (in 1,000's), in 2004-2050, Median with Lower and Upper Limits of 80% Prediction Intervals.

Year	Median	Lower	Upper
2004	5397	5394	5400
2005	5410	5399	5420
2006	5421	5403	5438
2007	5433	5407	5457
2008	5443	5410	5474
2009	5452	5413	5493
2010	5460	5412	5510
2011	5469	5411	5527
2012	5475	5407	5544
2013	5482	5403	5560
2014	5488	5398	5577
2015	5494	5389	5594
2016	5501	5382	5613
2017	5507	5376	5633
2018	5512	5372	5651
2019	5520	5364	5671
2020	5525	5356	5690
2021	5531	5352	5714
2022	5540	5346	5736
2023	5548	5338	5762
2024	5558	5331	5790
2025	5566	5323	5818
2026	5575	5316	5852
2027	5584	5307	5884
2028	5592	5298	5923
2029	5602	5290	5951
2030	5611	5280	5981
2031	5620	5271	6012
2032	5627	5260	6047
2033	5632	5249	6079
2034	5636	5237	6114
2035	5640	5220	6147
2036	5643	5205	6178
2037	5644	5186	6207
2038	5647	5170	6240
2039	5653	5145	6276
2040	5654	5124	6307
2041	5660	5101	6342
2042	5664	5078	6379
2043	5665	5056	6415
2044	5664	5034	6457
2045	5662	5010	6497
2046	5666	4981	6536
2047	5666	4963	6578
2048	5668	4944	6617
2049	5673	4920	6651
2050	5680	4890	6698

**Table 2.** Predictive Distribution of the Population in DENMARK, in Ages 0-19 (in 1.000's), in 2004-2050, Median with Lower and Upper Limits of 80% Prediction Intervals.

Year	Median	Lower	Upper
2004	1311	1309	1312
2005	1319	1315	1324

2006	1325	1317	1332
2007	1328	1317	1339
2008	1330	1315	1345
2009	1328	1309	1348
2010	1323	1298	1348
2011	1315	1285	1345
2012	1306	1269	1342
2013	1292	1251	1335
2014	1278	1230	1329
2015	1263	1207	1320
2016	1247	1184	1313
2017	1234	1162	1310
2018	1221	1141	1305
2019	1211	1122	1306
2020	1200	1104	1309
2021	1191	1085	1312
2022	1184	1068	1318
2023	1181	1053	1329
2024	1178	1040	1343
2025	1176	1028	1358
2026	1177	1016	1374
2027	1178	1001	1391
2028	1181	992	1412
2029	1185	983	1434
2030	1191	977	1457
2031	1197	970	1484
2032	1203	964	1514
2033	1208	957	1536
2034	1214	950	1570
2035	1218	945	1594
2036	1226	940	1618
2037	1232	933	1645
2038	1236	926	1668
2039	1239	917	1694
2040	1241	907	1717
2041	1244	894	1725
2042	1245	884	1747
2043	1245	871	1770
2044	1243	858	1792
2045	1238	846	1808
2046	1235	833	1824
2047	1231	821	1845
2048	1227	808	1854
2049	1223	796	1873
2050	1219	783	1892

**Table 3.** Predictive Distribution of the Population in DENMARK, in Ages 20-64 (in 1,000's), in 2004-2050, Median with Lower and Upper Limits of 80% Prediction Intervals.

Year	Median	Lower	Upper
2004	3281	3281	3282
2005	3277	3271	3284
2006	3274	3264	3284
2007	3270	3255	3284
2008	3261	3243	3278
2009	3250	3228	3272
2010	3237	3211	3264
2011	3223	3192	3254

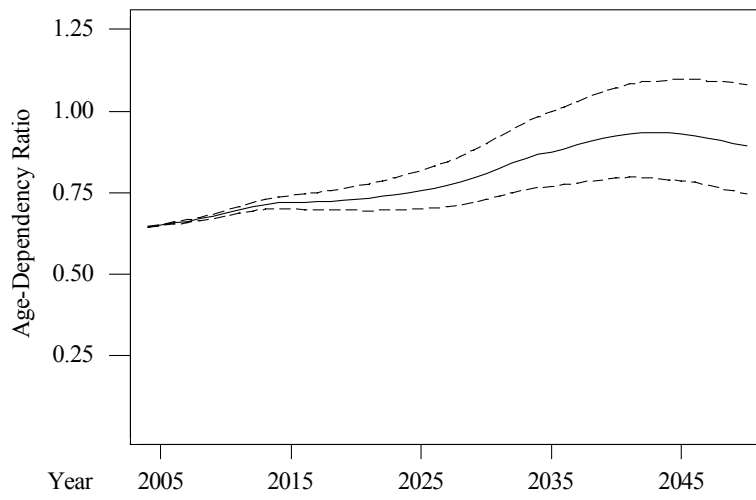
2012	3207	3172	3244
2013	3197	3159	3239
2014	3193	3148	3238
2015	3194	3144	3244
2016	3195	3140	3251
2017	3196	3135	3257
2018	3195	3130	3261
2019	3193	3124	3264
2020	3191	3116	3268
2021	3190	3110	3273
2022	3186	3101	3273
2023	3181	3091	3274
2024	3176	3080	3274
2025	3170	3068	3273
2026	3162	3054	3268
2027	3152	3040	3263
2028	3140	3021	3257
2029	3123	2997	3246
2030	3102	2973	3232
2031	3082	2944	3216
2032	3058	2911	3198
2033	3037	2884	3184
2034	3023	2863	3174
2035	3011	2842	3171
2036	2999	2821	3167
2037	2984	2796	3158
2038	2969	2772	3151
2039	2959	2754	3152
2040	2949	2736	3153
2041	2938	2718	3153
2042	2937	2705	3162
2043	2938	2694	3175
2044	2940	2685	3191
2045	2946	2678	3210
2046	2953	2673	3231
2047	2967	2672	3261
2048	2977	2672	3291
2049	2990	2671	3325
2050	3004	2673	3355

**Table 4.** Predictive Distribution of the Population in DENMARK in Ages 65+ (in 1,000's), in 2004-2050, Median with Lower and Upper Limits of 80% Prediction Intervals.

Year	Median	Lower	Upper
2004	806	803	808
2005	813	808	817
2006	823	816	830
2007	834	824	844
2008	852	839	864
2009	873	857	889
2010	900	881	919
2011	930	907	952
2012	962	936	988
2013	991	961	1021
2014	1015	981	1049
2015	1036	996	1075
2016	1056	1011	1099
2017	1074	1024	1122

2018	1092	1037	1145
2019	1111	1051	1170
2020	1129	1063	1193
2021	1148	1074	1217
2022	1166	1084	1242
2023	1183	1093	1267
2024	1199	1101	1291
2025	1215	1109	1313
2026	1234	1121	1338
2027	1251	1129	1362
2028	1270	1142	1388
2029	1292	1154	1416
2030	1314	1169	1447
2031	1337	1184	1479
2032	1363	1202	1513
2033	1382	1214	1540
2034	1394	1220	1562
2035	1404	1223	1582
2036	1415	1225	1599
2037	1427	1231	1619
2038	1440	1235	1640
2039	1450	1235	1658
2040	1459	1238	1673
2041	1469	1240	1691
2042	1473	1236	1702
2043	1475	1231	1710
2044	1477	1227	1721
2045	1476	1217	1726
2046	1472	1205	1731
2047	1465	1189	1732
2048	1459	1175	1730
2049	1449	1162	1727
2050	1442	1149	1724

### Age-Dependency Ratio, 2004-2050



**Figure.** Age-Dependency Ratio in DENMARK and 80 % Prediction Intervals, in 2004-2050.

**Table 1.** Predictive Distribution of the Total Population in Finland (in 1,000's), in 2004-2050, Median with Lower and Upper Limits of 80% Prediction Intervals.

Year	Median	Lower	Upper
2004	5218	5216	5221
2005	5227	5217	5237
2006	5235	5219	5252
2007	5244	5220	5268
2008	5252	5219	5283
2009	5259	5218	5301
2010	5266	5216	5318
2011	5274	5211	5337
2012	5282	5209	5355
2013	5289	5203	5375
2014	5296	5196	5395
2015	5303	5189	5414
2016	5310	5182	5433
2017	5319	5176	5454
2018	5324	5168	5477
2019	5331	5158	5499
2020	5338	5149	5522
2021	5343	5142	5545
2022	5350	5130	5566
2023	5355	5120	5590
2024	5361	5107	5612
2025	5363	5096	5636
2026	5365	5082	5653
2027	5368	5066	5675
2028	5369	5047	5699
2029	5367	5032	5722
2030	5367	5006	5745
2031	5367	4982	5763
2032	5366	4959	5784
2033	5364	4936	5803
2034	5361	4910	5821
2035	5356	4888	5840
2036	5348	4857	5856
2037	5342	4824	5874
2038	5336	4799	5897
2039	5330	4771	5917
2040	5325	4741	5941
2041	5316	4707	5957
2042	5309	4677	5978
2043	5298	4649	6006
2044	5290	4621	6039
2045	5283	4588	6072
2046	5274	4555	6108
2047	5272	4526	6149
2048	5270	4493	6182
2049	5268	4462	6203
2050	5266	4435	6239

**Table 2.** Predictive Distribution of the Population in FINLAND, in Ages 0-19 (in 1.000's), in 2004-2050, Median with Lower and Upper Limits of 80% Prediction Intervals.

Year	Median	Lower	Upper
2004	1239	1237	1240
2005	1228	1224	1232

2006	1219	1212	1226
2007	1212	1202	1223
2008	1206	1192	1220
2009	1197	1178	1215
2010	1188	1164	1211
2011	1177	1148	1206
2012	1167	1132	1202
2013	1155	1114	1198
2014	1145	1098	1196
2015	1136	1081	1195
2016	1128	1066	1197
2017	1123	1053	1201
2018	1119	1042	1209
2019	1119	1032	1219
2020	1118	1020	1229
2021	1118	1010	1242
2022	1117	999	1255
2023	1117	988	1269
2024	1119	978	1284
2025	1120	967	1297
2026	1120	958	1309
2027	1120	948	1325
2028	1120	936	1338
2029	1120	925	1351
2030	1119	912	1367
2031	1117	900	1381
2032	1116	888	1393
2033	1111	875	1404
2034	1110	862	1418
2035	1105	851	1429
2036	1101	836	1439
2037	1098	823	1455
2038	1094	812	1472
2039	1091	799	1486
2040	1085	786	1502
2041	1081	771	1520
2042	1075	759	1534
2043	1072	748	1556
2044	1069	737	1572
2045	1067	726	1595
2046	1066	717	1611
2047	1064	704	1633
2048	1064	693	1652
2049	1063	683	1676
2050	1061	675	1705

**Table 3.** Predictive Distribution of the Population in FINLAND, in Ages 20-64 (in 1,000's), in 2004-2050, Median with Lower and Upper Limits of 80% Prediction Intervals.

Year	Median	Lower	Upper
2004	3167	3166	3167
2005	3171	3165	3177
2006	3181	3170	3191
2007	3170	3156	3185
2008	3179	3160	3199
2009	3181	3157	3206
2010	3181	3150	3210

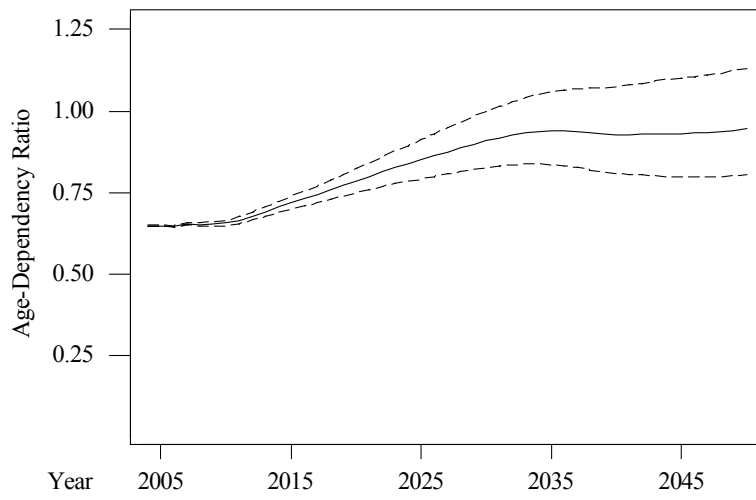
2011	3168	3133	3205
2012	3148	3107	3190
2013	3127	3081	3175
2014	3105	3052	3159
2015	3086	3026	3147
2016	3067	3001	3133
2017	3050	2978	3124
2018	3028	2949	3108
2019	3008	2922	3095
2020	2990	2895	3083
2021	2970	2869	3070
2022	2949	2843	3055
2023	2931	2818	3045
2024	2915	2795	3035
2025	2897	2771	3025
2026	2879	2746	3014
2027	2864	2721	3005
2028	2846	2696	2996
2029	2829	2672	2988
2030	2812	2649	2979
2031	2798	2627	2973
2032	2785	2604	2966
2033	2773	2585	2961
2034	2762	2564	2960
2035	2758	2551	2964
2036	2754	2536	2973
2037	2753	2526	2982
2038	2757	2517	2998
2039	2760	2512	3014
2040	2760	2495	3022
2041	2757	2480	3030
2042	2753	2466	3034
2043	2748	2452	3038
2044	2744	2439	3046
2045	2741	2423	3054
2046	2738	2407	3063
2047	2732	2389	3073
2048	2724	2369	3083
2049	2717	2347	3095
2050	2710	2331	3105

**Table 4.** Predictive Distribution of the Population in FINLAND in Ages 65+ (in 1,000's), in 2004-2050, Median with Lower and Upper Limits of 80% Prediction Intervals.

Year	Median	Lower	Upper
2004	813	811	815
2005	829	825	832
2006	836	830	842
2007	861	853	869
2008	866	855	877
2009	881	868	894
2010	898	882	915
2011	929	910	948
2012	967	944	989
2013	1006	980	1032
2014	1045	1014	1074
2015	1081	1047	1114
2016	1113	1075	1150

2017	1142	1099	1183
2018	1174	1125	1219
2019	1201	1148	1250
2020	1229	1169	1283
2021	1254	1189	1314
2022	1280	1208	1346
2023	1304	1225	1374
2024	1323	1239	1399
2025	1343	1252	1427
2026	1363	1265	1452
2027	1381	1277	1478
2028	1400	1288	1503
2029	1417	1299	1528
2030	1433	1309	1551
2031	1447	1316	1571
2032	1459	1322	1591
2033	1470	1325	1611
2034	1477	1326	1628
2035	1481	1320	1637
2036	1481	1312	1643
2037	1479	1304	1649
2038	1473	1291	1651
2039	1466	1276	1651
2040	1463	1265	1655
2041	1463	1260	1661
2042	1463	1254	1668
2043	1463	1249	1674
2044	1461	1241	1680
2045	1460	1234	1685
2046	1459	1230	1692
2047	1459	1224	1696
2048	1462	1222	1706
2049	1464	1223	1713
2050	1466	1223	1719

### Age-Dependency Ratio, 2004-2050



**Figure.** Age-Dependency Ratio in FINLAND and 80 % Prediction Intervals, in 2004-2050.

**Table 1.** Predictive Distribution of the Total Population in FRANCE (in 1,000's), in 2004-2050, Median with Lower and Upper Limits of 80% Prediction Intervals.

Year	Median	Lower	Upper
2004	59899	59825	59972
2005	60155	60009	60291
2006	60404	60175	60626
2007	60642	60316	60959
2008	60875	60449	61317
2009	61103	60564	61663
2010	61335	60648	62040
2011	61552	60736	62399
2012	61765	60784	62781
2013	61959	60813	63160
2014	62178	60826	63565
2015	62382	60837	63954
2016	62585	60835	64356
2017	62763	60811	64771
2018	62958	60810	65215
2019	63173	60845	65628
2020	63329	60866	66070
2021	63526	60832	66482
2022	63715	60812	66929
2023	63882	60735	67360
2024	64034	60661	67834
2025	64205	60661	68250
2026	64426	60566	68704
2027	64559	60514	69207
2028	64716	60474	69716
2029	64939	60339	70227
2030	65123	60248	70719
2031	65274	60221	71185
2032	65465	60132	71590
2033	65651	59994	72181
2034	65823	59887	72734
2035	65995	59741	73276
2036	66099	59601	73850
2037	66259	59467	74346
2038	66413	59324	74818
2039	66605	59162	75468
2040	66769	58895	75971
2041	66866	58705	76682
2042	66929	58547	77254
2043	67034	58329	77844
2044	67074	58132	78320
2045	67162	57836	78892
2046	67322	57582	79516
2047	67386	57310	80220
2048	67442	57066	80832
2049	67488	56778	81476
2050	67572	56458	82209

**Table 2.** Predictive Distribution of the Population in FRANCE, in Ages 0-19 (in 1.000's), in 2004-2050, Median with Lower and Upper Limits of 80% Prediction Intervals.

Year	Median	Lower	Upper
2004	15006	14976	15037
2005	15014	14950	15079

2006	15008	14904	15118
2007	14985	14830	15147
2008	14967	14754	15185
2009	14944	14659	15227
2010	14919	14563	15265
2011	14889	14465	15338
2012	14869	14356	15399
2013	14862	14260	15515
2014	14883	14184	15650
2015	14902	14078	15796
2016	14892	13976	15916
2017	14871	13848	16049
2018	14873	13727	16208
2019	14851	13580	16356
2020	14798	13448	16510
2021	14749	13235	16616
2022	14679	13035	16730
2023	14628	12836	16896
2024	14596	12664	17070
2025	14556	12473	17219
2026	14523	12303	17438
2027	14487	12135	17597
2028	14473	11996	17796
2029	14492	11844	18039
2030	14497	11686	18248
2031	14503	11527	18485
2032	14466	11375	18740
2033	14453	11249	19001
2034	14472	11115	19236
2035	14478	11004	19486
2036	14466	10847	19813
2037	14481	10723	20082
2038	14490	10601	20431
2039	14485	10431	20699
2040	14499	10281	20986
2041	14477	10172	21223
2042	14501	10053	21556
2043	14517	9920	21844
2044	14491	9828	22058
2045	14516	9696	22388
2046	14537	9536	22571
2047	14505	9413	22820
2048	14535	9294	23200
2049	14541	9164	23519
2050	14516	9045	23825

**Table 3.** Predictive Distribution of the Population in FRANCE, in Ages 20-64 (in 1,000's), in 2004-2050, Median with Lower and Upper Limits of 80% Prediction Intervals.

Year	Median	Lower	Upper
2004	35081	35034	35129
2005	35238	35151	35323
2006	35437	35301	35576
2007	35675	35478	35870
2008	35857	35604	36120
2009	36007	35691	36341
2010	36147	35746	36566
2011	36287	35803	36788

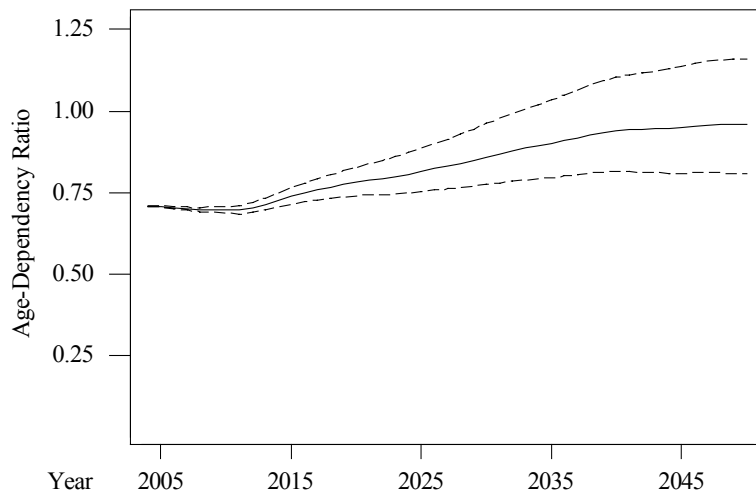
2012	36243	35649	36840
2013	36157	35440	36859
2014	36027	35216	36824
2015	35894	34987	36812
2016	35781	34770	36805
2017	35696	34608	36828
2018	35627	34432	36848
2019	35585	34284	36899
2020	35520	34162	36941
2021	35518	34072	37041
2022	35507	33966	37140
2023	35469	33824	37248
2024	35453	33690	37271
2025	35393	33549	37306
2026	35330	33379	37392
2027	35264	33165	37425
2028	35182	32991	37460
2029	35098	32805	37479
2030	35022	32602	37480
2031	34954	32433	37509
2032	34861	32264	37518
2033	34818	32043	37637
2034	34776	31833	37706
2035	34716	31639	37751
2036	34669	31455	37866
2037	34576	31262	37940
2038	34492	30984	37984
2039	34419	30795	38118
2040	34410	30643	38223
2041	34434	30530	38411
2042	34459	30412	38633
2043	34467	30282	38832
2044	34461	30147	39040
2045	34458	30042	39263
2046	34427	29842	39488
2047	34411	29590	39715
2048	34463	29394	39900
2049	34511	29333	40148
2050	34548	29180	40383

**Table 4.** Predictive Distribution of the Population in FRANCE in Ages 65+ (in 1,000's), in 2004-2050, Median with Lower and Upper Limits of 80% Prediction Intervals.

Year	Median	Lower	Upper
2004	9812	9791	9831
2005	9901	9857	9943
2006	9954	9886	10019
2007	9981	9887	10073
2008	10050	9931	10168
2009	10152	10000	10299
2010	10262	10080	10443
2011	10369	10150	10584
2012	10650	10390	10904
2013	10956	10656	11251
2014	11272	10919	11605
2015	11578	11180	11951
2016	11885	11433	12301
2017	12156	11651	12624

2018	12435	11875	12940
2019	12693	12076	13252
2020	12960	12291	13567
2021	13219	12487	13867
2022	13477	12689	14176
2023	13730	12882	14483
2024	13982	13070	14790
2025	14250	13266	15118
2026	14503	13453	15440
2027	14765	13642	15755
2028	15009	13806	16057
2029	15278	13999	16388
2030	15548	14210	16726
2031	15793	14383	17031
2032	16027	14543	17350
2033	16239	14667	17641
2034	16445	14780	17940
2035	16652	14888	18234
2036	16842	14977	18498
2037	17056	15099	18805
2038	17274	15202	19096
2039	17443	15285	19360
2040	17560	15312	19579
2041	17640	15312	19741
2042	17693	15273	19866
2043	17745	15267	20021
2044	17782	15222	20188
2045	17861	15221	20351
2046	17970	15229	20554
2047	18063	15218	20728
2048	18153	15222	20905
2049	18173	15160	21015
2050	18201	15125	21128

### Age-Dependency Ratio, 2004-2050



**Figure.** Age-Dependency Ratio in FRANCE and 80 % Prediction Intervals, in 2004-2050.

**Table 1.** Predictive Distribution of the Total Population in GERMANY (in 1,000's), in 2004-2050, Median with Lower and Upper Limits of 80% Prediction Intervals.

Year	Median	Lower	Upper
2004	82514	82314	82696
2005	82595	82260	82929
2006	82677	82193	83168
2007	82749	82088	83384
2008	82822	81967	83634
2009	82878	81850	83885
2010	82934	81661	84143
2011	82984	81514	84434
2012	83015	81313	84723
2013	83036	81103	85003
2014	83062	80858	85324
2015	83104	80627	85606
2016	83122	80330	85923
2017	83130	80100	86221
2018	83164	79876	86580
2019	83189	79572	86898
2020	83212	79309	87186
2021	83169	79000	87455
2022	83211	78751	87877
2023	83161	78462	88119
2024	83177	78095	88465
2025	83165	77703	88742
2026	83190	77395	88999
2027	83064	77056	89358
2028	83061	76673	89571
2029	82918	76285	89798
2030	82900	75910	90150
2031	82864	75585	90420
2032	82809	75129	90634
2033	82747	74659	90935
2034	82602	74307	91189
2035	82516	73790	91627
2036	82374	73428	91909
2037	82249	72937	92266
2038	82173	72435	92529
2039	82049	71981	92958
2040	81981	71416	93341
2041	81871	70912	93624
2042	81627	70496	94000
2043	81441	70050	94410
2044	81245	69583	94822
2045	81054	69077	95223
2046	80894	68504	95649
2047	80684	67939	96074
2048	80520	67430	96441
2049	80347	66672	96688
2050	80271	66293	97189

**Table 2.** Predictive Distribution of the Population in GERMANY, in Ages 0-19 (in 1.000's), in 2004-2050, Median with Lower and Upper Limits of 80% Prediction Intervals.

Year	Median	Lower	Upper
2004	16892	16833	16948
2005	16731	16626	16833
2006	16558	16401	16717
2007	16341	16126	16558
2008	16103	15823	16389
2009	15836	15481	16214
2010	15596	15151	16061
2011	15331	14812	15917
2012	15154	14559	15852
2013	15027	14304	15823
2014	14898	14078	15829
2015	14808	13873	15881
2016	14731	13657	15929
2017	14623	13418	15938
2018	14491	13153	15982
2019	14382	12944	16023
2020	14293	12719	16121
2021	14206	12499	16227
2022	14150	12312	16369
2023	14102	12105	16516
2024	14079	11933	16693
2025	14066	11785	16860
2026	14057	11654	17002
2027	14038	11506	17158
2028	14016	11355	17352
2029	13998	11239	17564
2030	13985	11076	17739
2031	13977	10958	17942
2032	13945	10811	18116
2033	13920	10658	18275
2034	13879	10523	18391
2035	13819	10377	18635
2036	13763	10222	18765
2037	13730	10047	18895
2038	13669	9895	19054
2039	13636	9775	19181
2040	13566	9610	19418
2041	13510	9432	19535
2042	13402	9253	19669
2043	13336	9118	19772
2044	13294	8951	19873
2045	13269	8803	20069
2046	13219	8711	20348
2047	13172	8584	20565
2048	13211	8491	20782
2049	13210	8410	20992
2050	13195	8318	21224

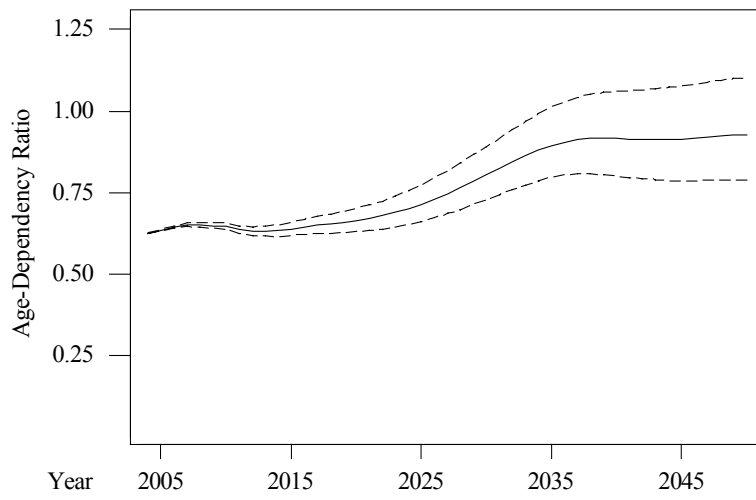
**Table 3.** Predictive Distribution of the Population in GERMANY, in Ages 20-64 (in 1,000's), in 2004-2050, Median with Lower and Upper Limits of 80% Prediction Intervals.

Year	Median	Lower	Upper
2004	50773	50637	50901
2005	50517	50289	50744
2006	50261	49943	50599
2007	50124	49684	50548
2008	50210	49645	50738
2009	50303	49609	50957
2010	50401	49537	51178
2011	50725	49756	51669
2012	50886	49755	52012
2013	50908	49634	52196
2014	50880	49415	52356
2015	50747	49149	52373
2016	50574	48811	52379
2017	50447	48487	52430
2018	50317	48219	52455
2019	50168	47948	52449
2020	49982	47581	52416
2021	49816	47250	52358
2022	49556	46833	52234
2023	49260	46317	52114
2024	48951	45816	51951
2025	48538	45274	51785
2026	48108	44609	51503
2027	47597	43967	51188
2028	47048	43252	50805
2029	46497	42504	50485
2030	45947	41834	50060
2031	45424	41080	49734
2032	44884	40369	49413
2033	44402	39723	49095
2034	43979	39063	48881
2035	43584	38505	48697
2036	43274	38048	48616
2037	43030	37604	48605
2038	42838	37272	48600
2039	42843	37018	48775
2040	42754	36863	48929
2041	42725	36607	49116
2042	42663	36321	49295
2043	42587	36045	49395
2044	42522	35728	49563
2045	42402	35473	49643
2046	42299	35108	49687
2047	42174	34764	49847
2048	41985	34461	49890
2049	41895	34106	49982
2050	41772	33821	50121

**Table 4.** Predictive Distribution of the Population in GERMANY in Ages 65+ (in 1,000's), in 2004-2050, Median with Lower and Upper Limits of 80% Prediction Intervals.

Year	Median	Lower	Upper
2004	14847	14814	14879
2005	15348	15280	15416
2006	15856	15751	15962
2007	16284	16136	16429
2008	16506	16315	16694
2009	16741	16501	16975
2010	16948	16655	17229
2011	16920	16574	17253
2012	16969	16557	17361
2013	17115	16640	17575
2014	17302	16756	17829
2015	17553	16940	18152
2016	17831	17143	18509
2017	18091	17317	18844
2018	18364	17492	19207
2019	18622	17656	19551
2020	18898	17844	19924
2021	19179	18029	20301
2022	19479	18233	20707
2023	19795	18462	21130
2024	20124	18719	21580
2025	20517	18972	22057
2026	20933	19262	22596
2027	21385	19596	23150
2028	21844	19926	23727
2029	22344	20316	24348
2030	22833	20700	24942
2031	23303	21082	25537
2032	23759	21399	26106
2033	24171	21688	26628
2034	24539	21956	27123
2035	24855	22141	27558
2036	25094	22249	27903
2037	25283	22305	28203
2038	25358	22258	28404
2039	25355	22098	28512
2040	25323	21935	28600
2041	25263	21751	28689
2042	25229	21556	28802
2043	25182	21359	28887
2044	25150	21192	28993
2045	25123	21025	29102
2046	25128	20898	29247
2047	25115	20722	29389
2048	25127	20578	29500
2049	25084	20389	29627
2050	25030	20260	29699

### Age-Dependency Ratio, 2004-2050



**Figure.** Age-Dependency Ratio in GERMANY and 80 % Prediction Intervals, in 2004-2050.

**Table 1.** Predictive Distribution of the Total Population in GREECE (in 1,000's), in 2004-2050, Median with Lower and Upper Limits of 80% Prediction Intervals.

Year	Median	Lower	Upper
2004	11041	11002	11079
2005	11086	11025	11150
2006	11129	11043	11220
2007	11171	11054	11288
2008	11213	11065	11356
2009	11249	11066	11432
2010	11283	11072	11496
2011	11317	11075	11578
2012	11349	11061	11649
2013	11377	11044	11722
2014	11404	11029	11793
2015	11426	11005	11867
2016	11454	10979	11936
2017	11476	10970	11999
2018	11499	10937	12055
2019	11515	10896	12131
2020	11532	10880	12175
2021	11542	10845	12234
2022	11564	10801	12294
2023	11581	10760	12364
2024	11595	10716	12426
2025	11607	10692	12478
2026	11614	10654	12553
2027	11638	10612	12622
2028	11654	10573	12690
2029	11674	10544	12766
2030	11684	10493	12833
2031	11699	10471	12917
2032	11724	10411	12992
2033	11737	10375	13053
2034	11743	10320	13122
2035	11754	10294	13183
2036	11771	10263	13273
2037	11789	10213	13335
2038	11810	10178	13411
2039	11824	10151	13488
2040	11837	10101	13589
2041	11853	10059	13671
2042	11876	10004	13736
2043	11878	9934	13835
2044	11888	9892	13915
2045	11898	9850	14010
2046	11904	9801	14092
2047	11923	9738	14187
2048	11931	9684	14274
2049	11937	9619	14394
2050	11948	9578	14489

**Table 2.** Predictive Distribution of the Population in GREECE, in Ages 0-19 (in 1.000's), in 2004-2050, Median with Lower and Upper Limits of 80% Prediction Intervals.

Year	Median	Lower	Upper
2004	2237	2226	2247
2005	2218	2202	2235
2006	2206	2183	2231
2007	2200	2167	2232
2008	2200	2159	2240
2009	2196	2145	2246
2010	2198	2137	2260
2011	2195	2122	2270
2012	2195	2110	2284
2013	2194	2097	2297
2014	2196	2084	2316
2015	2195	2066	2332
2016	2195	2047	2348
2017	2195	2030	2370
2018	2196	2011	2386
2019	2199	1995	2407
2020	2199	1977	2427
2021	2194	1953	2448
2022	2190	1927	2469
2023	2184	1900	2480
2024	2174	1875	2500
2025	2168	1849	2512
2026	2157	1820	2527
2027	2143	1791	2548
2028	2132	1758	2562
2029	2120	1728	2580
2030	2111	1704	2596
2031	2102	1675	2618
2032	2096	1648	2643
2033	2086	1618	2661
2034	2079	1586	2681
2035	2075	1558	2716
2036	2068	1534	2744
2037	2062	1512	2771
2038	2064	1495	2807
2039	2065	1481	2844
2040	2069	1464	2880
2041	2071	1450	2915
2042	2079	1435	2962
2043	2083	1418	3007
2044	2088	1403	3044
2045	2090	1395	3078
2046	2096	1388	3114
2047	2104	1370	3163
2048	2109	1360	3205
2049	2112	1347	3245
2050	2123	1336	3293

**Table 3.** Predictive Distribution of the Population in GREECE, in Ages 20-64 (in 1,000's), in 2004-2050, Median with Lower and Upper Limits of 80% Prediction Intervals.

Year	Median	Lower	Upper
2004	6836	6809	6863
2005	6870	6828	6915
2006	6882	6821	6946
2007	6928	6845	7011
2008	6962	6860	7063
2009	7002	6880	7131
2010	7015	6873	7168
2011	7027	6859	7206
2012	7026	6830	7229
2013	7024	6799	7258
2014	7031	6784	7297
2015	7050	6771	7346
2016	7047	6735	7369
2017	7054	6715	7398
2018	7054	6684	7430
2019	7057	6651	7455
2020	7050	6621	7472
2021	7040	6590	7495
2022	7030	6548	7527
2023	7028	6505	7549
2024	7021	6464	7567
2025	7009	6428	7585
2026	6988	6378	7601
2027	6981	6336	7625
2028	6978	6309	7644
2029	6973	6274	7677
2030	6965	6228	7693
2031	6944	6174	7714
2032	6920	6117	7716
2033	6890	6057	7722
2034	6862	6001	7723
2035	6842	5930	7725
2036	6804	5865	7725
2037	6781	5794	7726
2038	6746	5742	7729
2039	6720	5673	7738
2040	6677	5598	7735
2041	6654	5535	7725
2042	6615	5461	7706
2043	6587	5399	7691
2044	6542	5329	7683
2045	6505	5252	7680
2046	6460	5187	7665
2047	6431	5132	7673
2048	6397	5077	7672
2049	6370	5027	7687

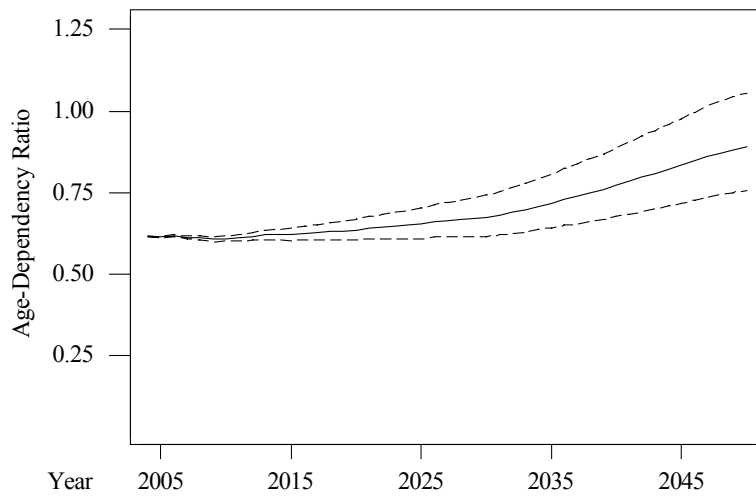
2050      6349      4983      7684

**Table 4.** Predictive Distribution of the Population in GREECE in Ages 65+ (in 1,000's), in 2004-2050, Median with Lower and Upper Limits of 80% Prediction Intervals.

Year	Median	Lower	Upper
2004	1968	1964	1972
2005	1997	1988	2006
2006	2041	2027	2055
2007	2044	2024	2063
2008	2050	2024	2076
2009	2051	2018	2083
2010	2069	2030	2109
2011	2094	2048	2142
2012	2129	2073	2185
2013	2158	2091	2223
2014	2174	2098	2249
2015	2181	2096	2266
2016	2210	2113	2304
2017	2228	2123	2333
2018	2246	2131	2362
2019	2259	2134	2386
2020	2278	2143	2415
2021	2304	2159	2455
2022	2331	2175	2494
2023	2354	2188	2531
2024	2382	2206	2570
2025	2409	2223	2608
2026	2452	2255	2663
2027	2478	2270	2701
2028	2506	2289	2741
2029	2536	2307	2780
2030	2568	2330	2825
2031	2607	2357	2878
2032	2653	2391	2940
2033	2705	2427	3003
2034	2755	2463	3064
2035	2803	2498	3120
2036	2858	2536	3189
2037	2898	2562	3249
2038	2943	2583	3311
2039	2984	2613	3364
2040	3034	2645	3428
2041	3080	2670	3488
2042	3124	2695	3549
2043	3170	2721	3616
2044	3211	2751	3679
2045	3248	2767	3736
2046	3291	2790	3798
2047	3329	2807	3856
2048	3360	2822	3905
2049	3385	2826	3951

2050      3406      2826      3992

### Age-Dependency Ratio, 2004-2050



**Figure.** Age-Dependency Ratio in GREECE and 80 % Prediction Intervals, in 2004-2050.

**Table 1.** Predictive Distribution of the Total Population in ICELAND (in 1,000's), in 2004-2050, Median with Lower and Upper Limits of 80% Prediction Intervals.

Year	Median	Lower	Upper
2004	291	291	291
2005	293	292	295
2006	296	294	298
2007	298	295	301
2008	301	297	304
2009	303	299	308
2010	306	301	311
2011	308	302	314
2012	310	304	317
2013	313	305	321
2014	315	307	324
2015	318	308	327
2016	320	310	331
2017	322	311	334
2018	325	312	338
2019	327	313	341
2020	330	315	344
2021	332	316	348
2022	334	317	351
2023	337	318	355
2024	339	319	359
2025	341	320	363
2026	344	321	367
2027	346	322	371
2028	348	323	375
2029	350	323	379
2030	352	324	382
2031	354	324	386
2032	356	325	390
2033	358	325	393
2034	359	325	397
2035	361	326	400
2036	363	326	404
2037	364	326	408
2038	366	326	412
2039	367	325	416
2040	369	324	419
2041	370	323	424
2042	372	323	428
2043	373	322	432
2044	374	321	436
2045	375	320	440
2046	376	319	444
2047	377	318	449
2048	378	317	453
2049	379	316	458
2050	380	315	462

**Table 2.** Predictive Distribution of the Population in ICELAND, in Ages 0-19 (in 1.000's), in 2004-2050, Median with Lower and Upper Limits of 80% Prediction Intervals.

Year	Median	Lower	Upper
2004	86	86	86
2005	86	86	87
2006	87	86	88
2007	87	86	88
2008	87	85	89
2009	86	85	88
2010	86	84	89
2011	85	83	88
2012	85	82	89
2013	85	81	89
2014	84	80	89
2015	84	79	90
2016	84	78	90
2017	84	77	91
2018	83	76	91
2019	83	76	92
2020	84	75	93
2021	83	74	94
2022	84	73	96
2023	84	73	97
2024	84	72	99
2025	84	71	100
2026	85	71	102
2027	85	70	104
2028	85	70	105
2029	85	69	107
2030	85	68	108
2031	86	68	109
2032	86	67	111
2033	85	66	112
2034	85	65	114
2035	85	65	116
2036	85	64	117
2037	85	63	118
2038	85	62	120
2039	85	61	121
2040	85	60	122
2041	85	60	124
2042	85	59	125
2043	85	58	127
2044	85	57	128
2045	84	56	130
2046	84	55	132
2047	84	55	133
2048	84	54	135
2049	84	53	137
2050	84	52	140

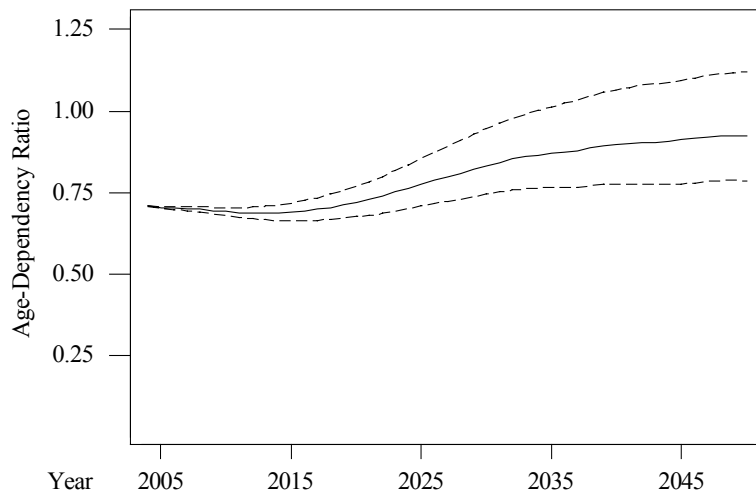
**Table 3.** Predictive Distribution of the Population in ICELAND, in Ages 20-64 (in 1,000's), in 2004-2050, Median with Lower and Upper Limits of 80% Prediction Intervals.

Year	Median	Lower	Upper
2004	170	170	170
2005	172	171	173
2006	174	172	175
2007	176	174	177
2008	177	175	179
2009	179	176	182
2010	181	177	184
2011	182	179	186
2012	184	180	188
2013	185	181	190
2014	187	182	192
2015	188	183	193
2016	189	183	195
2017	190	183	196
2018	190	183	197
2019	191	184	198
2020	191	183	199
2021	192	183	200
2022	192	183	200
2023	192	183	201
2024	192	182	201
2025	192	182	202
2026	192	181	202
2027	192	181	203
2028	192	180	203
2029	192	180	204
2030	192	179	205
2031	192	178	205
2032	191	178	206
2033	192	177	207
2034	192	177	208
2035	193	176	209
2036	193	176	210
2037	193	176	212
2038	194	175	212
2039	194	175	213
2040	194	174	215
2041	195	174	216
2042	195	173	217
2043	196	173	219
2044	196	173	221
2045	196	172	222
2046	196	171	223
2047	197	170	225
2048	197	169	227
2049	197	169	228
2050	198	168	231

**Table 4.** Predictive Distribution of the Population in ICELAND in Ages 65+ (in 1,000's), in 2004-2050, Median with Lower and Upper Limits of 80% Prediction Intervals.

Year	Median	Lower	Upper
2004	34	34	34
2005	35	35	35
2006	35	35	36
2007	36	36	36
2008	37	36	37
2009	38	37	38
2010	39	38	39
2011	40	39	41
2012	41	40	42
2013	43	42	44
2014	44	43	45
2015	46	44	47
2016	47	46	49
2017	49	47	51
2018	51	49	52
2019	52	50	54
2020	54	52	56
2021	56	54	59
2022	58	55	61
2023	60	57	63
2024	62	59	65
2025	64	61	68
2026	66	62	70
2027	68	64	72
2028	70	66	74
2029	72	67	77
2030	74	69	79
2031	76	70	81
2032	78	71	84
2033	79	73	85
2034	81	73	87
2035	82	74	89
2036	83	75	90
2037	84	75	92
2038	86	77	94
2039	87	77	96
2040	88	78	97
2041	89	78	99
2042	90	79	101
2043	91	79	102
2044	92	80	103
2045	93	80	105
2046	94	81	107
2047	95	81	108
2048	96	82	109
2049	96	82	111
2050	97	82	112

### Age-Dependency Ratio, 2004-2050



**Figure.** Age-Dependency Ratio in ICELAND and 80 % Prediction Intervals, in 2004-2050.

**Table 1.** Predictive Distribution of the Total Population in IRELAND (in 1,000's), in 2004-2050, Median with Lower and Upper Limits of 80% Prediction Intervals.

Year	Median	Lower	Upper
2004	4024	4017	4032
2005	4064	4050	4079
2006	4105	4082	4127
2007	4146	4115	4177
2008	4188	4146	4230
2009	4228	4175	4283
2010	4271	4203	4337
2011	4311	4229	4393
2012	4352	4254	4449
2013	4391	4275	4505
2014	4429	4298	4561
2015	4468	4318	4617
2016	4505	4338	4672
2017	4542	4358	4725
2018	4577	4374	4780
2019	4613	4391	4835
2020	4646	4399	4886
2021	4678	4416	4937
2022	4707	4422	4988
2023	4740	4430	5041
2024	4769	4439	5093
2025	4797	4453	5145
2026	4826	4460	5196
2027	4852	4465	5246
2028	4879	4468	5299
2029	4910	4478	5357
2030	4938	4481	5410
2031	4965	4483	5466
2032	4994	4486	5528
2033	5022	4495	5587
2034	5048	4496	5642
2035	5079	4499	5703
2036	5107	4500	5763
2037	5138	4498	5825
2038	5167	4503	5883
2039	5191	4502	5951
2040	5221	4504	6011
2041	5243	4508	6079
2042	5267	4507	6148
2043	5290	4504	6214
2044	5320	4492	6290
2045	5338	4487	6350
2046	5362	4482	6437
2047	5381	4472	6517
2048	5405	4466	6586
2049	5432	4452	6669
2050	5452	4439	6748

**Table 2.** Predictive Distribution of the Population in IRELAND, in Ages 0-19 (in 1.000's), in 2004-2050, Median with Lower and Upper Limits of 80% Prediction Intervals.

Year	Median	Lower	Upper
2004	1139	1136	1142
2005	1142	1137	1148
2006	1148	1139	1158
2007	1152	1138	1165
2008	1157	1138	1176
2009	1166	1141	1191
2010	1173	1142	1205
2011	1180	1142	1219
2012	1187	1142	1235
2013	1195	1143	1253
2014	1205	1144	1273
2015	1214	1145	1291
2016	1222	1144	1309
2017	1227	1140	1326
2018	1230	1133	1341
2019	1231	1121	1352
2020	1231	1110	1364
2021	1231	1098	1375
2022	1230	1087	1389
2023	1225	1072	1400
2024	1218	1055	1410
2025	1211	1035	1419
2026	1203	1014	1426
2027	1194	995	1434
2028	1186	974	1440
2029	1177	953	1449
2030	1170	935	1461
2031	1162	917	1469
2032	1155	899	1482
2033	1149	884	1496
2034	1144	870	1509
2035	1140	856	1524
2036	1139	847	1536
2037	1141	836	1563
2038	1142	826	1586
2039	1142	815	1614
2040	1145	808	1643
2041	1153	800	1676
2042	1159	792	1711
2043	1163	787	1743
2044	1166	782	1781
2045	1177	779	1811
2046	1183	774	1844
2047	1187	769	1880
2048	1193	763	1904
2049	1199	756	1933
2050	1204	748	1961

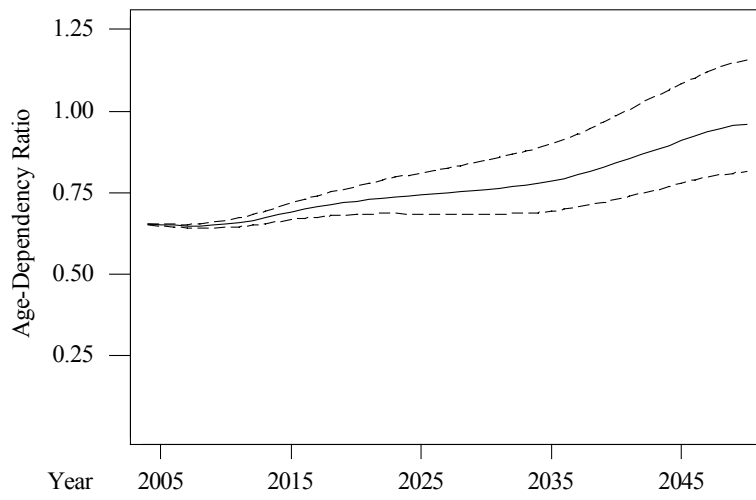
**Table 3.** Predictive Distribution of the Population in IRELAND, in Ages 20-64 (in 1,000's), in 2004-2050, Median with Lower and Upper Limits of 80% Prediction Intervals.

Year	Median	Lower	Upper
2004	2435	2430	2440
2005	2463	2454	2473
2006	2490	2475	2504
2007	2518	2499	2539
2008	2543	2517	2571
2009	2563	2529	2597
2010	2583	2541	2623
2011	2600	2549	2650
2012	2613	2554	2672
2013	2625	2554	2692
2014	2634	2554	2712
2015	2642	2553	2729
2016	2650	2553	2746
2017	2661	2552	2768
2018	2671	2551	2788
2019	2684	2554	2812
2020	2695	2554	2834
2021	2707	2557	2855
2022	2713	2556	2874
2023	2726	2555	2895
2024	2739	2560	2921
2025	2752	2562	2943
2026	2763	2563	2960
2027	2776	2566	2985
2028	2787	2564	3009
2029	2796	2560	3030
2030	2806	2557	3051
2031	2815	2555	3073
2032	2823	2551	3094
2033	2835	2547	3117
2034	2843	2542	3134
2035	2848	2530	3156
2036	2851	2519	3172
2037	2848	2502	3183
2038	2845	2482	3196
2039	2840	2466	3207
2040	2837	2443	3215
2041	2831	2427	3227
2042	2826	2408	3235
2043	2822	2387	3251
2044	2812	2363	3259
2045	2804	2341	3270
2046	2795	2319	3278
2047	2793	2295	3293
2048	2790	2277	3304
2049	2791	2264	3325
2050	2799	2254	3347

**Table 4.** Predictive Distribution of the Population in IRELAND in Ages 65+ (in 1,000's), in 2004-2050, Median with Lower and Upper Limits of 80% Prediction Intervals.

Year	Median	Lower	Upper
2004	450	449	451
2005	459	456	461
2006	467	463	470
2007	476	470	481
2008	487	481	494
2009	501	492	508
2010	515	505	524
2011	532	520	543
2012	551	536	564
2013	571	554	586
2014	591	572	608
2015	611	590	631
2016	631	607	653
2017	651	625	676
2018	673	644	700
2019	695	663	724
2020	717	682	749
2021	738	699	774
2022	761	717	800
2023	784	736	827
2024	806	755	853
2025	829	774	881
2026	854	795	910
2027	879	814	939
2028	904	834	968
2029	930	854	999
2030	955	875	1030
2031	980	893	1060
2032	1005	913	1090
2033	1028	930	1120
2034	1052	949	1149
2035	1077	968	1180
2036	1103	988	1213
2037	1131	1010	1247
2038	1161	1033	1283
2039	1188	1052	1317
2040	1215	1072	1352
2041	1242	1092	1387
2042	1269	1111	1420
2043	1293	1128	1451
2044	1318	1145	1484
2045	1343	1162	1517
2046	1367	1177	1550
2047	1388	1191	1580
2048	1409	1203	1609
2049	1425	1211	1634
2050	1437	1216	1655

### Age-Dependency Ratio, 2004-2050



**Figure.** Age-Dependency Ratio in IRELAND and 80 % Prediction Intervals, in 2004-2050.

**Table 1.** Predictive Distribution of the Total Population in ITALY (in 1,000's), in 2004-2050, Median with Lower and Upper Limits of 80% Prediction Intervals.

Year	Median	Lower	Upper
2004	57787	57641	57939
2005	57919	57650	58175
2006	58044	57633	58414
2007	58134	57596	58672
2008	58231	57556	58932
2009	58312	57461	59196
2010	58384	57350	59427
2011	58438	57182	59683
2012	58495	57037	59927
2013	58513	56812	60180
2014	58518	56567	60441
2015	58490	56311	60641
2016	58472	56056	60891
2017	58458	55817	61156
2018	58416	55576	61379
2019	58395	55271	61609
2020	58382	54989	61871
2021	58356	54689	62071
2022	58311	54402	62335
2023	58273	54080	62578
2024	58264	53775	62810
2025	58198	53461	63057
2026	58195	53126	63343
2027	58130	52823	63573
2028	58071	52419	63868
2029	58014	52144	64129
2030	57997	51790	64367
2031	57913	51572	64621
2032	57938	51240	64849
2033	57903	50941	65119
2034	57910	50632	65421
2035	57848	50304	65742
2036	57794	49957	66002
2037	57713	49583	66219
2038	57704	49198	66544
2039	57675	48853	66931
2040	57658	48538	67261
2041	57622	48214	67598
2042	57563	47926	67904
2043	57466	47503	68282
2044	57395	47185	68663
2045	57325	46823	68952
2046	57315	46442	69362
2047	57273	46034	69630
2048	57154	45646	69965
2049	57067	45279	70320
2050	56998	44869	70595

**Table 2.** Predictive Distribution of the Population in ITALY, in Ages 0-19 (in 1.000's), in 2004-2050, Median with Lower and Upper Limits of 80% Prediction Intervals.

Year	Median	Lower	Upper
2004	11077	11034	11122
2005	11049	10971	11128
2006	11025	10904	11141
2007	11007	10838	11180
2008	10985	10771	11217
2009	10933	10669	11226
2010	10879	10546	11227
2011	10802	10395	11225
2012	10727	10238	11224
2013	10634	10065	11234
2014	10542	9898	11244
2015	10457	9732	11252
2016	10382	9572	11269
2017	10293	9392	11273
2018	10208	9205	11298
2019	10100	9013	11310
2020	9996	8815	11316
2021	9894	8611	11317
2022	9777	8386	11350
2023	9677	8192	11364
2024	9558	7964	11346
2025	9448	7763	11334
2026	9325	7560	11348
2027	9231	7374	11371
2028	9149	7208	11442
2029	9079	7060	11503
2030	9012	6913	11591
2031	8970	6774	11651
2032	8935	6656	11765
2033	8926	6553	11888
2034	8911	6464	12041
2035	8915	6405	12179
2036	8923	6361	12341
2037	8930	6271	12471
2038	8960	6189	12614
2039	8981	6103	12812
2040	8985	6054	13006
2041	8984	5979	13229
2042	9016	5941	13403
2043	9076	5891	13603
2044	9103	5853	13817
2045	9156	5814	13990
2046	9164	5783	14173
2047	9184	5743	14364
2048	9222	5680	14543
2049	9246	5628	14711
2050	9265	5585	14966

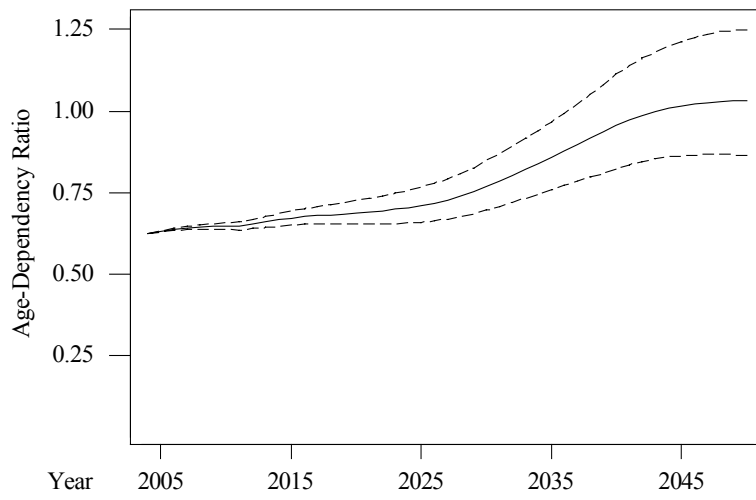
**Table 3.** Predictive Distribution of the Population in ITALY, in Ages 20-64 (in 1,000's), in 2004-2050, Median with Lower and Upper Limits of 80% Prediction Intervals.

Year	Median	Lower	Upper
2004	35583	35480	35688
2005	35522	35337	35697
2006	35453	35175	35702
2007	35429	35065	35789
2008	35413	34962	35873
2009	35418	34853	36000
2010	35449	34750	36147
2011	35493	34662	36324
2012	35386	34404	36348
2013	35267	34160	36385
2014	35127	33850	36414
2015	35004	33571	36445
2016	34896	33307	36506
2017	34823	33054	36577
2018	34740	32859	36692
2019	34675	32635	36778
2020	34587	32386	36823
2021	34510	32130	36904
2022	34419	31860	37015
2023	34297	31581	37062
2024	34193	31316	37115
2025	34048	31002	37064
2026	33862	30673	37110
2027	33654	30282	37044
2028	33427	29892	37042
2029	33165	29460	36899
2030	32825	28934	36765
2031	32513	28452	36613
2032	32174	27940	36450
2033	31852	27493	36312
2034	31538	26987	36241
2035	31204	26429	36086
2036	30887	25971	35977
2037	30528	25377	35857
2038	30205	24865	35683
2039	29849	24400	35521
2040	29542	23925	35460
2041	29267	23486	35345
2042	29032	23115	35298
2043	28894	22779	35275
2044	28726	22469	35192
2045	28570	22128	35246
2046	28475	21827	35385
2047	28401	21645	35420
2048	28321	21397	35571
2049	28285	21195	35646
2050	28274	20994	35736

**Table 4.** Predictive Distribution of the Population in ITALY in Ages 65+ (in 1,000's), in 2004-2050, Median with Lower and Upper Limits of 80% Prediction Intervals.

Year	Median	Lower	Upper
2004	11128	11105	11152
2005	11346	11295	11398
2006	11564	11483	11644
2007	11707	11595	11815
2008	11835	11690	11975
2009	11956	11773	12132
2010	12062	11841	12272
2011	12144	11879	12392
2012	12376	12072	12668
2013	12597	12249	12933
2014	12830	12434	13208
2015	13013	12566	13445
2016	13191	12697	13670
2017	13330	12777	13865
2018	13469	12854	14057
2019	13604	12930	14256
2020	13763	13024	14474
2021	13924	13129	14699
2022	14101	13234	14943
2023	14278	13335	15188
2024	14456	13454	15436
2025	14665	13606	15722
2026	14898	13766	16010
2027	15152	13948	16316
2028	15425	14141	16643
2029	15715	14364	17003
2030	16051	14633	17429
2031	16383	14896	17828
2032	16707	15145	18222
2033	17012	15360	18598
2034	17301	15564	18957
2035	17593	15776	19341
2036	17856	15974	19706
2037	18123	16155	20068
2038	18379	16349	20430
2039	18630	16498	20755
2040	18875	16640	21086
2041	19074	16757	21396
2042	19239	16792	21660
2043	19355	16797	21879
2044	19430	16765	22068
2045	19465	16666	22215
2046	19471	16541	22359
2047	19456	16407	22470
2048	19432	16267	22553
2049	19377	16055	22628
2050	19291	15844	22673

### Age-Dependency Ratio, 2004-2050



**Figure.** Age-Dependency Ratio in ITALY and 80 % Prediction Intervals, in 2004-2050.

**Table 1.** Predictive Distribution of the Total Population in LUXEMBOURG (in 1,000's), in 2004-2050, Median with Lower and Upper Limits of 80% Prediction Intervals.

Year	Median	Lower	Upper
2004	452	450	454
2005	457	453	460
2006	461	456	465
2007	465	459	471
2008	469	462	477
2009	473	464	483
2010	477	467	489
2011	481	469	494
2012	485	471	500
2013	489	473	506
2014	493	475	513
2015	497	477	519
2016	501	479	525
2017	505	481	532
2018	510	482	538
2019	514	485	545
2020	518	486	551
2021	523	488	558
2022	527	490	565
2023	532	492	573
2024	536	495	580
2025	541	496	587
2026	546	498	594
2027	551	500	603
2028	556	502	610
2029	561	504	619
2030	565	505	627
2031	570	507	635
2032	574	509	644
2033	580	510	652
2034	584	511	660
2035	588	513	668
2036	593	514	676
2037	597	515	684
2038	601	517	691
2039	605	518	701
2040	609	518	708
2041	615	520	717
2042	619	520	726
2043	622	520	735
2044	626	521	745
2045	630	521	755
2046	634	523	764
2047	638	522	773
2048	642	523	784
2049	647	523	794
2050	651	524	805

**Table 2.** Predictive Distribution of the Population in LUXEMBOURG, in Ages 0-19 (in 1.000's), in 2004-2050, Median with Lower and Upper Limits of 80% Prediction Intervals.

Year	Median	Lower	Upper
2004	111	110	111
2005	112	111	113
2006	113	112	114
2007	114	112	116
2008	115	112	117
2009	115	112	118
2010	115	112	119
2011	115	111	120
2012	116	111	121
2013	116	110	122
2014	116	109	123
2015	116	108	124
2016	116	107	125
2017	115	106	126
2018	115	105	127
2019	116	104	129
2020	116	103	131
2021	116	102	132
2022	117	101	135
2023	117	100	137
2024	118	100	140
2025	119	99	143
2026	120	99	145
2027	122	99	148
2028	123	99	152
2029	125	99	155
2030	126	99	159
2031	127	99	162
2032	129	98	166
2033	130	98	170
2034	132	98	174
2035	133	98	178
2036	134	98	181
2037	136	97	185
2038	137	97	188
2039	138	97	192
2040	139	96	195
2041	140	96	199
2042	141	95	203
2043	142	95	207
2044	143	94	210
2045	143	93	214
2046	144	92	218
2047	144	91	221
2048	145	90	225
2049	146	90	230
2050	147	89	233

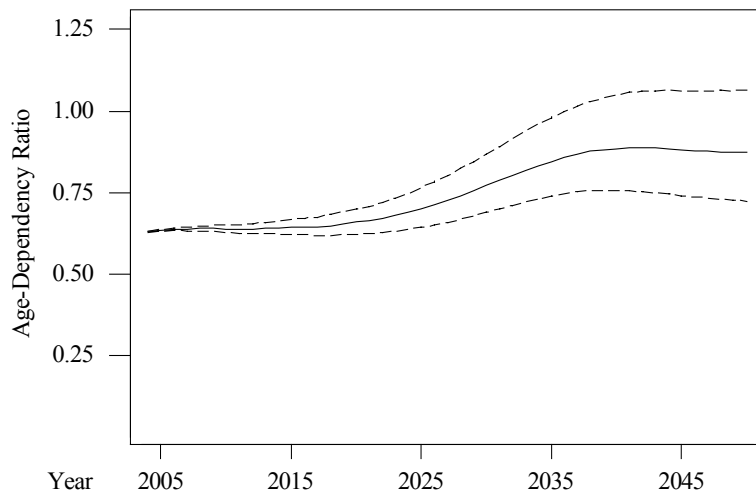
**Table 3.** Predictive Distribution of the Population in LUXEMBOURG, in Ages 20-64 (in 1,000's), in 2004-2050, Median with Lower and Upper Limits of 80% Prediction Intervals.

Year	Median	Lower	Upper
2004	277	276	279
2005	279	277	282
2006	282	278	285
2007	284	280	288
2008	286	281	292
2009	289	283	295
2010	291	284	299
2011	294	286	303
2012	296	287	306
2013	298	287	310
2014	300	288	313
2015	303	289	317
2016	305	290	320
2017	307	291	324
2018	309	292	327
2019	311	292	330
2020	312	293	333
2021	314	293	336
2022	316	293	338
2023	317	292	341
2024	317	292	343
2025	318	291	345
2026	319	290	347
2027	319	289	349
2028	319	288	351
2029	319	286	352
2030	318	285	353
2031	318	283	354
2032	318	281	356
2033	318	280	357
2034	318	278	359
2035	318	277	362
2036	319	275	364
2037	319	275	367
2038	320	274	370
2039	322	274	373
2040	323	273	376
2041	326	274	380
2042	328	274	384
2043	330	275	389
2044	333	276	393
2045	336	277	397
2046	339	278	401
2047	341	279	406
2048	343	279	410
2049	346	280	415
2050	349	281	420

**Table 4.** Predictive Distribution of the Population in LUXEMBOURG in Ages 65+ (in 1,000's), in 2004-2050, Median with Lower and Upper Limits of 80% Prediction Intervals.

Year	Median	Lower	Upper
2004	64	64	64
2005	65	65	66
2006	66	66	67
2007	67	67	68
2008	69	68	69
2009	70	69	71
2010	71	69	72
2011	72	70	73
2012	73	72	75
2013	75	73	77
2014	77	75	80
2015	79	76	82
2016	81	78	84
2017	83	79	86
2018	85	81	89
2019	87	83	91
2020	90	85	94
2021	92	87	97
2022	95	89	100
2023	97	91	103
2024	100	94	107
2025	103	96	110
2026	106	98	114
2027	109	101	117
2028	112	103	121
2029	116	106	125
2030	119	109	129
2031	123	112	134
2032	126	114	138
2033	129	117	142
2034	132	119	145
2035	135	121	149
2036	138	123	152
2037	140	125	156
2038	142	126	159
2039	144	127	162
2040	145	127	164
2041	147	127	166
2042	148	128	169
2043	149	128	171
2044	149	127	173
2045	150	127	174
2046	150	126	176
2047	151	126	178
2048	152	126	179
2049	152	125	181
2050	153	125	183

### Age-Dependency Ratio, 2004-2050



**Figure.** Age-Dependency Ratio in LUXEMBOURG and 80 % Prediction Intervals, in 2004-2050.

**Table 1.** Predictive Distribution of the Total Population in the NETHERLANDS (in 1,000's), in 2004-2050, Median with Lower and Upper Limits of 80% Prediction Intervals.

Year	Median	Lower	Upper
2004	16250	16242	16258
2005	16345	16315	16375
2006	16435	16384	16484
2007	16523	16450	16592
2008	16606	16509	16702
2009	16685	16564	16807
2010	16761	16612	16912
2011	16837	16655	17019
2012	16908	16693	17123
2013	16976	16728	17230
2014	17047	16762	17335
2015	17122	16790	17449
2016	17195	16817	17567
2017	17262	16844	17681
2018	17330	16871	17793
2019	17405	16899	17907
2020	17476	16918	18038
2021	17550	16939	18164
2022	17616	16974	18299
2023	17685	16996	18430
2024	17759	17008	18563
2025	17829	17016	18707
2026	17901	17040	18851
2027	17970	17048	18983
2028	18038	17056	19124
2029	18103	17079	19266
2030	18169	17066	19405
2031	18236	17069	19556
2032	18300	17064	19709
2033	18362	17060	19873
2034	18419	17052	20012
2035	18478	17041	20160
2036	18536	17031	20320
2037	18584	17014	20491
2038	18630	16997	20656
2039	18685	16957	20819
2040	18726	16922	20977
2041	18773	16882	21133
2042	18807	16834	21291
2043	18847	16775	21470
2044	18889	16724	21645
2045	18932	16686	21814
2046	18989	16653	21981
2047	19038	16598	22157
2048	19085	16540	22339
2049	19124	16482	22555
2050	19171	16451	22743

**Table 2.** Predictive Distribution of the Population in the NETHERLANDS, in Ages 0-19 (in 1.000's), in 2004-2050, Median with Lower and Upper Limits of 80% Prediction Intervals.

Year	Median	Lower	Upper
2004	3980	3975	3986
2005	4004	3990	4018
2006	4020	3997	4044
2007	4029	3994	4064
2008	4031	3986	4081
2009	4032	3975	4098
2010	4030	3956	4110
2011	4017	3925	4115
2012	4004	3893	4120
2013	3992	3861	4131
2014	3982	3827	4144
2015	3970	3794	4160
2016	3964	3766	4185
2017	3959	3736	4215
2018	3955	3704	4248
2019	3945	3665	4278
2020	3936	3624	4314
2021	3926	3578	4351
2022	3917	3535	4389
2023	3911	3495	4444
2024	3916	3456	4496
2025	3922	3431	4559
2026	3936	3400	4627
2027	3955	3373	4697
2028	3965	3352	4777
2029	3985	3327	4855
2030	4012	3303	4942
2031	4035	3278	5031
2032	4061	3266	5136
2033	4092	3241	5221
2034	4125	3237	5323
2035	4164	3220	5421
2036	4182	3200	5517
2037	4201	3172	5613
2038	4227	3145	5688
2039	4234	3136	5788
2040	4252	3113	5893
2041	4266	3080	5975
2042	4272	3053	6066
2043	4269	3015	6143
2044	4277	2991	6216
2045	4278	2954	6295
2046	4283	2916	6374
2047	4288	2877	6428
2048	4293	2847	6523
2049	4299	2825	6582
2050	4309	2784	6653

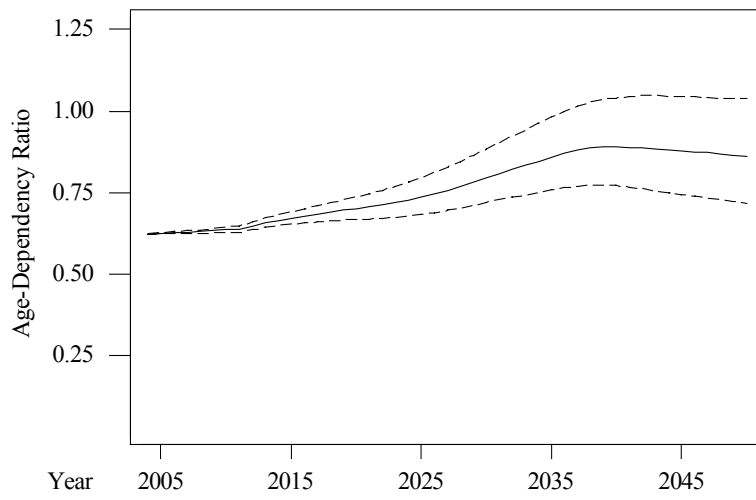
**Table 3.** Predictive Distribution of the Population in the NETHERLANDS, in Ages 20-64 (in 1,000's), in 2004-2050, Median with Lower and Upper Limits of 80% Prediction Intervals.

Year	Median	Lower	Upper
2004	10019	10018	10020
2005	10059	10042	10076
2006	10096	10067	10126
2007	10145	10102	10186
2008	10188	10133	10242
2009	10219	10149	10286
2010	10243	10155	10327
2011	10286	10181	10384
2012	10265	10142	10377
2013	10247	10105	10378
2014	10242	10082	10391
2015	10247	10064	10414
2016	10250	10052	10436
2017	10258	10037	10458
2018	10256	10022	10476
2019	10269	10012	10502
2020	10277	10004	10533
2021	10293	9996	10568
2022	10298	9985	10595
2023	10298	9967	10615
2024	10293	9943	10627
2025	10279	9912	10634
2026	10257	9874	10634
2027	10234	9823	10631
2028	10202	9776	10621
2029	10171	9715	10610
2030	10131	9656	10591
2031	10091	9594	10571
2032	10060	9542	10562
2033	10026	9490	10558
2034	9994	9426	10545
2035	9953	9361	10532
2036	9918	9297	10519
2037	9899	9247	10529
2038	9895	9207	10552
2039	9910	9187	10604
2040	9934	9174	10664
2041	9961	9170	10740
2042	9996	9164	10821
2043	10041	9174	10908
2044	10080	9170	10999
2045	10118	9172	11088
2046	10155	9180	11179
2047	10193	9176	11278
2048	10240	9195	11369
2049	10291	9193	11470
2050	10337	9190	11574

**Table 4.** Predictive Distribution of the Population in the NETHERLANDS in Ages 65+ (in 1,000's), in 2004-2050, Median with Lower and Upper Limits of 80% Prediction Intervals.

Year	Median	Lower	Upper
2004	2251	2245	2256
2005	2282	2271	2294
2006	2318	2301	2336
2007	2348	2324	2373
2008	2385	2353	2417
2009	2432	2392	2472
2010	2487	2438	2536
2011	2532	2475	2589
2012	2641	2574	2707
2013	2740	2663	2815
2014	2825	2736	2912
2015	2902	2801	3000
2016	2975	2860	3082
2017	3042	2914	3163
2018	3114	2972	3248
2019	3185	3025	3330
2020	3254	3076	3417
2021	3325	3131	3502
2022	3398	3186	3594
2023	3470	3238	3686
2024	3544	3296	3777
2025	3622	3349	3878
2026	3701	3404	3972
2027	3783	3464	4077
2028	3864	3520	4180
2029	3949	3574	4282
2030	4031	3633	4389
2031	4106	3683	4483
2032	4173	3729	4572
2033	4238	3771	4656
2034	4302	3806	4746
2035	4372	3853	4839
2036	4433	3888	4929
2037	4484	3909	5004
2038	4515	3919	5068
2039	4534	3913	5107
2040	4539	3899	5136
2041	4533	3872	5163
2042	4527	3843	5186
2043	4522	3808	5201
2044	4515	3785	5221
2045	4507	3755	5233
2046	4506	3727	5254
2047	4500	3701	5270
2048	4494	3681	5286
2049	4480	3656	5297
2050	4475	3631	5310

### Age-Dependency Ratio, 2004-2050



**Figure.** Age-Dependency Ratio in the NETHERLANDS and 80 % Prediction Intervals, in 2004-2050.

**Table 1.** Predictive Distribution of the Total Population in NORWAY (in 1,000's), in 2004-2050, Median with Lower and Upper Limits of 80% Prediction Intervals.

Year	Median	Lower	Upper
2004	4575	4572	4578
2005	4599	4590	4608
2006	4623	4607	4640
2007	4647	4623	4672
2008	4671	4638	4704
2009	4694	4652	4737
2010	4717	4665	4771
2011	4741	4678	4806
2012	4764	4690	4843
2013	4789	4702	4879
2014	4812	4712	4916
2015	4838	4724	4954
2016	4862	4735	4993
2017	4890	4749	5035
2018	4916	4758	5075
2019	4943	4774	5118
2020	4968	4786	5162
2021	4998	4799	5209
2022	5028	4811	5254
2023	5057	4822	5302
2024	5086	4834	5350
2025	5115	4849	5398
2026	5147	4859	5450
2027	5176	4872	5501
2028	5206	4881	5549
2029	5233	4889	5597
2030	5261	4895	5646
2031	5287	4902	5693
2032	5313	4904	5745
2033	5338	4908	5796
2034	5361	4913	5847
2035	5383	4917	5900
2036	5404	4919	5952
2037	5424	4921	6004
2038	5442	4916	6058
2039	5462	4913	6107
2040	5480	4907	6163
2041	5499	4900	6217
2042	5518	4901	6269
2043	5533	4893	6323
2044	5557	4883	6384
2045	5575	4872	6445
2046	5595	4860	6505
2047	5616	4855	6570
2048	5634	4847	6630
2049	5654	4842	6702
2050	5676	4835	6757

**Table 2.** Predictive Distribution of the Population in NORWAY, in Ages 0-19 (in 1.000's), in 2004-2050, Median with Lower and Upper Limits of 80% Prediction Intervals.

Year	Median	Lower	Upper
2004	1188	1186	1190
2005	1194	1190	1199
2006	1199	1191	1207
2007	1202	1190	1214
2008	1203	1187	1219
2009	1200	1180	1222
2010	1195	1170	1222
2011	1188	1157	1222
2012	1181	1144	1221
2013	1174	1132	1223
2014	1169	1120	1225
2015	1163	1107	1228
2016	1158	1094	1232
2017	1152	1080	1236
2018	1149	1067	1243
2019	1147	1056	1252
2020	1145	1043	1262
2021	1144	1032	1274
2022	1145	1022	1289
2023	1149	1014	1306
2024	1153	1006	1325
2025	1159	1001	1343
2026	1166	997	1367
2027	1171	991	1391
2028	1177	987	1413
2029	1184	981	1438
2030	1194	976	1465
2031	1199	972	1490
2032	1205	968	1511
2033	1214	963	1540
2034	1220	959	1566
2035	1229	955	1593
2036	1233	952	1617
2037	1238	947	1640
2038	1243	940	1664
2039	1249	932	1686
2040	1252	925	1712
2041	1254	915	1731
2042	1256	905	1761
2043	1256	893	1782
2044	1256	884	1812
2045	1254	874	1835
2046	1255	862	1853
2047	1259	853	1878
2048	1257	846	1904
2049	1259	835	1940
2050	1261	825	1969

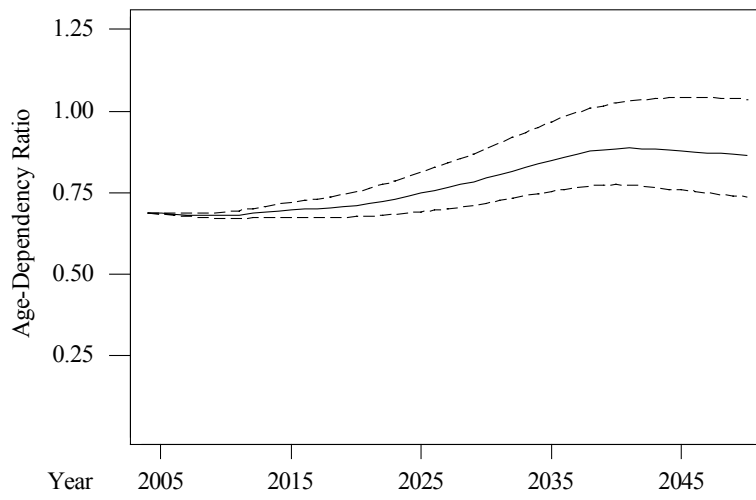
**Table 3.** Predictive Distribution of the Population in NORWAY, in Ages 20-64 (in 1,000's), in 2004-2050, Median with Lower and Upper Limits of 80% Prediction Intervals.

Year	Median	Lower	Upper
2004	2713	2712	2713
2005	2729	2724	2735
2006	2746	2736	2755
2007	2765	2750	2780
2008	2781	2761	2801
2009	2796	2770	2822
2010	2808	2777	2840
2011	2819	2782	2858
2012	2825	2781	2870
2013	2832	2782	2884
2014	2841	2785	2900
2015	2851	2788	2917
2016	2862	2791	2935
2017	2875	2796	2956
2018	2885	2799	2973
2019	2893	2802	2987
2020	2901	2802	3002
2021	2909	2802	3018
2022	2914	2800	3030
2023	2917	2797	3043
2024	2920	2791	3053
2025	2923	2786	3063
2026	2927	2783	3075
2027	2928	2778	3085
2028	2929	2773	3093
2029	2929	2765	3102
2030	2927	2755	3107
2031	2925	2743	3112
2032	2921	2730	3118
2033	2917	2717	3125
2034	2912	2702	3130
2035	2907	2686	3133
2036	2904	2675	3141
2037	2902	2665	3150
2038	2903	2653	3159
2039	2905	2642	3176
2040	2907	2636	3191
2041	2918	2631	3208
2042	2931	2634	3234
2043	2945	2637	3263
2044	2957	2639	3287
2045	2972	2641	3315
2046	2988	2643	3344
2047	3004	2644	3374
2048	3020	2646	3408
2049	3037	2648	3440
2050	3055	2651	3471

**Table 4.** Predictive Distribution of the Population in NORWAY in Ages 65+ (in 1,000's), in 2004-2050, Median with Lower and Upper Limits of 80% Prediction Intervals.

Year	Median	Lower	Upper
2004	674	672	676
2005	676	672	679
2006	679	673	684
2007	680	673	688
2008	687	677	697
2009	698	686	710
2010	714	700	728
2011	733	716	749
2012	758	738	777
2013	780	758	802
2014	801	776	826
2015	820	793	849
2016	840	809	871
2017	858	824	892
2018	878	840	915
2019	899	858	939
2020	920	875	963
2021	941	892	989
2022	963	910	1015
2023	985	926	1040
2024	1006	942	1066
2025	1027	957	1092
2026	1048	971	1117
2027	1067	985	1142
2028	1087	998	1167
2029	1107	1011	1193
2030	1129	1026	1221
2031	1151	1041	1249
2032	1173	1056	1277
2033	1194	1069	1303
2034	1216	1083	1331
2035	1237	1098	1359
2036	1255	1109	1384
2037	1273	1119	1408
2038	1290	1130	1432
2039	1304	1137	1453
2040	1315	1139	1471
2041	1323	1143	1488
2042	1328	1143	1499
2043	1332	1140	1511
2044	1336	1138	1522
2045	1339	1134	1532
2046	1342	1132	1542
2047	1345	1129	1552
2048	1348	1125	1560
2049	1349	1121	1569
2050	1351	1117	1576

### Age-Dependency Ratio, 2004-2050



**Figure.** Age-Dependency Ratio in NORWAY and 80 % Prediction Intervals, in 2004-2050.

**Table 1.** Predictive Distribution of the Total Population in PORTUGAL (in 1,000's), in 2004-2050, Median with Lower and Upper Limits of 80% Prediction Intervals.

Year	Median	Lower	Upper
2004	10477	10441	10514
2005	10530	10468	10591
2006	10585	10499	10670
2007	10641	10526	10754
2008	10696	10551	10841
2009	10751	10568	10931
2010	10801	10589	11016
2011	10855	10599	11115
2012	10906	10613	11208
2013	10959	10614	11304
2014	11008	10624	11397
2015	11056	10625	11484
2016	11100	10628	11578
2017	11137	10626	11668
2018	11189	10629	11754
2019	11226	10618	11840
2020	11271	10595	11937
2021	11301	10594	12024
2022	11341	10578	12108
2023	11369	10557	12191
2024	11402	10551	12273
2025	11443	10530	12353
2026	11471	10514	12446
2027	11506	10493	12552
2028	11540	10466	12646
2029	11563	10452	12741
2030	11590	10436	12817
2031	11624	10421	12913
2032	11654	10394	13006
2033	11676	10379	13096
2034	11699	10345	13187
2035	11727	10325	13283
2036	11763	10300	13391
2037	11778	10277	13495
2038	11814	10243	13578
2039	11840	10200	13685
2040	11877	10164	13783
2041	11887	10133	13884
2042	11900	10109	13976
2043	11941	10062	14078
2044	11964	10029	14185
2045	11991	9989	14297
2046	11997	9919	14412
2047	12022	9872	14513
2048	12016	9822	14618
2049	12052	9767	14721
2050	12062	9712	14828

**Table 2.** Predictive Distribution of the Population in PORTUGAL, in Ages 0-19 (in 1.000's), in 2004-2050, Median with Lower and Upper Limits of 80% Prediction Intervals.

Year	Median	Lower	Upper
2004	2270	2260	2281
2005	2261	2243	2279
2006	2259	2234	2287
2007	2262	2228	2298
2008	2268	2223	2315
2009	2273	2217	2336
2010	2281	2209	2353
2011	2286	2201	2376
2012	2292	2189	2397
2013	2298	2179	2420
2014	2304	2169	2447
2015	2311	2159	2476
2016	2318	2145	2506
2017	2321	2128	2531
2018	2323	2115	2556
2019	2322	2091	2579
2020	2315	2063	2594
2021	2306	2033	2614
2022	2295	2002	2632
2023	2281	1967	2647
2024	2269	1930	2656
2025	2253	1895	2671
2026	2243	1859	2684
2027	2225	1826	2704
2028	2210	1791	2718
2029	2195	1758	2734
2030	2181	1726	2760
2031	2168	1693	2779
2032	2155	1661	2800
2033	2144	1632	2824
2034	2128	1604	2853
2035	2125	1577	2874
2036	2118	1550	2899
2037	2116	1524	2938
2038	2117	1499	2967
2039	2119	1483	3006
2040	2121	1470	3051
2041	2120	1454	3100
2042	2132	1434	3149
2043	2136	1421	3205
2044	2139	1411	3248
2045	2142	1396	3288
2046	2143	1377	3333
2047	2148	1367	3380
2048	2149	1346	3428
2049	2154	1333	3473
2050	2156	1318	3521

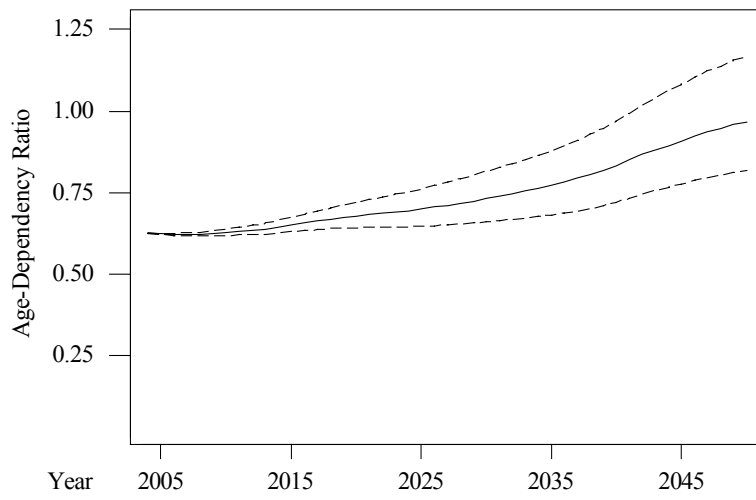
**Table 3.** Predictive Distribution of the Population in PORTUGAL, in Ages 20-64 (in 1,000's), in 2004-2050, Median with Lower and Upper Limits of 80% Prediction Intervals.

Year	Median	Lower	Upper
2004	6447	6422	6473
2005	6488	6445	6531
2006	6526	6467	6585
2007	6562	6485	6641
2008	6593	6491	6692
2009	6617	6493	6738
2010	6636	6493	6783
2011	6653	6483	6824
2012	6673	6476	6875
2013	6689	6461	6915
2014	6693	6435	6950
2015	6699	6410	6977
2016	6699	6389	7008
2017	6702	6362	7037
2018	6698	6336	7062
2019	6703	6309	7090
2020	6710	6291	7123
2021	6711	6262	7151
2022	6717	6251	7191
2023	6715	6219	7226
2024	6722	6200	7263
2025	6723	6171	7284
2026	6725	6137	7311
2027	6717	6099	7344
2028	6715	6063	7367
2029	6704	6026	7393
2030	6687	5983	7412
2031	6678	5939	7431
2032	6666	5908	7451
2033	6651	5865	7465
2034	6638	5823	7495
2035	6625	5777	7509
2036	6608	5719	7517
2037	6578	5653	7528
2038	6552	5589	7536
2039	6520	5522	7546
2040	6493	5459	7535
2041	6438	5379	7533
2042	6389	5306	7519
2043	6354	5233	7523
2044	6321	5168	7506
2045	6283	5098	7515
2046	6258	5030	7514
2047	6221	4970	7500
2048	6189	4926	7515
2049	6170	4883	7526
2050	6154	4830	7540

**Table 4.** Predictive Distribution of the Population in PORTUGAL in Ages 65+ (in 1,000's), in 2004-2050, Median with Lower and Upper Limits of 80% Prediction Intervals.

Year	Median	Lower	Upper
2004	1759	1755	1763
2005	1782	1772	1790
2006	1800	1785	1813
2007	1814	1795	1833
2008	1834	1809	1858
2009	1858	1827	1888
2010	1885	1848	1920
2011	1917	1872	1958
2012	1943	1889	1991
2013	1972	1909	2028
2014	2011	1941	2073
2015	2046	1968	2118
2016	2083	1995	2164
2017	2120	2022	2210
2018	2158	2050	2258
2019	2195	2074	2302
2020	2234	2102	2352
2021	2275	2130	2405
2022	2313	2154	2453
2023	2357	2187	2508
2024	2402	2218	2563
2025	2445	2251	2622
2026	2496	2288	2686
2027	2546	2329	2750
2028	2598	2365	2813
2029	2649	2403	2878
2030	2704	2444	2947
2031	2756	2482	3011
2032	2806	2517	3073
2033	2854	2548	3138
2034	2901	2578	3203
2035	2950	2610	3265
2036	3002	2647	3338
2037	3056	2680	3413
2038	3112	2719	3484
2039	3167	2756	3554
2040	3228	2797	3635
2041	3290	2843	3716
2042	3350	2882	3802
2043	3404	2918	3882
2044	3450	2945	3952
2045	3497	2969	4020
2046	3541	2995	4090
2047	3583	3012	4152
2048	3623	3030	4213
2049	3652	3037	4269
2050	3680	3042	4324

### Age-Dependency Ratio, 2004-2050



**Figure.** Age-Dependency Ratio in PORTUGAL and 80 % Prediction Intervals, in 2004-2050.

**Table 1.** Predictive Distribution of the Total Population in SPAIN (in 1,000's), in 2004-2050, Median with Lower and Upper Limits of 80% Prediction Intervals.

Year	Median	Lower	Upper
2004	42192	42090	42289
2005	42359	42184	42540
2006	42523	42266	42789
2007	42681	42335	43051
2008	42838	42369	43307
2009	42987	42402	43595
2010	43119	42399	43868
2011	43257	42359	44154
2012	43374	42335	44433
2013	43483	42294	44703
2014	43567	42173	44951
2015	43663	42077	45210
2016	43735	41978	45467
2017	43796	41841	45725
2018	43850	41755	45923
2019	43883	41595	46158
2020	43926	41473	46381
2021	43948	41293	46591
2022	43963	41151	46816
2023	44020	40941	47080
2024	44050	40756	47317
2025	44074	40633	47507
2026	44068	40444	47735
2027	44038	40256	47958
2028	44079	40076	48175
2029	44093	39893	48424
2030	44081	39699	48673
2031	44064	39515	48942
2032	44094	39275	49173
2033	44130	39110	49431
2034	44108	38916	49722
2035	44159	38696	50004
2036	44181	38502	50264
2037	44205	38404	50476
2038	44186	38166	50807
2039	44233	38002	51085
2040	44240	37742	51345
2041	44274	37488	51636
2042	44255	37281	51886
2043	44217	37063	52237
2044	44266	36838	52609
2045	44222	36606	52952
2046	44253	36330	53308
2047	44228	36015	53522
2048	44186	35763	53794
2049	44166	35430	54121
2050	44090	35134	54389

**Table 2.** Predictive Distribution of the Population in SPAIN, in Ages 0-19 (in 1.000's), in 2004-2050, Median with Lower and Upper Limits of 80% Prediction Intervals.

Year	Median	Lower	Upper
2004	8460	8430	8489
2005	8403	8349	8461
2006	8369	8284	8457
2007	8348	8230	8480
2008	8337	8178	8512
2009	8333	8124	8556
2010	8332	8067	8613
2011	8323	8004	8668
2012	8316	7935	8728
2013	8301	7853	8790
2014	8287	7780	8847
2015	8271	7701	8906
2016	8260	7615	8972
2017	8236	7519	9027
2018	8208	7424	9084
2019	8167	7310	9110
2020	8093	7181	9132
2021	8024	7029	9138
2022	7931	6852	9134
2023	7836	6674	9141
2024	7743	6490	9147
2025	7629	6306	9135
2026	7512	6132	9137
2027	7398	5951	9102
2028	7294	5793	9098
2029	7209	5640	9094
2030	7109	5507	9097
2031	7044	5362	9110
2032	6963	5225	9150
2033	6900	5111	9231
2034	6853	5010	9262
2035	6815	4901	9327
2036	6802	4818	9412
2037	6771	4745	9533
2038	6759	4697	9660
2039	6768	4652	9805
2040	6788	4594	9922
2041	6814	4564	10060
2042	6873	4511	10247
2043	6900	4486	10391
2044	6928	4464	10578
2045	6968	4455	10723
2046	6985	4435	10928
2047	7013	4405	11108
2048	7061	4376	11286
2049	7097	4332	11420
2050	7104	4292	11611

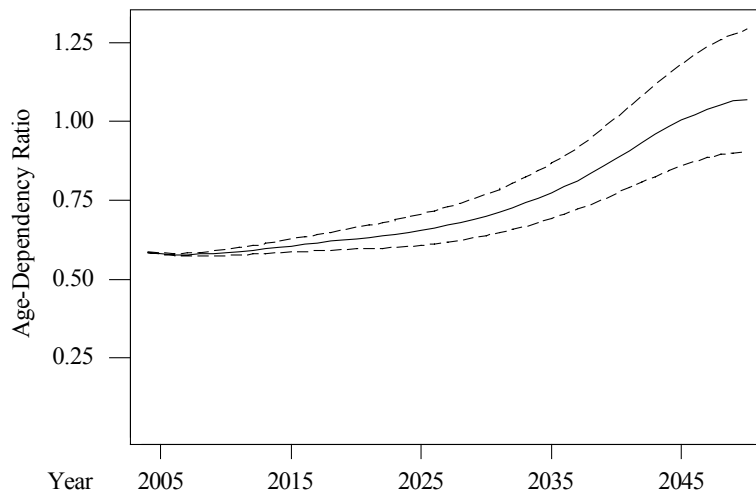
**Table 3.** Predictive Distribution of the Population in SPAIN, in Ages 20-64 (in 1,000's), in 2004-2050, Median with Lower and Upper Limits of 80% Prediction Intervals.

Year	Median	Lower	Upper
2004	26627	26556	26695
2005	26796	26672	26918
2006	26944	26761	27126
2007	27058	26807	27303
2008	27130	26809	27452
2009	27187	26787	27591
2010	27219	26724	27718
2011	27245	26654	27844
2012	27242	26559	27944
2013	27225	26424	28035
2014	27203	26289	28133
2015	27180	26136	28225
2016	27146	26005	28305
2017	27104	25837	28359
2018	27064	25710	28464
2019	27006	25541	28523
2020	26950	25384	28567
2021	26886	25219	28624
2022	26846	25027	28696
2023	26765	24840	28715
2024	26691	24628	28772
2025	26588	24399	28764
2026	26491	24165	28754
2027	26369	23948	28747
2028	26234	23708	28729
2029	26095	23437	28697
2030	25943	23151	28683
2031	25764	22838	28655
2032	25565	22529	28616
2033	25381	22205	28522
2034	25132	21863	28451
2035	24919	21508	28357
2036	24675	21120	28272
2037	24446	20730	28112
2038	24182	20331	28008
2039	23889	19957	27827
2040	23604	19557	27655
2041	23334	19125	27464
2042	22999	18723	27285
2043	22689	18316	27130
2044	22401	17902	26965
2045	22164	17585	26894
2046	21947	17246	26806
2047	21795	16939	26767
2048	21650	16738	26782
2049	21512	16475	26807
2050	21418	16258	26874

**Table 4.** Predictive Distribution of the Population in SPAIN in Ages 65+ (in 1,000's), in 2004-2050, Median with Lower and Upper Limits of 80% Prediction Intervals.

Year	Median	Lower	Upper
2004	7106	7091	7121
2005	7161	7129	7192
2006	7212	7162	7261
2007	7279	7210	7346
2008	7372	7281	7458
2009	7465	7348	7573
2010	7570	7429	7702
2011	7687	7520	7841
2012	7810	7613	7991
2013	7935	7704	8150
2014	8055	7794	8303
2015	8178	7887	8458
2016	8305	7979	8616
2017	8428	8062	8771
2018	8553	8153	8924
2019	8684	8249	9089
2020	8829	8355	9271
2021	8984	8472	9475
2022	9160	8602	9687
2023	9346	8745	9922
2024	9554	8909	10168
2025	9772	9082	10434
2026	9994	9256	10708
2027	10232	9447	10986
2028	10483	9646	11284
2029	10734	9843	11584
2030	10992	10056	11898
2031	11269	10283	12221
2032	11543	10503	12549
2033	11808	10712	12878
2034	12091	10928	13209
2035	12362	11137	13528
2036	12628	11351	13864
2037	12907	11556	14208
2038	13178	11774	14565
2039	13450	11969	14923
2040	13735	12169	15287
2041	14009	12361	15636
2042	14280	12549	15988
2043	14527	12726	16322
2044	14755	12874	16619
2045	14941	12976	16912
2046	15103	13039	17155
2047	15222	13045	17376
2048	15300	13036	17555
2049	15328	12999	17692
2050	15342	12919	17784

### Age-Dependency Ratio, 2004-2050



**Figure.** Age-Dependency Ratio in SPAIN and 80 % Prediction Intervals, in 2004-2050.

**Table 1.** Predictive Distribution of the Total Population in SWEDEN (in 1,000's), in 2004-2050, Median with Lower and Upper Limits of 80% Prediction Intervals.

Year	Median	Lower	Upper
2004	8972	8965	8978
2005	8991	8966	9013
2006	9010	8968	9049
2007	9029	8969	9087
2008	9046	8967	9123
2009	9064	8964	9161
2010	9080	8961	9201
2011	9100	8955	9243
2012	9117	8951	9288
2013	9136	8942	9333
2014	9158	8935	9380
2015	9176	8934	9433
2016	9198	8927	9479
2017	9223	8920	9537
2018	9246	8914	9594
2019	9270	8910	9653
2020	9297	8903	9715
2021	9328	8899	9784
2022	9355	8899	9844
2023	9387	8896	9907
2024	9415	8894	9977
2025	9439	8882	10038
2026	9463	8872	10101
2027	9483	8856	10176
2028	9513	8844	10240
2029	9536	8830	10299
2030	9553	8813	10372
2031	9571	8791	10428
2032	9585	8771	10500
2033	9603	8754	10565
2034	9615	8731	10631
2035	9631	8701	10692
2036	9638	8672	10757
2037	9655	8649	10839
2038	9670	8624	10911
2039	9679	8593	10985
2040	9698	8565	11066
2041	9715	8535	11171
2042	9734	8507	11251
2043	9752	8469	11340
2044	9772	8438	11455
2045	9792	8405	11562
2046	9813	8367	11641
2047	9842	8330	11751
2048	9871	8304	11881
2049	9895	8273	11994
2050	9916	8250	12135

**Table 2.** Predictive Distribution of the Population in SWEDEN, in Ages 0-19 (in 1.000's), in 2004-2050, Median with Lower and Upper Limits of 80% Prediction Intervals.

Year	Median	Lower	Upper
2004	2149	2144	2154
2005	2147	2134	2160
2006	2140	2118	2161
2007	2129	2097	2160
2008	2115	2074	2159
2009	2094	2041	2151
2010	2069	2004	2141
2011	2037	1958	2126
2012	2004	1913	2113
2013	1977	1869	2104
2014	1955	1833	2103
2015	1941	1799	2108
2016	1933	1774	2123
2017	1934	1759	2150
2018	1942	1749	2181
2019	1953	1739	2220
2020	1963	1729	2262
2021	1975	1716	2299
2022	1989	1704	2338
2023	2000	1684	2382
2024	2004	1666	2420
2025	2013	1652	2449
2026	2019	1636	2485
2027	2026	1627	2526
2028	2035	1619	2564
2029	2041	1608	2604
2030	2046	1594	2632
2031	2053	1581	2666
2032	2057	1563	2700
2033	2058	1550	2740
2034	2060	1538	2771
2035	2062	1524	2813
2036	2054	1509	2845
2037	2052	1494	2866
2038	2056	1476	2904
2039	2057	1456	2941
2040	2054	1443	2982
2041	2049	1427	3023
2042	2051	1408	3060
2043	2048	1387	3110
2044	2043	1369	3154
2045	2048	1354	3206
2046	2054	1340	3254
2047	2060	1327	3313
2048	2071	1310	3367
2049	2074	1289	3438
2050	2085	1277	3513

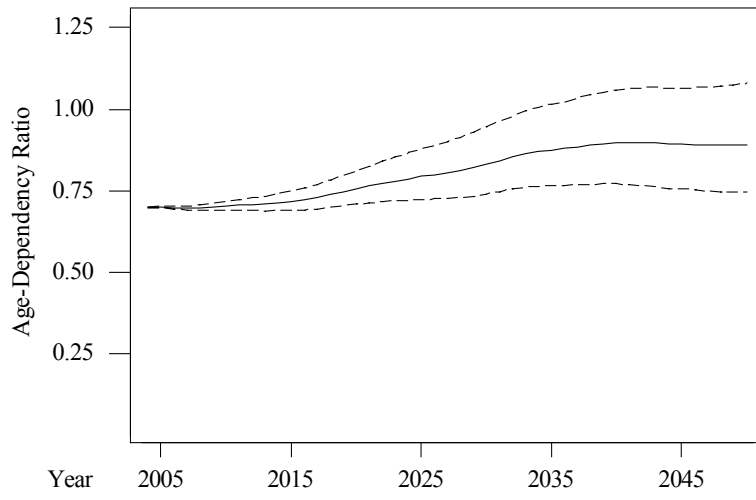
**Table 3.** Predictive Distribution of the Population in SWEDEN, in Ages 20-64 (in 1,000's), in 2004-2050, Median with Lower and Upper Limits of 80% Prediction Intervals.

Year	Median	Lower	Upper
2004	5280	5280	5281
2005	5291	5277	5304
2006	5307	5282	5330
2007	5322	5287	5354
2008	5327	5282	5371
2009	5331	5274	5386
2010	5330	5264	5397
2011	5335	5257	5415
2012	5339	5250	5430
2013	5345	5240	5444
2014	5343	5225	5458
2015	5341	5213	5469
2016	5339	5198	5476
2017	5331	5177	5481
2018	5320	5153	5482
2019	5307	5127	5484
2020	5298	5104	5486
2021	5288	5083	5488
2022	5278	5058	5490
2023	5273	5040	5498
2024	5269	5018	5507
2025	5263	4999	5519
2026	5258	4984	5530
2027	5252	4964	5539
2028	5244	4938	5546
2029	5232	4909	5547
2030	5208	4873	5542
2031	5186	4837	5541
2032	5166	4801	5540
2033	5147	4769	5539
2034	5137	4735	5547
2035	5132	4714	5564
2036	5129	4693	5584
2037	5122	4664	5604
2038	5121	4643	5623
2039	5125	4618	5653
2040	5126	4601	5682
2041	5134	4585	5713
2042	5145	4569	5756
2043	5162	4560	5802
2044	5179	4557	5843
2045	5193	4545	5887
2046	5199	4535	5927
2047	5213	4534	5975
2048	5229	4524	6029
2049	5243	4513	6078
2050	5254	4498	6128

**Table 4.** Predictive Distribution of the Population in SWEDEN in Ages 65+ (in 1,000's), in 2004-2050, Median with Lower and Upper Limits of 80% Prediction Intervals.

Year	Median	Lower	Upper
2004	1542	1538	1546
2005	1553	1545	1561
2006	1563	1551	1576
2007	1578	1560	1594
2008	1604	1581	1624
2009	1639	1611	1665
2010	1682	1648	1713
2011	1726	1687	1762
2012	1771	1725	1813
2013	1814	1762	1862
2014	1855	1796	1910
2015	1891	1825	1953
2016	1923	1850	1993
2017	1951	1870	2028
2018	1978	1890	2062
2019	2006	1910	2096
2020	2032	1925	2129
2021	2058	1939	2165
2022	2085	1956	2202
2023	2110	1971	2237
2024	2134	1980	2269
2025	2156	1990	2303
2026	2175	1998	2335
2027	2195	2007	2367
2028	2218	2018	2404
2029	2245	2032	2445
2030	2280	2053	2495
2031	2313	2075	2538
2032	2346	2094	2581
2033	2374	2112	2624
2034	2396	2120	2659
2035	2411	2124	2686
2036	2427	2131	2714
2037	2446	2139	2746
2038	2465	2142	2778
2039	2480	2145	2808
2040	2493	2147	2837
2041	2503	2150	2855
2042	2508	2147	2873
2043	2510	2138	2888
2044	2511	2125	2899
2045	2516	2120	2914
2046	2521	2112	2935
2047	2523	2102	2945
2048	2525	2092	2958
2049	2525	2086	2973
2050	2528	2077	2989

### Age-Dependency Ratio, 2004-2050



**Figure.** Age-Dependency Ratio in SWEDEN and 80 % Prediction Intervals, in 2004-2050.

**Table 1.** Predictive Distribution of the Total Population in SWITZERLAND (in 1,000's), in 2004-2050, Median with Lower and Upper Limits of 80% Prediction Intervals.

Year	Median	Lower	Upper
2004	7369	7340	7396
2005	7398	7350	7444
2006	7429	7361	7491
2007	7456	7372	7539
2008	7483	7381	7583
2009	7511	7393	7628
2010	7537	7399	7672
2011	7561	7405	7715
2012	7586	7412	7756
2013	7612	7417	7798
2014	7637	7425	7840
2015	7659	7431	7882
2016	7683	7435	7925
2017	7708	7442	7966
2018	7730	7443	8011
2019	7754	7445	8055
2020	7775	7448	8097
2021	7799	7447	8144
2022	7822	7445	8183
2023	7843	7446	8227
2024	7862	7443	8272
2025	7882	7441	8308
2026	7901	7441	8357
2027	7919	7434	8401
2028	7934	7431	8442
2029	7947	7424	8480
2030	7961	7418	8524
2031	7971	7410	8563
2032	7980	7394	8603
2033	7988	7378	8640
2034	7996	7361	8675
2035	8004	7339	8717
2036	8009	7319	8757
2037	8011	7296	8796
2038	8016	7273	8828
2039	8019	7240	8859
2040	8019	7211	8899
2041	8016	7185	8938
2042	8009	7159	8974
2043	8003	7120	9011
2044	7997	7084	9054
2045	7993	7044	9092
2046	7982	7001	9122
2047	7977	6951	9159
2048	7972	6916	9192
2049	7970	6880	9232
2050	7969	6839	9254

**Table 2.** Predictive Distribution of the Population in SWITZERLAND, in Ages 0-19 (in 1.000's), in 2004-2050, Median with Lower and Upper Limits of 80% Prediction Intervals.

Year	Median	Lower	Upper
2004	1664	1656	1671
2005	1656	1643	1668
2006	1648	1629	1665
2007	1637	1613	1661
2008	1626	1596	1656
2009	1612	1575	1646
2010	1597	1554	1637
2011	1579	1529	1627
2012	1561	1504	1617
2013	1543	1479	1607
2014	1529	1457	1601
2015	1516	1435	1597
2016	1504	1413	1596
2017	1492	1392	1595
2018	1482	1374	1595
2019	1473	1354	1596
2020	1464	1333	1599
2021	1455	1313	1602
2022	1451	1299	1611
2023	1448	1284	1625
2024	1447	1274	1641
2025	1446	1261	1655
2026	1447	1251	1675
2027	1446	1237	1693
2028	1447	1226	1715
2029	1447	1213	1737
2030	1446	1201	1758
2031	1447	1188	1775
2032	1447	1177	1789
2033	1445	1163	1805
2034	1444	1147	1825
2035	1441	1132	1844
2036	1437	1120	1862
2037	1435	1106	1879
2038	1428	1089	1894
2039	1424	1072	1907
2040	1417	1056	1922
2041	1410	1039	1942
2042	1403	1025	1955
2043	1397	1009	1968
2044	1390	992	1978
2045	1383	975	1994
2046	1377	960	2010
2047	1371	946	2023
2048	1365	932	2047
2049	1362	917	2066
2050	1357	902	2091

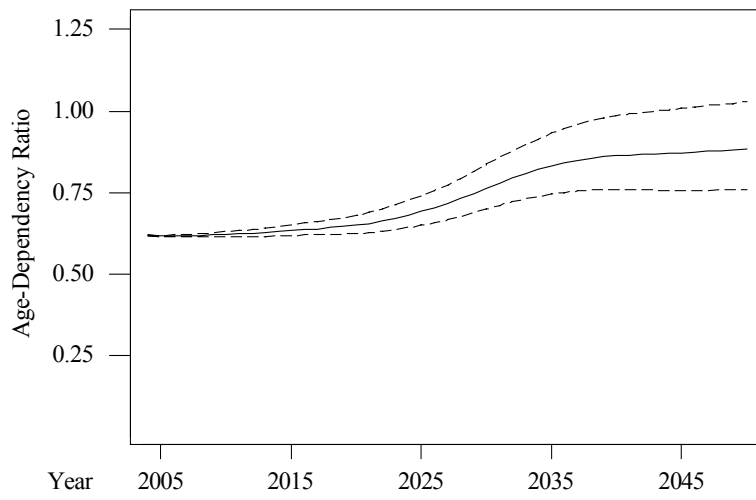
**Table 3.** Predictive Distribution of the Population in SWITZERLAND, in Ages 20-64 (in 1,000's), in 2004-2050, Median with Lower and Upper Limits of 80% Prediction Intervals.

Year	Median	Lower	Upper
2004	4554	4534	4573
2005	4575	4541	4608
2006	4596	4549	4641
2007	4613	4553	4669
2008	4625	4553	4693
2009	4637	4553	4718
2010	4646	4552	4740
2011	4658	4551	4762
2012	4668	4549	4782
2013	4678	4549	4799
2014	4683	4543	4815
2015	4690	4540	4832
2016	4694	4534	4847
2017	4703	4531	4865
2018	4705	4522	4879
2019	4709	4516	4893
2020	4711	4507	4905
2021	4712	4494	4916
2022	4703	4473	4921
2023	4690	4450	4919
2024	4675	4422	4914
2025	4656	4395	4907
2026	4635	4361	4897
2027	4611	4326	4886
2028	4584	4286	4870
2029	4551	4241	4851
2030	4518	4196	4829
2031	4483	4151	4809
2032	4450	4110	4787
2033	4423	4072	4775
2034	4399	4032	4762
2035	4373	3995	4754
2036	4358	3963	4746
2037	4339	3932	4741
2038	4326	3904	4739
2039	4319	3883	4738
2040	4309	3862	4745
2041	4304	3843	4748
2042	4298	3823	4759
2043	4294	3801	4766
2044	4291	3784	4773
2045	4286	3771	4775
2046	4278	3752	4777
2047	4270	3736	4785
2048	4260	3710	4789
2049	4254	3692	4796
2050	4245	3671	4803

**Table 4.** Predictive Distribution of the Population in SWITZERLAND in Ages 65+ (in 1,000's), in 2004-2050, Median with Lower and Upper Limits of 80% Prediction Intervals.

Year	Median	Lower	Upper
2004	1151	1148	1153
2005	1167	1162	1172
2006	1185	1176	1193
2007	1207	1195	1218
2008	1233	1218	1247
2009	1262	1244	1280
2010	1293	1271	1315
2011	1325	1298	1350
2012	1358	1327	1389
2013	1391	1356	1426
2014	1423	1384	1464
2015	1453	1410	1500
2016	1485	1435	1537
2017	1511	1456	1569
2018	1541	1480	1604
2019	1570	1503	1639
2020	1600	1526	1676
2021	1631	1550	1713
2022	1665	1576	1753
2023	1701	1602	1797
2024	1737	1630	1839
2025	1776	1661	1885
2026	1816	1693	1932
2027	1857	1725	1981
2028	1901	1760	2033
2029	1946	1796	2088
2030	1994	1832	2146
2031	2038	1867	2199
2032	2079	1901	2251
2033	2117	1928	2297
2034	2150	1950	2343
2035	2181	1969	2385
2036	2208	1983	2422
2037	2232	1996	2455
2038	2250	2005	2487
2039	2266	2009	2512
2040	2279	2010	2534
2041	2287	2008	2555
2042	2294	2004	2574
2043	2303	2002	2592
2044	2310	1995	2609
2045	2316	1989	2630
2046	2324	1987	2651
2047	2330	1980	2669
2048	2338	1977	2689
2049	2343	1972	2703
2050	2349	1971	2720

### Age-Dependency Ratio, 2004-2050



**Figure.** Age-Dependency Ratio in SWITZERLAND and 80 % Prediction Intervals, in 2004-2050.

**Table 1.** Predictive Distribution of the Total Population in UNITED KINGDOM (in 1,000's), in 2004-2050, Median with Lower and Upper Limits of 80% Prediction Intervals.

Year	Median	Lower	Upper
2004	59370	59249	59487
2005	59566	59356	59765
2006	59765	59452	60065
2007	59960	59540	60357
2008	60141	59612	60656
2009	60342	59656	60984
2010	60529	59699	61284
2011	60718	59733	61631
2012	60916	59786	61994
2013	61105	59802	62359
2014	61305	59832	62770
2015	61529	59881	63127
2016	61742	59861	63514
2017	61951	59932	63936
2018	62154	59956	64339
2019	62412	59960	64780
2020	62662	60000	65187
2021	62871	60027	65654
2022	63128	60071	66109
2023	63405	60077	66563
2024	63641	60135	67061
2025	63869	60133	67580
2026	64153	60055	68048
2027	64403	60114	68537
2028	64616	60148	69054
2029	64881	60113	69573
2030	65103	60119	70121
2031	65370	60051	70621
2032	65618	60000	71120
2033	65860	59991	71672
2034	66064	59926	72276
2035	66265	59857	72868
2036	66518	59833	73490
2037	66700	59769	73904
2038	66897	59669	74498
2039	67067	59591	75069
2040	67293	59504	75577
2041	67504	59421	76304
2042	67757	59384	76893
2043	67975	59210	77503
2044	68137	59125	78147
2045	68356	59034	78899
2046	68615	58897	79593
2047	68751	58687	80200
2048	69019	58641	80932
2049	69244	58452	81653
2050	69426	58362	82362

**Table 2.** Predictive Distribution of the Population in UNITED KINGDOM, in Ages 0-19 (in 1.000's), in 2004-2050, Median with Lower and Upper Limits of 80% Prediction Intervals.

Year	Median	Lower	Upper
2004	14723	14689	14757
2005	14704	14645	14763
2006	14646	14555	14736
2007	14588	14459	14715
2008	14514	14347	14686
2009	14423	14201	14641
2010	14339	14062	14611
2011	14242	13915	14575
2012	14136	13739	14543
2013	14045	13564	14524
2014	13983	13418	14534
2015	13927	13281	14566
2016	13908	13154	14623
2017	13882	13046	14709
2018	13840	12914	14789
2019	13837	12796	14908
2020	13845	12697	15066
2021	13873	12601	15232
2022	13907	12522	15426
2023	13940	12437	15627
2024	13987	12355	15825
2025	14034	12243	16057
2026	14080	12151	16300
2027	14139	12082	16560
2028	14172	11981	16791
2029	14243	11879	17060
2030	14314	11816	17378
2031	14368	11728	17672
2032	14430	11652	17924
2033	14471	11579	18188
2034	14514	11498	18470
2035	14571	11381	18761
2036	14615	11291	19065
2037	14663	11169	19350
2038	14702	11023	19638
2039	14694	10901	19938
2040	14745	10818	20135
2041	14765	10713	20400
2042	14759	10622	20611
2043	14790	10509	20855
2044	14814	10440	21102
2045	14851	10351	21500
2046	14885	10218	21824
2047	14904	10135	22139
2048	14993	10013	22383
2049	15043	9928	22645
2050	15059	9847	23084

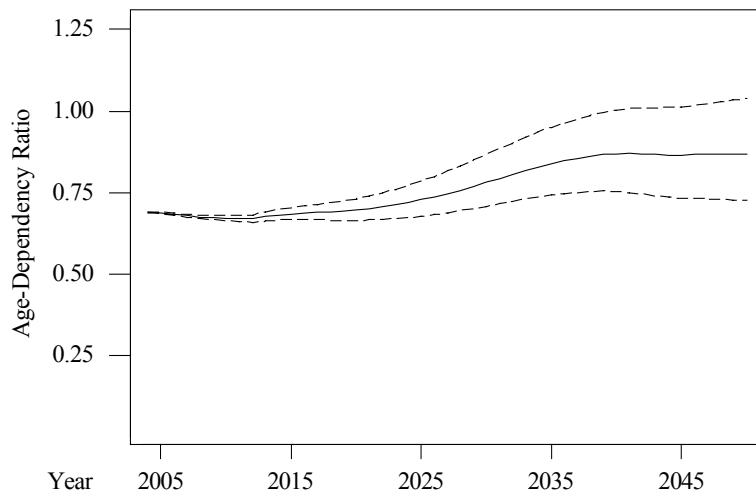
**Table 3.** Predictive Distribution of the Population in UNITED KINGDOM, in Ages 20-64 (in 1,000's), in 2004-2050, Median with Lower and Upper Limits of 80% Prediction Intervals.

Year	Median	Lower	Upper
2004	35153	35070	35237
2005	35306	35162	35442
2006	35499	35290	35703
2007	35719	35442	35993
2008	35909	35555	36254
2009	36088	35628	36502
2010	36204	35662	36703
2011	36347	35722	36930
2012	36486	35749	37160
2013	36457	35630	37269
2014	36462	35539	37406
2015	36524	35471	37561
2016	36579	35427	37742
2017	36662	35457	37937
2018	36759	35423	38154
2019	36834	35372	38320
2020	36907	35372	38480
2021	36961	35294	38635
2022	37010	35172	38770
2023	36990	35089	38862
2024	36996	34994	38955
2025	36975	34861	39039
2026	36936	34687	39144
2027	36849	34546	39165
2028	36753	34322	39199
2029	36650	34062	39185
2030	36513	33831	39211
2031	36394	33579	39219
2032	36298	33344	39225
2033	36190	33094	39216
2034	36112	32869	39221
2035	36054	32662	39304
2036	35999	32534	39348
2037	35940	32320	39421
2038	35932	32175	39596
2039	35963	32063	39756
2040	36031	31964	39955
2041	36164	31973	40207
2042	36273	31936	40463
2043	36446	31944	40795
2044	36596	31944	41117
2045	36753	31934	41381
2046	36859	31857	41656
2047	36975	31861	41980
2048	37092	31828	42279
2049	37231	31765	42616
2050	37305	31700	42886

**Table 4.** Predictive Distribution of the Population in UNITED KINGDOM in Ages 65+ (in 1,000's), in 2004-2050, Median with Lower and Upper Limits of 80% Prediction Intervals.

Year	Median	Lower	Upper
2004	9493	9469	9517
2005	9559	9508	9610
2006	9618	9537	9695
2007	9649	9541	9756
2008	9715	9577	9847
2009	9836	9661	9997
2010	9979	9769	10170
2011	10128	9882	10349
2012	10292	10011	10545
2013	10605	10281	10894
2014	10865	10499	11195
2015	11073	10658	11438
2016	11255	10783	11665
2017	11414	10899	11866
2018	11562	11017	12066
2019	11724	11121	12281
2020	11893	11240	12495
2021	12048	11343	12700
2022	12224	11453	12920
2023	12421	11576	13168
2024	12633	11713	13437
2025	12848	11867	13727
2026	13084	12034	14013
2027	13337	12216	14333
2028	13607	12392	14676
2029	13886	12593	15032
2030	14174	12819	15389
2031	14460	13030	15751
2032	14730	13236	16112
2033	15002	13425	16470
2034	15245	13586	16798
2035	15479	13747	17115
2036	15688	13857	17408
2037	15896	13981	17696
2038	16077	14086	17968
2039	16224	14157	18195
2040	16307	14145	18369
2041	16362	14114	18514
2042	16404	14065	18626
2043	16416	14011	18734
2044	16433	13921	18851
2045	16477	13882	18995
2046	16556	13859	19188
2047	16635	13838	19331
2048	16665	13807	19468
2049	16712	13776	19613
2050	16775	13750	19785

### Age-Dependency Ratio, 2004-2050



**Figure.** Age-Dependency Ratio in UNITED KINGDOM and 80 % Prediction Intervals, in 2004-2050.