

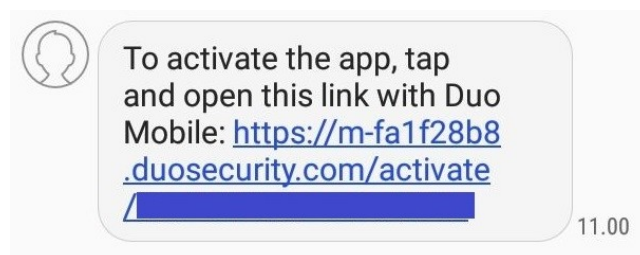
Login instructions for FIONA Remote access system

Preparations

Logging in to the FIONA Remote access system requires some preparations by the user. First, the user needs to download the Duo mobile application to your phone for two-stage identification. It can be downloaded from the following locations:

- Android: Google Play Store ([link](#))
- iOS: App Store ([link](#))

After downloading the Duo Mobile app, the user needs to wait for the application to be activated. Activation of the application requires a link that is delivered as a text message. FIONA's maintenance orders the message for the user and it looks like this:



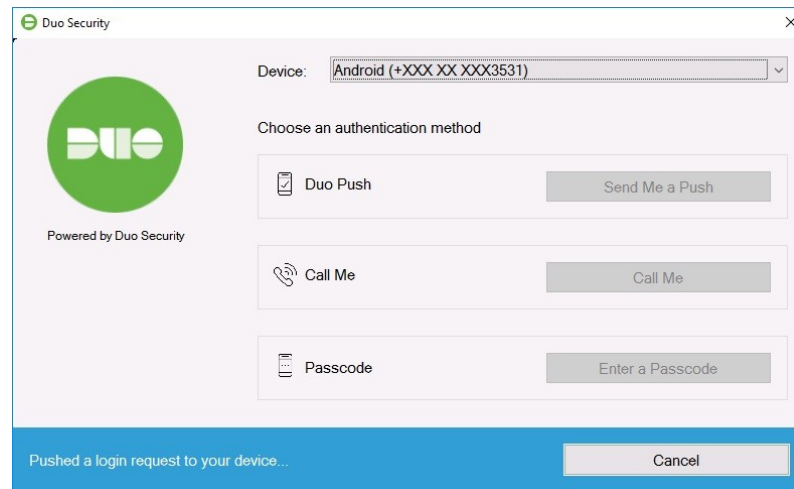
Logging in

Before logging in, it is recommended that you set the browser to full screen mode so that the resolution and dimensions of the remote desktop are correct.

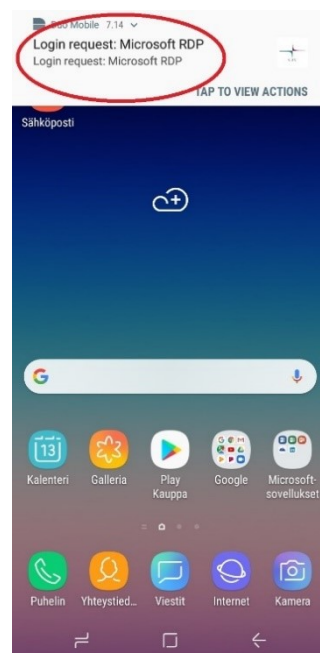
The login takes place at <https://fiona.stat.fi>. On the page the user can select their organisation from the list on the right-hand side for strong identification. After this, identification is made either through Haka, Suomi.fi, Edugain or the Virtu/Government identification service.

If the user has identifiers for more than one remote access project, the project is selected at this stage. If the identifiers are for only one project, the user will be directed straight to the mobile certificate stage.

At this stage, three alternative ways to verify logging in with Duo are visible on the screen, but these need not be taken into consideration:



The user is automatically directed from this view to the remote desktop after accepting the approval request in the phone's Duo application with the green "APPROVE" selection. The request does not appear directly on the telephone screen but must (at least in an Android phone) be opened through the notification menu at the top of the page.



Logging out

At the end of working with remote access use, it is recommended that you log out completely from the system. This is done by selecting the "character icon" in the Startup menu and after that "Sign out". If the user has in progress runs or other long-term application performances, the connection can be disconnected while leaving the session open. To do this, select the "power button" in the Startup menu and then "Disconnect".

