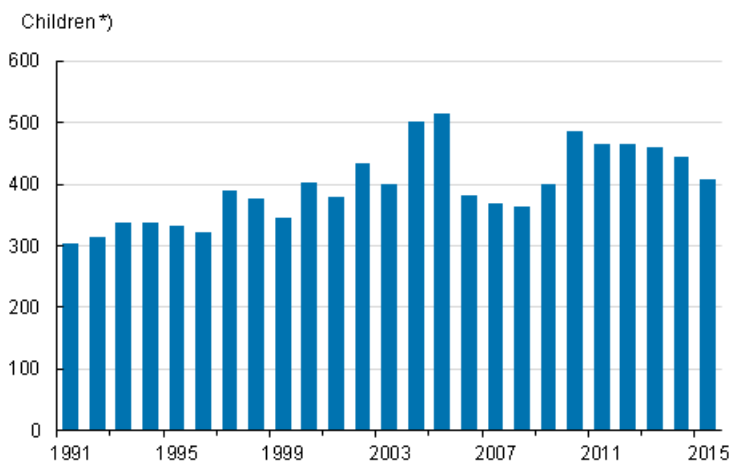


Adoptions 2015

Number of adoptions decreased in 2015

According to Statistics Finland, there were 407 adoptions in Finland in 2015. The figure was 38 lower than in the year before. The number of domestic adoptions remained unchanged and the number of adoptions of children born abroad went down by 38. The number of domestic adoptions was 284 and the number of adoptions from abroad was 123.

Adoptions in 1991–2015



*) Law of registered partnerships was changed in 2009.

Of all persons adopted in Finland in 2015, 193 were girls and 214 boys. Most of the adopted were small children. In all, 236 of them were aged under five. Ninety-two were over the age of 18. Children adopted from abroad were rarely over the age of ten. In domestic adoptions, 86 were aged over 18. The number of internal adoptions within families of registered same-sex partnerships grew by 13 and numbered 128 last year.

The largest group in the adoptions from abroad to Finland was children born in South Africa and second largest was children born in China. Adoptions of children born in South Africa numbered 34 and those of children born in China 26. The majority of children adopted from China were boys. Altogether, 20 children born in Thailand were adopted to Finland. Most children were adopted to Finland from South Africa and China also in 2014.

Three-quarters of the adoptions from abroad were made by two parents. Close on one-third of the adoptions of children born in Finland were made by two parents, when account is not taken of internal adoptions within families of registered same-sex partnerships. In adoptions from abroad by two parents, the adoptive father was typically aged 40 to 44 and the adoptive mother was aged 35 to 39.

Contents

Tables

Appendix tables

Appendix table 1. Adoptions by age of child and by birthplace 2010–2015.....	4
--	---

Figures

Appendix figures

Appendix figure 1. Adoptions of foreign born children by country of birth 2015.....	5
---	---

Appendix figure 2. Domestic adoptions by adoption parent’s marital status in 1991–2015.....	5
---	---

Appendix figure 3. Adoptions of children born abroad to Finland 1991–2015 (the figure was corrected on 10 July 2016).....	6
---	---

Quality description, adoptions 2015.....	7
--	---

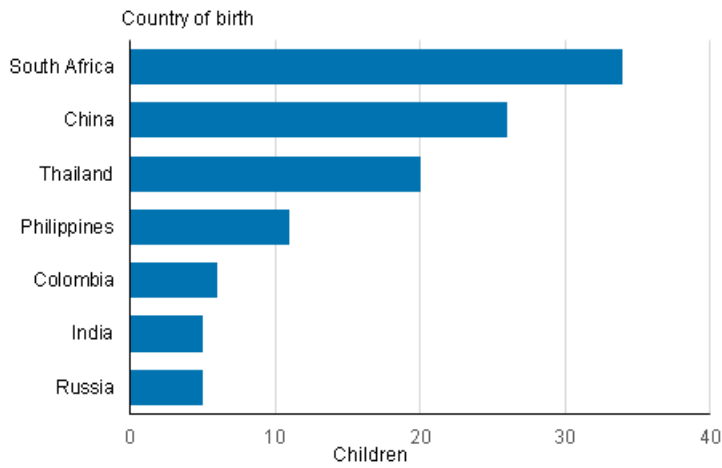
Appendix tables

Appendix table 1. Adoptions by age of child and by birthplace 2010–2015

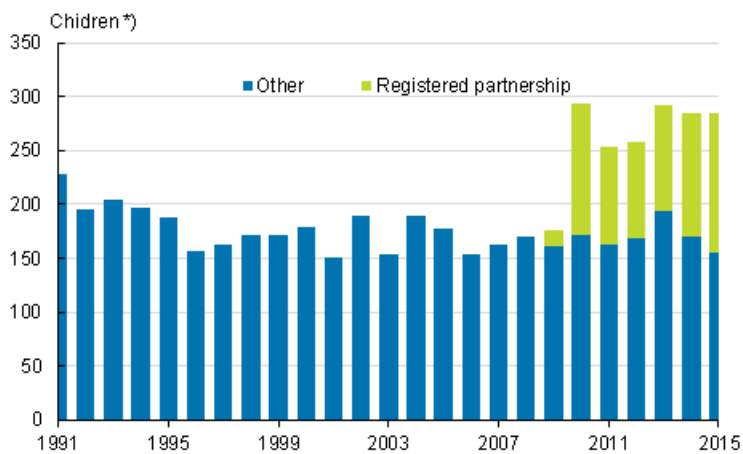
Birthplace	Age of child						
		2010	2011	2012	2013	2014	2015
Adoptions, total	Age groups, total	485	465	466	459	445	407
	0 - 4	291	285	271	269	259	236
	5 - 9	90	59	75	67	59	47
	10 - 19	39	54	48	40	47	44
	20 - 39	42	54	59	56	61	61
	40 -	23	13	13	27	19	19
Finland	Age groups, total	293	253	258	292	284	284
	0 - 4	145	118	124	152	147	155
	5 - 9	58	28	39	34	29	21
	10 - 19	32	44	31	28	36	32
	20 - 39	36	50	51	52	53	58
	40 -	22	13	13	26	19	18
Born abroad	Age groups, total	192	212	208	167	161	123
	0 - 4	146	167	147	117	112	81
	5 - 9	32	31	36	33	30	26
	10 - 19	7	10	17	12	11	12
	20 - 39	6	4	8	4	8	3
	40 -	1	-	-	1	-	1

Appendix figures

Appendix figure 1. Adoptions of foreign born children by country of birth 2015

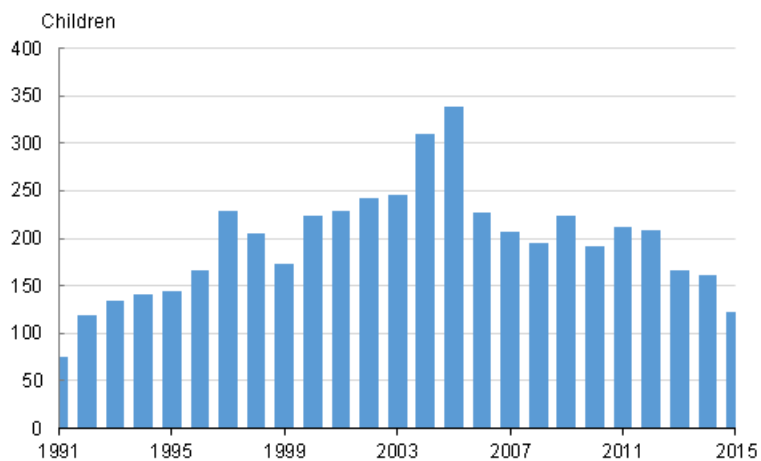


Appendix figure 2. Domestic adoptions by adoption parent's marital status in 1991–2015



*) Law of registered partnerships was changed in 2009.

Appendix figure 3. Adoptions of children born abroad to Finland 1991–2015 (the figure was corrected on 10 July 2016)



Quality description, adoptions 2015

1. Relevance of statistical information

The main source used when producing Finnish population statistics is the Population Information System of the Population Register Centre. Changes in the data on the vital events of the resident population are updated into the Population Information System continuously by local population register authorities. From 1971 Statistics Finland has obtained population data from the Population Register Centre.

The last population registration was carried out in Finland on 1 January 1989. The data stored in the Population Information System are specified in the act on Population Information System and the certificate services of the Population Register Centre (21 August 2009/661).

Statistics Finland's function is to compile statistics on conditions in society (Statistics Finland Act of 24 January 1992/48). These also include demographic statistics. Statistics Finland's Rules of Procedure defines the Population and Social Statistics unit as the producer of demographic statistics (Statistics Finland's Rules of Procedure, TK-00-580-16).

In accordance with the Act on the Municipality of Domicile, the municipality of domicile and the place of residence of individuals are recorded in the Population Information System. The municipality in which a person lives or the one construed by the inhabitant as the municipality of domicile on the grounds of residence, family ties, livelihood or other equivalent circumstances, or to which the inhabitant has close links due to the aforementioned circumstances is deemed the municipality of domicile. (Act on the Municipality of Domicile, 201/1994.) The population registered in the Population Information System is divided into those present and those absent. Those present are permanent residents of Finland, either Finnish nationals or aliens. Those absent are Finnish nationals who when emigrating from the country have reported that they intend to be absent from Finland for more than one year, with the exception of Finnish nationals who are diplomats and those working in development co-operation (Act on the Municipality of Domicile, 201/1994.) Only changes in the population resident in Finland on the day of the event are taken into account when compiling statistics of vital events.

Persons moving to Finland from abroad are classified in the population statistics if the place of residence they have declared as their municipality of domicile is later confirmed as their place of residence. A Nordic citizen having entered the country must notify the register office if his/her intended stay in the country exceeds three months. The register office will update his/her data in the Population Information System (Act 661/2009). A Finnish citizen having entered the country must notify the register office if his/her intended stay in the country exceeds three months. The register office will update his/her data in the Population Information System (Act 661/2009). The intend to stay in Finland for clearly more than one year is the prerequisite for registering of the third country citizens into the population of Finland. The length of studying from entry into the country or the length of employment contracts must often be at least two years for a foreign citizen to receive the right to a place of domicile if a person does not have EU citizenship. The intend of staying in Finland for one year or more is the prerequisite for registering of the citizens of EU countries into the population of Finland. At a justified request, the information on a foreign citizen may also be entered after a short stay if he/she has, for example, a temporary place of residence in Finland as defined in the Act on the Municipality of Domicile and the entry is necessary for the realisation of rights related to employment or a similar circumstance (Act 661/2009).

Adoptions

Adoption, or acceptance as one's own child, refers to the creation of a parent-child relationship that is confirmed by a court decision and replaces the biological parent-child relationship. A new law (391/2009) took effect in September 2009 and it gave possibility to apply for adoption to her or him who lived in a registered partnership so that another partner had children. An adoption is taken into consideration in statistics when at least one of the adoptive parents is permanently resident in Finland at the time of the decision. The permanent place of residence of the adopted child at the time of the decision has no significance when cases are selected into statistics.

2. Methodological description of survey

The main source used when producing Finnish population statistics is the Population Information System of the Population Register Centre. Local register office updates a Population Information System with information, which it gets from persons experiencing vital events and parishes of the Evangelical-Lutheran and Greek Orthodox churches. Hospitals send information of births and deaths in machine language format to the maintenance of Population Information System on a daily basis when these vital events have happened in hospitals. The Finnish Immigration Services decide mostly about the granting of Finnish citizenships (the Nationality Act 359/2003) and enters data about the decisions into the Population Information System. Local courts take information of decisions of adoptions and divorces dealt in the court into the Population Information System. Statistics Finland receives the updated data of vital events in machine-language format on a weekly basis.

The deadline for delivering data to Statistics Finland on vital events in the statistical year is the end of January of the following year. The exception to this is the data on stillbirths, which were expected by the end of August. Data on population changes in statistical year delivered to Statistics Finland after this date are included in the data of the following year.

3. Correctness and accuracy of data

In general, the Population Information System of the Population Register Centre can be considered very exhaustive as regards persons. In order that a person obtains a personal identity code, he or she has to be registered in the Population Information System. The registration is possible if he or she moves to Finland permanently or temporarily. It is practically difficult to live in Finland without a personal identity code. A personal identity code is needed so that one can work legally, open a bank account, have dealings with authorities and so on. It can be safely assumed that Finland cannot have any substantial numbers of 'moonlight workers' who receive their pay in cash for periods of over one year, for example.

After abolishment of yearly checking of domicile registers (January 1) in 1989 the Population Information System has been maintained only by notifications of changes to population information. Their correctness level is determined by a reliability survey made on the addresses in the Population Information System.

The Population Register Centre charges Statistics Finland with the task of conducting yearly a sample survey on correctness of address information. Around 11,000 people are asked whether their address in the Population Information System is correct. In the 2012 survey, the address was correct for 98.9 per cent of the respondents.

In connection with municipal elections, returned notifications of voting sent to foreigners usually reveal around 1,000 persons who have moved from the country without giving notice and are thus still included in the Finnish population. The local register office removes them from the resident population in the Population Information System before the following turn of the year.

4. Timeliness and promptness of published data

Final vital statistics are published yearly in April to May, except for those on stillbirths, which are released in September. Since 1999 the regional division used has been that of the first day of the following year. Thus the municipalities that unite on the first day of the new year are already combined in the statistics on the last day of the previous year. Information on the vital statistics of the united municipalities before the unification is available from 2003 onwards.

Preliminary statistics of population changes and population is released quarterly always at the end of the month following the previous quarter. Summary data of monthly population changes a population is released every month three weeks after the end the month. Preliminary population statistics by municipality are available by month. Monthly statistics of population changes by municipality is chargeable statistics and it is released monthly.

5. Accessibility and transparency/clarity of data

Basic population data are available in electronic form by municipality or with larger regional divisions than municipality in StatFin service in Statistics Finland's free Statistical Database on the internet.

General information and long time series on the population of the whole country can be found from the home page of Demographic Statistics at: http://tilastokeskus.fi/til/synt/tau_en.html.

The chargeable information service contains more specified information about the population by sub-area of municipality, for example.

6. Comparability of statistics

Comparable regional vital statistics series are available from 1987. The tables always indicate which regional division is used.

Vital statistics data on the numbers of births, deaths and marriages contracted are available from 1749 onwards. From 1773 there are data about mothers having given birth by five-year age group and from 1936 about all children born by age of mother. After the statistical revision of 1877 collection of data on deaths was started by one-year age group, which made it possible to begin calculation of accurate mortality and lifetime tables from the 1880s onwards. On account of this statistical revision, annual collection of data on migration and divorces was also started. In 1987-93 adoptions of Finnish born children contains some cases that are not new registrations of parental relationships but changes of heritage relationships of persons in adoption families.

7. Coherence and consistency/uniformity

Statistics Finland's other statistics use the data of demographic statistics as basic information on population. Consequently, Statistics Finland's other statistics correspond to demographic statistics.

Inquiries

Matti Saari 029 551 3401
Director in charge:
Jari Tarkoma

info@stat.fi
www.stat.fi
Source: Population and Justice Statistics. Statistics Finland