

# Job vacancy survey

2012, 1st quarter

## More open job vacancies in the first quarter than one year earlier

According to the Job Vacancy Survey of Statistics Finland, there were 72,600 open job vacancies in the first quarter of 2012, which is 23 per cent more than one year earlier (59,000). The measurement for the first quarter was taken on 1 March.

### Job vacancies 2011/I – 2012/I

	Year/Quarter	
	2011/I	2012/I
Job vacancies	59 000	72 600
Part-time	22 %	17 %
Fixed term	53 %	49 %
Hard-to-fill vacancies	36 %	34 %

In all, 51,200, or 71 per cent, of the job vacancies in the first quarter of 2012 were in private enterprises. Compared with the quarter one year earlier, the number of job vacancies went up especially in manufacturing (3,700), public administration, education, and human health and social work activities (3,100), and in trade (2,700). Examined by region, open job vacancies increased in all major regions.

In the first quarter of 2012, the share of part-time vacancies among all vacancies decreased by five percentage points and that of fixed-term vacancies by four percentage points from the respective quarter of the year before. The share of hard-to-fill vacancies diminished from 36 to 34 per cent.

Statistics Finland has been collecting data on job vacancies quarterly since the beginning of 2002. The statistics are based on a sample of establishments of enterprises and general government. The data are collected with telephone interviews and web questionnaires. The statistics are decreed by a regulation of the European Union. The objective is to produce up-to-date and comparable information about the number and structure of job openings on the labour markets of EU Member States.

Starting from the first quarter of 2012, the data from the Job Vacancy Survey will be published according to the 2012 classification of major regions. Previously released regional data are not comparable with data by the new classification of major regions. Regional data from 2010 onwards based on the new classification of major regions can be found in the StatFin table “035. Avoimet työpaikat suuralueen (2012) mukaan”

(only in Finnish). Detailed information about the classification of major regions is available on the Classifications pages.

The headings of the Appendix tables and Figure 5 in the data releases of 2010 and 2011 have been corrected on 16 May 2012. The presented figures concerned provinces and not major regions as the headings previously indicated. The figures in the tables have not changed.

# Contents

## Tables

### Appendix tables

Appendix table 1. Job vacancies by the quarters 2011/I - 2012/I.....	4
Appendix table 2. Job vacancies by size of the local kind of activity unit 2011/I - 2012/I.....	4
Appendix table 3. Job vacancies by employer sector of the local kind of activity unit 2011/I - 2012/I.....	4
Appendix table 4. Job vacancies by major region (2012) 2011/I - 2012/I.....	5
Appendix table 5. Job vacancies by industry (TOL 2008) 2011/I - 2012/I.....	5
Appendix table 6. Part-time vacancies by major region (2012) 2011/I - 2012/I.....	6
Appendix table 7. Fixed-term vacancies by major region (2012) 2011/I - 2012/I.....	6
Appendix table 8. Hard-to-fill vacancies by major region (2012) 2011/I - 2012/I.....	6

## Figures

### Appendix figures

Appendix figure 1. Job vacancies by the quarters.....	7
Appendix figure 2. Job vacancies by type of employment relationship .....	7
Appendix figure 3. Job vacancies by employer sector.....	8
Appendix figure 4. Job vacancies by size of the local kind of activity unit.....	8
Appendix figure 5. Job vacancies by major region (2012).....	9
Appendix figure 6. Job vacancies by industry (TOL 2008).....	9

## Appendix tables

**Appendix table 1. Job vacancies by the quarters 2011/I - 2012/I**

	Year/Quarter					Change	Change (%)
	2011/I	2011/II	2011/III	2011/IV	2012/I	2011/I - 2012/I	2011/I - 2012/I
Job vacancies							
Total	59 000	49 800	40 000	33 500	72 600	13 600	23
Unoccupied	23 800	22 100	21 100	18 000	30 500	6 700	28
Part-time	12 800	9 600	8 500	5 000	12 200	-600	-5
Fixed term	31 400	23 200	14 200	11 100	35 900	4 500	14
Hard to Fill	21 100	20 000	17 500	15 100	24 500	3 400	16

**Appendix table 2. Job vacancies by size of the local kind of activity unit 2011/I - 2012/I**

	Year/Quarter					Change	Change (%)
	2011/I	2011/II	2011/III	2011/IV	2012/I	2011/I - 2012/I	2011/I - 2012/I
Employees							
Total	59 000	49 800	40 000	33 500	72 600	13 600	23
1-4 persons	8 800	8 900	6 400	6 800	16 200	7 400	84
5-10 persons	12 700	9 400	8 300	6 600	11 600	-1 100	-9
11-99 persons	26 300	23 300	20 000	15 600	30 000	3 700	14
100 or more	11 200	8 200	5 200	4 600	14 800	3 600	32

**Appendix table 3. Job vacancies by employer sector of the local kind of activity unit 2011/I - 2012/I**

	Year/Quarter					Change	Change (%)
	2011/I	2011/II	2011/III	2011/IV	2012/I	2011/I - 2012/I	2011/I - 2012/I
Employer							
Employers total	59 000	49 800	40 000	33 500	72 600	13 600	23
Private enterprise	41 500	33 300	27 800	23 900	51 200	9 700	23
Local Government	12 200	11 200	8 200	6 000	13 900	1 800	14
Central Government	1 100	1 000	600	1 000	1 400	300	26
Non-Profit Organization	2 500	3 100	2 600	2 200	1 200	-1 300	-52
Other	1 800	1 200	700	400	4 900	3 100	174

**Appendix table 4. Job vacancies by major region (2012) 2011/I - 2012/I**

	Year/Quarter					Change	Change (%)
	2011/I	2011/II	2011/III	2011/IV	2012/I	2011/I - 2012/I	2011/I - 2012/I
Major region							
Total	59 000	49 800	40 000	33 500	72 600	13 600	23
Helsinki-Uusimaa	20 600	16 300	13 600	13 700	24 200	3 700	18
Southern Finland	11 300	11 800	6 900	4 800	14 600	3 300	29
Western Finland	15 400	9 900	9 900	7 200	17 800	2 400	15
Northern and Eastern Finland	11 700	11 700	9 600	7 900	16 000	4 200	36

**Appendix table 5. Job vacancies by industry (TOL 2008) 2011/I - 2012/I**

	Year/Quarter					Change	Change (%)
	2011/I	2011/II	2011/III	2011/IV	2012/I	2011/I - 2012/I	2011/I - 2012/I
Industry (TOL 2008)							
Total	59 000	49 800	40 000	33 500	72 600	13 600	23
A Agriculture, forestry and fishing (01–03)	1 300	700	300	500	1 200	-100	-7
B-E Manufacturing; Mining and quarrying and other industry (05–39)	7 100	4 400	4 900	4 200	10 900	3 700	52
F Construction (41–43)	2 600	3 600	1 800	1 700	3 300	700	25
G-I Wholesale and retail trade; Transportation and storage; Accommodation and food service (45–56)	18 900	12 600	9 900	7 400	21 600	2 700	14
J Information and communication (58–63)	3 400	1 900	1 600	1 900	3 500	100	3
K,L Financial and insurance activities; Real estate activities (64–68)	1 100	1 000	800	2 200	2 300	1 300	119
M,N Professional, scientific and technical activities; Administrative and support service activities (69–82)	8 800	9 200	6 900	4 900	8 600	-200	-3
O-Q Public administration; Education, Human health and social work activities (84–88)	11 400	14 700	11 600	8 400	14 600	3 100	27
R-S Other service activities (90–96)	4 400	1 800	2 200	2 300	6 600	2 300	52

**Appendix table 6. Part-time vacancies by major region (2012) 2011/I - 2012/I**

	Year/Quarter					Change	Change (%)
	2011/I	2011/II	2011/III	2011/IV	2012/I	2011/I - 2012/I	2011/I - 2012/I
Major region							
Total	12 800	9 600	8 500	5 000	12 200	-600	-5
Helsinki-Uusimaa	4 800	1 900	3 600	2 100	2 700	-2 100	-43
Southern Finland	1 200	2 900	900	300	3 400	2 200	186
Western Finland	3 600	2 400	2 500	700	3 400	-200	-5
Northern and Eastern Finland	3 200	2 400	1 500	2 000	2 600	-600	-19

**Appendix table 7. Fixed-term vacancies by major region (2012) 2011/I - 2012/I**

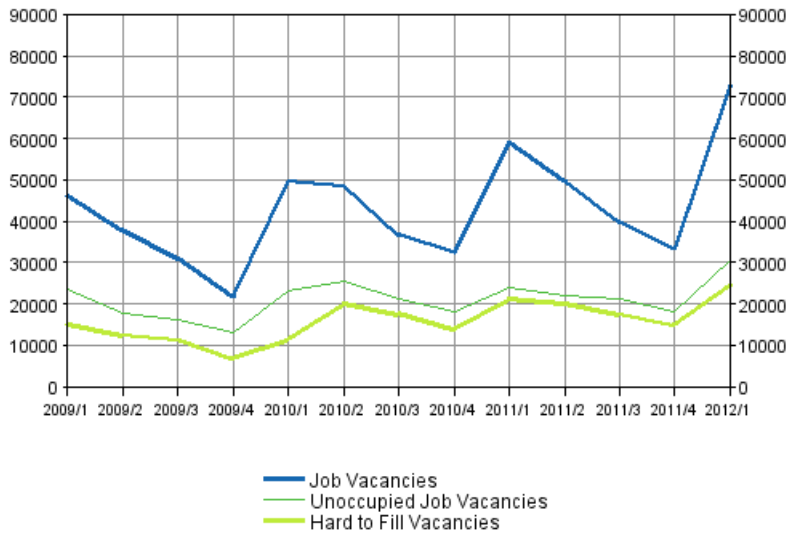
	Year/Quarter					Change	Change (%)
	2011/I	2011/II	2011/III	2011/IV	2012/I	2011/I - 2012/I	2011/I - 2012/I
Major region							
Total	31 400	23 200	14 200	11 100	35 900	4 500	14
Helsinki-Uusimaa	8 900	6 100	4 100	2 900	9 700	700	8
Southern Finland	6 600	5 400	1 700	1 100	6 400	-200	-4
Western Finland	8 400	5 100	3 500	3 600	10 500	2 100	24
Northern and Eastern Finland	7 300	6 500	4 900	3 500	9 300	1 900	26

**Appendix table 8. Hard-to-fill vacancies by major region (2012) 2011/I - 2012/I**

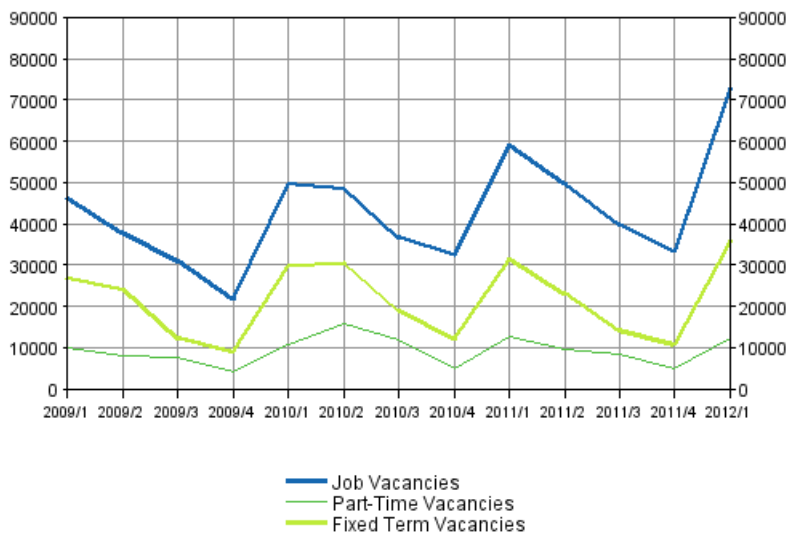
	Year/Quarter					Change	Change (%)
	2011/I	2011/II	2011/III	2011/IV	2012/I	2011/I - 2012/I	2011/I - 2012/I
Major region							
Total	21 100	20 000	17 500	15 100	24 500	3 400	16
Helsinki-Uusimaa	8 200	6 400	6 700	5 800	9 600	1 400	17
Southern Finland	4 000	4 700	2 700	2 900	4 400	400	10
Western Finland	5 200	4 100	3 800	3 200	5 600	400	8
Northern and Eastern Finland	3 700	4 700	4 300	3 400	4 900	1 200	31

# Appendix figures

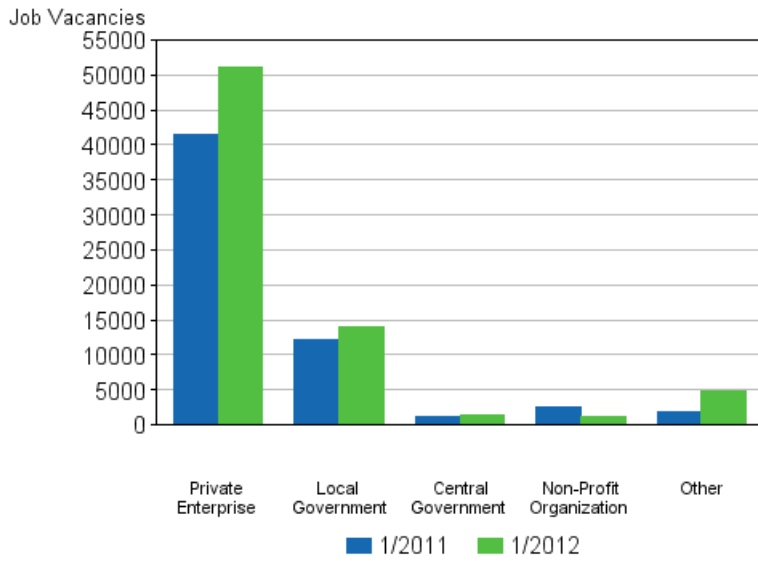
**Appendix figure 1. Job vacancies by the quarters**



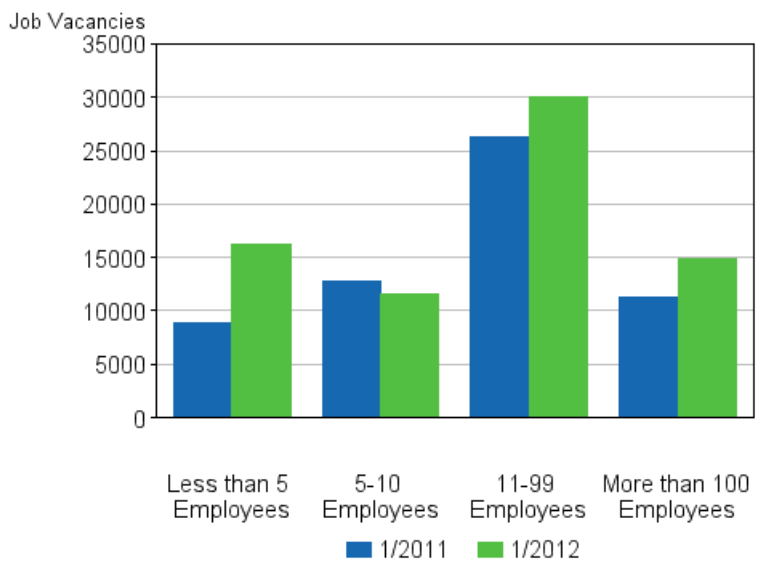
**Appendix figure 2. Job vacancies by type of employment relationship**



**Appendix figure 3. Job vacancies by employer sector**

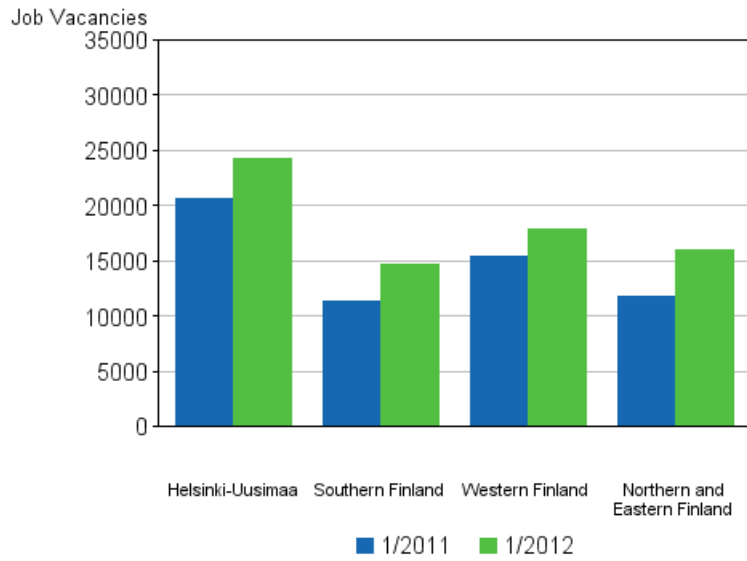


**Appendix figure 4. Job vacancies by size of the local kind of activity unit**

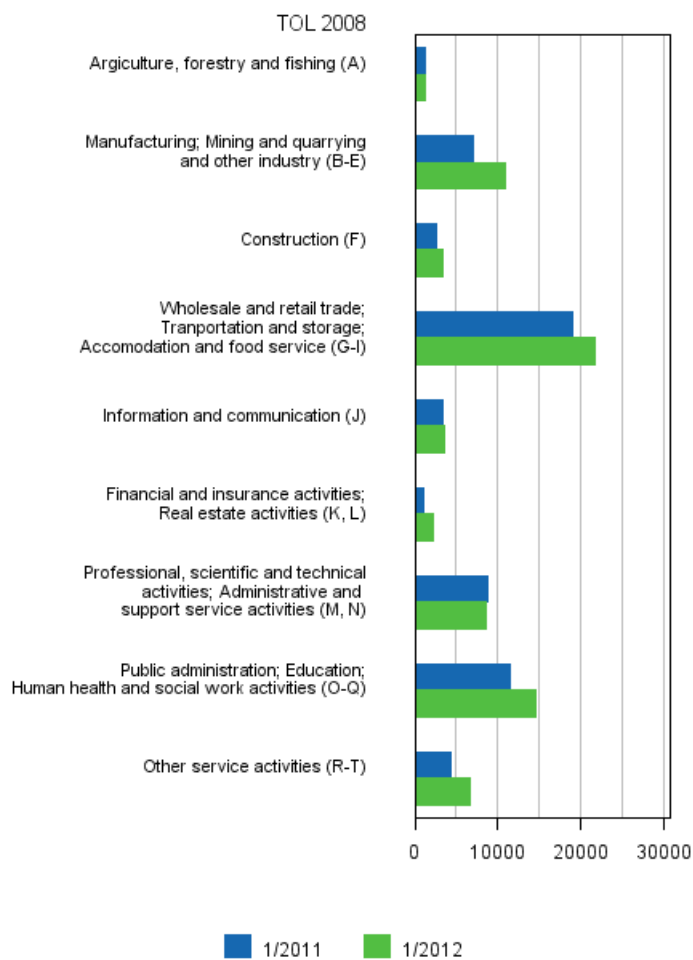




**Appendix figure 5. Job vacancies by major region (2012)**



**Appendix figure 6. Job vacancies by industry (TOL 2008)**



### Inquiries

Antti Halmetoja (09) 1734 3763

Director in charge:

Riitta Harala

[tyovoimatutkimus@stat.fi](mailto:tyovoimatutkimus@stat.fi)

[www.stat.fi](http://www.stat.fi)

Source: Job vacancy survey 2012, 1st quarter 2010. Statistics Finland.