

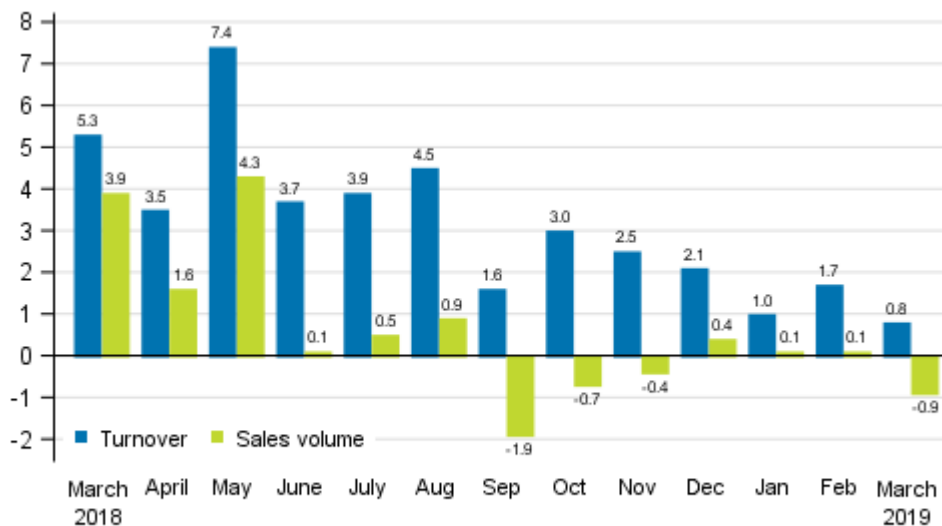
Turnover of trade

2019, March

Turnover of trade grew by 0.8 per cent in March

According to Statistics Finland, the working day adjusted turnover of total trade grew by 0.8 per cent in March compared to March 2018. The development of turnover was weakened by the contraction in motor vehicle trade, whereas turnover in other trade industries increased from one year ago. The working day adjusted sales volume of total trade, from which the impact of price changes has been eliminated, decreased by 0.9 per cent in March. The weaker development of sales volume than turnover particularly in wholesale trade and daily consumer goods trade is due to a rise in prices.

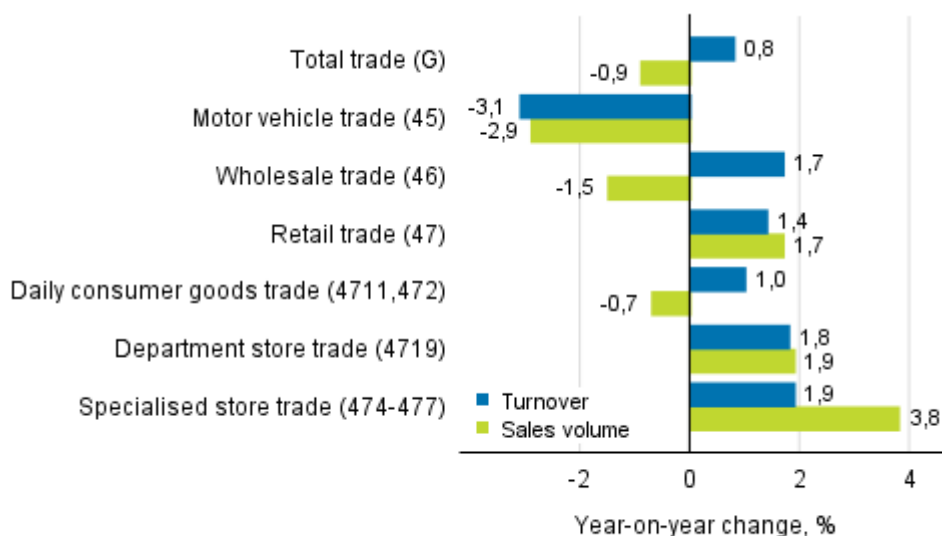
Annual change in working day adjusted turnover and sales volume in total trade (G), %



Source: Statistics Finland

The working day adjusted turnover and sales volume of motor vehicle trade both decreased by some three per cent from one year ago. In wholesale trade, the working day adjusted turnover grew by 1.7 per cent, whereas the sales volume of the industry decreased by nearly the same amount. The working day adjusted turnover of retail trade grew in March by 1.4 per cent and the sales volume, in turn, by 1.7 per cent. Among retail trade industries, turnover grew in daily consumer goods, department store and specialised store trade.

Annual change in working day adjusted turnover and sales volume in industries of trade, March 2019, % (TOL 2008)

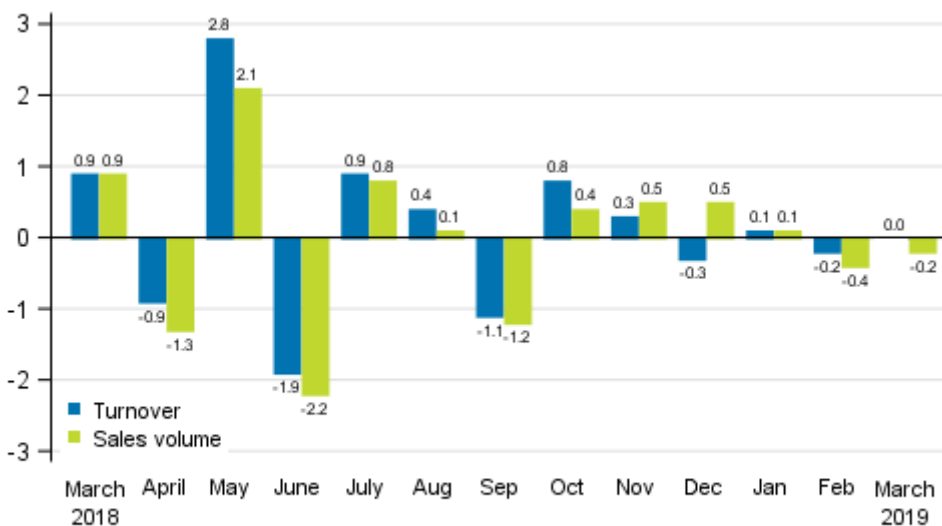


Source: Statistics Finland

Turnover remained on the same level with the previous month

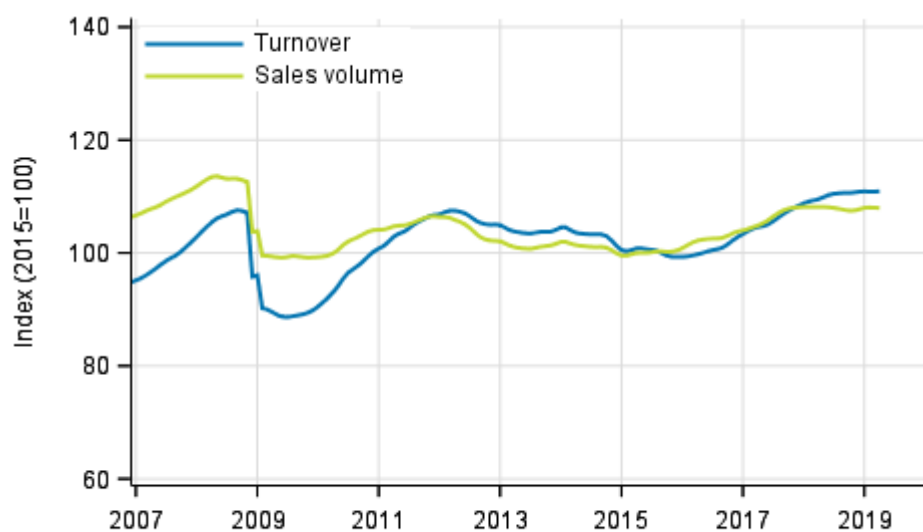
The seasonally adjusted turnover of total trade remained in March on the same level as in February. The sales volume went down slightly by 0.2 per cent over the same period. In February, turnover decreased by 0.2 per cent and sales volume, in turn, by 0.4 per cent compared to the previous month.

Change in seasonally adjusted turnover and sales volume in total trade (G) from the previous month, %



Source: Statistics Finland

Trend of turnover and sales volume in total trade



Source: Statistics Finland

The calculation of indices of turnover of trade is based on the Tax Administration's data on self-assessed taxes, which are supplemented with Statistics Finland's sales inquiry. The volume index of sales is calculated by removing the effect of price changes from the value index series.

The factors caused by the variation in the number of weekdays are taken into account in adjustment for working days. This means taking into consideration the lengths of months, different weekdays and holidays. In addition, seasonal variation is eliminated from seasonally adjusted series, on account of which it makes sense to compare observations of two successive months as well.

The data for the latest month are preliminary and they may become significantly revised particularly on more detailed industry levels in coming months.

Contents

Tables

Appendix tables

Appendix table 1. Annual change of working day adjusted turnover and sales volume in industries of trade, % (TOL 2008).....5

Revisions in these statistics.....6

Appendix tables

Appendix table 1. Annual change of working day adjusted turnover and sales volume in industries of trade, % (TOL 2008)

| | | Year-on-year change by three-month period, % ¹⁾ | | | | Year-on-year change in the latest month, % ¹⁾ |
|---|--------------|--|------------|------------|------------|--|
| | | 04-06/2018 | 07-09/2018 | 10-12/2018 | 01-03/2019 | 03/2019 |
| G Total trade | Turnover | 4.9 | 3.3 | 2.5 | 1.1 | 0.8 |
| | Sales volume | 2.0 | -0.1 | -0.2 | -0.3 | -0.9 |
| 45 Motor vehicle trade | Turnover | 6.7 | 2.6 | -0.4 | -1.2 | -3.1 |
| | Sales volume | 6.3 | 2.6 | 0.2 | -0.7 | -2.9 |
| 46 Wholesale trade | Turnover | 5.6 | 4.2 | 3.2 | 1.6 | 1.7 |
| | Sales volume | 1.1 | -1.5 | -1.5 | -1.0 | -1.5 |
| 47 Retail trade | Turnover | 2.9 | 2.3 | 2.5 | 1.5 | 1.4 |
| | Sales volume | 1.9 | 1.1 | 1.8 | 1.5 | 1.7 |
| Daily consumer goods trade (4711, 472) ²⁾ | Turnover | 3.8 | 3.8 | 3.1 | 1.1 | 1.0 |
| | Sales volume | 0.5 | 0.4 | -0.1 | -0.9 | -0.7 |
| Department store trade (4719) ³⁾ | Turnover | 1.2 | 1.1 | 0.7 | 1.4 | 1.8 |
| | Sales volume | 0.3 | 0.0 | -0.1 | 1.1 | 1.9 |
| Specialised store trade (474-477) | Turnover | 1.6 | 0.3 | 1.7 | 2.0 | 1.9 |
| | Sales volume | 3.1 | 1.9 | 3.3 | 3.6 | 3.8 |

1) Year-on-year change compares the value for an examined time period to the value for the corresponding time period twelve months back.

2) According to the Structural business and financial statement statistics, the share of daily consumer goods (4711, 472) of turnover in retail trade was 49.8 per cent in 2016.

3) According to the Structural business and financial statement statistics, the share of retail sale in department stores (4719) of turnover in retail trade was 10.9 per cent in 2016.

Revisions in these statistics

The data of the statistics have become revised according to the table below. For more information about data revisions, see Section 3 of the quality description (only in Finnish).

Revision of annual changes in working day adjusted turnover in industries of trade¹⁾

| Industry / Reference period | | Year-on-year change, % | | Revision, percentage point |
|--|---------|------------------------|-----------------------------|----------------------------|
| | | 1st release | Latest release (2019-05-14) | |
| G Total trade | 10/2018 | 1.4 | 3.0 | 1.6 |
| | 11/2018 | 2.3 | 2.5 | 0.2 |
| | 12/2018 | 1.6 | 2.1 | 0.5 |
| | 01/2019 | 0.6 | 1.0 | 0.4 |
| | 02/2019 | 1.7 | 1.7 | 0.0 |
| 45 Motor vehicle trade | 10/2018 | -0.2 | 1.4 | 1.6 |
| | 11/2018 | -3.7 | -2.6 | 1.1 |
| | 12/2018 | 1.5 | 0.1 | -1.4 |
| | 01/2019 | -4.4 | -3.3 | 1.1 |
| | 02/2019 | 2.6 | 3.3 | 0.7 |
| 46 Wholesale trade | 10/2018 | 2.1 | 4.0 | 1.9 |
| | 11/2018 | 3.8 | 3.9 | 0.1 |
| | 12/2018 | 0.7 | 1.9 | 1.2 |
| | 01/2019 | 1.9 | 2.2 | 0.3 |
| | 02/2019 | 1.4 | 0.9 | -0.5 |
| 47 Retail trade | 10/2018 | 1.4 | 1.7 | 0.3 |
| | 11/2018 | 2.5 | 2.4 | -0.1 |
| | 12/2018 | 3.0 | 3.2 | 0.2 |
| | 01/2019 | 0.4 | 0.8 | 0.4 |
| | 02/2019 | 1.8 | 2.4 | 0.6 |
| Daily consumer goods trade (4711, 472) | 10/2018 | 1.9 | 2.5 | 0.6 |
| | 11/2018 | 2.7 | 2.6 | -0.1 |
| | 12/2018 | 4.0 | 4.0 | 0.0 |
| | 01/2019 | -0.3 | 0.1 | 0.4 |
| | 02/2019 | 1.7 | 2.3 | 0.6 |
| Department store trade (4719) | 10/2018 | -1.3 | -1.4 | -0.1 |
| | 11/2018 | 1.2 | 0.7 | -0.5 |
| | 12/2018 | 2.2 | 2.2 | 0.0 |
| | 01/2019 | 0.6 | 0.3 | -0.3 |
| | 02/2019 | 2.5 | 2.3 | -0.2 |

1) The 1st release refers to the time when data for the reference period were released for the first time. The revision describes the difference of annual change percentages between the first and latest release.

Revision of long-term annual changes in turnover in industries of trade

| Industry / Year | Average ¹⁾ | Average for absolute values ²⁾ | |
|------------------------|-----------------------|---|-----|
| G Total trade | 2015 | 0.6 | 0.7 |
| | 2016 | 0.3 | 0.7 |
| | 2017 | 0.0 | 0.6 |
| 45 Motor vehicle trade | 2015 | 0.3 | 0.9 |
| | 2016 | 0.3 | 0.8 |
| | 2017 | 0.1 | 0.7 |

| Industry / Year | | Average ¹⁾ | Average for absolute values ²⁾ |
|--|------|-----------------------|---|
| 46 Wholesale trade | 2015 | 0.9 | 1.1 |
| | 2016 | 0.8 | 1.1 |
| | 2017 | 0.0 | 0.9 |
| 47 Retail trade | 2015 | 0.1 | 0.5 |
| | 2016 | -0.2 | 0.7 |
| | 2017 | -0.2 | 0.6 |
| Daily consumer goods trade (4711, 472) | 2015 | -0.2 | 0.4 |
| | 2016 | -0.3 | 0.5 |
| | 2017 | -0.1 | 0.5 |
| Department store trade (4719) | 2015 | -0.3 | 0.4 |
| | 2016 | -0.4 | 0.4 |
| | 2017 | 0.1 | 0.9 |

1) In 2015, the average was calculated from data revised between the first and seventh release months in the statistical reference year. The average for 2016 and 2017 was calculated upon completion of the data for the first and last release months in the statistical reference year, when the official structural business and financial statement statistics are also published. The data were calculated from annual changes in the original index series.

2) In 2015, the average was calculated from the absolute values of differences between the first and seventh release months. The average for 2016 and 2017 was calculated from the absolute values of differences between the first and last release months in the statistical reference year, when the official structural business and financial statement statistics are also published. The data were calculated from annual changes in the original index series.

Inquiries

Suvi Kiema 029 551 3509

Seija Karttunen 029 551 2741

Director in charge:

Mari Ylä-Jarkko

palvelut.suhdanne@stat.fi

www.stat.fi

Source: Turnover of trade, Statistics Finland