

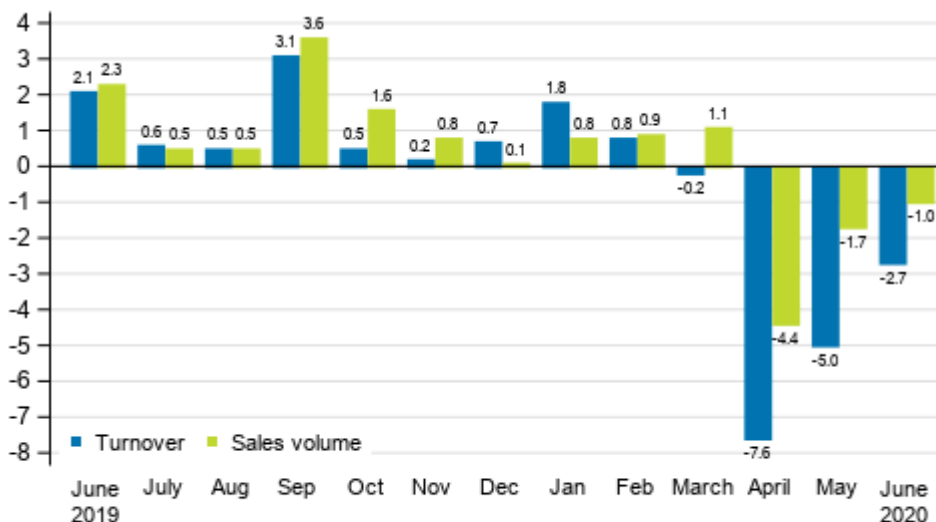
# Turnover of trade

2020, June

## Turnover and sales volume in trade fell in June from one year back but grew from the month before

According to Statistics Finland, turnover in total trade adjusted for working days fell in June by 2.7 per cent from June 2019. Over the same period, the working day adjusted volume of sales, from which the impact of prices has been eliminated, decreased by one per cent. The development in both turnover and sales volume was boosted in June by the positive development in all retail trade industries. Turnover and sales volume in wholesale trade and motor vehicle trade were still falling in June. The exceptional situation caused by coronavirus had an effect on the development of trade industries.

### Annual change in working day adjusted turnover and sales volume in total trade (G), %

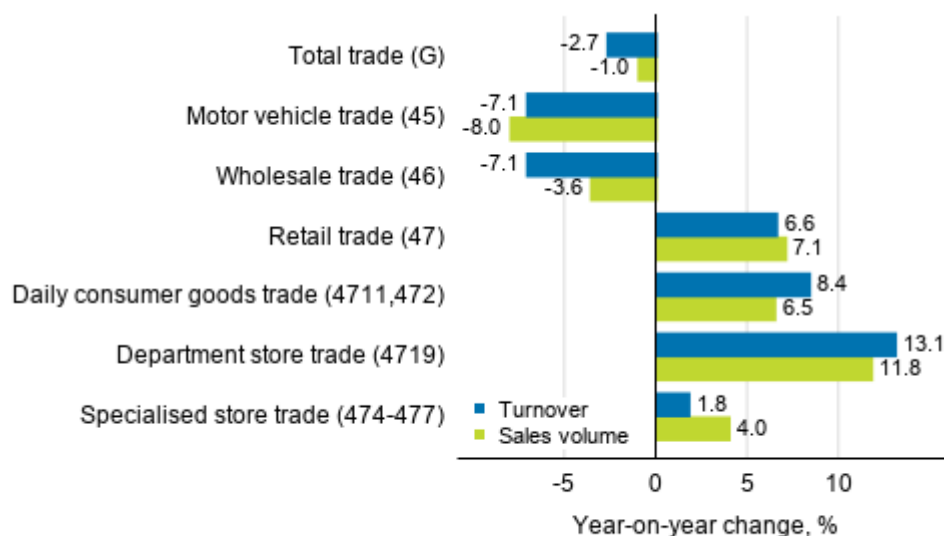


Source: Statistics Finland

In June 2020, turnover in wholesale trade adjusted for working days fell by 7.1 per cent from June of the previous year, while at the same time, sales volume declined by 3.6 per cent. Adjusted for working days, turnover in motor vehicle trade also fell by 7.1 per cent and sales volume declined by slightly more than

in June 2019, by 8.0 per cent. In retail trade, working day adjusted turnover grew in June by 6.6 per cent and sales volume by 7.1 per cent. In addition to growth in daily consumer goods trade, the positive development of retail trade was accelerated by the picking up of department store and specialised store trade. In daily consumer goods trade, working day adjusted turnover grew in June by 8.4 per cent and sales volume by 6.5 per cent. Growth in working day adjusted turnover in department store trade strengthened in June, being as much as 13.1 per cent and sales volume 11.8 per cent. Specialised store trade made an upturn in June as working day adjusted turnover grew by 1.8 per cent year-on-year. Sales volume in specialised store trade increased at same time by 4.0 per cent from June 2019.

**Annual change in working day adjusted turnover and sales volume in industries of trade, June 2020, % (TOL 2008)**

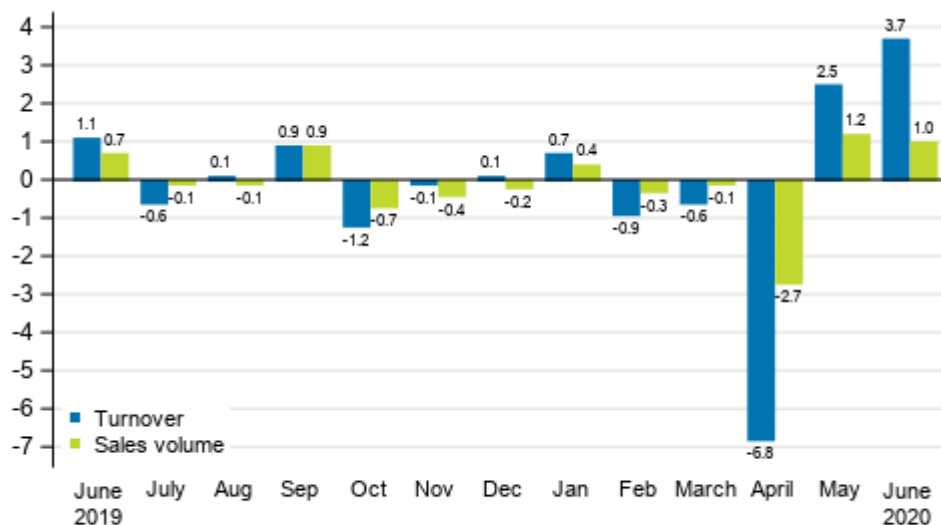


Source: Statistics Finland

**Turnover and sales volume grew further month-on-month**

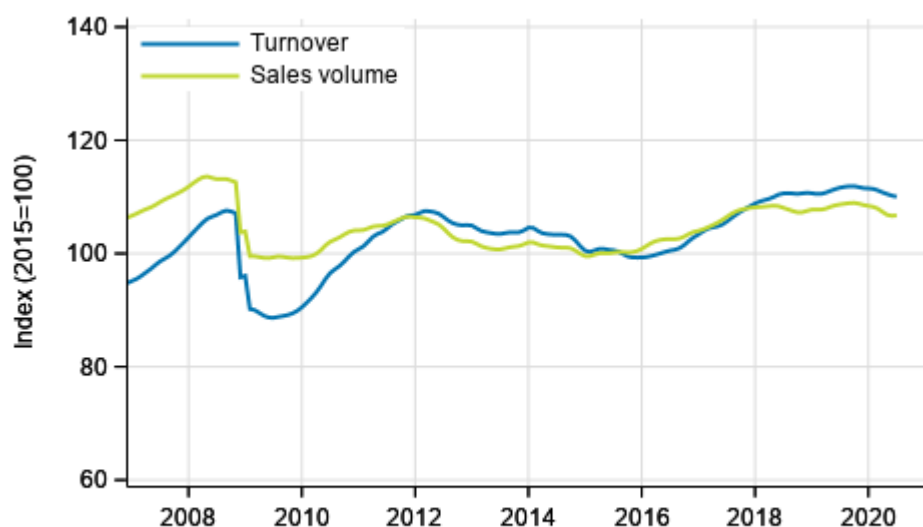
Seasonally adjusted turnover in total trade grew by 3.7 per cent in June compared to May. Sales volume grew by one per cent over the same period. In May, turnover rose by 2.5 per cent and sales volume by 1.2 per cent from the month before.

**Change in seasonally adjusted turnover and sales volume in total trade (G) from the previous month, %**



Source: Statistics Finland

**Trend of turnover and sales volume in total trade**



Source: Statistics Finland

The calculation of indices of turnover of trade is based on the Tax Administration’s data on self-assessed taxes, which are supplemented with Statistics Finland’s sales inquiry. The volume index of sales is calculated by removing the effect of price changes from the value index series.

The factors caused by the variation in the number of weekdays are taken into account in adjustment for working days. This means taking into consideration the lengths of months, different weekdays and holidays. In addition, seasonal variation is eliminated from seasonally adjusted series, on account of which it makes sense to compare observations of two successive months as well.

The data for the latest month are preliminary and they may become significantly revised particularly on more detailed industry levels in coming months.

# Contents

## Tables

### Appendix tables

Appendix table 1. Annual change of working day adjusted turnover and sales volume in industries of trade, % (TOL 2008).....5

Revisions in these statistics.....6

# Appendix tables

**Appendix table 1. Annual change of working day adjusted turnover and sales volume in industries of trade, % (TOL 2008)**

		Year-on-year change by three-month period, % <sup>1)</sup>				Cumulative year-on-year change, % <sup>1)</sup>	Year-on-year change in the latest month, % <sup>1)</sup>
		07-09/2019	10-12/2019	01-03/2020	04-06/2020		
G Total trade	Turnover	1.4	0.4	0.8	-5.0	-2.3	-2.7
	Sales volume	1.5	0.8	0.9	-2.3	-0.8	-1.0
45 Motor vehicle trade	Turnover	4.5	6.6	2.5	-14.2	-6.2	-7.1
	Sales volume	4.5	5.8	1.7	-15.0	-7.0	-8.0
46 Wholesale trade	Turnover	-0.6	-1.6	-0.6	-8.2	-4.6	-7.1
	Sales volume	-0.4	-0.7	0.5	-3.4	-1.5	-3.6
47 Retail trade	Turnover	3.3	1.5	2.9	4.5	3.8	6.6
	Sales volume	3.4	1.6	2.3	4.8	3.7	7.1
Daily consumer goods trade (4711, 472) <sup>2)</sup>	Turnover	1.8	2.3	5.3	9.1	7.3	8.4
	Sales volume	0.0	0.5	3.2	7.3	5.4	6.5
Department store trade (4719) <sup>3)</sup>	Turnover	5.6	1.9	-2.5	6.2	2.2	13.1
	Sales volume	4.8	0.9	-3.7	5.2	1.1	11.8
Specialised store trade (474-477) <sup>4)</sup>	Turnover	4.7	0.9	3.4	-1.5	0.7	1.8
	Sales volume	6.5	2.3	4.7	0.5	2.4	4.0

1) Year-on-year change compares the value for an examined time period to the value for the corresponding time period twelve months back.

2) According to the Structural business and financial statement statistics, the share of daily consumer goods (4711, 472) of turnover in retail trade was 50.9 per cent in 2018.

3) According to the Structural business and financial statement statistics, the share of retail sale in department stores (4719) of turnover in retail trade was 9.6 per cent in 2018.

4) According to the Structural business and financial statement statistics, the share of retail sale in specialised stores (474-477) of turnover in retail trade was 35.2 per cent in 2018.

## Revisions in these statistics

The data of the statistics have become revised according to the table below. For more information about data revisions, see Section 3 of the quality description (only in Finnish).

### Revision of annual changes in working day adjusted turnover in industries of trade<sup>1)</sup>

Industry / Reference period		Year-on-year change, %		Revision, percentage point
		1st release	Latest release (2020-08-13)	
G Total trade	01/2020	2.1	1.8	-0.3
	02/2020	1.2	0.8	-0.4
	03/2020	-2.1	-0.2	1.9
	04/2020	-6.2	-7.6	-1.4
	05/2020	-5.0	-5.0	0.0
45 Motor vehicle trade	01/2020	4.3	3.8	-0.5
	02/2020	8.2	7.5	-0.7
	03/2020	-4.6	-3.2	1.4
	04/2020	-22.3	-20.9	1.4
	05/2020	-16.5	-14.5	2.0
46 Wholesale trade	01/2020	0.7	0.7	0.0
	02/2020	-1.3	-1.9	-0.6
	03/2020	-2.4	-0.7	1.7
	04/2020	-5.1	-8.2	-3.1
	05/2020	-8.6	-9.3	-0.7
47 Retail trade	01/2020	3.6	2.9	-0.7
	02/2020	3.5	4.0	0.5
	03/2020	-0.2	1.9	2.1
	04/2020	-1.3	-0.2	1.1
	05/2020	6.0	6.8	0.8
Daily consumer goods trade (4711, 472)	01/2020	3.8	4.4	0.6
	02/2020	2.6	3.5	0.9
	03/2020	6.4	7.7	1.3
	04/2020	6.2	6.5	0.3
	05/2020	11.5	12.3	0.8
Department store trade (4719)	01/2020	-0.3	-0.7	-0.4
	02/2020	5.2	6.7	1.5
	03/2020	-12.0	-11.8	0.2
	04/2020	-5.2	-3.8	1.4
	05/2020	6.0	8.5	2.5
Specialised store trade (474-477)	01/2020	5.7	3.0	-2.7
	02/2020	5.9	8.5	2.6
	03/2020	-6.3	-0.7	5.6
	04/2020	-9.2	-7.5	1.7
	05/2020	-3.6	0.6	4.2

1) The 1st release refers to the time when data for the reference period were released for the first time. The revision describes the difference of annual change percentages between the first and latest release.

## Revision of long-term annual changes in working day adjusted turnover in industries of trade

Industry / Year		Average <sup>1)</sup>	Average for absolute values <sup>2)</sup>
G Total trade	2016	0.3	0.7
	2017	0.0	0.6
	2018	0.2	0.6
45 Motor vehicle trade	2016	0.3	0.8
	2017	0.1	0.6
	2018	0.6	1.1
46 Wholesale trade	2016	0.7	1.0
	2017	0.0	0.8
	2018	0.3	0.8
47 Retail trade	2016	-0.2	0.7
	2017	-0.2	0.6
	2018	-0.1	0.5
Daily consumer goods trade (4711, 472)	2016	-0.3	0.5
	2017	-0.2	0.5
	2018	0.3	0.4
Department store trade (4719)	2016	-0.4	0.4
	2017	0.1	0.9
	2018	-0.3	0.3

1) The average have been calculated upon completion of the data for the first and last release months in the statistical reference year, when the official structural business and financial statement statistics are also published.

2) The average have been calculated from the absolute values of differences between the first and last release months in the statistical reference year, when the official structural business and financial statement statistics are also published.

## Inquiries

Reetta-Maria Salokannel 029 551 3657

Director in charge:

Mari Ylä-Jarkko

[palvelut.suhdanne@stat.fi](mailto:palvelut.suhdanne@stat.fi)

[www.stat.fi](http://www.stat.fi)

Source: Turnover of trade, Statistics Finland