

# Trend Indicator of Output

2016, April

## Output of the national economy declined in April

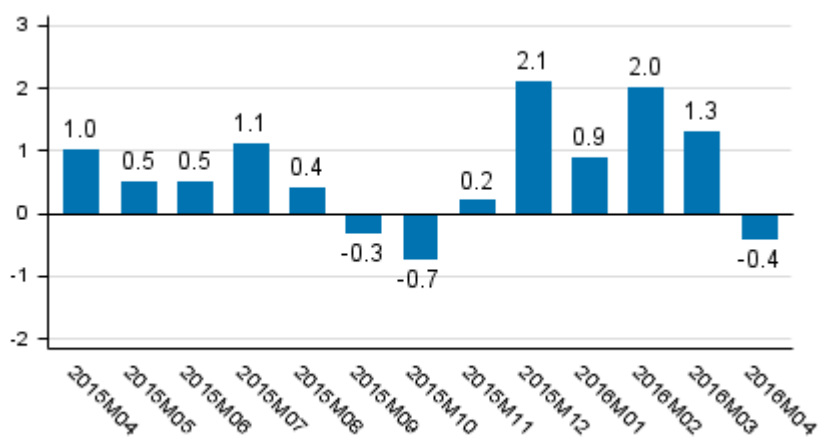
Seasonally adjusted output fell by 1.0 per cent in April from the month before. Adjusted for working days, output was 0.4 per cent lower than one year before. According to revised data, working-day adjusted output grew in March by 1.3 per cent (previously +0.7 per cent) from March 2015.

### Volume of total output 2005 to 2016, trend and seasonally adjusted series



The series of the Trend Indicator of Output are seasonally adjusted with the Tramo/Seats method. The latest observations of the series adjusted for seasonal and random variation (seasonally adjusted and trend series) become revised with new observations in seasonal adjustment methods. Revisions especially at turning points of economic trends may be significant, which should be taken into consideration when using seasonally adjusted and trend data.

**Working day adjusted change of total output from previous year's corresponding month, %**



Working day adjusted primary production remained on level with the previous year. Secondary production increased by nearly one per cent and services declined by close on one per cent from April 2015.

Primary production refers to agriculture, hunting, forestry and fishing. Secondary production includes manufacturing and construction. Services comprise trade, hotel and restaurant activities, transport and business activities, as well as real estate, renting and research services, financial intermediation and insurance, and public services.

# Contents

Revisions in these statistics.....4

# Revisions in these statistics

## Revision of annual volume change, %

		2015M08	2015M09	2015M10	2015M11	2015M12	2016M01	2016M02	2016M03
Seasonally adjusted month-on-month change, %	1. release	-2,7	-0,7	-0,3	-0,4	-0,2	0,2	-0,3	-0,4
	Previous release	-0,4	-0,1	-0,3	0,2	0,7	0,1	0,5	-0,4
	Latest release	-0,3	-0,2	-0,2	0,2	0,6	0,1	0,5	-0,1
	Revision, %-points (latest minus first)	2,4	0,5	0,1	0,6	0,8	-0,1	0,8	0,3
Working day adjusted year-on-year change, %	1. release	-2,1	-2,6	-1,8	-0,5	0,6	1,0	0,6	0,7
	Previous release	0,3	-0,2	-0,7	0,2	2,2	0,9	1,9	0,7
	Latest release	0,4	-0,3	-0,7	0,2	2,1	0,9	2,0	1,3
	Revision, %-points (latest minus first)	2,5	2,3	1,1	0,7	1,5	-0,1	1,4	0,6

## Average revision starting from 2014M05, %-points

	Average revision (absolute values)	Average revision
Seasonally adjusted month-on-month change	0,5	0,5
Working day adjusted year-on-year change	1,1	0,5

## Inquiries

Ida Peltonen 029 551 3334

Veli-Pekka Karvinen 029 551 2667

Director in charge:

Ville Vertanen

[kansantalous.suhdanteet@tilastokeskus.fi](mailto:kansantalous.suhdanteet@tilastokeskus.fi)

[www.stat.fi](http://www.stat.fi)

Source: Trend Indicator of Output 2016 April, Statistics Finland