

Trend Indicator of Output

2021, October

Output of the national economy grew year-on-year, decreased month-on-month

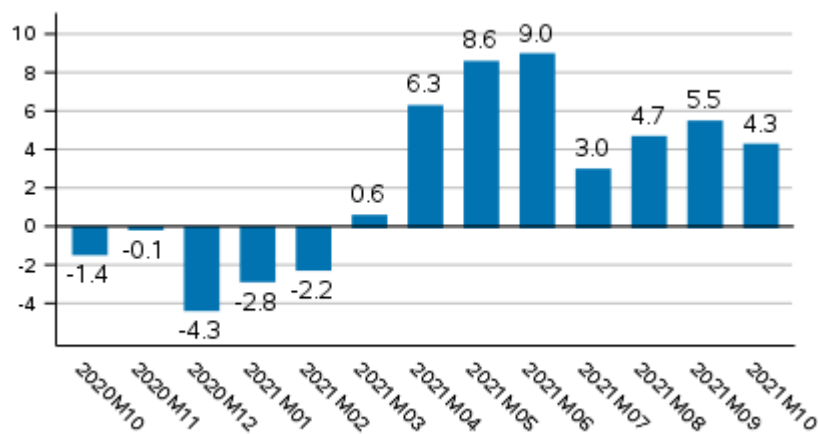
Adjusted for working days, output went up by 4.3 per cent in October 2021 from one year back. In October, seasonally adjusted output fell by 0.2 per cent from the month before. According to revised data, working day adjusted output grew in September 2021 by 5.5 per cent (previously 5.0 per cent) from the previous year's September.

Volume of total output 2005 to 2021, trend and seasonally adjusted series



The series of the Trend Indicator of Output are seasonally adjusted with the Tramo/Seats method. The latest observations of the series adjusted for seasonal and random variation (seasonally adjusted and trend series) become revised with new observations in seasonal adjustment methods. Revisions especially at turning points of economic trends may be significant, which should be taken into consideration when using seasonally adjusted and trend data.

Working day adjusted change of total output from previous year's corresponding month, %



Working day adjusted primary production grew by around five per cent. Secondary production grew by some four per cent and services by around four per cent from October 2020.

Primary production refers to agriculture, hunting, forestry and fishing. Secondary production includes manufacturing and construction. Services comprise trade, hotel and restaurant activities, transport and business activities, as well as real estate, renting and research services, financial intermediation and insurance, and public services.

Contents

Revisions in these statistics.....4

Revisions in these statistics

Revision of annual volume change, %

		2021M02	2021M03	2021M04	2021M05	2021M06	2021M07	2021M08	2021M09
Seasonally adjusted month-on-month change, %	1. release	0,3	-0,6	1,9	0,4	0,8	0,2	0,3	0,1
	Previous release	0,2	-0,3	1,7	0,6	1,1	-0,2	0,5	0,1
	Latest release	0,1	-0,6	2,0	0,6	1,0	-0,9	1,1	0,5
	Revision, %-points (latest minus first)	-0,2	0,0	0,1	0,2	0,2	-1,1	0,8	0,4
Working day adjusted year-on-year change, %	1. release	-0,6	1,1	6,4	9,0	9,7	5,5	4,6	5,0
	Previous release	-2,5	0,7	6,3	8,4	8,6	4,6	4,3	5,0
	Latest release	-2,2	0,6	6,3	8,6	9,0	3,0	4,7	5,5
	Revision, %-points (latest minus first)	-1,6	-0,5	-0,1	-0,4	-0,7	-2,5	0,1	0,5

Average revision starting from 2014M05, %-points

	Average revision (absolute values)	Average revision
Seasonally adjusted month-on-month change	0,8	0,3
Working day adjusted year-on-year change	1,4	0,2

Inquiries

Janne Eskelinen 029 551 2316
Eveliina Heinänen 029 551 3436
Head of Department in
charge:
Katri Kaaja

kansantalous.suhdanteet@tilastokeskus.fi
www.stat.fi

Source: Trend Indicator of Output 2021 October, Statistics Finland