

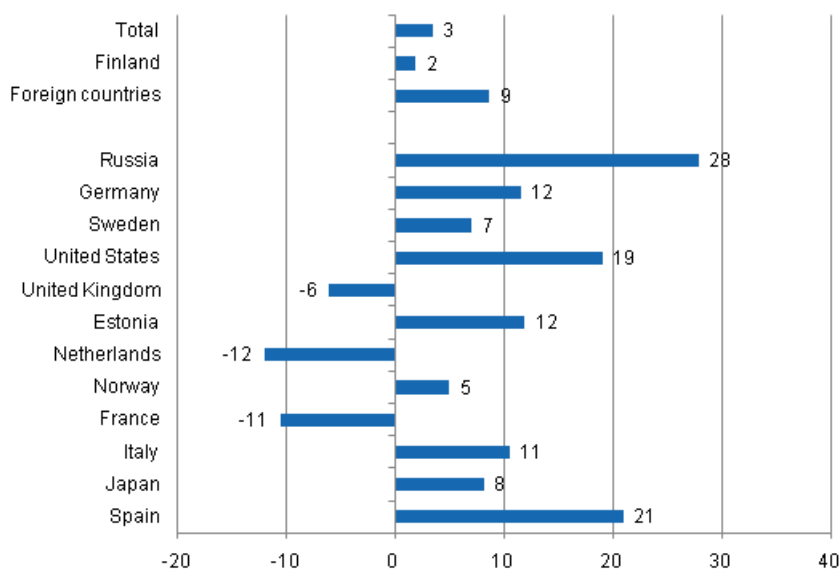
Accommodation statistics

2011, June

Nights spent by foreign tourists in Finland increased by 9 per cent in June

The number of recorded nights spent by foreign tourists at Finnish accommodation establishments in June 2011 was 516,000, which was nine per cent higher than in June 2010. The total number of overnight stays increased by good three per cent from last year and altogether two million overnight stays were recorded at accommodation establishments. The number of nights spent by resident tourists increased by two per cent and totalled 1.5 million in June 2011. These figures are preliminary data from Statistics Finland's statistics on accommodation establishments and they have been collected from accommodation establishments with at least 10 rooms, cottages, or caravan pitches with electricity connection, and youth hostels.

Change in overnight stays in June 2011/2010, %

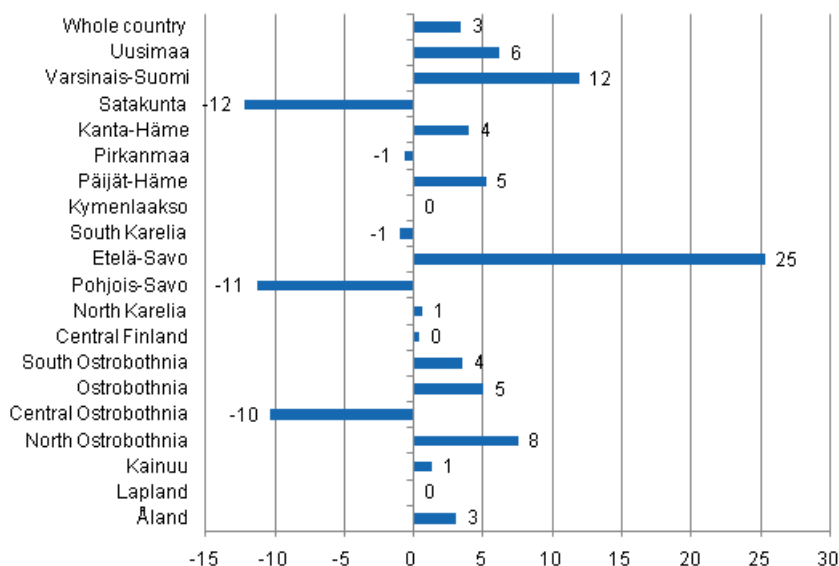


Russians were the largest group of foreign tourists in June with 78,000 overnight stays. The number of nights recorded for them at Finnish accommodation establishments was 28 per cent higher than one year earlier. Visitors from Germany came next with 73,000 nights spent, which was 12 per cent up on June

2010. The third largest group were Swedish tourists for whom accommodation establishments recorded 57,000 nights spent. The number was seven per cent higher than one year previously. Nights spent by visitors from almost all the most important countries of inbound tourism to Finland increased in June. Besides for Russian visitors, significant growths were also recorded in the nights spent by visitors from Spain; up by 21 per cent, and the U.S. for whom 19 per cent more overnight stays were recorded than in June 2010. By contrast, overnight stays by Dutch visitors at accommodation establishments decreased by 12 per cent, those by French tourists by 11 per cent and those by British visitors by six per cent from the year before.

By region, the total number of overnight stays increased most in the regions of Etelä-Savo, up by 25 per cent, and Varsinais-Suomi, up by 12 per cent. In North Ostrobothnia, recorded overnight stays went up by eight per cent and in Uusimaa by six per cent from the year before. Overnight stays in both Päijät-Häme and Ostrobothnia increased by five per cent. Overnight stays decreased most in Satakunta, by 12 per cent, and in Pohjois-Savo, by 11 per cent.

Change in overnight stays in June by region 2011 / 2010, %



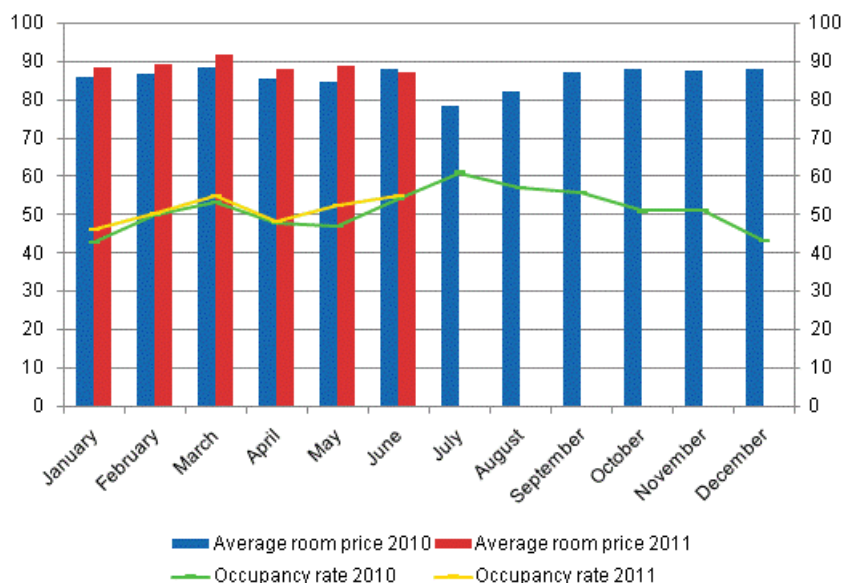
Overnight stays in hotels increased by nearly four per cent in February

The total number of nights spent in hotels rose to 1.4 million, which was nearly four per cent up on the year before. Compared with June 2010, the number of nights spent by foreign tourists increased by 7.5 per cent and that of nights spent by domestic tourists by two per cent.

The occupancy rate of hotel rooms was 55.0 per cent in June. One year earlier it was 54.3 per cent. Among the regions, the highest occupancy rates of hotel rooms were measured in Uusimaa, 71.2 per cent, and Varsinais-Suomi, 65.6 per cent. In Helsinki, the hotel room occupancy rate was 78.4 per cent and in Turku 69.9 per cent.

In June, the realised average price of a hotel room was EUR 87.35 per day for the whole country. Twelve months previously it was EUR 88.05.

Hotel room occupancy rate and the monthly average price



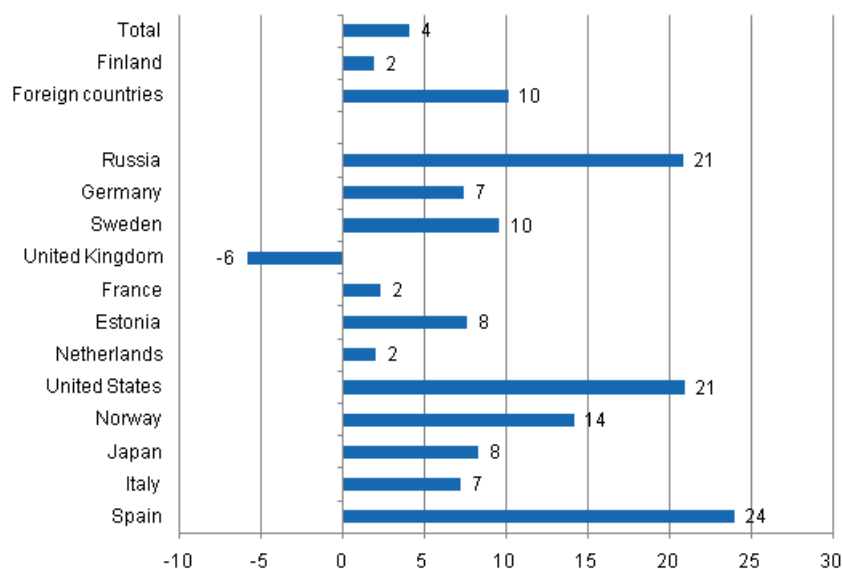
Total number of nights spent at all accommodation establishments went up by four per cent in the January to June 2011 period

From January to June, the number of nights spent at accommodation establishments in Finland totalled nine million, which was four per cent up on the respective time period of last year. Overnight stays by foreign tourists increased by ten per cent and accommodation establishments recorded a total of 2.5 million of them. Overnight stays by resident tourists numbered good 6.5 million, which was two per cent more than in the same time period last year.

Among the most important countries of inbound tourism to Finland, overnight stays by Spanish visitors increased most, or by 24 per cent, in the January to June period. Overnight stays of visitors from both the United States and Russia increased by 21 per cent from the respective time period of last year.

Accommodation establishments recorded 14 per cent more overnight stays for Norwegian visitors and ten per cent more overnight stays for visitors from Sweden. By contrast, overnight stays of visitors from the UK decreased by six per cent from the respective time period of last year.

Change in overnight stays in January-June 2011/2010, %



Contents

Tables

Appendix tables

Appendix table 1. Capacity and its utilization, June 2011.....	5
Appendix table 2. Nights spend in all establishments, June 2011.....	6
Appendix table 3. Hotel capacity and capacity utilization, June 2011.....	7
Appendix table 4. Nights spend in hotels, June 2011.....	8
Appendix table 5. Visitor arrivals and nights spend by country of residence, June 2011.....	9
Appendix table 6. Nights spend in all establishments, 2011.....	9

Appendix tables

Appendix table 1. Capacity and its utilization, June 2011

Region / municipality	Number of establishments	Number of bedrooms	Occupancy rate of bedrooms %	Change of the occupancy rate compared to previous year, %-units	Average price of nights spend, in euros (incl. VAT 9 %)
Whole country	1 280	63 986	50,3	0,5	44,49
Mainland Finland	1 205	62 353	50,3	0,5	44,56
Uusimaa	151	14 891	70,1	0,7	61,73
Helsinki	63	8 716	78,2	2,2	66,27
Varsinais-Suomi	84	4 163	59,7	6,6	44,90
Turku	25	2 284	68,9	6,4	49,34
Satakunta	41	1 622	48,2	1,9	38,62
Pori	11	706	54,8	4,8	34,99
Kanta-Häme	31	1 538	43,9	-4,0	39,98
Hämeenlinna	14	884	42,0	-6,9	44,62
Pirkanmaa	78	4 324	55,6	0,9	42,22
Tampere	26	2 517	64,0	1,3	50,18
Päijät-Häme	35	2 088	44,8	2,8	41,59
Lahti	12	803	50,3	2,6	52,93
Kymenlaakso	26	1 196	47,2	-2,3	42,40
Kouvola	11	584	48,9	-4,0	34,53
South Karelia	37	1 714	50,9	0,8	43,94
Lappeenranta	10	674	60,8	-5,0	44,67
Etelä-Savo	81	3 044	41,3	4,1	34,58
Mikkeli	10	707	53,7	8,7	51,92
Pohjois-Savo	55	2 741	47,1	-2,5	38,64
Kuopio	17	1 185	58,1	-1,8	41,22
North Karelia	60	2 036	36,5	-1,7	36,60
Joensuu	15	867	44,8	-0,3	47,25
Central Finland	71	3 630	45,7	-0,2	36,97
Jyväskylä	16	1 523	57,1	-0,7	50,15
South Ostrobothnia	49	2 025	47,5	-2,3	36,65
Seinäjoki	10	561	63,2	-2,4	54,81
Ostrobothnia	39	1 651	46,3	4,4	41,13
Vaasa	11	925	54,7	5,6	46,40
Central Ostrobothnia	25	687	39,0	-4,2	37,32
Kokkola	13	469	46,6	-2,5	42,07
North Ostrobothnia	105	4 899	40,1	2,3	28,24
Oulu	12	1 667	60,7	4,3	49,24
Kainuu	52	2 282	40,7	-1,6	29,80
Kajaani	9	500	28,5	-6,2	44,47
Lapland	185	7 822	29,6	-2,2	30,02
Rovaniemi	20	1 397	48,4	-5,3	30,90
Åland	75	1 633	48,4	2,2	.
Maarianhamina	15	678	68,9	6,1	.

Appendix table 2. Nights spend in all establishments, June 2011

Region / municipality	Nights spend, total	Change of nights spend, total, %	Nights spend, residents	Change of nights spend, residents, %	Nights spend, non-residents	Change of nights spend, non-residents, %
Whole country	2 014 303	3,4	1 498 461	1,8	515 842	8,6
Mainland Finland	1 949 680	3,5	1 465 999	2,0	483 681	8,2
Uusimaa	508 673	6,2	264 360	5,2	244 313	7,3
Helsinki	325 293	7,6	131 996	8,6	193 297	7,0
Varsinais-Suomi	146 660	11,9	115 853	8,6	30 807	26,1
Turku	83 037	10,5	61 867	5,9	21 170	26,3
Satakunta	52 308	-12,2	45 331	-13,7	6 977	-0,8
Pori	25 768	-23,8	23 309	-25,4	2 459	-4,7
Kanta-Häme	43 604	4,0	39 019	3,9	4 585	4,3
Hämeenlinna	22 573	-8,4	19 889	-9,1	2 684	-2,2
Pirkanmaa	151 616	-0,7	126 617	-2,9	24 999	12,7
Tampere	89 572	-1,1	69 057	-5,0	20 515	14,7
Päijät-Häme	60 408	5,2	52 646	5,1	7 762	5,6
Lahti	19 754	10,5	15 385	22,3	4 369	-17,5
Kymenlaakso	36 831	0,0	28 012	-9,5	8 819	50,7
Kouvola	18 215	-7,2	15 297	-12,5	2 918	35,8
South Karelia	52 749	-1,0	31 067	-9,2	21 682	13,5
Lappeenranta	22 466	-8,3	14 872	-15,4	7 594	9,9
Etelä-Savo	85 230	25,3	69 640	23,5	15 590	33,9
Mikkeli	23 221	15,1	18 701	11,4	4 520	33,9
Pohjois-Savo	77 376	-11,3	68 697	-11,2	8 679	-12,5
Kuopio	41 159	-14,0	35 281	-14,6	5 878	-10,5
North Karelia	51 625	0,6	45 823	3,5	5 802	-17,5
Joensuu	19 520	4,5	16 557	7,6	2 963	-10,0
Central Finland	137 250	0,4	125 176	1,8	12 074	-12,0
Jyväskylä	39 635	0,5	30 639	-1,2	8 996	6,9
South Ostrobothnia	100 725	3,5	98 506	3,9	2 219	-10,0
Seinäjoki	45 407	12,5	44 164	13,4	1 243	-13,0
Ostrobothnia	45 361	5,0	35 794	-1,3	9 567	38,3
Vaasa	28 656	3,8	22 409	-1,9	6 247	31,1
Central Ostrobothnia	18 726	-10,3	16 833	-10,2	1 893	-11,0
Kokkola	12 345	-8,6	10 730	-7,9	1 615	-13,0
North Ostrobothnia	161 410	7,5	141 311	6,3	20 099	16,9
Oulu	55 306	4,3	41 357	0,4	13 949	17,9
Kainuu	77 107	1,3	71 794	-0,1	5 313	24,0
Kajaani	6 616	-16,4	5 780	-17,2	836	-10,7
Lapland	142 021	0,0	89 520	1,2	52 501	-1,9
Rovaniemi	41 133	-4,1	21 194	1,3	19 939	-9,3
Åland	64 623	3,1	32 462	-5,6	32 161	13,7
Maarianhamina	30 236	2,7	17 062	-11,5	13 174	29,7

Appendix table 3. Hotel capacity and capacity utilization, June 2011

Region / municipality	Number of establishments	Number of bedrooms	Occupancy rate of bedrooms %	Change of the occupancy rate compared to previous year, %-units	Room price, euros (Vat inc. 9 %)	¹⁾ RevPAR, euros (Vat inc. 9 %)
Whole country	651	51 218	55,0	0,7	87,35	48,03
Mainland Finland	633	50 365	54,9	0,6	87,18	47,89
Uusimaa	114	14 146	71,2	0,8	99,18	70,60
Helsinki	53	8 504	78,4	2,4	103,0	80,76
Varsinais-Suomi	40	3 266	65,6	7,0	87,51	57,39
Turku	19	2 148	69,9	6,5	89,34	62,46
Satakunta	25	1 246	51,6	1,6	81,97	42,32
Pori	8	595	56,3	4,4	80,24	45,14
Kanta-Häme	18	1 256	48,7	-4,0	84,38	41,06
Hämeenlinna	9	759	46,7	-7,1	92,49	43,18
Pirkanmaa	43	3 353	57,7	-0,0	89,33	51,57
Tampere	20	2 218	64,5	0,6	93,50	60,32
Päijät-Häme	19	1 843	46,3	3,4	80,24	37,19
Lahti	9	772	50,1	2,6	82,06	41,12
Kymenlaakso	16	977	48,6	-2,7	80,49	39,12
Kouvola	6	441	50,6	-5,0	73,58	37,24
South Karelia	20	1 360	57,2	-0,0	87,19	49,84
Lappeenranta	7	579	67,0	-5,2	81,38	54,52
Etelä-Savo	39	2 206	46,3	4,1	73,73	34,16
Mikkeli	7	602	57,0	10,7	87,16	49,70
Pohjois-Savo	28	2 228	50,2	-2,7	75,25	37,80
Kuopio	8	954	61,6	-2,9	83,65	51,50
North Karelia	25	1 459	41,8	-2,3	80,18	33,52
Joensuu	11	825	45,7	-0,8	78,49	35,87
Central Finland	32	2 777	51,4	-0,6	84,04	43,17
Jyväskylä	11	1 399	59,5	-1,3	81,25	48,35
South Ostrobothnia	23	1 531	54,7	-0,3	80,56	44,03
Seinäjoki	8	542	65,0	-1,8	82,39	53,52
Ostrobothnia	23	1 286	53,4	6,1	84,79	45,31
Vaasa	10	894	55,6	5,7	88,71	49,29
Central Ostrobothnia	10	512	43,8	-4,7	72,43	31,74
Kokkola	5	368	51,0	-3,8	76,94	39,27
North Ostrobothnia	48	3 366	45,1	2,9	75,70	34,14
Oulu	10	1 422	63,5	4,3	79,03	50,17
Kainuu	22	1 675	47,1	-1,8	65,57	30,88
Kajaani	7	453	31,0	-6,8	68,36	21,22
Lapland	88	5 878	31,2	-2,0	62,15	19,41
Rovaniemi	12	1 249	49,3	-4,4	59,52	29,34
Åland	18	853	58,2	1,6	.	.
Maarianhamina	8	545	74,2	6,2	.	.

1) RevPar = Average revenue per available room, equivalent to the accommodation revenue of an establishment divided by the available room capacity.

Appendix table 4. Nights spend in hotels, June 2011

Region / municipality	Nights spend, total	Change of nights spend, total, %	Nights spend, residents	Change of nights spend, residents, %	Nights spend, non-residents	Change of nights spend, non-residents, %
Whole country	1 404 076	3,6	981 729	2,0	422 347	7,5
Mainland Finland	1 375 574	3,7	965 966	2,3	409 608	7,2
Uusimaa	456 603	7,6	226 587	8,0	230 016	7,2
Helsinki	303 911	8,4	121 334	10,1	182 577	7,3
Varsinais-Suomi	105 851	12,7	81 368	8,9	24 483	27,3
Turku	72 487	11,4	54 660	6,8	17 827	28,3
Satakunta	27 735	2,1	22 195	2,7	5 540	-0,3
Pori	14 247	3,3	12 184	5,5	2 063	-8,1
Kanta-Häme	33 579	6,9	29 378	7,1	4 201	5,7
Hämeenlinna	17 768	-9,9	15 139	-11,3	2 629	-0,8
Pirkanmaa	103 149	-5,0	84 235	-6,8	18 914	3,9
Tampere	72 617	-4,7	55 904	-7,7	16 713	6,8
Päijät-Häme	45 076	3,9	38 846	3,9	6 230	4,3
Lahti	17 138	8,0	13 352	20,6	3 786	-21,1
Kymenlaakso	21 648	-4,4	15 832	-15,4	5 816	48,4
Kouvola	10 312	-11,5	8 521	-17,8	1 791	38,7
South Karelia	42 113	2,1	23 392	-6,9	18 721	16,0
Lappeenranta	19 371	-3,8	12 646	-13,1	6 725	20,7
Etelä-Savo	51 809	31,9	42 208	30,7	9 601	37,6
Mikkeli	16 754	27,8	12 374	22,8	4 380	44,6
Pohjois-Savo	56 157	-13,6	50 032	-13,3	6 125	-16,2
Kuopio	29 033	-12,3	24 348	-13,1	4 685	-8,0
North Karelia	32 150	-1,2	28 773	3,9	3 377	-30,1
Joensuu	16 725	4,7	14 236	8,9	2 489	-14,1
Central Finland	85 989	-2,1	75 456	0,1	10 533	-15,4
Jyväskylä	37 314	-4,1	28 813	-5,6	8 501	1,1
South Ostrobothnia	49 769	7,8	47 939	8,8	1 830	-13,3
Seinäjoki	15 514	1,5	14 321	3,1	1 193	-14,4
Ostrobothnia	31 360	1,1	24 810	-3,6	6 550	23,9
Vaasa	23 656	1,7	18 309	-3,3	5 347	23,7
Central Ostrobothnia	10 214	-13,3	8 801	-11,9	1 413	-21,1
Kokkola	8 069	-13,7	6 845	-11,5	1 224	-24,4
North Ostrobothnia	75 950	8,5	62 457	6,4	13 493	19,9
Oulu	43 296	3,8	33 124	0,2	10 172	17,4
Kainuu	56 119	-5,6	52 550	-6,8	3 569	16,4
Kajaani	6 355	-16,3	5 554	-16,9	801	-12,1
Lapland	90 303	-0,1	51 107	0,6	39 196	-0,9
Rovaniemi	31 389	-4,2	15 449	0,8	15 940	-8,6
Åland	28 502	-3,5	15 763	-16,2	12 739	18,9
Maarianhamina	22 244	3,7	12 603	-14,9	9 641	45,4

Appendix table 5. Visitor arrivals and nights spend by country of residence, June 2011

Country of residence	Visitor arrivals in all accommodation establishments	Nights spend in all accommodation establishments	Change of nights spend in all accommodation establishments, %	Nights spend in hotels	Change of nights spend in hotels, %
Total	1 088 781	2 014 303	3,4	1 404 076	3,6
Finland	802 669	1 498 461	1,8	981 729	2,0
Foreign countries	286 112	515 842	8,6	422 347	7,5
Sweden	32 153	56 522	7,0	37 830	4,8
Germany	44 685	73 382	11,5	56 075	9,4
Russia	44 883	77 761	27,9	63 026	26,2
United Kingdom	14 022	27 557	-6,1	25 239	-7,7
United States	13 602	28 450	19,0	27 116	19,2
Norway	8 646	14 957	4,9	11 921	8,5
Netherlands	10 650	17 418	-12,0	11 623	-16,0
Italy	7 187	13 700	10,5	12 153	9,5
France	8 633	14 910	-10,6	12 744	-9,4
Japan	7 185	12 724	8,1	12 219	6,6
Estonia	7 827	17 724	11,9	10 694	16,5
Spain	5 997	11 545	21,0	9 978	23,2

Appendix table 6. Nights spend in all establishments, 2011

Month	Nights spend, total	Change of nights spend, total, %	Nights spend, residents	Change of nights spend, residents, %	Nights spend, non-residents	Change of nights spend, non-residents, %
Total	9 069 021	4,1	6 578 516	1,9	2 490 505	10,1
January	1 314 565	7,8	776 522	6,7	538 043	9,5
February	1 341 092	1,2	991 277	1,2	349 815	1,5
March	1 674 144	3,0	1 255 457	0,3	418 687	11,8
April	1 398 158	1,1	1 094 948	-3,0	303 210	19,6
May	1 326 759	9,2	961 851	7,8	364 908	13,2
June	2 014 303	3,4	1 498 461	1,8	515 842	8,6

Suomen virallinen tilasto
Finlands officiella statistik
Official Statistics of Finland

Transport and Tourism 2011

Inquiries

Marjut Tuominen (09) 1734 3556

Merja Rönkä (09) 1734 3209

Director in charge:

Hannele Orjala

liikenne.matkailu@stat.fi

www.stat.fi

Source: Accommodation Statistics 2011. Statistics Finland