

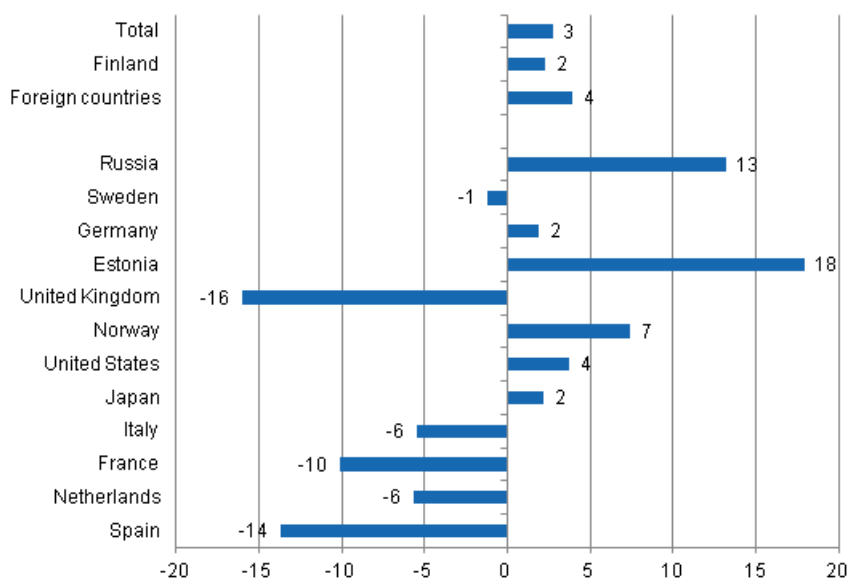
Accommodation statistics

2011, November

Nights spent by foreign tourists in Finland up by 4 per cent in November 2011

The number of recorded nights spent by foreign tourists at Finnish accommodation establishments in November 2011 was nearly 339,000, which was four per cent more than in November 2010. The total number of overnight stays increased by three per cent from the previous year and altogether 1.3 million overnight stays were recorded at accommodation establishments. The number of nights spent by resident tourists went up by two per cent and totalled 945,000 million in November 2011. These figures are preliminary data from Statistics Finland's statistics on accommodation establishments and they have been collected from accommodation establishments with at least 10 rooms, cottages, or caravan pitches with electricity connection, and youth hostels.

Change in overnight stays in November 2011/2010, %

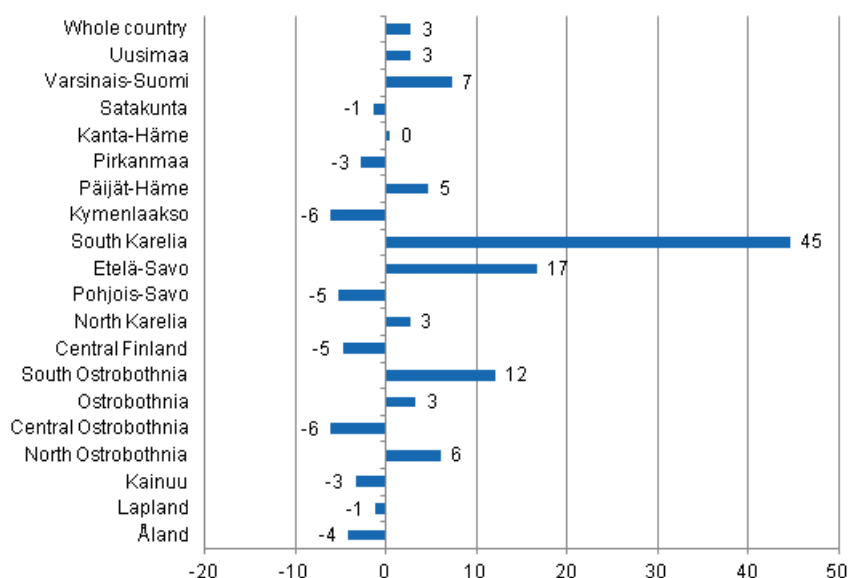


As usual, Russians were the largest group of foreign tourists also in November 2011 with their 96,000 overnight stays. The number of nights recorded for them at Finnish accommodation establishments was 13 per cent higher than one year earlier. Swedes were next with 33,000 nights spent. This was one per

cent down from November 2010. Visitors from Germany came third with close on 27,000 nights spent, which was two per cent up year-on-year. Overnight stays by Estonians increased most, by 18 per cent, and nearly 20,000 nights spent at accommodation establishments were recorded for them in November 2011. Compared with November 2010, the number of nights spent by Norwegian tourists was seven per cent up and that of nights spent by tourists from the United States four per cent up. By contrast, overnight stays at accommodation establishments by British tourists fell by 16 per cent and those by Spanish visitors by 14 per cent from the previous year.

By region, the total number of overnight stays in November 2011 increased most in the regions of South Karelia, up by 45 per cent, and Etelä-Savo, up by 17 per cent. The number of recorded overnight stays went up by 12 per cent in South Ostrobothnia and by seven per cent in Varsinais-Suomi from November 2010. Overnight stays increased by six per cent in North Ostrobothnia and by five per cent in Päijät-Häme. Three per cent growth was seen in Uusimaa, North Karelia and Ostrobothnia. Overnight stays decreased most in Kymenlaakso and Central Ostrobothnia, by six per cent in both. In the whole country, overnight stays increased by three per cent from November 2010.

Change in overnight stays in November by region 2011 / 2010, %



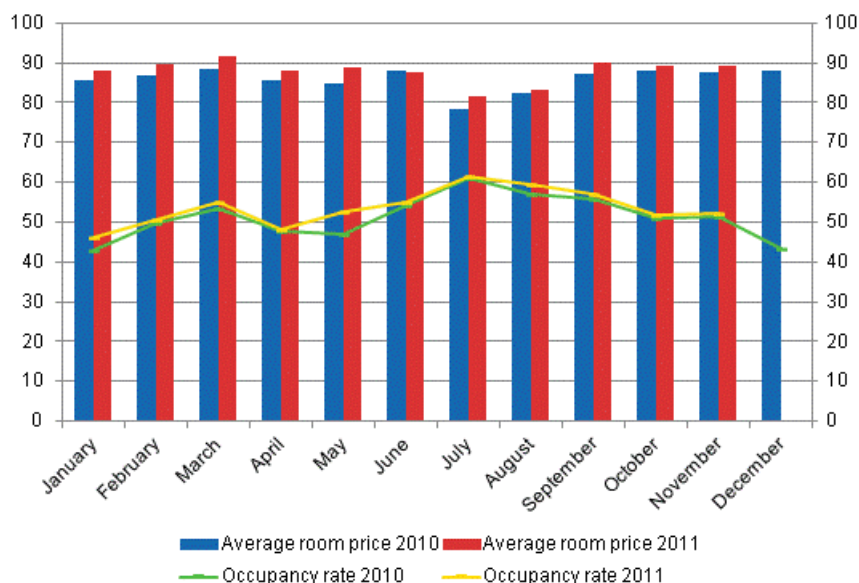
Overnight stays in hotels increased by three per cent in November 2011

The total number of nights spent in hotels rose to nearly 1.2 million in November 2011, which was three per cent up on the year before. Overnight stays by foreign tourists increased by four per cent and accommodation establishments recorded a total of 306,000 of them. Recorded nights spent by resident tourists in hotels numbered 854,000. The number was three per cent higher than in November 2010.

The occupancy rate of hotel rooms was 52.1 per cent in November 2011. One year earlier it was 51.2 per cent. Among the regions, the highest occupancy rates of hotel rooms were measured in Uusimaa, 66.5 per cent, and South Karelia, 62.5 per cent. In Vantaa, the hotel room occupancy rate was 74.2 per cent and in Lappeenranta 70.1 per cent. The hotel room occupancy rate in Helsinki was 71.5 per cent.

In November the realised average price of a hotel room was EUR 89.39 per day for the whole country. Twelve months previously it was EUR 87.42.

Hotel room occupancy rate and the monthly average price

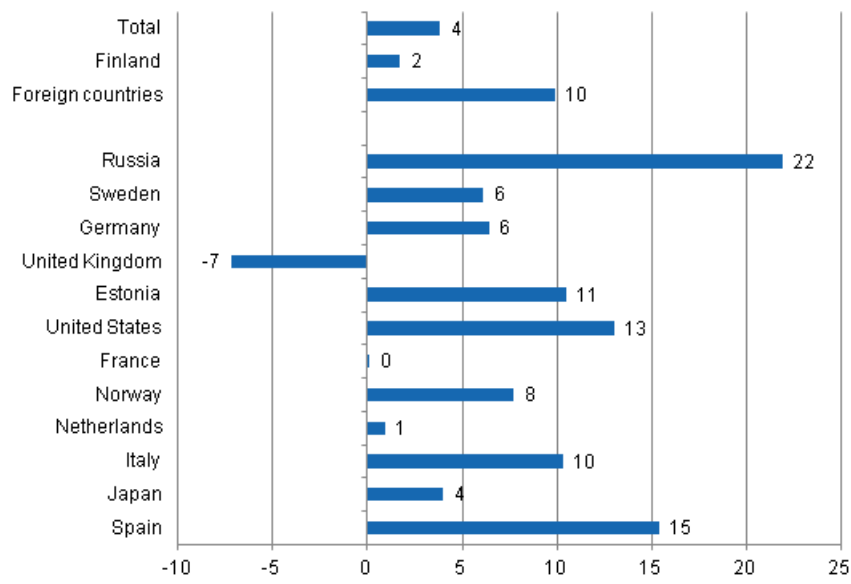


Total number of nights spent at all accommodation establishments went up by 4 per cent in the January to November 2011 period

Between January and November, the number of nights spent at accommodation establishments in Finland totalled close on 19 million, which was four per cent up on the respective time period of the previous year. Overnight stays by foreign tourists increased by 10 per cent and accommodation establishments recorded five million of them. Overnight stays by resident tourists numbered 13.7 million, which was two per cent more than in the same time period of the previous year.

Among the most important countries of inbound tourism to Finland, overnight stays by visitors from Russia increased most, or by 22 per cent, in the January to November period. Overnight stays by Spanish tourists went up by 15 per cent and those by visitors from the United States by 13 per cent year-on-year. The number of recorded nights spent by Estonian visitors increased by 11 per cent and those by Italians by 10 per cent from the corresponding period of the year before. Overnight stays by Norwegian tourists increased by eight per cent and those by Swedish and German tourists both by six per cent. By contrast, nights spent at accommodation establishments by tourists from Britain have been decreasing almost throughout the year 2011 and in the January to November 2011 period the decrease was still seven per cent.

Change in overnight stays in January-November 2011/2010, %



Contents

Tables

Appendix tables

Appendix table 1. Capacity and its utilization, November 2011.....	6
Appendix table 2. Nights spend in all establishments, November 2011.....	7
Appendix table 3. Hotel capacity and capacity utilization, November 2011.....	8
Appendix table 4. Nights spend in hotels, November 2011.....	9
Appendix table 5. Visitor arrivals and nights spend by country of residence, November 2011.....	10
Appendix table 6. Nights spend in all establishments, 2011.....	10

Appendix tables

Appendix table 1. Capacity and its utilization, November 2011

Region / municipality	Number of establishments	Number of bedrooms	Occupancy rate of bedrooms %	Change of the occupancy rate compared to previous year, %-units	Average price of nights spend, in euros (incl. VAT 9 %)
Whole country	961	55 950	48,6	1,5	58,34
Mainland Finland	934	55 178	49,0	0,5	58,32
Uusimaa	134	14 420	65,8	0,3	72,80
Helsinki	59	8 481	70,9	0,1	75,81
Varsinais-Suomi	59	3 663	47,4	-0,8	50,29
Turku	22	2 150	53,9	0,1	51,26
Satakunta	36	1 417	40,7	-1,0	58,28
Pori	10	691	44,3	-2,1	51,69
Kanta-Häme	27	1 379	41,9	0,7	56,57
Hämeenlinna	11	774	45,7	2,2	64,67
Pirkanmaa	64	3 928	57,6	1,1	59,51
Tampere	24	2 469	69,4	1,1	66,46
Päijät-Häme	28	1 901	42,2	4,1	51,30
Lahti	10	735	53,4	8,6	59,69
Kymenlaakso	19	1 079	42,0	-0,9	51,59
Kouvola	8	530	44,0	-1,6	48,64
South Karelia	29	1 618	55,8	7,4	48,90
Lappeenranta	12	842	62,8	0,7	46,72
Etelä-Savo	54	1 984	35,2	0,0	43,59
Mikkeli	7	533	56,5	3,0	52,10
Pohjois-Savo	43	2 394	49,6	-0,7	50,95
Kuopio	13	1 006	64,2	-3,8	56,90
North Karelia	41	1 576	38,2	0,7	62,29
Joensuu	11	760	52,1	2,3	57,44
Central Finland	46	2 800	43,3	-2,0	49,04
Jyväskylä	13	1 306	57,2	-6,8	62,89
South Ostrobothnia	36	1 651	45,6	0,2	42,75
Seinäjoki	9	617	52,1	-8,6	56,55
Ostrobothnia	31	1 349	50,6	5,0	60,77
Vaasa	10	829	58,3	10,5	62,26
Central Ostrobothnia	14	553	47,1	-3,0	53,66
Kokkola	7	395	55,0	1,8	59,17
North Ostrobothnia	85	4 082	45,4	2,2	48,53
Oulu	11	1 446	65,7	5,5	62,39
Kainuu	37	2 048	39,7	-2,2	39,18
Kajaani	8	496	31,1	-4,3	57,73
Lapland	151	7 336	29,0	-0,1	47,02
Rovaniemi	17	1 395	43,9	0,6	40,08
Åland	27	772	21,3	12,6	.
Maarianhamina	7	365	34,0	3,8	.

Appendix table 2. Nights spend in all establishments, November 2011

Region / municipality	Nights spend, total	Change of nights spend, total, %	Nights spend, residents	Change of nights spend, residents, %	Nights spend, non-residents	Change of nights spend, non-residents, %
Whole country	1 283 430	2,7	944 899	2,3	338 531	3,9
Mainland Finland	1 274 999	2,8	942 036	2,3	332 963	4,0
Uusimaa	398 202	2,7	236 759	3,2	161 443	2,0
Helsinki	255 127	0,3	137 041	0,8	118 086	-0,3
Varsinais-Suomi	82 369	7,2	70 399	11,4	11 970	-12,0
Turku	53 998	8,5	45 691	14,2	8 307	-15,0
Satakunta	23 531	-1,4	18 793	4,6	4 738	-19,5
Pori	12 911	-3,7	10 940	-0,7	1 971	-17,6
Kanta-Häme	28 189	0,4	24 563	-4,4	3 626	51,5
Hämeenlinna	16 297	2,8	13 484	-5,7	2 813	81,3
Pirkanmaa	106 398	-2,8	92 407	-2,9	13 991	-2,0
Tampere	73 707	-2,9	62 337	-2,8	11 370	-3,7
Päijät-Häme	41 637	4,6	35 954	5,8	5 683	-2,3
Lahti	16 619	6,8	12 803	10,2	3 816	-3,3
Kymenlaakso	21 495	-6,1	15 532	-8,1	5 963	-0,7
Kouvola	11 040	-12,4	8 965	-15,0	2 075	0,7
South Karelia	48 618	44,6	24 872	45,8	23 746	43,4
Lappeenranta	27 159	67,8	17 663	69,7	9 496	64,4
Etelä-Savo	35 287	16,7	28 715	18,1	6 572	11,2
Mikkeli	13 990	13,9	11 885	22,9	2 105	-19,6
Pohjois-Savo	55 459	-5,3	50 622	-6,5	4 837	8,8
Kuopio	29 428	-5,2	26 821	-6,1	2 607	5,0
North Karelia	28 103	2,6	24 113	2,2	3 990	5,1
Joensuu	16 260	1,9	13 466	1,3	2 794	4,8
Central Finland	59 098	-4,8	54 129	-3,3	4 969	-18,6
Jyväskylä	32 184	-10,8	28 721	-9,2	3 463	-22,3
South Ostrobothnia	39 571	12,1	38 096	12,5	1 475	2,3
Seinäjoki	13 953	5,3	13 281	7,8	672	-28,6
Ostrobothnia	27 044	3,3	21 029	0,2	6 015	15,5
Vaasa	18 891	6,9	14 080	0,5	4 811	31,4
Central Ostrobothnia	11 503	-6,1	10 835	-4,2	668	-29,0
Kokkola	8 883	11,4	8 399	15,2	484	-29,1
North Ostrobothnia	101 381	6,0	77 594	5,9	23 787	6,2
Oulu	42 278	9,7	35 725	11,0	6 553	3,2
Kainuu	54 518	-3,4	48 308	-3,1	6 210	-5,8
Kajaani	5 998	-17,4	5 405	-18,1	593	-10,3
Lapland	112 596	-1,2	69 316	-6,0	43 280	7,4
Rovaniemi	33 220	6,3	19 688	0,8	13 532	15,4
Åland	8 431	-4,2	2 863	-4,4	5 568	-4,1
Maarianhamina	5 337	-1,1	2 194	-7,4	3 143	3,8

Appendix table 3. Hotel capacity and capacity utilization, November 2011

Region / municipality	Number of establishments	Number of bedrooms	Occupancy rate of bedrooms %	Change of the occupancy rate compared to previous year, %-units	Room price, euros (Vat inc. 9 %)	¹⁾ RevPAR, euros (Vat inc. 9 %)
Whole country	620	49 386	52,1	0,9	89,39	46,55
Mainland Finland	608	48 845	52,4	0,9	89,38	46,83
Uusimaa	113	14 033	66,5	0,5	101,5	67,48
Helsinki	52	8 314	71,5	0,5	105,6	75,46
Varsinais-Suomi	38	3 163	50,4	0,7	79,48	40,09
Turku	19	2 082	54,5	0,0	80,50	43,91
Satakunta	23	1 133	47,7	-1,3	81,55	38,94
Pori	7	588	49,3	-1,9	75,09	36,99
Kanta-Häme	17	1 219	45,2	1,4	89,38	40,36
Hämeenlinna	8	732	47,3	3,2	98,09	46,36
Pirkanmaa	41	3 351	62,1	1,1	91,88	57,02
Tampere	21	2 317	69,7	1,2	94,75	66,05
Päijät-Häme	17	1 765	44,1	4,0	79,78	35,18
Lahti	8	712	53,3	8,1	84,81	45,18
Kymenlaakso	14	918	46,2	-1,9	82,31	38,07
Kouvola	5	407	52,9	-2,3	80,06	42,31
South Karelia	18	1 373	62,5	10,7	89,05	55,66
Lappeenranta	7	709	70,1	2,2	81,80	57,34
Etelä-Savo	29	1 562	40,3	0,2	71,98	28,99
Mikkeli	5	487	59,2	3,4	80,29	47,54
Pohjois-Savo	28	2 186	51,6	-0,7	80,83	41,70
Kuopio	8	925	65,4	-3,8	87,50	57,26
North Karelia	24	1 367	42,3	0,8	74,67	31,56
Joensuu	10	750	52,5	2,3	78,88	41,42
Central Finland	27	2 482	46,9	-1,8	80,34	37,72
Jyväskylä	9	1 200	61,2	-6,2	89,61	54,82
South Ostrobothnia	22	1 410	51,4	0,3	71,06	36,56
Seinäjoki	8	617	52,1	-8,6	77,82	40,57
Ostrobothnia	23	1 246	52,6	5,9	79,91	42,00
Vaasa	10	829	58,3	10,5	81,17	47,29
Central Ostrobothnia	10	505	49,1	-2,7	76,56	37,62
Kokkola	5	367	56,1	0,9	81,37	45,64
North Ostrobothnia	49	3 328	48,3	2,5	84,10	40,63
Oulu	10	1 418	65,9	5,2	88,45	58,31
Kainuu	21	1 643	46,8	-1,2	73,45	34,35
Kajaani	7	449	33,4	-5,1	76,15	25,41
Lapland	94	6 161	30,4	0,2	81,65	24,84
Rovaniemi	12	1 258	44,5	-0,1	72,18	32,15
Åland	12	541	23,9	-4,8	.	.
Maarianhamina	5	317	35,9	2,9	.	.

1) RevPar = Average revenue per available room, equivalent to the accommodation revenue of an establishment divided by the available room capacity.

Appendix table 4. Nights spend in hotels, November 2011

Region / municipality	Nights spend, total	Change of nights spend, total, %	Nights spend, residents	Change of nights spend, residents, %	Nights spend, non-residents	Change of nights spend, non-residents, %
Whole country	1 159 569	3,1	853 927	2,9	305 642	3,6
Mainland Finland	1 153 693	3,1	851 611	2,9	302 082	3,7
Uusimaa	383 615	2,5	228 283	2,6	155 332	2,3
Helsinki	244 391	0,4	131 476	0,4	112 915	0,4
Varsinais-Suomi	74 068	8,2	63 078	13,0	10 990	-13,3
Turku	52 747	8,7	44 864	13,9	7 883	-13,6
Satakunta	21 194	0,2	16 694	8,1	4 500	-21,2
Pori	11 583	-0,2	9 786	4,4	1 797	-19,4
Kanta-Häme	25 759	4,2	22 176	-0,9	3 583	52,8
Hämeenlinna	15 657	8,1	12 851	-0,8	2 806	82,3
Pirkanmaa	92 563	-3,9	80 301	-3,6	12 262	-6,1
Tampere	68 431	-2,7	57 816	-2,5	10 615	-3,7
Päijät-Häme	38 275	4,2	33 122	5,9	5 153	-5,2
Lahti	15 984	5,5	12 408	9,7	3 576	-6,7
Kymenlaakso	18 845	-4,0	13 478	-5,4	5 367	-0,1
Kouvola	9 361	-10,4	7 541	-12,8	1 820	1,4
South Karelia	46 305	44,3	22 958	46,0	23 347	42,8
Lappeenranta	25 339	60,1	16 185	59,9	9 154	60,4
Etelä-Savo	29 902	14,2	24 916	15,2	4 986	9,6
Mikkeli	13 153	14,6	11 190	22,7	1 963	-16,7
Pohjois-Savo	51 586	-5,9	47 536	-7,0	4 050	8,2
Kuopio	26 776	-5,9	24 494	-6,9	2 282	5,6
North Karelia	26 137	1,3	22 471	0,9	3 666	4,1
Joensuu	16 172	1,9	13 381	1,4	2 791	4,8
Central Finland	56 007	-5,0	51 135	-3,5	4 872	-18,4
Jyväskylä	31 270	-12,6	27 814	-11,2	3 456	-22,4
South Ostrobothnia	35 675	12,9	34 222	13,0	1 453	9,9
Seinäjoki	13 278	4,5	12 606	7,1	672	-28,6
Ostrobothnia	25 647	2,1	19 686	-1,5	5 961	15,8
Vaasa	18 891	6,9	14 080	0,5	4 811	31,4
Central Ostrobothnia	10 277	-2,2	9 675	-0,3	602	-24,8
Kokkola	8 191	10,3	7 771	13,9	420	-30,2
North Ostrobothnia	77 472	5,5	60 692	7,2	16 780	-0,2
Oulu	39 563	8,8	33 687	10,6	5 876	-0,6
Kainuu	49 609	-1,6	43 747	-0,7	5 862	-8,2
Kajaani	5 838	-17,2	5 245	-17,9	593	-10,3
Lapland	90 757	2,7	57 441	-1,3	33 316	10,2
Rovaniemi	28 869	3,8	17 043	-3,3	11 826	16,2
Åland	5 876	-4,8	2 316	-5,2	3 560	-4,6
Maarianhamina	5 126	-1,1	2 080	-7,3	3 046	3,6

Appendix table 5. Visitor arrivals and nights spend by country of residence, November 2011

Country of residence	Visitor arrivals in all accommodation establishments	Nights spend in all accommodation establishments	Change of nights spend in all accommodation establishments, %	Nights spend in hotels	Change of nights spend in hotels, %
Total	735 054	1 283 430	2,7	1 159 569	3,1
Finland	571 005	944 899	2,3	853 927	2,9
Foreign countries	164 049	338 531	3,9	305 642	3,6
Sweden	20 543	33 046	-1,2	29 858	-1,2
Germany	11 027	26 621	1,9	25 074	1,8
Russia	50 292	96 139	13,2	85 682	13,1
United Kingdom	9 153	17 598	-16,0	17 166	-15,5
United States	4 261	11 024	3,7	10 396	3,8
Norway	6 096	11 336	7,4	10 187	4,4
Netherlands	3 307	6 170	-5,7	5 952	-4,1
Italy	3 278	8 298	-5,5	7 839	-4,4
France	3 416	8 188	-10,1	7 374	-12,3
Japan	4 726	10 814	2,2	9 838	3,8
Estonia	6 732	19 693	17,9	12 171	13,2
Spain	2 059	4 956	-13,7	4 435	-15,7

Appendix table 6. Nights spend in all establishments, 2011

Month	Nights spend, total	Change of nights spend, total, %	Nights spend, residents	Change of nights spend, residents, %	Nights spend, non-residents	Change of nights spend, non-residents, %
Total	18 669 552	3,8	13 662 810	1,7	5 006 742	9,9
January	1 314 893	7,9	777 157	6,8	537 736	9,4
February	1 341 082	1,2	990 995	1,1	350 087	1,6
March	1 674 171	3,0	1 255 186	0,3	418 985	11,9
April	1 397 320	1,1	1 094 637	-3,0	302 683	19,4
May	1 329 364	9,4	966 490	8,3	362 874	12,6
June	2 028 959	4,2	1 504 336	2,2	524 623	10,4
July	3 134 525	2,2	2 390 697	0,4	743 828	8,5
August	2 199 933	5,1	1 487 101	1,7	712 832	13,1
September	1 568 857	4,4	1 168 302	2,4	400 555	10,8
October	1 397 018	2,4	1 083 010	0,8	314 008	8,5
November	1 283 430	2,7	944 899	2,3	338 531	3,9

Suomen virallinen tilasto
Finlands officiella statistik
Official Statistics of Finland

Transport and Tourism 2012

Inquiries

Marjut Tuominen (09) 1734 3556

Merja Rönkä (09) 1734 3209

Director in charge:

Hannele Orjala

liikenne.matkailu@stat.fi

www.stat.fi

Source: Accommodation Statistics 2011. Statistics Finland