

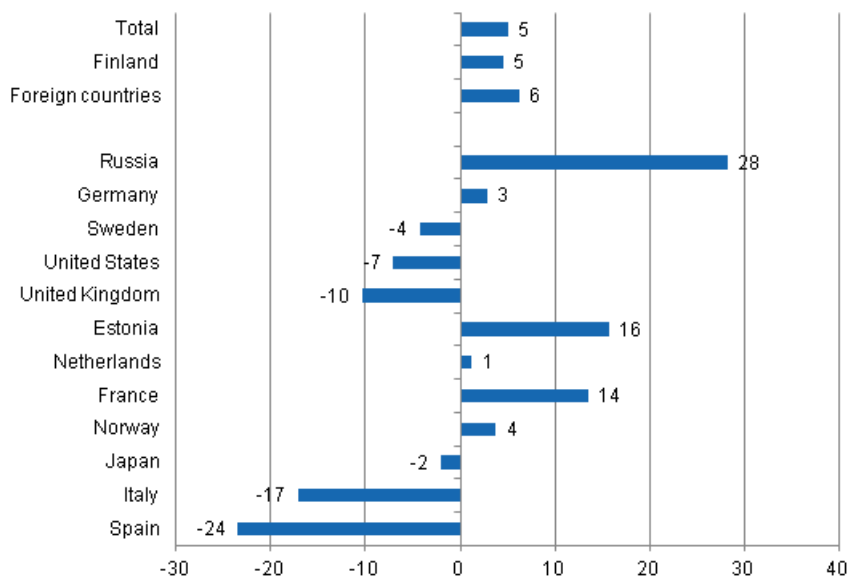
# Accommodation statistics

2012, June

## Nights spent by foreign tourists in Finland up by 6 per cent in June 2012

The number of recorded nights spent by foreign tourists at Finnish accommodation establishments in June 2012 was 557,000, which was six per cent higher than in June 2011. The number of recorded nights spent by resident tourists in June was close on 1.6 million, which was 4.5 per cent higher than one year earlier. The total number of nights spent grew by five per cent from June 2011 and rose to 2.1 million overnights. These figures are preliminary data from Statistics Finland's statistics on accommodation establishments and they have been collected from accommodation establishments with at least 20 beds or caravan pitches with electricity connection, and youth hostels.

### Change in overnight stays in June 2012/2011, %

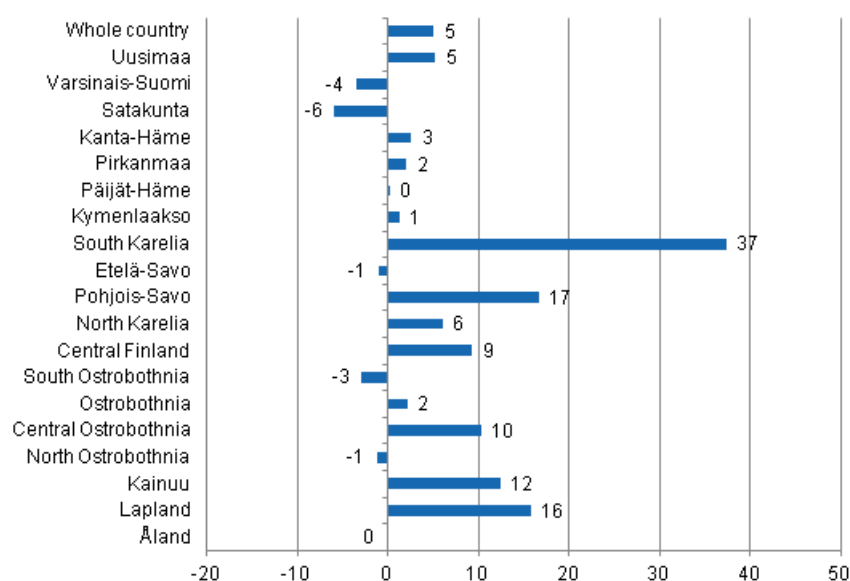


Russians were again by far the biggest group of foreigners at accommodation establishments in June 2012 with 100,000 nights spent. Overnight stays of Russian tourists went up by 28 per cent from the year before. Germans were next with 76,000 nights spent. Overnight stays of Germans went up by three per cent.

Swedish tourists came third with nearly 61,000 overnight stays at accommodation establishments, which was, however, four per cent less than in June 2011. Overnight stays recorded at accommodation establishments for American visitors totalled good 26,000, which was seven per cent less than one year before. Overnight stays of British tourists also went down from last year's June. They spent close on 25,000 nights at accommodation establishments, which was ten per cent less than in June 2011. Overnight stays of Spanish visitors also fell by 24 per cent and those of Italians by 17 per cent. By contrast, the number of overnight stays of tourists from Estonia, France, Norway and the Netherlands increased. Overnight stays of Estonians went up by 16 per cent, those of French tourists by 14 per cent, those of Norwegians by four per cent and those of Dutch visitors by one per cent from June 2011.

Examined by region, the total number of overnight stays in June 2012 increased most in South Karelia, by 37 per cent, in Pohjois-Savo, by 17 per cent and in Lapland, by 16 per cent from one year back. Overnight stays decreased most in Satakunta, by six per cent, and in Varsinais-Suomi, by four per cent.

### Change in overnight stays in June by region 2012 / 2011, %



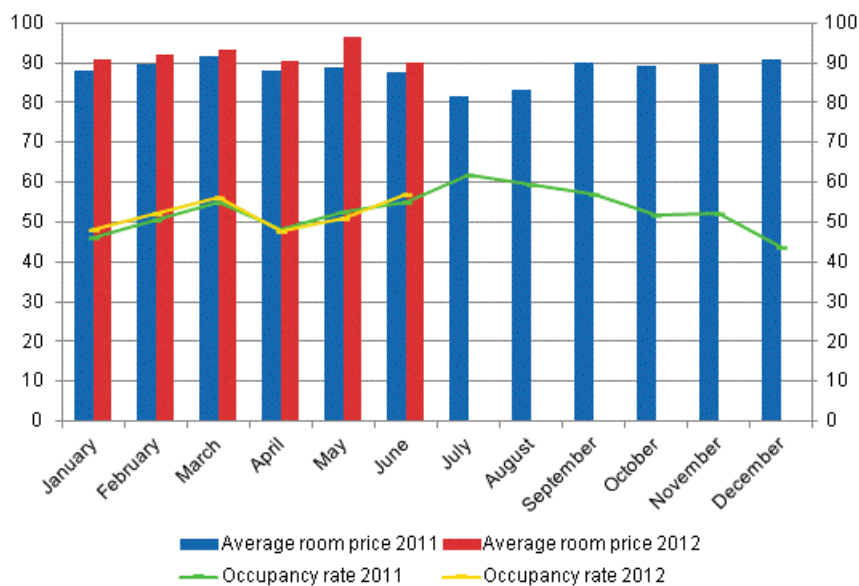
### Nights spent in hotels increased by 7 per cent in June 2012

The total number of nights spent in hotels in June was 1.5 million, which was seven per cent more than twelve months previously. Foreign visitors spent 459,000 nights in hotels, which was eight per cent more than in last year's June. The number of recorded nights spent by resident tourists in hotels was good one million, which was seven per cent more than in June 2011.

The occupancy rate of hotel rooms was 56.8 per cent in June. One year earlier, it was 55.1 per cent. Among the regions, the highest occupancy rates of hotel rooms were measured in Uusimaa, 72.5 per cent, and Varsinais-Suomi, 61.8 per cent. Hotel room occupancy rate in Helsinki was 79.6 per cent.

In June, the realised average price of a hotel room was EUR 90.01 per day for the whole country. Twelve months previously it was EUR 87.38.

### Hotel room occupancy rate and the monthly average price

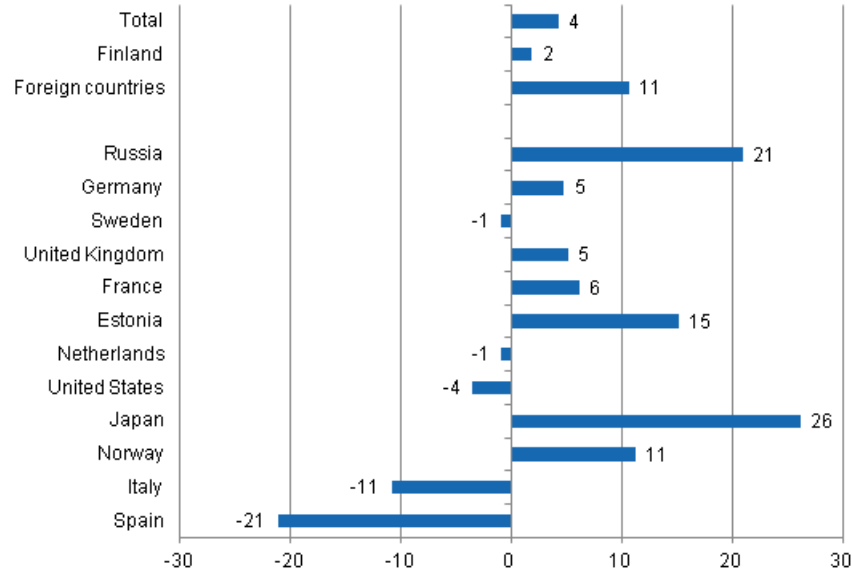


### *A total of 9.5 million nights spent in the January to June period*

During the January to June 2012 period, the number of nights spent by tourists at accommodation establishments totalled 9.5 million, which was four per cent more than in the respective period of the previous year. Overnight stays by resident tourists increased by nearly two per cent and accommodation establishments recorded a total of 6.7 million of them. The number of recorded nights spent by foreign tourists at Finnish accommodation establishments was 2.8 million, which was 11 per cent more than in January to June 2011.

In the January to June period, the number of overnight stays recorded for Russians at Finnish accommodation establishments was 773,000 and as usual, they were the biggest group of foreign visitors in Finland. Their number of overnight stays went up by 21 per cent when compared with the respective time period of the year before. Visitors from Germany came next with 254,000 nights spent, which was nearly five per cent up on the January to June period of 2011. Swedish visitors were the third largest group with 220,000 overnight stays. The number of their overnight stays decreased by one per cent from one year ago. By contrast, overnight stays of Japanese tourists increased by 26 per cent, those of Estonians by 15 per cent and those of Norwegians by 11 per cent. Overnight stays of British and French visitors increased by five to six per cent from the respective period of last year.

**Change in overnight stays in January-June 2012/2011, %**



# Contents

## Tables

### Appendix tables

Appendix table 1. Capacity and its utilization, June 2012.....	6
Appendix table 2. Nights spend in all establishments, June 2012.....	7
Appendix table 3. Hotel capacity and capacity utilization, June 2012.....	8
Appendix table 4. Nights spend in hotels, June 2012.....	9
Appendix table 5. Visitor arrivals and nights spend by country of residence, June 2012.....	10
Appendix table 6. Nights spend in all establishments, 2012.....	10

## Appendix tables

**Appendix table 1. Capacity and its utilization, June 2012**

Region / municipality	Number of establishments	Number of bedrooms	Occupancy rate of bedrooms %	Change of the occupancy rate compared to previous year, %-units	Average price of nights spend, in euros (incl. VAT 9 %)
Whole country	1 335	65 666	51,5	1,2	45,85
Mainland Finland	1 262	64 028	51,6	1,2	45,93
Uusimaa	156	15 294	71,4	1,2	64,88
Helsinki	61	8 836	79,4	1,2	72,03
Varsinais-Suomi	88	4 216	53,9	-5,1	42,80
Turku	25	2 278	63,7	-4,8	44,90
Satakunta	44	1 701	45,7	-2,5	42,54
Pori	13	785	53,1	-1,9	43,32
Kanta-Häme	32	1 578	45,3	1,0	39,94
Hämeenlinna	14	874	43,3	0,3	41,38
Pirkanmaa	80	4 763	52,0	-3,6	45,66
Tampere	29	2 948	59,0	-5,0	51,80
Päijät-Häme	35	2 051	45,2	0,5	40,76
Lahti	12	766	51,0	0,7	49,92
Kymenlaakso	28	1 220	45,9	-1,3	41,20
Kouvola	11	585	47,8	-1,1	37,92
South Karelia	41	2 145	54,5	3,2	40,32
Lappeenranta	15	1 060	62,7	1,9	43,09
Etelä-Savo	81	3 078	41,2	0,3	33,17
Mikkeli	12	735	53,7	-0,7	44,00
Pohjois-Savo	58	2 854	50,0	1,9	41,33
Kuopio	20	1 335	61,2	3,1	45,80
North Karelia	65	2 026	40,5	3,2	39,08
Joensuu	15	864	51,3	5,9	50,24
Central Finland	69	3 694	47,2	1,8	39,39
Jyväskylä	18	1 692	54,0	-3,1	54,93
South Ostrobothnia	50	1 974	46,0	-1,4	35,25
Seinäjoki	10	631	54,4	-8,8	51,77
Ostrobothnia	41	1 566	49,5	3,1	40,08
Vaasa	9	840	63,2	8,5	44,71
Central Ostrobothnia	24	718	47,1	8,2	40,83
Kokkola	12	499	56,5	9,8	43,15
North Ostrobothnia	111	4 859	40,7	0,6	27,90
Oulu	13	1 802	56,4	-4,0	47,73
Kainuu	55	2 274	46,5	5,9	32,51
Kajaani	8	453	37,9	9,5	51,49
Lapland	204	8 017	34,5	4,9	32,70
Rovaniemi	20	1 378	59,5	12,5	35,48
Åland	73	1 638	50,6	-1,1	.
Maarianhamina	14	672	68,4	-0,8	.

**Appendix table 2. Nights spend in all establishments, June 2012**

Region / municipality	Nights spend, total	Change of nights spend, total, %	Nights spend, residents	Change of nights spend, residents, %	Nights spend, non-residents	Change of nights spend, non-residents, %
Whole country	2 130 845	5,0	1 573 344	4,5	557 501	6,2
Mainland Finland	2 057 258	5,2	1 539 060	4,6	518 198	6,8
Uusimaa	538 041	5,2	282 374	5,9	255 667	4,5
Helsinki	332 583	2,3	135 801	3,1	196 782	1,8
Varsinais-Suomi	143 772	-3,6	118 915	1,1	24 857	-21,1
Turku	82 705	-3,5	65 379	2,5	17 326	-21,0
Satakunta	49 191	-6,0	42 442	-6,4	6 749	-3,9
Pori	23 586	-8,6	20 548	-11,8	3 038	21,1
Kanta-Häme	45 547	2,5	40 986	3,3	4 561	-3,8
Hämeenlinna	23 424	0,5	20 374	-0,8	3 050	10,0
Pirkanmaa	154 669	2,0	131 804	4,1	22 865	-9,0
Tampere	97 187	8,5	78 270	13,3	18 917	-7,8
Päijät-Häme	61 051	0,1	51 710	-2,9	9 341	20,6
Lahti	19 548	-1,0	14 935	-2,9	4 613	5,6
Kymenlaakso	37 268	1,2	27 751	-0,9	9 517	7,9
Kouvola	17 451	-4,2	14 341	-6,2	3 110	6,6
South Karelia	73 899	37,4	43 702	36,4	30 197	38,9
Lappeenranta	39 310	75,0	25 678	72,7	13 632	79,5
Etelä-Savo	83 790	-1,1	66 585	-2,7	17 205	5,8
Mikkeli	21 419	-2,1	14 687	-14,2	6 732	41,1
Pohjois-Savo	89 882	16,6	78 453	14,7	11 429	31,7
Kuopio	48 476	17,8	42 419	20,2	6 057	3,0
North Karelia	54 326	6,0	46 375	2,1	7 951	37,5
Joensuu	21 938	12,4	17 625	6,5	4 313	45,6
Central Finland	149 600	9,3	133 650	7,0	15 950	33,7
Jyväskylä	40 429	2,0	30 552	-0,3	9 877	9,8
South Ostrobothnia	96 679	-2,9	94 494	-2,9	2 185	-3,4
Seinäjoki	39 018	-14,1	38 111	-13,7	907	-27,0
Ostrobothnia	48 464	2,1	38 638	1,6	9 826	4,1
Vaasa	30 340	5,9	23 394	4,4	6 946	11,2
Central Ostrobothnia	20 663	10,3	17 942	6,6	2 721	43,7
Kokkola	14 925	20,9	12 675	18,1	2 250	39,3
North Ostrobothnia	159 113	-1,3	140 143	-0,8	18 970	-4,8
Oulu	54 572	-0,8	41 946	1,9	12 626	-8,6
Kainuu	86 411	12,4	79 158	10,7	7 253	35,7
Kajaani	8 011	21,1	7 079	22,5	932	11,5
Lapland	164 892	15,8	103 938	15,8	60 954	15,8
Rovaniemi	49 736	20,9	28 933	36,5	20 803	4,3
Åland	73 587	-0,2	34 284	0,4	39 303	-0,7
Maarianhamina	31 231	-0,5	17 951	1,3	13 280	-2,9

**Appendix table 3. Hotel capacity and capacity utilization, June 2012**

Region / municipality	Number of establishments	Number of bedrooms	Occupancy rate of bedrooms %	Change of the occupancy rate compared to previous year, %-units	Room price, euros (Vat inc. 9 %)	<sup>1)</sup> RevPAR, euros (Vat inc. 9 %)
Whole country	663	52 446	56,8	1,7	90,01	51,11
Mainland Finland	646	51 594	56,7	1,7	89,92	51,02
Uusimaa	119	14 620	72,5	1,2	103,52	75,02
Helsinki	53	8 689	79,6	1,1	110,79	88,14
Varsinais-Suomi	39	3 184	61,8	-3,8	86,34	53,35
Turku	18	2 086	65,8	-4,1	86,81	57,13
Satakunta	26	1 303	48,8	-2,9	82,81	40,42
Pori	9	659	55,6	-0,9	83,96	46,67
Kanta-Häme	18	1 275	49,5	-0,0	84,31	41,76
Hämeenlinna	8	728	47,7	-0,6	88,98	42,41
Pirkanmaa	45	3 783	54,2	-3,7	89,16	48,32
Tampere	23	2 640	59,7	-4,8	92,21	55,10
Päijät-Häme	17	1 772	47,4	1,1	81,14	38,44
Lahti	8	719	51,2	1,1	79,76	40,87
Kymenlaakso	17	992	49,2	0,6	82,29	40,49
Kouvola	6	441	54,6	4,0	79,90	43,62
South Karelia	21	1 568	61,3	3,7	89,64	54,98
Lappeenranta	8	801	70,8	3,8	84,84	60,10
Etelä-Savo	38	2 192	46,8	1,3	75,58	35,37
Mikkeli	8	616	58,1	1,1	82,59	47,96
Pohjois-Savo	29	2 318	52,8	0,9	85,90	45,34
Kuopio	10	1 089	63,6	2,1	94,58	60,19
North Karelia	26	1 443	47,0	5,1	82,48	38,79
Joensuu	11	824	51,1	5,1	78,29	40,00
Central Finland	31	2 860	54,0	3,0	91,30	49,26
Jyväskylä	12	1 570	56,8	-2,7	86,79	49,29
South Ostrobothnia	26	1 566	51,5	-2,8	76,39	39,33
Seinäjoki	8	612	55,6	-9,3	79,71	44,35
Ostrobothnia	23	1 256	55,6	2,0	84,27	46,85
Vaasa	8	809	62,3	6,7	86,38	53,81
Central Ostrobothnia	10	554	51,6	7,6	75,18	38,80
Kokkola	5	410	59,3	8,2	75,46	44,78
North Ostrobothnia	48	3 399	45,5	0,4	75,27	34,24
Oulu	11	1 555	58,1	-5,3	80,11	46,58
Kainuu	22	1 653	54,7	7,7	68,28	37,36
Kajaani	6	406	41,9	10,8	79,41	33,25
Lapland	91	5 856	38,8	7,7	65,98	25,59
Rovaniemi	12	1 230	61,5	13,7	68,75	42,30
Åland	17	852	59,9	-1,4	.	.
Maarianhamina	8	529	73,8	-0,4	.	.

1) RevPar = Average revenue per available room, equivalent to the accommodation revenue of an establishment divided by the available room capacity.



**Appendix table 4. Nights spend in hotels, June 2012**

Region / municipality	Nights spend, total	Change of nights spend, total, %	Nights spend, residents	Change of nights spend, residents, %	Nights spend, non-residents	Change of nights spend, non-residents, %
Whole country	1 509 107	7,1	1 050 178	6,9	458 929	7,8
Mainland Finland	1 478 633	7,4	1 033 926	6,9	444 707	8,5
Uusimaa	483 448	5,8	239 741	5,5	243 707	6,1
Helsinki	313 321	3,1	124 181	2,3	189 140	3,6
Varsinais-Suomi	103 299	-4,4	84 263	1,6	19 036	-24,2
Turku	71 528	-4,2	57 305	1,9	14 223	-22,9
Satakunta	28 651	3,1	23 438	5,6	5 213	-6,7
Pori	16 300	14,1	13 589	11,6	2 711	28,4
Kanta-Häme	33 511	0,2	29 467	0,7	4 044	-3,7
Hämeenlinna	17 709	0,1	14 854	-1,4	2 855	8,6
Pirkanmaa	110 861	7,6	92 739	10,3	18 122	-4,2
Tampere	83 460	14,9	67 092	20,0	16 368	-2,1
Päijät-Häme	45 422	0,8	38 015	-2,1	7 407	19,1
Lahti	16 755	-2,2	12 936	-3,1	3 819	0,9
Kymenlaakso	23 707	9,5	16 317	3,1	7 390	27,1
Kouvola	11 208	8,7	8 509	-0,1	2 699	50,7
South Karelia	55 271	29,5	31 092	29,8	24 179	29,0
Lappeenranta	31 085	60,5	20 531	62,4	10 554	56,9
Etelä-Savo	52 086	2,9	40 816	-0,6	11 270	17,5
Mikkeli	18 407	9,9	11 984	-3,2	6 423	46,6
Pohjois-Savo	64 613	15,1	56 180	12,3	8 433	37,7
Kuopio	34 109	17,5	29 409	20,8	4 700	0,3
North Karelia	35 421	10,2	30 321	5,4	5 100	51,0
Joensuu	18 350	9,7	14 758	3,7	3 592	44,3
Central Finland	93 969	9,7	80 058	6,4	13 911	33,9
Jyväskylä	38 625	3,5	28 820	0,0	9 805	15,3
South Ostrobothnia	49 770	0,3	47 987	0,5	1 783	-4,6
Seinäjoki	15 162	-2,3	14 308	-0,1	854	-28,4
Ostrobothnia	31 936	1,9	23 844	-3,8	8 092	23,5
Vaasa	23 821	0,7	17 393	-5,0	6 428	20,2
Central Ostrobothnia	12 322	20,6	10 258	16,6	2 064	46,1
Kokkola	10 242	26,9	8 288	21,1	1 954	59,6
North Ostrobothnia	77 634	2,1	65 071	4,0	12 563	-6,7
Oulu	43 872	1,3	34 462	4,0	9 410	-7,5
Kainuu	65 641	17,4	60 190	15,0	5 451	52,7
Kajaani	7 760	22,1	6 855	23,4	905	13,0
Lapland	111 071	22,5	64 129	24,9	46 942	19,4
Rovaniemi	39 835	26,9	23 527	52,3	16 308	2,3
Åland	30 474	-3,5	16 252	3,6	14 222	-10,5
Maarianhamina	22 092	-0,7	12 842	1,9	9 250	-4,1

**Appendix table 5. Visitor arrivals and nights spend by country of residence, June 2012**

Country of residence	Visitor arrivals in all accommodation establishments	Nights spend in all accommodation establishments	Change of nights spend in all accommodation establishments, %	Nights spend in hotels	Change of nights spend in hotels, %
Total	1 162 598	2 130 845	5,0	1 509 107	7,1
Finland	858 000	1 573 344	4,5	1 050 178	6,9
Foreign countries	304 598	557 501	6,2	458 929	7,8
Sweden	32 336	60 510	-4,3	37 459	-8,5
Germany	48 012	76 059	2,8	59 974	6,8
Russia	57 313	100 237	28,2	81 016	28,3
United Kingdom	12 495	24 740	-10,4	22 976	-8,8
United States	11 842	26 359	-7,1	25 621	-5,3
Norway	8 890	15 791	3,7	12 782	6,9
Netherlands	10 200	17 584	1,2	12 219	4,9
Italy	5 753	11 444	-17,1	10 447	-14,1
France	8 646	16 862	13,5	14 302	12,4
Japan	6 735	12 434	-2,1	12 071	-1,3
Estonia	9 040	21 497	15,7	12 954	17,5
Spain	4 414	8 858	-23,5	7 344	-26,4

**Appendix table 6. Nights spend in all establishments, 2012**

Month	Nights spend, total	Change of nights spend, total, %	Nights spend, residents	Change of nights spend, residents, %	Nights spend, non-residents	Change of nights spend, non-residents, %
Total	9 473 098	4,2	6 710 100	1,8	2 762 998	10,6
January	1 403 136	6,7	786 147	1,1	616 989	14,7
February	1 460 240	8,8	1 028 692	3,7	431 548	23,1
March	1 742 657	4,1	1 292 869	3,0	449 788	7,3
April	1 394 509	-0,2	1 076 297	-1,7	318 212	5,0
May	1 341 711	0,9	952 751	-1,4	388 960	7,1
June	2 130 845	5,0	1 573 344	4,5	557 501	6,2

---

Suomen virallinen tilasto  
Finlands officiella statistik  
Official Statistics of Finland

Transport and Tourism 2012

### Inquiries

Marjut Tuominen 09 1734 3556

Merja Rönkä 09 1734 3209

Director in charge:

Hannele Orjala

[liikenne.matkailu@stat.fi](mailto:liikenne.matkailu@stat.fi)

[www.stat.fi](http://www.stat.fi)

Source: Accommodation Statistics 2012. Statistics Finland