

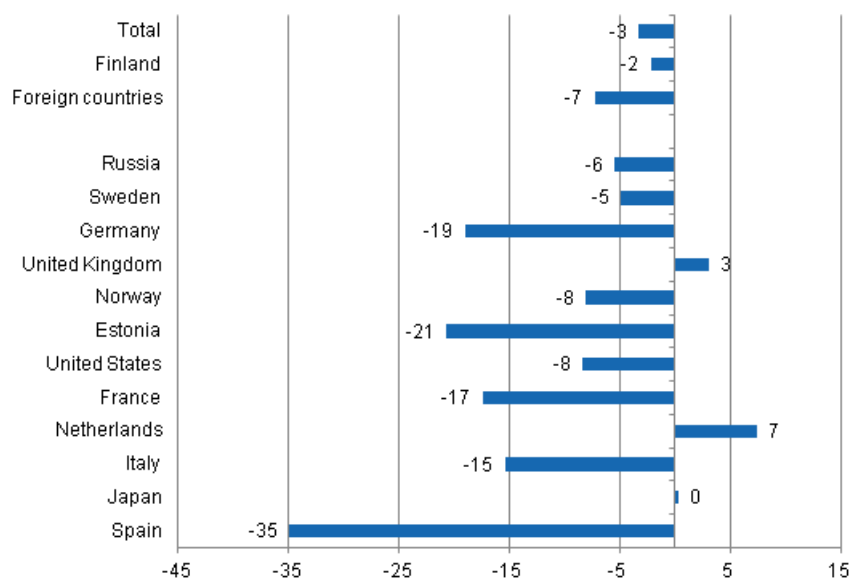
Accommodation statistics

2013, April

Nights spent by foreign tourists in Finland down by 7.3 per cent in April 2013

The number of recorded nights spent by foreign tourists at Finnish accommodation establishments in April 2013 was good 295,000, which was 7.3 per cent less than in April 2012. The number of nights spent by resident tourists went down by 2.2 per cent and totalled close on 1.1 million overnight stays. The total number of overnight stays decreased by 3.3 per cent from last year and altogether good 1.3 million overnight stays were recorded at accommodation establishments in April 2013. These figures are preliminary data from Statistics Finland's statistics on accommodation establishments and they have been collected from accommodation establishments with at least 20 beds or caravan pitches with electricity connection, and youth hostels.

Change in overnight stays in April 2013/2012, %

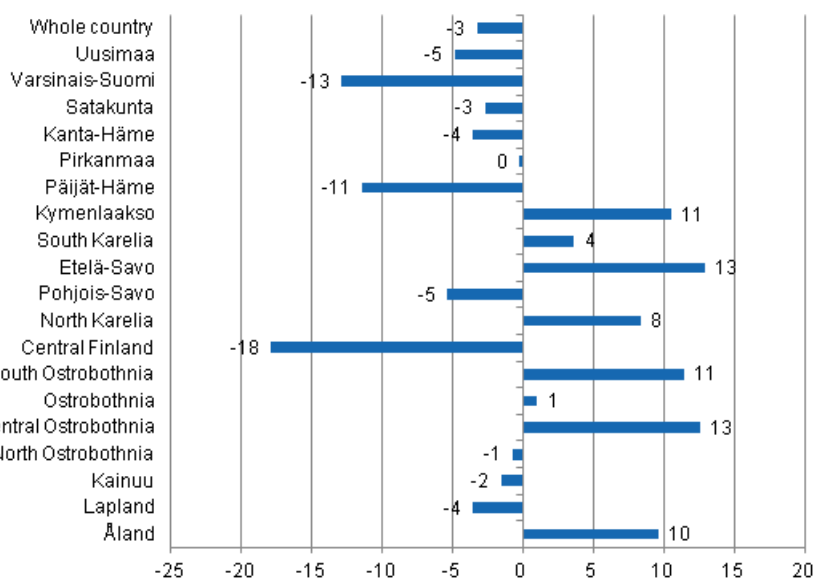


As usual, Russians were the largest group of foreign tourists in April 2013. Finnish accommodation establishments recorded 72,000 overnight stays for them, which was 5.5 per cent less than one year before. Swedes came next with nearly 32,000 nights spent. The statistics compiled show that their overnights

were 4.9 per cent down on April 2012. Over 20,000 overnight stays at accommodation establishments were recorded for both German and British visitors. Overnight stays by Germans went down by nearly one-fifth from the year before, while those by British tourists have grown strongly throughout the early part of the year, and still went up by 3.1 per cent from April 2012. Overnight stays by Dutch visitors at accommodation establishments increased most, up by 7.4 per cent and the recorded number of overnight stays by Japanese tourists was nearly the same as one year before. Nights spent in Finland by visitors from the other most important inbound tourism countries decreased strongly in April 2013. The decrease was biggest in the overnight stays of Spanish visitors, down by 34.9 per cent. Overnight stays by Estonians went down by good one-fifth and those by Italian and French tourists by 15 to 17 per cent from last year.

By region, the total number of overnight stays increased most in April in the regions of Etelä-Savo, up by 12.9 per cent, and in Central Ostrobothnia, up by 12.6 per cent. Overnight stays increased by 11.4 per cent in South Ostrobothnia and by 10.5 per cent in Kymenlaakso. Overnight stays decreased most in Central Finland, by 17.9 per cent. Decreases of 11 to 13 per cent were recorded for overnight stays in Päijät-Häme and Varsinais-Suomi. The number of overnight stays in the whole country recorded at accommodation establishments fell by 3.3 per cent from one year earlier.

Change in overnight stays in April by region 2013 / 2012, %



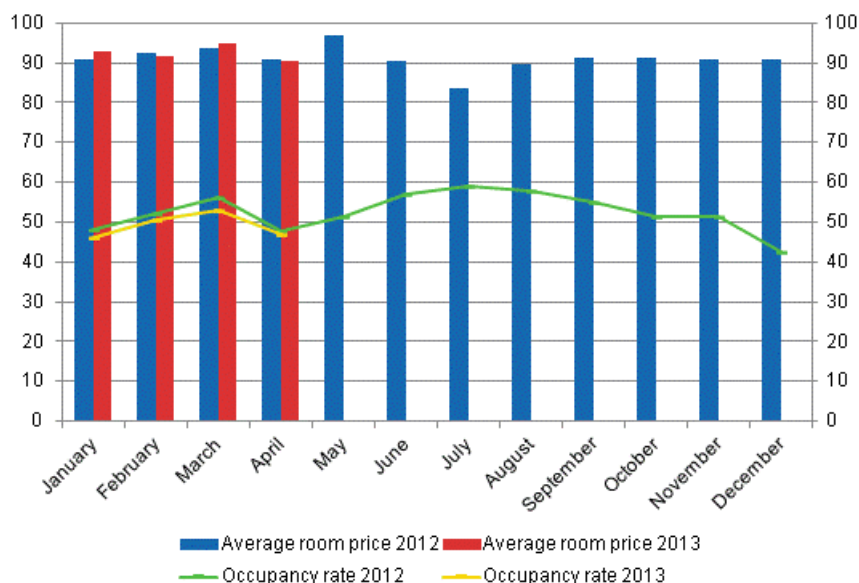
Nights spent in hotels decreased by 3.9 per cent in April 2013

In April 2013, the total number of nights spent in hotels was good 1.1 million, which was 3.9 per cent fewer than twelve months earlier. Recorded nights spent by resident tourists in hotels numbered good 873,000. The number was 2.8 per cent lower than in April 2012. Overnight stays by foreign tourists decreased by 7.5 per cent and hotels recorded close on 265,000 of them.

The occupancy rate of hotel rooms was 46.9 per cent in April. One year earlier, it was 47.9 per cent. Among the regions, the highest occupancy rates of hotel rooms were measured in Uusimaa, 55.5 per cent, and South Karelia, 50.4 per cent. In Vantaa, the hotel room occupancy rate was 62.9 per cent and in Lappeenranta 58.2 per cent. Hotel room occupancy rate in Helsinki was 58.4 per cent.

In April 2013, the realised average price of a hotel room was EUR 90.64 per day for the whole country. One year earlier, it was nearly the same at EUR 90.72.

Hotel room occupancy rate and the monthly average price

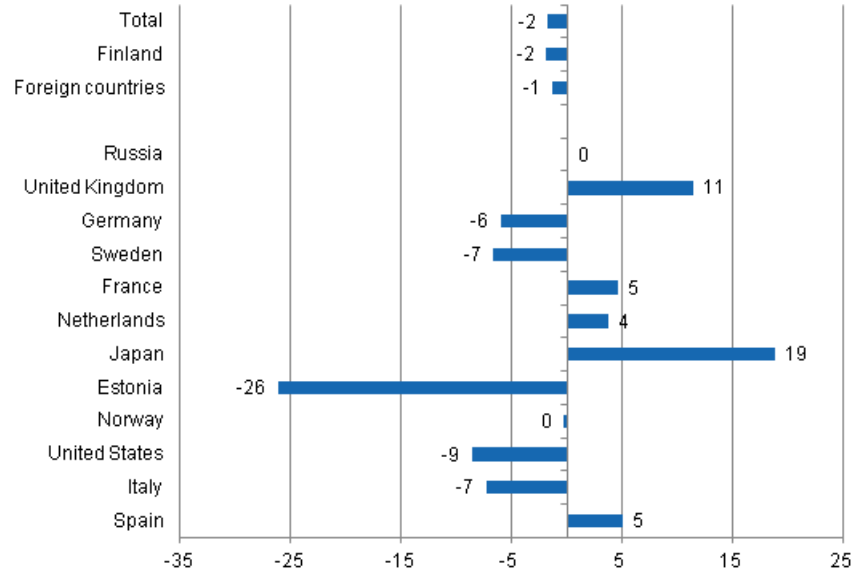


Total number of nights spent at all accommodation establishments fell by 1.7 per cent in January to April 2013

Between January and April 2013, the number of nights spent at accommodation establishments in Finland totalled nearly 5.9 million, which was 1.7 per cent down on the respective period of last year. Overnight stays by resident tourists decreased by 1.9 per cent and accommodation establishments recorded a total of 4.1 million of them. Overnight stays by foreign tourists numbered close on 1.8 million, which was 1.3 per cent less than in January to April 2012.

Accommodation establishments recorded almost 593,000 million overnight stays for Russians and, as usual, they were by far the largest group of foreign visitors in January to April 2013. Their number of overnight stays was almost unchanged from the respective period of the previous year. British and German visitors came next. Overnight stays recorded for British visitors increased by 11.4 per cent and totalled good 151,000. Germans spent nearly 138,000 nights at Finnish accommodation establishments, although the figure was six per cent down from the respective period of last year. Nearly 108,000 nights spent were recorded for Swedish visitors, which was 6.7 per cent less than twelve months earlier. Nights spent by visitors from France numbered 103,000 from January to April, which was 4.6 per cent more than in the same period twelve months earlier. Among the most important countries of inbound tourism into Finland, overnight stays of visitors from Japan increased most, or by 18.8 per cent, and 67,000 overnight stays were recorded for them. In contrast, overnight stays by Estonians decreased strongly and in January to April 2013, 59,000 nights were recorded for them, which is as much as 26.1 per cent down on the corresponding period of the year before.

Change in overnight stays in January-April 2013/2012, %



Contents

Tables

Appendix tables

Appendix table 1.1. Capacity and its utilization, April 2013.....	6
Appendix table 1.2. Capacity and its utilization, January-April 2013.....	7
Appendix table 2.1. Nights spend in all establishments, April 2013.....	8
Appendix table 2.2. Nights spend in all establishments, January-April 2013.....	9
Appendix table 3.1. Hotel capacity and capacity utilization, April 2013.....	10
Appendix table 3.2. Hotel capacity and capacity utilization, January-April 2013.....	11
Appendix table 4.1. Nights spend in hotels, April 2013.....	12
Appendix table 4.2. Nights spend in hotels, January-April 2013.....	13
Appendix table 5.1. Visitor arrivals and nights spend by country of residence, April 2013.....	14
Appendix table 5.2. Visitor arrivals and nights spend by country of residence, January-April 2013.....	14
Appendix table 6. Nights spend in all establishments, 2013.....	14

Appendix tables

Appendix table 1.1. Capacity and its utilization, April 2013

Region	Number of establishments	Number of bedrooms	Occupancy rate of bedrooms, %	Change of the occupancy rate compared to previous year, %-units	Average price of nights spend, in euros (incl. VAT 10 %)
Whole country	1,121	58,999	44.0	-1.1	54.43
Mainland Finland	1,081	57,804	44.4	-1.2	54.40
Uusimaa	143	14,586	54.9	-0.9	69.99
Varsinais-Suomi	66	3,725	42.4	-2.3	51.07
Satakunta	41	1,521	35.6	-1.9	60.07
Kanta-Häme	29	1,421	36.2	-2.4	52.67
Pirkanmaa	71	4,394	45.0	-1.5	55.55
Päijät-Häme	34	1,904	37.2	-3.0	48.66
Kymenlaakso	27	1,151	34.5	1.8	52.96
South Karelia	35	1,744	45.2	-1.0	49.42
Etelä-Savo	71	2,082	32.9	2.5	44.75
Pohjois-Savo	49	2,644	43.4	-6.3	53.30
North Karelia	52	1,569	35.4	5.0	51.45
Central Finland	46	2,999	40.2	-9.8	47.02
South Ostrobothnia	51	1,787	39.1	3.7	41.00
Ostrobothnia	28	1,266	44.9	0.6	53.08
Central Ostrobothnia	14	533	46.5	11.5	55.64
North Ostrobothnia	99	4,332	41.4	-3.5	44.36
Kainuu	44	2,156	41.9	-1.8	38.58
Lapland	181	7,990	41.7	1.1	43.98
Åland	40	1,195	23.3	3.3	..

Appendix table 1.2. Capacity and its utilization, January-April 2013

Region	Number of establishments	Number of bedrooms	Occupancy rate of bedrooms, %	Change of the occupancy rate compared to previous year, %-units	Average price of nights spend, in euros (incl. VAT 10 %)
Whole country	1,081	58,254	46.3	-2.0	53.10
Mainland Finland	1,052	57,333	46.7	-2.0	53.10
Uusimaa	141	14,408	55.3	-2.4	67.59
Varsinais-Suomi	60	3,641	41.5	0.0	50.26
Satakunta	37	1,434	35.1	-0.9	59.01
Kanta-Häme	29	1,427	32.8	-4.9	50.06
Pirkanmaa	69	4,369	43.5	-4.9	53.53
Päijät-Häme	33	1,908	40.5	-3.3	47.87
Kymenlaakso	25	1,118	34.8	0.8	49.43
South Karelia	36	1,742	49.2	-0.8	48.13
Etelä-Savo	71	2,103	33.4	0.9	41.10
Pohjois-Savo	47	2,566	46.4	-5.4	49.05
North Karelia	52	1,570	38.0	0.7	46.91
Central Finland	47	2,999	45.1	-6.1	43.77
South Ostrobothnia	49	1,746	37.7	-1.3	41.68
Ostrobothnia	28	1,265	41.7	-3.3	57.47
Central Ostrobothnia	14	543	39.1	2.6	55.48
North Ostrobothnia	97	4,294	44.5	-2.6	44.01
Kainuu	42	2,158	47.8	-1.1	38.39
Lapland	176	8,044	52.4	0.6	49.35
Åland	29	922	19.6	1.7	..

Appendix table 2.1. Nights spend in all establishments, April 2013

Region	Nights spend, total	Change of nights spend, total, %	Nights spend, residents	Change of nights spend, residents, %	Nights spend, non-residents	Change of nights spend, non-residents, %
Whole country	1,348,645	-3.3	1,053,216	-2.2	295,429	-7.3
Mainland Finland	1,331,298	-3.5	1,045,592	-2.4	285,706	-7.3
Uusimaa	344,595	-4.9	198,849	-2.2	145,746	-8.3
Varsinais-Suomi	73,511	-12.9	61,756	-12.5	11,755	-14.7
Satakunta	22,142	-2.7	17,784	-6.1	4,358	14.2
Kanta-Häme	26,181	-3.6	23,166	-5.1	3,015	9.7
Pirkanmaa	98,257	-0.3	84,388	0.4	13,869	-4.2
Päijät-Häme	36,668	-11.4	33,453	-8.2	3,215	-35.0
Kymenlaakso	20,034	10.5	13,257	6.5	6,777	19.3
South Karelia	43,142	3.6	21,101	-5.1	22,041	13.7
Etelä-Savo	34,786	12.9	29,586	13.3	5,200	10.2
Pohjois-Savo	56,702	-5.4	51,210	-5.5	5,492	-4.4
North Karelia	27,135	8.3	23,237	7.6	3,898	12.6
Central Finland	67,209	-17.9	62,067	-9.7	5,142	-61.0
South Ostrobothnia	39,522	11.4	37,415	9.5	2,107	60.4
Ostrobothnia	27,068	1.0	22,792	2.8	4,276	-7.9
Central Ostrobothnia	10,643	12.6	9,825	12.3	818	16.0
North Ostrobothnia	115,387	-0.7	102,606	-0.9	12,781	0.5
Kainuu	75,743	-1.6	73,204	-2.0	2,539	10.4
Lapland	212,573	-3.6	179,896	-2.7	32,677	-8.1
Åland	17,347	9.6	7,624	39.3	9,723	-6.1

Appendix table 2.2. Nights spend in all establishments, January-April 2013

Region	Nights spend, total	Change of nights spend, total, %	Nights spend, residents	Change of nights spend, residents, %	Nights spend, non-residents	Change of nights spend, non-residents, %
Whole country	5,892,643	-1.7	4,099,949	-1.9	1,792,694	-1.3
Mainland Finland	5,848,711	-1.8	4,080,792	-2.1	1,767,919	-1.3
Uusimaa	1,396,998	-5.6	782,097	-5.7	614,901	-5.5
Varsinais-Suomi	279,302	-4.1	233,538	-3.8	45,764	-5.8
Satakunta	83,882	-2.2	66,954	-0.4	16,928	-8.6
Kanta-Häme	100,555	-6.2	86,939	-1.0	13,616	-29.7
Pirkanmaa	400,977	-2.5	343,661	-2.6	57,316	-1.7
Päijät-Häme	182,996	-6.2	153,537	-3.6	29,459	-17.4
Kymenlaakso	78,913	7.9	48,921	-1.7	29,992	28.5
South Karelia	202,721	3.4	87,224	-8.4	115,497	14.4
Etelä-Savo	153,649	9.0	110,859	5.3	42,790	20.3
Pohjois-Savo	264,335	-5.2	220,974	-4.6	43,361	-8.1
North Karelia	128,525	1.0	97,842	4.9	30,683	-9.8
Central Finland	363,313	-4.9	306,508	0.7	56,805	-26.8
South Ostrobothnia	145,633	4.3	136,861	3.8	8,772	11.6
Ostrobothnia	93,087	-6.7	76,327	-3.4	16,760	-19.2
Central Ostrobothnia	38,011	4.4	34,430	2.0	3,581	35.0
North Ostrobothnia	512,436	3.2	407,548	1.9	104,888	8.7
Kainuu	358,202	-1.7	317,027	0.4	41,175	-15.2
Lapland	1,065,176	1.2	569,545	-3.0	495,631	6.6
Åland	43,932	13.1	19,157	31.8	24,775	1.9

Appendix table 3.1. Hotel capacity and capacity utilization, April 2013

Region / municipality	Number of establishments	Number of bedrooms	Occupancy rate of bedrooms, %	Change compared to previous year, %-units	Room price, euros (incl. VAT 10 %)	¹⁾ RevPAR, euros (incl. VAT 10 %)
Whole country	639	50,836	46.9	-1.0	90.64	42.48
Mainland Finland	624	50,038	47.2	-1.1	90.62	42.73
Uusimaa	117	14,214	55.5	-0.8	99.72	55.33
Espoo	12	1,219	53.9	4.2	84.18	45.36
Helsinki	53	8,364	58.4	-1.8	105.45	61.59
Vantaa	11	2,160	62.9	-0.7	101.04	63.55
Varsinais-Suomi	36	3,124	46.1	-3.4	79.11	36.49
Turku	18	2,052	49.4	-0.9	79.90	39.46
Satakunta	24	1,202	40.7	-2.7	84.13	34.24
Pori	9	689	44.6	-0.5	82.89	36.99
Kanta-Häme	18	1,264	38.0	-2.8	85.86	32.62
Hämeenlinna	8	728	37.4	-4.4	94.20	35.25
Pirkanmaa	43	3,801	47.0	-1.9	92.84	43.62
Tampere	24	2,728	53.2	-2.7	96.01	51.09
Päijät-Häme	17	1,724	39.2	-2.7	77.87	30.54
Lahti	7	600	47.6	2.5	85.33	40.65
Kymenlaakso	16	943	38.2	2.9	85.67	32.73
Kouvola	6	428	37.3	0.5	81.62	30.41
South Karelia	18	1,382	50.4	1.4	93.05	46.92
Lappeenranta	7	739	58.2	0.8	87.82	51.11
Etelä-Savo	27	1,518	39.3	4.5	73.15	28.74
Mikkeli	8	559	48.0	7.6	77.97	37.44
Pohjois-Savo	29	2,322	46.2	-4.2	86.23	39.85
Kuopio	14	1,390	51.5	-3.7	91.68	47.23
North Karelia	24	1,287	40.1	6.5	81.41	32.67
Joensuu	9	706	49.8	9.2	82.08	40.88
Central Finland	28	2,671	42.6	-11.5	87.77	37.41
Jyväskylä	10	1,375	48.0	-17.8	92.82	44.54
South Ostrobothnia	28	1,487	45.5	4.9	70.71	32.18
Seinäjoki	8	562	48.2	8.6	80.07	38.62
Ostrobothnia	21	1,209	45.9	0.9	83.80	38.50
Vaasa	8	802	51.4	0.6	85.91	44.19
Central Ostrobothnia	10	498	48.2	11.3	74.39	35.87
Kokkola	5	360	54.3	12.8	77.38	42.05
North Ostrobothnia	49	3,474	43.3	-3.9	86.26	37.37
Kuusamo	11	760	42.0	-8.7	101.48	42.58
Oulu	12	1,584	52.5	-4.4	85.18	44.71
Kainuu	22	1,766	45.1	-2.5	79.68	35.92
Kajaani	6	413	35.6	-1.7	81.03	28.85
Sotkamo	7	1,080	54.1	-4.0	81.39	44.04
Lapland	97	6,152	43.4	1.2	92.56	40.21
Rovaniemi	12	1,223	36.2	2.3	72.24	26.14
Åland	15	798	28.9	5.2
Maarianhamina	7	500	40.0	11.7

1) RevPar = Average accommodation sales revenue per available room. Calculation formula: RevPar = Average room price * Occupancy rate.

Appendix table 3.2. Hotel capacity and capacity utilization, January-April 2013

Region / municipality	Number of establishments	Number of bedrooms	Occupancy rate of bedrooms, %	Change compared to previous year, %-units	Room price, euros (incl. VAT 10 %)	¹⁾ RevPAR, euros (incl. VAT 10 %)
Whole country	631	50,501	49.1	-2.1	92.59	45.42
Mainland Finland	619	49,853	49.4	-2.2	92.59	45.73
Uusimaa	116	14,042	55.9	-2.3	98.86	55.29
Espoo	12	1,219	49.1	-2.7	84.07	41.28
Helsinki	53	8,215	59.6	-2.0	103.46	61.69
Vantaa	11	2,157	66.6	-1.9	101.26	67.46
Varsinais-Suomi	35	3,090	45.3	0.4	78.96	35.78
Turku	18	2,051	46.7	0.1	80.09	37.43
Satakunta	24	1,154	39.8	-1.9	84.25	33.56
Pori	9	642	43.3	0.3	81.68	35.37
Kanta-Häme	18	1,269	34.7	-5.7	86.28	29.97
Hämeenlinna	8	732	35.2	-8.3	93.75	32.96
Pirkanmaa	43	3,803	44.5	-5.8	91.70	40.85
Tampere	24	2,736	49.0	-6.9	94.00	46.10
Päijät-Häme	17	1,735	42.6	-3.4	82.76	35.28
Lahti	7	600	50.9	1.7	88.79	45.19
Kymenlaakso	15	920	38.0	0.6	83.77	31.85
Kouvola	6	426	39.3	-2.4	80.83	31.76
South Karelia	19	1,378	53.4	-1.2	97.56	52.08
Lappeenranta	7	727	61.2	-0.8	91.61	56.10
Etelä-Savo	27	1,539	38.0	1.1	71.11	27.05
Mikkeli	8	559	45.4	0.2	78.50	35.61
Pohjois-Savo	28	2,294	48.4	-4.4	88.09	42.66
Kuopio	14	1,385	55.1	-4.7	92.84	51.16
North Karelia	24	1,295	42.1	0.9	81.65	34.39
Joensuu	9	707	48.6	-0.2	80.78	39.29
Central Finland	28	2,671	47.6	-7.1	99.40	47.30
Jyväskylä	10	1,375	49.3	-12.8	93.65	46.20
South Ostrobothnia	28	1,462	43.6	-0.7	72.46	31.59
Seinäjoki	8	562	48.1	2.5	79.67	38.30
Ostrobothnia	21	1,204	43.1	-3.0	83.81	36.10
Vaasa	8	800	48.0	-4.0	86.95	41.73
Central Ostrobothnia	10	499	40.5	2.2	78.24	31.65
Kokkola	5	361	46.1	2.7	82.45	37.97
North Ostrobothnia	49	3,448	46.6	-2.8	88.90	41.42
Kuusamo	11	750	48.2	-1.6	109.36	52.73
Oulu	12	1,584	54.0	-5.4	85.54	46.19
Kainuu	22	1,767	51.4	-1.7	84.15	43.26
Kajaani	6	415	37.6	-1.8	80.07	30.12
Sotkamo	7	1,080	62.6	-0.9	89.42	56.02
Lapland	97	6,285	56.9	0.6	99.38	56.51
Rovaniemi	12	1,233	62.8	-0.3	95.48	59.96
Åland	12	648	23.4	2.5
Maarianhamina	6	418	31.9	5.8

1) RevPar = Average accommodation sales revenue per available room. Calculation formula: RevPar = Average room price * Occupancy rate.

Appendix table 4.1. Nights spend in hotels, April 2013

Region / municipality	Nights spend, total	Change of nights spend, total, %	Nights spend, residents	Change of nights spend, residents, %	Nights spend, non-residents	Change of nights spend, non-residents, %
Whole country	1,137,969	-3.9	873,545	-2.8	264,424	-7.5
Mainland Finland	1,126,057	-4.2	867,332	-3.1	258,725	-7.6
Uusimaa	330,720	-4.2	190,141	-1.5	140,579	-7.7
Espoo	26,576	0.4	16,227	0.7	10,349	0.0
Helsinki	205,834	-5.8	102,497	-0.7	103,337	-10.4
Vantaa	56,461	-5.2	36,696	-8.6	19,765	2.0
Varsinais-Suomi	65,975	-11.7	55,339	-11.2	10,636	-14.2
Turku	46,659	-8.7	39,350	-4.6	7,309	-25.8
Satakunta	19,461	-1.6	15,684	-2.9	3,777	4.1
Pori	12,108	8.1	9,979	2.5	2,129	45.2
Kanta-Häme	22,265	-5.0	19,341	-6.8	2,924	9.0
Hämeenlinna	12,291	-15.3	10,571	-16.2	1,720	-9.4
Pirkanmaa	84,373	-0.2	72,498	0.9	11,875	-6.5
Tampere	65,773	1.5	55,694	3.3	10,079	-7.5
Päijät-Häme	33,783	-12.7	31,038	-9.6	2,745	-37.2
Lahti	11,683	-12.3	9,492	-4.6	2,191	-35.0
Kymenlaakso	15,637	9.3	9,475	1.5	6,162	24.2
Kouvola	6,509	-0.6	5,057	-7.1	1,452	31.4
South Karelia	38,443	3.9	17,786	-5.9	20,657	14.1
Lappeenranta	22,087	1.2	11,722	-15.5	10,365	30.1
Etelä-Savo	28,665	13.3	25,471	15.0	3,194	1.8
Mikkeli	12,266	18.7	10,146	15.5	2,120	36.7
Pohjois-Savo	50,563	-3.3	47,030	-3.7	3,533	1.6
Kuopio	32,398	3.4	30,057	4.1	2,341	-5.3
North Karelia	23,763	7.5	20,329	7.5	3,434	7.5
Joensuu	14,529	12.6	11,760	16.4	2,769	-0.8
Central Finland	61,919	-19.3	56,895	-11.0	5,024	-60.8
Jyväskylä	28,287	-26.0	24,816	-10.5	3,471	-66.9
South Ostrobothnia	33,853	14.5	32,220	13.9	1,633	28.2
Seinäjoki	10,992	9.1	10,270	10.9	722	-11.1
Ostrobothnia	23,501	0.2	19,241	2.2	4,260	-7.9
Vaasa	17,754	0.8	14,191	0.6	3,563	1.6
Central Ostrobothnia	9,567	23.6	8,875	25.7	692	1.9
Kokkola	7,334	23.9	6,811	27.5	523	-9.2
North Ostrobothnia	79,330	-6.1	69,196	-6.9	10,134	-0.2
Kuusamo	25,179	-13.3	22,291	-13.1	2,888	-14.4
Oulu	36,989	-1.9	31,060	-4.6	5,929	15.1
Kainuu	57,316	1.2	55,061	0.9	2,255	8.5
Kajaani	5,794	-2.2	5,243	-3.6	551	12.7
Sotkamo	48,363	3.6	47,077	3.4	1,286	10.4
Lapland	146,923	-7.6	121,712	-7.4	25,211	-8.4
Rovaniemi	19,577	-0.1	13,766	11.2	5,811	-19.4
Åland	11,912	27.5	6,213	77.7	5,699	-2.5
Maarianhamina	10,038	28.9	5,588	78.8	4,450	-4.5

Appendix table 4.2. Nights spend in hotels, January-April 2013

Region / municipality	Nights spend, total	Change of nights spend, total, %	Nights spend, residents	Change of nights spend, residents, %	Nights spend, non-residents	Change of nights spend, non-residents, %
Whole country	4,998,741	-2.9	3,434,277	-2.9	1,564,464	-2.8
Mainland Finland	4,967,708	-3.0	3,419,197	-3.1	1,548,511	-2.9
Uusimaa	1,347,173	-5.3	752,127	-5.6	595,046	-4.9
Espoo	98,865	-11.3	57,451	-8.9	41,414	-14.6
Helsinki	841,147	-5.3	404,826	-5.6	436,321	-5.0
Vantaa	247,882	-5.2	162,423	-7.7	85,459	-0.2
Varsinais-Suomi	255,426	-3.2	213,921	-2.5	41,505	-6.9
Turku	178,389	-1.5	148,181	-1.1	30,208	-3.3
Satakunta	73,716	-0.2	59,187	4.6	14,529	-15.9
Pori	44,413	8.9	37,121	11.4	7,292	-2.2
Kanta-Häme	87,848	-8.6	75,178	-2.4	12,670	-33.6
Hämeenlinna	49,987	-18.4	42,222	-8.9	7,765	-47.9
Pirkanmaa	329,002	-4.0	281,847	-3.3	47,155	-7.7
Tampere	242,098	-3.1	201,477	-2.3	40,621	-7.0
Päijät-Häme	158,089	-8.7	132,727	-5.6	25,362	-22.2
Lahti	52,896	-13.0	37,571	-9.3	15,325	-21.0
Kymenlaakso	61,837	0.8	38,205	-8.4	23,632	20.4
Kouvola	28,400	-7.6	20,987	-16.6	7,413	32.7
South Karelia	174,433	-0.7	73,127	-10.9	101,306	8.2
Lappeenranta	97,416	-0.3	52,173	-13.1	45,243	20.1
Etelä-Savo	113,492	0.6	92,580	1.7	20,912	-4.2
Mikkeli	48,467	2.6	36,661	-0.2	11,806	12.7
Pohjois-Savo	234,364	-4.9	201,088	-4.2	33,276	-8.9
Kuopio	160,297	-1.4	137,497	0.3	22,800	-10.7
North Karelia	109,501	-3.3	84,878	2.3	24,623	-18.8
Joensuu	58,907	-8.8	44,431	-1.2	14,476	-26.0
Central Finland	335,444	-4.5	282,179	1.0	53,265	-25.7
Jyväskylä	124,953	-10.9	106,929	-1.8	18,024	-42.6
South Ostrobothnia	128,778	2.5	121,439	2.7	7,339	-0.1
Seinäjoki	43,441	-6.0	39,466	-5.8	3,975	-7.8
Ostrobothnia	84,903	-9.0	68,553	-5.6	16,350	-21.0
Vaasa	64,186	-9.6	51,485	-7.8	12,701	-16.2
Central Ostrobothnia	33,472	6.7	31,002	6.4	2,470	10.3
Kokkola	26,078	7.2	24,026	7.7	2,052	2.4
North Ostrobothnia	358,781	0.2	283,122	-0.9	75,659	4.6
Kuusamo	115,673	0.8	85,850	-0.9	29,823	6.2
Oulu	160,430	0.1	132,079	-0.6	28,351	3.7
Kainuu	275,094	1.7	241,829	4.4	33,265	-14.9
Kajaani	27,650	1.4	24,548	4.1	3,102	-16.1
Sotkamo	230,713	4.3	205,382	6.8	25,331	-12.0
Lapland	806,355	-0.4	386,208	-8.2	420,147	8.0
Rovaniemi	161,198	1.3	52,899	-3.7	108,299	3.9
Åland	31,033	20.3	15,080	39.7	15,953	6.3
Maarianhamina	26,081	20.5	13,862	44.2	12,219	1.5

Appendix table 5.1. Visitor arrivals and nights spend by country of residence, April 2013

Country of residence	Visitor arrivals in all accommodation establishments	Nights spend in all accommodation establishments	Change of nights spend in all accommodation establishments, %	Nights spend in hotels	Change of nights spend in hotels, %
Total	714,750	1,348,645	-3.3	1,137,969	-3.9
Finland	559,048	1,053,216	-2.2	873,545	-2.8
Foreign countries	155,702	295,429	-7.3	264,424	-7.5
Sweden	19,367	31,902	-4.9	28,892	-0.6
Germany	10,783	23,065	-19.0	21,145	-20.0
Russia	44,750	72,019	-5.5	62,764	-5.9
United Kingdom	9,774	21,571	3.1	19,528	4.9
United States	5,103	10,645	-8.4	10,448	-6.7
Norway	7,384	14,024	-8.1	11,583	-11.8
Netherlands	3,714	7,516	7.4	6,873	3.7
Italy	2,483	5,664	-15.4	5,207	-18.2
France	3,767	8,555	-17.4	7,502	-17.7
Japan	2,756	5,203	0.3	5,034	0.8
Estonia	4,874	12,293	-20.7	8,344	-22.9
Spain	2,005	5,107	-34.9	4,803	-32.7

Appendix table 5.2. Visitor arrivals and nights spend by country of residence, January-April 2013

Country of residence	Visitor arrivals in all accommodation establishments	Nights spend in all accommodation establishments	Change of nights spend in all accommodation establishments, %	Nights spend in hotels	Change of nights spend in hotels, %
Total	2,958,780	5,892,643	-1.7	4,998,741	-2.9
Finland	2,192,760	4,099,949	-1.9	3,434,277	-2.9
Foreign countries	766,020	1,792,694	-1.3	1,564,464	-2.8
Sweden	66,396	107,559	-6.7	101,324	-3.4
Germany	50,107	137,506	-6.0	126,660	-6.3
Russia	257,721	592,847	0.0	487,152	-3.6
United Kingdom	52,295	151,346	11.4	128,859	9.7
United States	18,153	39,502	-8.6	38,707	-8.0
Norway	24,088	47,398	-0.3	40,504	-2.3
Netherlands	22,497	70,110	3.7	57,932	2.1
Italy	12,084	28,383	-7.3	26,046	-7.0
France	28,658	103,111	4.6	95,070	4.3
Japan	34,436	67,062	18.8	65,435	18.9
Estonia	23,584	59,314	-26.1	46,475	-24.8
Spain	9,708	28,085	5.0	22,123	-8.9

Appendix table 6. Nights spend in all establishments, 2013

Month	Nights spend, total	Change of nights spend, total, %	Nights spend, residents	Change of nights spend, residents, %	Nights spend, non-residents	Change of nights spend, non-residents, %
Total	5,892,643	-1.7	4,099,949	-1.9	1,792,694	-1.3
January	1,362,805	-2.9	754,185	-4.1	608,620	-1.3
February	1,444,001	-1.0	1,022,378	-0.6	421,623	-2.0
March	1,737,192	-0.2	1,270,170	-1.5	467,022	3.7
April	1,348,645	-3.3	1,053,216	-2.2	295,429	-7.3

Suomen virallinen tilasto
Finlands officiella statistik
Official Statistics of Finland

Transport and Tourism 2013

Inquiries

Merja Rönkä 09 1734 3209

Ossi Nurmi 09 1734 2984

Director in charge:

Hannele Orjala

liikenne.matkailu@stat.fi

www.stat.fi

Source: Accommodation Statistics. Statistics Finland