

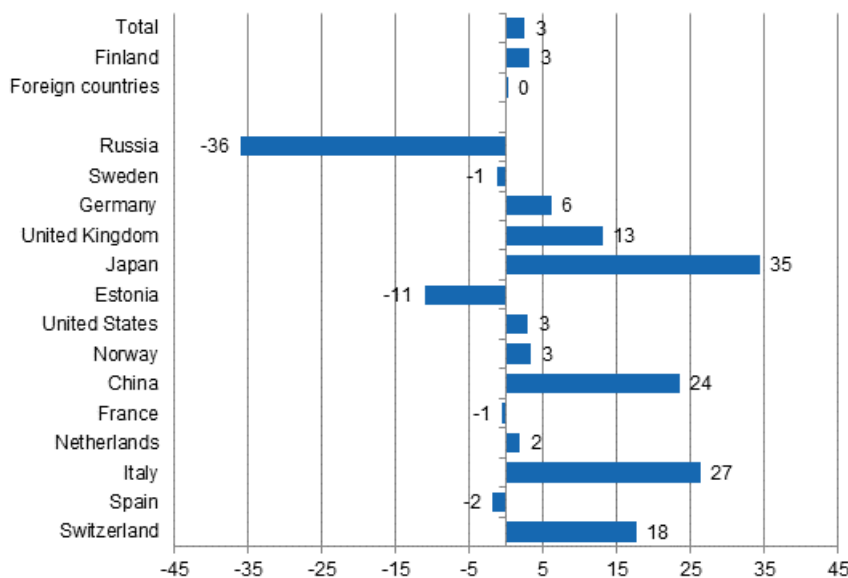
# Accommodation statistics

2015, October

## Overnight stays at accommodation establishments increased by 2.5 per cent in October

The total number of overnight stays at Finnish accommodation establishments was good 1.4 million in October, which was 2.5 per cent more than one year previously. Overnight stays by resident tourists increased by 3.1 per cent and accommodation establishments recorded 1.1 million of them. The number of overnight stays by non-resident tourists at Finnish accommodation establishments remained on level with the previous year and their recorded number of nights spent was 311,000, which was only 0.2 per cent up on October 2014. These figures are preliminary data from Statistics Finland’s statistics on accommodation establishments and they have been collected from accommodation establishments with at least 20 beds or caravan pitches with electricity connection.

### Change in overnight stays in October 2015/2014, %



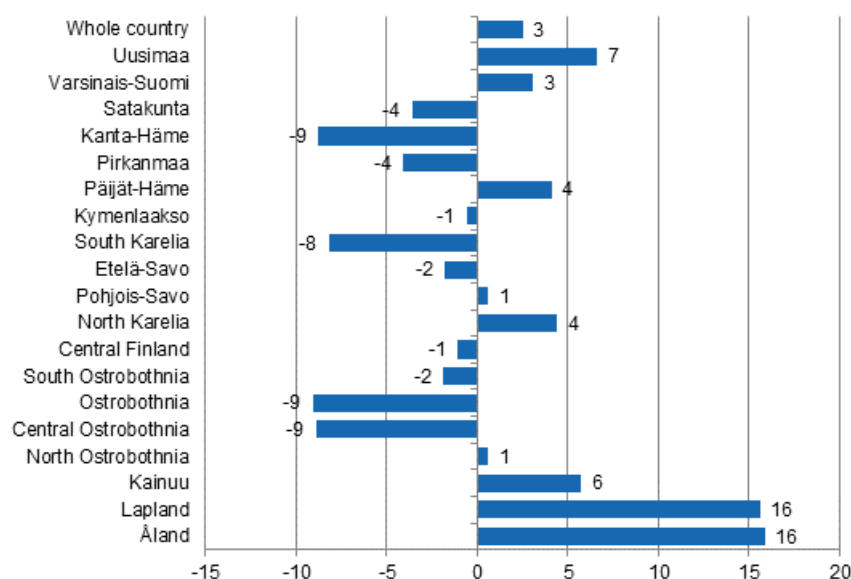
Russians were the largest group of foreign tourists in October with good 34,000 overnight stays. However, this was 36.0 per cent less than in the year before. Swedes came next with nearly 34,000 nights spent,

which was 1.3 per cent lower than twelve months earlier. Germans were in the third position with almost 26,000 overnight stays. The number was 6.1 per cent higher than one year previously. Good 21,000 overnight stays were recorded for British visitors at Finnish accommodation establishments, which was 13.1 per cent more than in October 2014. Among the most important countries of inbound tourism to Finland, overnight stays by Japanese visitors increased most, by 34.5 per cent. A total of nearly 18,000 overnight stays at Finnish accommodation establishments were recorded for them.

Overnight stays by Chinese tourists have increased throughout the year and in October they grew by 23.6 per cent. Overnight stays by Chinese visitors went up to 10,500 nights. Nights spent by visitors from Italy also increased strongly, by 26.5 per cent from last year. Their number of overnight stays was good 7,000. In contrast, overnight stays by Estonian tourists, as those by Russians, continued to decrease strongly in October, to nearly 14,500 nights, which is 11.0 per cent lower than one year earlier.

By region, the total number of overnight stays increased in October most in Åland, up by 15.9 per cent. The number of overnight stays grew by 15.6 per cent in Lapland and by 6.6 per cent in Uusimaa. The biggest decreases in overnight stays were measured in Kanta-Häme, Ostrobothnia and Central Ostrobothnia, around nine per cent in each. In the whole country, overnight stays increased by 2.5 per cent from last year's October.

### Change in overnight stays in October by region 2015 / 2014, %



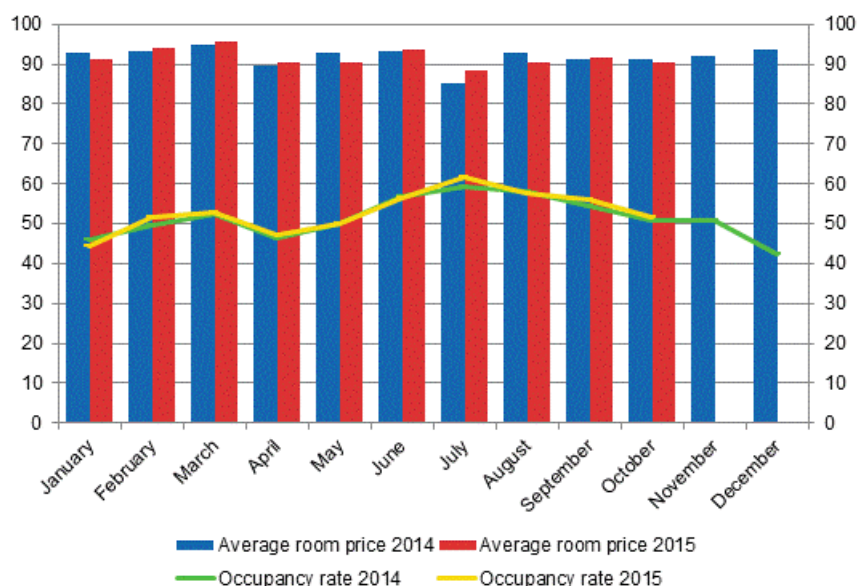
### Overnight stays in hotels increased by 2.3 per cent

In October 2015, the total number of nights spent in hotels was good 1.2 million, which was 2.3 per cent higher than twelve months earlier. Overnight stays by resident tourists increased by 2.5 per cent and hotels recorded nearly 962,000 of them in October 2015. Overnight stays by non-resident tourists grew by 1.7 per cent and hotels recorded 285,000 of them.

The occupancy rate of hotel rooms in the whole country was 51.6 per cent in October. One year earlier, it was 50.9 per cent. Among the regions, the biggest occupancy rate of hotel rooms was measured in Uusimaa, 67.4 per cent. A hotel occupancy rate of 56.2 per cent was recorded in Pirkanmaa. In Varsinais-Suomi, 54.6 per cent of hotel rooms were in use. In Vantaa, the hotel room occupancy rate rose to 74.1 per cent and in Oulu to 65.7 per cent. An occupancy rate of over 60 per cent was also measured in Tampere, where 60.8 per cent of hotel rooms were in use. The hotel room occupancy rate in Helsinki was 74.1 per cent.

In October, the realised average price of a hotel room was EUR 90.38 per day for the whole country. Twelve months previously, it was EUR 91.41.

### Hotel room occupancy rate and the monthly average price



### Total number of nights spent at all accommodation establishments fell by 0.6 per cent in January to October

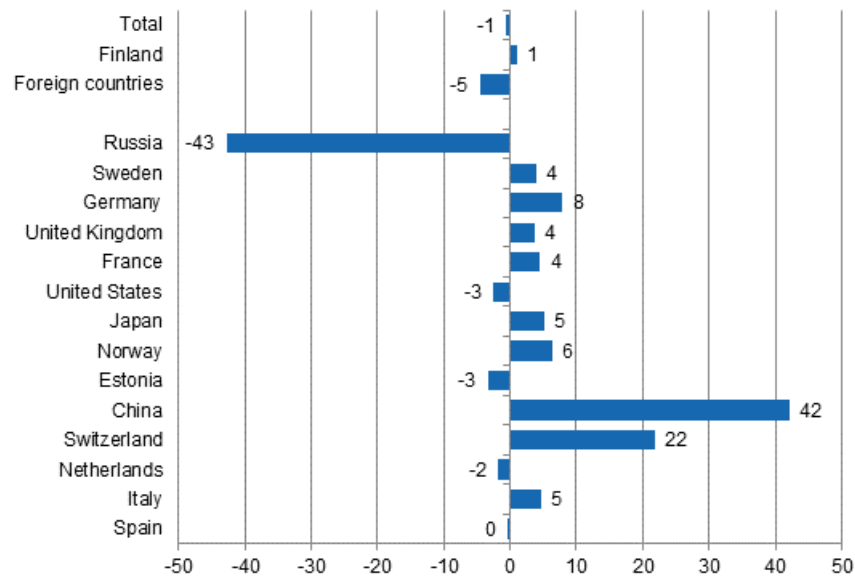
Between January and October 2015, the number of nights spent at accommodation establishments in Finland totalled 17.1 million. This was 0.6 per cent lower than in the corresponding period one year earlier. The number of nights spent by resident tourists increased by one per cent while that of nights spent by foreign tourists decreased by 4.6 per cent. In all, 12.5 million overnight stays were recorded for resident tourists and 4.6 million for non-resident tourists at all accommodation establishments.

Between January and October, the number of nights spent by Russian visitors at accommodation establishments in Finland totalled close on 670,000 overnight stays, which was 42.7 per cent down on the respective time period of last year. Russians still kept their position as the largest group of foreign visitors in January to October, while Swedish visitors came next with 498,000 overnight stays. Overnight stays of Swedes went up by 3.9 per cent. In January to October, nearly 481,000 overnight stays were recorded for German visitors and 299,000 for British ones. The overnight stays of visitors from Germany increased by 7.8 per cent and those of visitors from Great Britain by 3.6 per cent from the previous year's corresponding period.

In January to October, overnight stays by French tourists numbered 186,500, up by 4.4 per cent from the corresponding period of last year. In all, 178,500 overnight stays were recorded at accommodation establishments for visitors from the United States and nearly 171,000 for Japanese ones. Overnight stays by Japanese tourists increased by 5.1 per cent, while those by tourists from the United States decreased by 2.5 per cent from the corresponding period of 2014.

Among the most important countries of inbound tourism to Finland, overnight stays by Chinese visitors increased most, or by 42.2 per cent, during the January to October period. The number of their overnight stays rose almost on level with Estonians. Good 159,000 nights were recorded for Chinese visitors at accommodation establishments and close on 161,000 for Estonians.

**Change in overnight stays in January-October 2015/2014, %**



# Contents

## Tables

### Appendix tables

Appendix table 1.1. Capacity and its utilization, October 2015.....	6
Appendix table 1.2. Capacity and its utilization, January-October 2015.....	7
Appendix table 2.1. Nights spend in all establishments, October 2015.....	8
Appendix table 2.2. Nights spend in all establishments, January-October 2015.....	9
Appendix table 3.1. Hotel capacity and capacity utilization, October 2015.....	10
Appendix table 3.2. Hotel capacity and capacity utilization, January-October 2015.....	11
Appendix table 4.1. Nights spend in hotels, October 2015.....	12
Appendix table 4.2. Nights spend in hotels, January-October 2015.....	13
Appendix table 5.1. Visitor arrivals and nights spend by country of residence, October 2015.....	14
Appendix table 5.2. Visitor arrivals and nights spend by country of residence, January-October 2015.....	14
Appendix table 6. Nights spend in all establishments, 2015.....	15

# Appendix tables

**Appendix table 1.1. Capacity and its utilization, October 2015**

Region	Number of establishments	Number of bedrooms	Occupancy rate of bedrooms, %	Change of the occupancy rate compared to previous year, %-units	Average price of nights spend, in euros (incl. VAT 10 %)
Whole country	1,097	58,408	47.0	0.2	53.98
Mainland Finland	1,055	57,187	47.5	0.2	53.98
Uusimaa	142	14,915	66.3	1.8	67.46
Varsinais-Suomi	67	3,606	49.7	0.2	52.06
Satakunta	41	1,438	39.5	-2.5	53.38
Kanta-Häme	32	1,552	34.6	-6.5	45.33
Pirkanmaa	71	4,390	52.9	-2.6	58.55
Päijät-Häme	34	1,874	43.5	5.1	44.19
Kymenlaakso	29	1,199	39.1	-1.0	49.91
South Karelia	34	1,726	41.4	-3.6	42.18
Etelä-Savo	77	2,158	35.8	2.9	41.79
Pohjois-Savo	50	2,577	45.5	0.2	50.57
North Karelia	51	1,567	40.5	-4.3	48.23
Central Finland	48	3,083	46.6	-4.8	51.29
South Ostrobothnia	44	1,734	44.5	1.5	41.08
Ostrobothnia	29	1,337	43.7	-8.2	61.78
Central Ostrobothnia	14	536	40.1	-8.6	62.31
North Ostrobothnia	96	4,288	42.5	2.0	43.66
Kainuu	45	2,212	42.0	-0.2	22.69
Lapland	151	6,995	22.6	2.8	43.14
Åland	42	1,221	23.2	2.1	1) ..

1) [...] Data too uncertain for presentation.

**Appendix table 1.2. Capacity and its utilization, January-October 2015**

Region	Number of establishments	Number of bedrooms	Occupancy rate of bedrooms, %	Change of the occupancy rate compared to previous year, %-units	Average price of nights spend, in euros (incl. VAT 10 %)
Whole country	1,195	61,229	48.9	0.3	50.41
Mainland Finland	1,142	59,894	49.2	0.2	50.52
Uusimaa	146	15,097	63.5	0.6	63.49
Varsinais-Suomi	75	3,759	50.2	0.2	49.18
Satakunta	42	1,524	42.1	2.5	50.57
Kanta-Häme	33	1,627	34.7	-1.7	45.31
Pirkanmaa	73	4,478	50.4	1.5	51.22
Päijät-Häme	38	2,010	39.9	-3.9	43.07
Kymenlaakso	31	1,199	39.6	-2.9	41.29
South Karelia	38	1,880	45.1	-6.1	42.59
Etelä-Savo	88	2,554	38.8	-1.0	39.53
Pohjois-Savo	53	2,668	47.3	-0.2	45.40
North Karelia	53	1,580	44.9	0.7	47.77
Central Finland	53	3,169	47.8	-0.5	46.77
South Ostrobothnia	47	1,819	44.4	2.2	39.60
Ostrobothnia	34	1,438	46.1	-0.2	46.37
Central Ostrobothnia	16	580	40.4	-3.2	50.97
North Ostrobothnia	101	4,438	47.6	2.4	42.33
Kainuu	47	2,260	43.1	1.5	35.13
Lapland	175	7,815	39.4	-0.1	43.36
Åland	52	1,335	37.8	2.7	1) ..

1) [...] Data too uncertain for presentation.

**Appendix table 2.1. Nights spend in all establishments, October 2015**

Region	Nights spend, total	Change of nights spend, total, %	Nights spend, residents	Change of nights spend, residents, %	Nights spend, non-residents	Change of nights spend, non-residents, %
Whole country	1,415,518	2.5	1,104,853	3.1	310,665	0.2
Mainland Finland	1,400,000	2.4	1,098,456	3.1	301,544	-0.4
Uusimaa	463,343	6.6	277,996	7.1	185,347	5.8
Varsinais-Suomi	90,909	3.1	75,797	2.5	15,112	6.8
Satakunta	27,011	-3.6	23,133	-2.9	3,878	-7.5
Kanta-Häme	28,838	-8.8	26,356	-7.6	2,482	-19.6
Pirkanmaa	117,994	-4.1	102,290	-3.2	15,704	-9.9
Päijät-Häme	48,013	4.1	41,250	2.5	6,763	15.3
Kymenlaakso	23,037	-0.6	18,831	7.3	4,206	-25.2
South Karelia	44,347	-8.2	34,566	6.1	9,781	-37.9
Etelä-Savo	40,006	-1.8	34,243	-0.9	5,763	-7.0
Pohjois-Savo	62,312	0.6	57,787	0.9	4,525	-2.2
North Karelia	36,321	4.4	32,236	9.6	4,085	-24.2
Central Finland	67,651	-1.1	62,630	-0.2	5,021	-10.6
South Ostrobothnia	47,338	-1.9	45,204	-1.8	2,134	-3.1
Ostrobothnia	26,839	-9.1	21,954	-7.2	4,885	-16.9
Central Ostrobothnia	9,967	-8.9	9,242	-6.1	725	-33.6
North Ostrobothnia	102,118	0.6	91,224	0.8	10,894	-0.8
Kainuu	82,346	5.7	79,366	6.2	2,980	-6.9
Lapland	81,610	15.6	64,351	18.2	17,259	7.0
Åland	15,518	15.9	6,397	6.9	9,121	23.1



**Appendix table 2.2. Nights spend in all establishments, January-October 2015**

Region	Nights spend, total	Change of nights spend, total, %	Nights spend, residents	Change of nights spend, residents, %	Nights spend, non-residents	Change of nights spend, non-residents, %
Whole country	17,086,093	-0.6	12,458,429	1.0	4,627,664	-4.6
Mainland Finland	16,687,913	-0.7	12,296,988	0.9	4,390,925	-5.0
Uusimaa	4,605,756	4.5	2,509,848	6.1	2,095,908	2.6
Varsinais-Suomi	1,034,300	-1.1	841,324	0.3	192,976	-6.6
Satakunta	354,833	-0.4	303,583	-1.6	51,250	7.1
Kanta-Häme	312,418	-4.8	279,228	-4.7	33,190	-5.7
Pirkanmaa	1,247,035	3.2	1,069,203	5.2	177,832	-7.5
Päijät-Häme	479,463	-6.8	400,996	-6.4	78,467	-8.7
Kymenlaakso	290,408	-6.6	218,690	0.4	71,718	-23.0
South Karelia	522,099	-12.6	356,255	14.1	165,844	-41.8
Etelä-Savo	620,241	-10.2	489,509	-4.4	130,732	-26.8
Pohjois-Savo	723,168	-1.4	626,448	-0.1	96,720	-9.4
North Karelia	433,572	-0.3	352,121	3.0	81,451	-12.2
Central Finland	860,262	-7.3	746,039	-6.0	114,223	-15.3
South Ostrobothnia	617,517	4.3	593,967	4.4	23,550	1.8
Ostrobothnia	376,455	6.0	302,720	5.0	73,735	10.0
Central Ostrobothnia	131,869	-12.0	117,584	-11.4	14,285	-16.3
North Ostrobothnia	1,356,016	-4.6	1,142,299	-4.8	213,717	-3.8
Kainuu	837,776	1.1	771,123	3.0	66,653	-16.6
Lapland	1,884,725	-1.2	1,176,051	-1.8	708,674	-0.0
Åland	398,180	6.0	161,441	10.8	236,739	3.0

**Appendix table 3.1. Hotel capacity and capacity utilization, October 2015**

Region / municipality	Number of establishments	Number of bedrooms	Occupancy rate of bedrooms, %	Change compared to previous year, %-units	Room price, euros (incl. VAT 10 %)	<sup>1)</sup> RevPAR, euros (incl. VAT 10 %)
Whole country	600	49,858	51.6	0.7	90.38	46.59
Mainland Finland	585	49,022	51.9	0.7	90.39	46.89
Uusimaa	113	14,500	67.4	2.3	101.47	68.36
Espoo	12	1,239	56.8	1.0	79.84	45.36
Helsinki	53	8,728	74.1	2.4	105.92	78.53
Vantaa	11	2,237	74.1	3.4	102.78	76.17
Varsinais-Suomi	37	2,925	54.6	-0.2	86.01	46.95
Turku	18	1,984	59.2	0.8	87.89	52.04
Satakunta	25	1,138	46.2	-3.8	83.41	38.56
Pori	9	659	47.3	-7.0	82.59	39.04
Kanta-Häme	18	1,339	38.6	-6.2	75.44	29.10
Hämeenlinna	8	721	38.1	-7.5	85.06	32.43
Pirkanmaa	41	3,834	56.2	-2.9	99.04	55.65
Tampere	25	2,952	60.8	-5.5	99.99	60.81
Päijät-Häme	14	1,682	45.6	4.3	80.88	36.88
Lahti	5	559	58.0	8.3	88.10	51.06
Kymenlaakso	17	938	43.7	2.1	83.41	36.46
Kouvola	7	440	39.3	-0.2	80.23	31.52
South Karelia	14	1,254	47.3	-1.1	89.04	42.08
Lappeenranta	8	805	53.1	-7.0	84.49	44.88
Etelä-Savo	28	1,526	41.4	3.2	69.21	28.64
Mikkeli	8	555	53.1	7.1	69.20	36.72
Pohjois-Savo	29	2,338	46.8	0.1	89.63	41.95
Kuopio	16	1,434	46.7	-1.8	88.88	41.50
North Karelia	21	1,237	46.1	-3.8	83.71	38.62
Joensuu	6	601	59.3	-7.9	85.77	50.83
Central Finland	27	2,708	49.9	-5.0	76.64	38.23
Jyväskylä	11	1,362	56.1	-2.4	88.34	49.55
South Ostrobothnia	23	1,505	49.0	1.1	75.13	36.80
Seinäjoki	7	606	50.9	2.0	83.03	42.23
Ostrobothnia	22	1,230	47.0	-6.4	87.10	40.96
Vaasa	8	795	53.6	-5.9	88.78	47.59
Central Ostrobothnia	9	478	42.3	-8.8	86.94	36.80
Kokkola	5	361	49.2	-8.9	91.69	45.13
North Ostrobothnia	50	3,328	48.6	2.8	82.16	39.89
Kuusamo	10	757	23.4	2.6	75.80	17.74
Oulu	12	1,426	65.7	2.6	90.02	59.11
Kainuu	20	1,770	46.0	-0.3	59.62	27.44
Kajaani	6	414	36.9	-1.0	83.27	30.75
Sotkamo	6	1,100	55.9	0.1	52.88	29.57
Lapland	77	5,292	26.2	4.4	79.13	20.69
Rovaniemi	13	1,322	38.1	0.2	74.04	28.18
Åland	15	836	29.7	3.2	..	..
Maarianhamina	7	516	44.0	4.3	..	..

1) RevPar = Average accommodation sales revenue per available room. Calculation formula: RevPar = Average room price \* Occupancy rate.[...] Data too uncertain for presentation.

**Appendix table 3.2. Hotel capacity and capacity utilization, January-October 2015**

Region / municipality	Number of establishments	Number of bedrooms	Occupancy rate of bedrooms, %	Change compared to previous year, %-units	Room price, euros (incl. VAT 10 %)	<sup>1)</sup> RevPAR, euros (incl. VAT 10 %)
Whole country	617	50,913	53.1	0.6	91.53	48.56
Mainland Finland	602	50,111	53.2	0.6	91.50	48.64
Uusimaa	113	14,497	64.5	1.0	100.16	64.65
Espoo	12	1,234	55.6	-0.2	81.60	45.35
Helsinki	52	8,677	70.0	1.1	105.35	73.74
Vantaa	11	2,236	69.8	0.8	97.39	68.01
Varsinais-Suomi	39	2,982	55.0	-0.0	86.80	47.76
Turku	19	2,023	58.3	-0.6	88.89	51.80
Satakunta	25	1,171	48.1	3.2	86.53	41.63
Pori	9	653	50.2	2.6	88.79	44.61
Kanta-Häme	18	1,338	39.5	-1.2	74.85	29.60
Hämeenlinna	8	709	39.2	-0.1	85.31	33.42
Pirkanmaa	41	3,775	53.6	1.8	95.47	51.13
Tampere	25	2,933	57.2	0.8	97.17	55.54
Päijät-Häme	15	1,750	42.4	-4.1	81.34	34.52
Lahti	6	635	48.8	2.5	86.91	42.40
Kymenlaakso	17	930	42.7	-0.8	85.33	36.43
Kouvola	7	436	42.3	0.2	80.92	34.23
South Karelia	17	1,406	49.0	-7.2	89.43	43.83
Lappeenranta	8	802	58.3	-5.6	81.47	47.47
Etelä-Savo	31	1,735	43.2	-0.2	79.79	34.43
Mikkeli	8	576	49.6	1.2	80.17	39.75
Pohjois-Savo	30	2,324	49.0	0.1	86.93	42.62
Kuopio	16	1,420	53.1	-0.5	90.59	48.08
North Karelia	22	1,222	49.7	0.8	88.59	44.02
Joensuu	7	626	59.9	0.2	89.43	53.53
Central Finland	28	2,726	51.1	-1.0	84.67	43.26
Jyväskylä	12	1,434	54.8	-1.1	91.43	50.06
South Ostrobothnia	23	1,486	50.3	1.8	77.57	39.01
Seinäjoki	7	580	53.7	1.7	85.61	45.97
Ostrobothnia	22	1,243	49.9	0.4	87.43	43.66
Vaasa	8	802	57.2	1.8	89.33	51.13
Central Ostrobothnia	9	486	43.0	-3.4	84.54	36.35
Kokkola	5	369	48.9	-4.8	86.17	42.10
North Ostrobothnia	49	3,360	53.4	4.4	83.97	44.85
Kuusamo	10	761	37.5	1.4	87.54	32.85
Oulu	12	1,469	67.7	6.7	88.58	59.96
Kainuu	20	1,774	47.1	0.9	76.04	35.79
Kajaani	6	414	40.6	3.2	77.90	31.64
Sotkamo	6	1,104	54.1	0.4	76.12	41.16
Lapland	85	5,909	43.5	0.8	90.60	39.44
Rovaniemi	13	1,278	53.0	-0.2	84.35	44.73
Åland	15	802	46.1	3.2	..	..
Maarianhamina	7	490	59.6	4.2	..	..

1) RevPar = Average accommodation sales revenue per available room. Calculation formula: RevPar = Average room price \* Occupancy rate.[...] Data too uncertain for presentation.

**Appendix table 4.1. Nights spend in hotels, October 2015**

Region / municipality	Nights spend, total	Change of nights spend, total, %	Nights spend, residents	Change of nights spend, residents, %	Nights spend, non-residents	Change of nights spend, non-residents, %
Whole country	1,246,869	2.3	961,867	2.5	285,002	1.7
Mainland Finland	1,235,310	2.2	956,672	2.5	278,638	1.3
Uusimaa	445,391	6.9	266,245	6.8	179,146	7.2
Espoo	30,654	8.4	19,505	23.3	11,149	-10.6
Helsinki	291,826	8.0	153,994	4.8	137,832	11.9
Vantaa	78,139	8.0	54,300	12.9	23,839	-1.7
Varsinais-Suomi	78,767	2.2	65,980	1.4	12,787	6.4
Turku	57,176	4.5	46,582	2.3	10,594	15.9
Satakunta	22,992	-10.2	19,533	-9.7	3,459	-12.7
Pori	14,215	-10.9	12,686	-7.6	1,529	-31.5
Kanta-Häme	26,001	-8.0	23,531	-6.8	2,470	-18.2
Hämeenlinna	13,944	-15.0	12,731	-11.0	1,213	-42.3
Pirkanmaa	107,097	-4.1	92,527	-3.9	14,570	-5.3
Tampere	84,575	-2.1	71,031	-1.1	13,544	-7.0
Päijät-Häme	42,233	4.5	36,224	3.8	6,009	8.8
Lahti	14,293	6.8	10,214	0.0	4,079	28.7
Kymenlaakso	16,077	-8.8	12,849	-1.2	3,228	-30.1
Kouvola	7,646	-2.2	6,738	1.4	908	-22.5
South Karelia	35,077	-13.4	27,037	1.6	8,040	-42.1
Lappeenranta	24,621	-6.9	20,239	3.3	4,382	-36.1
Etelä-Savo	28,906	-5.3	26,312	-5.7	2,594	-1.7
Mikkeli	12,735	10.0	11,187	8.4	1,548	22.6
Pohjois-Savo	55,087	-1.4	51,248	-2.1	3,839	9.7
Kuopio	32,899	-3.5	30,800	-4.0	2,099	5.0
North Karelia	29,648	3.7	26,054	7.6	3,594	-17.9
Joensuu	15,640	-8.2	13,618	1.2	2,022	-43.4
Central Finland	61,409	-2.8	56,732	-1.7	4,677	-14.6
Jyväskylä	34,756	-5.8	31,463	-5.2	3,293	-10.4
South Ostrobothnia	39,750	-1.4	38,017	-1.9	1,733	11.1
Seinäjoki	13,150	-0.2	12,045	-0.6	1,105	4.0
Ostrobothnia	25,265	-9.0	20,460	-6.8	4,805	-17.1
Vaasa	18,045	-10.9	14,052	-10.1	3,993	-13.6
Central Ostrobothnia	8,364	-12.5	7,777	-10.8	587	-30.8
Kokkola	7,090	-8.8	6,621	-7.1	469	-27.5
North Ostrobothnia	81,500	0.6	71,856	0.4	9,644	2.3
Kuusamo	13,174	6.2	12,534	14.2	640	-55.4
Oulu	43,820	-6.8	38,452	-4.8	5,368	-18.7
Kainuu	67,091	10.3	64,513	10.9	2,578	-2.5
Kajaani	6,660	5.4	6,211	4.3	449	22.7
Sotkamo	58,658	10.5	56,684	11.4	1,974	-9.4
Lapland	64,655	21.0	49,777	24.1	14,878	11.8
Rovaniemi	23,602	18.8	17,926	28.8	5,676	-4.6
Åland	11,559	15.4	5,195	8.2	6,364	22.1
Maarianhamina	9,613	13.9	4,615	8.5	4,998	19.3

**Appendix table 4.2. Nights spend in hotels, January-October 2015**

Region / municipality	Nights spend, total	Change of nights spend, total, %	Nights spend, residents	Change of nights spend, residents, %	Nights spend, non-residents	Change of nights spend, non-residents, %
Whole country	13,476,871	0.6	9,672,072	2.7	3,804,799	-4.3
Mainland Finland	13,268,678	0.5	9,576,719	2.6	3,691,959	-4.7
Uusimaa	4,282,467	4.4	2,311,737	6.4	1,970,730	2.2
Espoo	308,900	4.8	192,996	17.7	115,904	-11.4
Helsinki	2,776,461	4.9	1,276,501	4.1	1,499,960	5.6
Vantaa	720,321	3.8	448,512	9.7	271,809	-4.6
Varsinais-Suomi	813,326	-1.0	661,902	0.7	151,424	-7.8
Turku	573,904	-1.8	464,199	0.4	109,705	-9.9
Satakunta	244,113	0.6	199,471	-1.5	44,642	11.4
Pori	146,896	0.9	125,596	-0.6	21,300	10.7
Kanta-Häme	264,480	-0.5	233,538	-0.4	30,942	-1.2
Hämeenlinna	140,544	-3.6	125,765	-0.1	14,779	-25.6
Pirkanmaa	1,017,776	4.4	870,213	6.5	147,563	-6.4
Tampere	807,673	7.0	671,014	9.4	136,659	-3.4
Päijät-Häme	383,792	-5.8	320,057	-5.8	63,735	-5.7
Lahti	132,979	-5.5	96,219	-7.9	36,760	1.6
Kymenlaakso	172,230	-11.7	130,165	-4.5	42,065	-28.5
Kouvola	84,777	-5.7	70,028	1.0	14,749	-28.0
South Karelia	400,514	-15.3	275,251	14.0	125,263	-45.9
Lappeenranta	258,491	-6.9	200,013	14.5	58,478	-43.2
Etelä-Savo	374,215	-5.6	324,643	-1.3	49,572	-26.5
Mikkeli	138,748	-0.9	115,530	4.8	23,218	-22.0
Pohjois-Savo	592,113	-0.6	528,743	1.1	63,370	-13.1
Kuopio	387,910	0.5	347,667	3.1	40,243	-17.3
North Karelia	310,417	0.8	259,100	7.4	51,317	-23.0
Joensuu	164,179	0.0	133,902	9.5	30,277	-27.6
Central Finland	724,661	-7.1	622,845	-5.2	101,816	-16.9
Jyväskylä	359,561	-4.3	306,736	-3.0	52,825	-11.7
South Ostrobothnia	427,849	2.3	411,090	2.6	16,759	-3.9
Seinäjoki	140,763	0.1	130,182	-0.2	10,581	4.0
Ostrobothnia	281,064	3.1	223,631	4.2	57,433	-1.1
Vaasa	208,537	1.9	160,409	1.7	48,128	2.9
Central Ostrobothnia	91,522	-10.0	84,219	-8.2	7,303	-26.4
Kokkola	76,894	-8.0	70,643	-6.4	6,251	-23.3
North Ostrobothnia	913,851	1.5	758,152	1.8	155,699	-0.2
Kuusamo	199,270	0.9	163,903	6.9	35,367	-20.1
Oulu	465,664	1.6	387,949	4.4	77,715	-10.4
Kainuu	630,026	4.2	587,363	6.8	42,663	-21.5
Kajaani	74,404	6.7	67,082	6.8	7,322	5.0
Sotkamo	522,098	4.5	494,560	7.5	27,538	-30.4
Lapland	1,344,262	-0.4	774,599	-1.0	569,663	0.4
Rovaniemi	338,041	9.4	167,490	18.5	170,551	1.8
Åland	208,193	12.1	95,353	13.9	112,840	10.7
Maarianhamina	148,407	18.0	75,462	16.8	72,945	19.3

**Appendix table 5.1. Visitor arrivals and nights spend by country of residence, October 2015**

Country of residence	Visitor arrivals in all accommodation establishments	Nights spend in all accommodation establishments	Change of nights spend in all accommodation establishments, %	Nights spend in hotels	Change of nights spend in hotels, %
Total	816,445	1,415,518	2.5	1,246,869	2.3
Finland	652,531	1,104,853	3.1	961,867	2.5
Foreign countries	163,914	310,665	0.2	285,002	1.7
Sweden	21,782	33,637	-1.3	31,959	-1.5
Germany	12,417	25,788	6.1	23,830	8.0
Russia	20,168	34,494	-36.0	28,122	-37.2
United Kingdom	11,321	21,434	13.1	21,074	16.6
United States	6,267	13,036	2.9	12,710	2.9
Norway	6,454	11,534	3.4	10,840	4.5
Netherlands	3,952	7,666	1.8	7,516	9.7
Italy	3,300	7,353	26.5	6,947	30.8
France	3,785	8,342	-0.6	7,773	2.1
Japan	9,345	17,630	34.5	17,312	36.0
Estonia	6,418	14,486	-11.0	10,521	-11.8
Switzerland	2,268	4,824	17.8	4,324	14.9
Spain	2,360	5,218	-1.9	4,920	1.8
China	6,964	10,507	23.6	10,292	24.1

**Appendix table 5.2. Visitor arrivals and nights spend by country of residence, January-October 2015**

Country of residence	Visitor arrivals in all accommodation establishments	Nights spend in all accommodation establishments	Change of nights spend in all accommodation establishments, %	Nights spend in hotels	Change of nights spend in hotels, %
Total	9,297,761	17,086,093	-0.6	13,476,871	0.6
Finland	7,070,060	12,458,429	1.0	9,672,072	2.7
Foreign countries	2,227,701	4,627,664	-4.6	3,804,799	-4.3
Sweden	278,635	498,329	3.9	382,732	6.2
Germany	241,140	480,787	7.8	392,039	10.4
Russia	301,212	669,932	-42.7	483,932	-44.4
United Kingdom	128,767	299,142	3.6	263,832	4.3
United States	83,818	178,506	-2.5	172,096	-2.2
Norway	83,893	166,421	6.3	125,158	3.1
Netherlands	64,001	139,252	-1.8	111,023	0.9
Italy	51,634	105,234	4.6	93,351	6.9
France	73,646	186,515	4.4	162,225	5.2
Japan	91,871	170,933	5.1	166,368	5.8
Estonia	70,163	160,688	-3.4	110,944	-6.3
Switzerland	63,664	141,077	21.9	104,864	22.0
Spain	40,668	84,663	-0.3	75,372	3.4
China	108,853	159,273	42.2	155,325	43.6

**Appendix table 6. Nights spend in all establishments, 2015**

Month	Nights spend, total	Change of nights spend, total, %	Nights spend, residents	Change of nights spend, residents, %	Nights spend, non-residents	Change of nights spend, non-residents, %
Total	17,086,093	-0.6	12,458,429	1.0	4,627,664	-4.6
January	1,274,285	-8.0	785,974	2.6	488,311	-21.1
February	1,449,132	1.7	1,054,409	3.2	394,723	-2.1
March	1,574,430	-3.1	1,161,442	-0.5	412,988	-9.6
April	1,344,492	-0.4	1,055,057	0.8	289,435	-4.4
May	1,347,855	-0.2	960,880	1.0	386,975	-3.2
June	2,019,083	-2.9	1,496,914	-1.6	522,169	-6.6
July	2,945,547	0.3	2,193,231	-1.3	752,316	5.3
August	2,147,306	0.1	1,487,622	2.7	659,684	-5.4
September	1,568,445	3.9	1,158,047	3.2	410,398	5.8
October	1,415,518	2.5	1,104,853	3.1	310,665	0.2

### Inquiries

Marjut Tuominen 029 551 3556

Kari Keränen 029 551 3208

Director in charge:

Mari Ylä-Jarkko

[liikenne.matkailu@stat.fi](mailto:liikenne.matkailu@stat.fi)

[www.stat.fi](http://www.stat.fi)

Source: Accommodation Statistics. Statistics Finland