

Accommodation statistics 2017

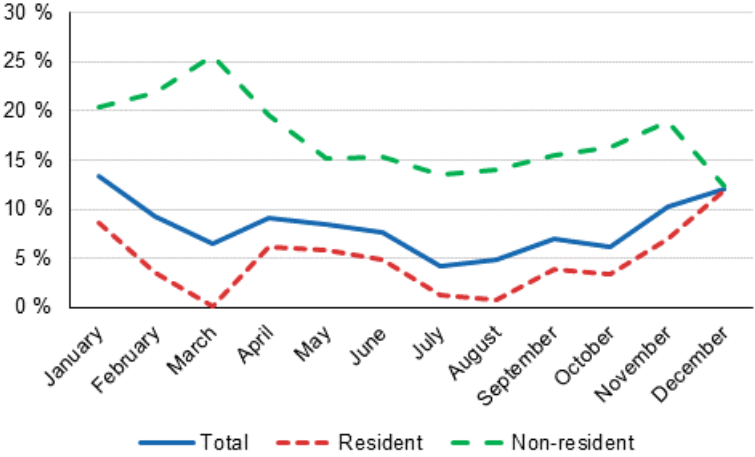
Demand for accommodation services rose to record figures in 2017

In 2017, accommodation establishments in Finland had a record number of nearly 22 million overnight stays, of which domestic tourists accounted for around 15.2 million and foreign tourists for good 6.7 million. The foreign demand for accommodation services grew by 16.8 per cent and the domestic demand by 4.1 per cent compared with the previous year. In all, total demand for accommodation services grew by 7.7 per cent in 2017.

The target group of the accommodation statistics has been reviewed and a few accommodation establishments operating in the industries of hotels and hostels were added to it starting from data concerning January 2017. The effect of the review is around 2.5 per cent of the total number of overnight stays from 2017 onwards. Because of the review, the data starting from 2017 are not fully comparable with those for earlier years.

The demand for accommodation services made a clear upturn in 2016 that continued as strong in 2017. Demand grew in every month of the year. In May and June, growth was around eight per cent, in February and April around nine per cent, and in November ten per cent. The biggest growth percentages came in December and January when growth amounted to as much as 12 to 13 per cent compared to 2016. In the remaining months, the demand for accommodation services grew by four to seven per cent. These figures are data from Statistics Finland's statistics on accommodation establishments and they have been collected from accommodation establishments with at least 20 beds or caravan pitches with electricity connection.

Year-on-year changes in nights spent (%) by month 2017/2016



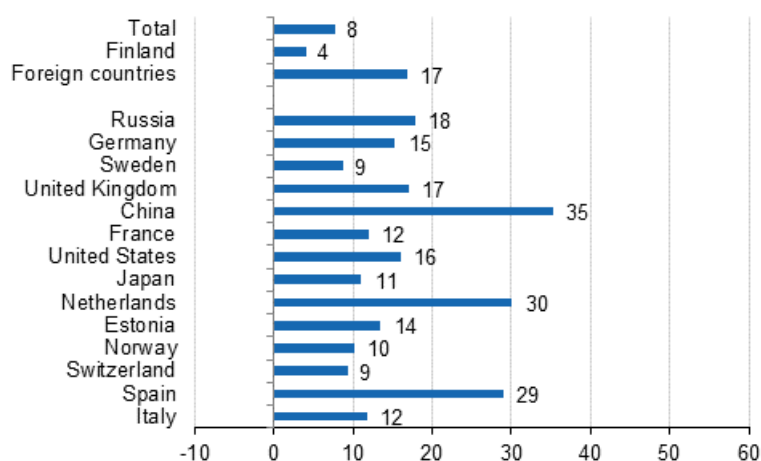
Russians still formed the largest group of foreign visitors in accommodation establishments in 2017

Russians were still the largest group of foreign tourists in Finnish accommodation establishments in 2017. Nearly 822,000 overnight stays were recorded for Russians, which was 17.8 per cent more than in the year before. The share of Russians among all overnight stays by foreign tourists remained at 12 per cent in 2017 just like in 2016. Germans came second with some 623,000 overnight stays. Their overnight stays increased by 15.3 per cent year-on-year. Swedish and British visitors came next after Germans. For Swedish and British visitors, the number of overnight stays was just shy of 600,000 for both. The number of nights spent by Swedish tourists grew by 8.7 per cent and nights spent by British tourists by 17.0 per cent compared to 2016.

Among the most important countries of inbound tourism to Finland, the biggest growth percentage came from China, 35.3 per cent. Altogether, 313,000 overnight stays were recorded for Chinese tourists, which made them the fifth largest group after British tourists. Overnight stays recorded for French visitors increased by 12 per cent and totalled 280,000. Visitors from the United States spent 16 per cent more nights in Finland and their overnight stays amounted to 270,000. Overnight stays by Japanese tourists increased by 11.1 per cent and they had around 238,000 overnight stays in 2017. Estonian tourists had nearly 220,000 overnightings and Norwegian visitors slightly under 200,000. Overnight stays by Estonian visitors increased by 13.5 per cent, and those by visitors from Norway by 10.2 per cent. Travelling to Finland from all the major tourist countries grew clearly in 2017.

Examined by continent, Asia exceeded the one million mark for overnight stays for the first time in 2017. Overnight stays by Chinese and Japanese tourists covered slightly more than one-half of the stays by Asians and pushed the overnight stays to a growth of nearly 23 per cent. In total, Finnish accommodation establishments recorded nearly 1.1 million overnight stays for visitors from Asia, surpassing the Nordic countries from where 930,000 overnight stays were recorded. In all, 16.9 per cent more overnight stays were recorded for visitors from EU countries than in 2016, while the number of nights rose to close on 3.6 million. Tourism from America increased by 14.5 per cent and overnight stays amounted to almost 379,000. After the small drop in 2016, tourism from Africa made a 17 per cent upturn in 2017 and around 28,000 overnight stays were recorded for visitors from Africa.

Change in overnight stays 2017 / 2016, %



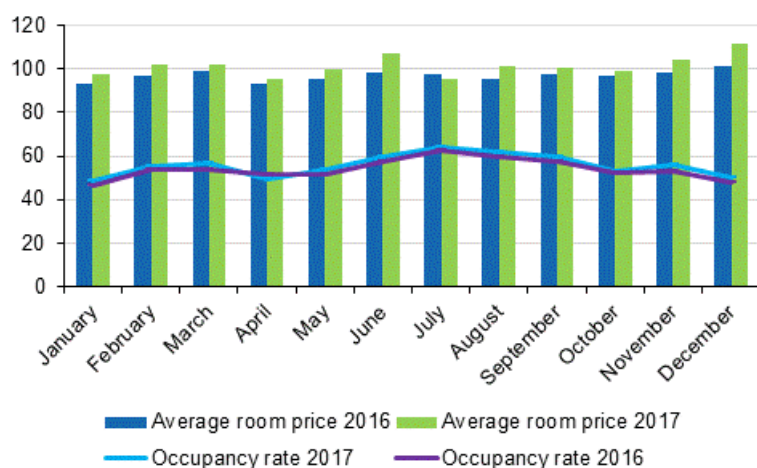
Number of nights spent at hotels totalled almost 17.5 million in 2017

In 2017, the total number of nights spent at hotels was almost 17.5 million, which was seven per cent higher than in 2016. In total, 11.8 million overnight stays were recorded for resident tourists and close on 5.7 million for non-resident tourists. The overnight stays of resident visitors increased by 3.6 per cent and those of non-resident visitors by 14.9 per cent from 2016. Overnight stays at hotels covered almost 80 per

cent of all overnight stays at accommodation establishments. The share of foreign tourists of overnight stays in hotels was 32 per cent and 31 per cent of all overnight stays at accommodation establishments.

The occupancy rate of hotel rooms for the whole country was 55.9 per cent in 2017. One year earlier, it was 54.0 per cent. The average price of a hotel room has been growing since 2011, when the average price was EUR 88. In 2017, the average price of a hotel room was EUR 101.

Hotel room occupancy rate and the monthly average price in 2016 and 2017



Regional development of overnight stays in 2017

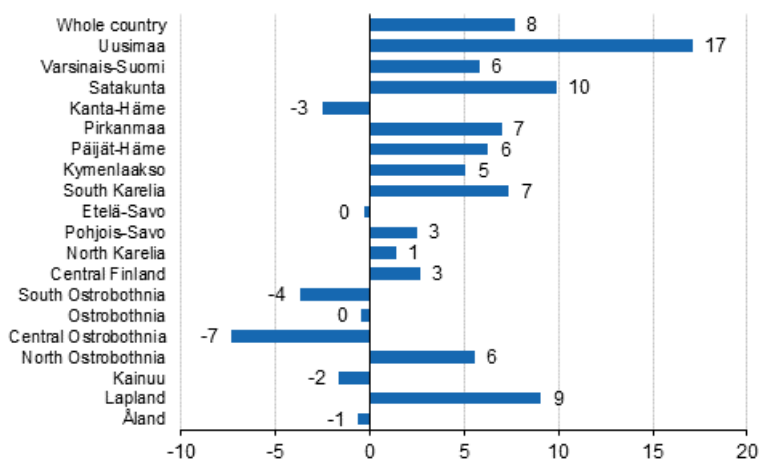
In Mainland Finland, the growth in overnight stays was in 2017 biggest in Uusimaa, where 17.1 per cent more overnight stays were recorded than in 2016. In Satakunta and Lapland, overnight stays increased by nine to ten per cent. In Pirkanmaa and South Karelia, overnight stays increased by some seven per cent and in Varsinais-Suomi, Päijät-Häme and North Ostrobothnia by around six per cent in each. In Uusimaa, Satakunta and Lapland, the capacity of accommodation establishments grew somewhat, while in Pirkanmaa and South Karelia, the capacity diminished. In addition, overnight stays increased by five per cent in Kymenlaakso and by around three per cent in Pohjois-Savo and Central Finland. In the regions of Etelä-Savo and Ostrobothnia, overnight stays remained almost on level with the previous year. In all other regions, the numbers of overnight stays went down last year. The biggest drop in overnight stays was recorded in the region of Central Ostrobothnia, 7.3 per cent. In South Ostrobothnia, overnight stays decreased by 3.7 per cent and in Kanta-Häme by 2.5 per cent. In Kainuu, 1.6 per cent fewer overnight stays were recorded than in 2016.

In Åland, overnight stays decreased by 0.6 per cent from the year before.

In absolute numbers, overnight stays in accommodation establishments increased most in Uusimaa, where nearly 940,000 more overnight stays were recorded, and in Lapland, where overnight stays grew by 242,000 from 2016.

In Mainland Finland, the share of overnight stays by foreign visitors in all overnight stays was 47 per cent in the region of Uusimaa, and 51 per cent in Lapland. In South Karelia, the share of foreign visitors was nearly 33 per cent and in Etelä-Savo and Ostrobothnia some 22 to 24 per cent. In Päijät-Häme, Kymenlaakso and Varsinais-Suomi, the shares were 19 to 20 per cent. In Uusimaa, Russians barely managed to maintain their top position among all tourists. Accommodation establishments recorded around 259,000 overnight stays for them. In Lapland, the biggest group of foreign visitors were British tourists for whom nearly 274,000 overnight stays were recorded. In South Karelia, Etelä-Savo, Päijät-Häme and Kymenlaakso, Russians were the biggest group of foreign tourists while in Ostrobothnia, Swedes took the first position. In Varsinais-Suomi, Swedish and German visitors shared the first place.

Change in overnight stays by region 2016/2015,%

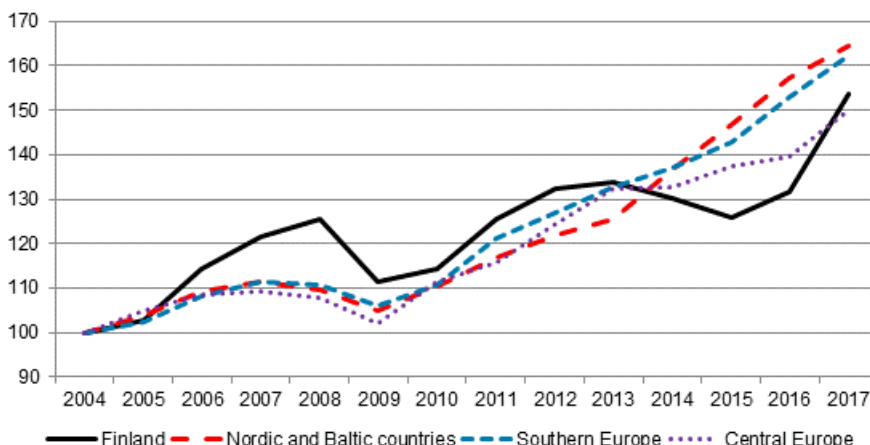


Overnight stays by foreign visitors grew in Finland by more than double compared to elsewhere in Europe in 2017

In 2017, overnight stays by foreign visitors in Europe grew by 6.7 per cent. The 16.8 per cent growth in overnight stays by foreign visitors in Finland was exceptionally high compared to other European countries. In our neighbouring regions, the Nordic and Baltic countries, overnight stays by foreign visitors increased by 4.6 per cent, in Central Europe, the growth amounted to 7.5 per cent and in Southern Europe to 6.2 per cent. In Europe, overnight stays by foreign visitors have grown for the past eight years by an average of 5.3 per cent per year. In Finland, the development of overnight stays by foreigners was negative in 2014 to 2015.

In a long-term examination of overnight stays by foreign visitors starting from 2004, Finland surpassed Central European countries in 2017. Overnight stays by foreign visitors in the Nordic and Baltic countries and in Southern European countries have, however, grown faster than overnight stays in Finland in the long term.

Nights spent by non-residents in Europe (2004 = 100)



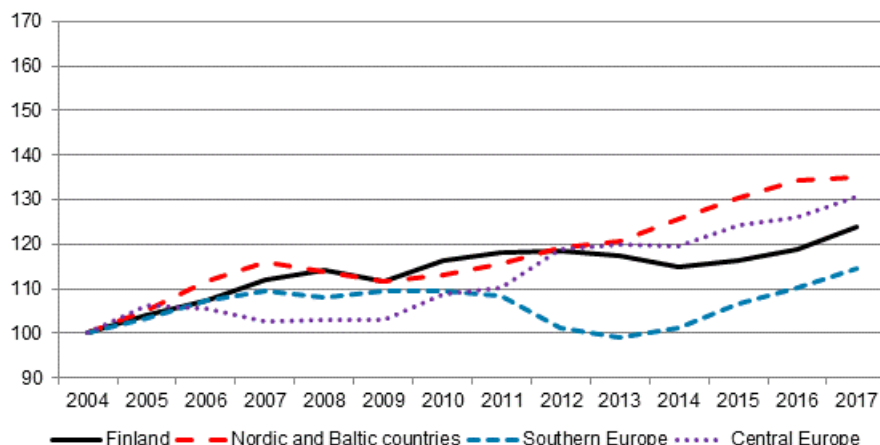
Domestic overnight stays grew in Finland at the same rate as in other European countries in 2017

Domestic overnight stays grew in Finland by 4.1 per cent and in Europe by 3.6 per cent in 2017. The growth in domestic overnight stays was especially modest in our neighbouring regions, the Nordic and

Baltic countries, where the growth in domestic overnight stays remained at 0.6 per cent. In Central Europe, domestic overnight stays grew by 3.7 per cent and in Southern Europe by 4.0 per cent.

The information on overnight stays in other European countries is based on monthly data on the use of capacity at European accommodation establishments collected by Eurostat.

Nights spent by residents in Europe (2004 = 100)



Number of accommodation establishments went up in 2017

In 2017, Statistics Finland’s register of accommodation establishments has been updated with new and closed establishments throughout the year. The target group of the accommodation statistics has been reviewed and a few accommodation establishments operating in the industries of hotels and hostels were added to it. The number of accommodation establishments contained in the statistics grew by 15 in 2017. The room capacity increased by 3,080 rooms and the number of beds by 7,610 beds. The capacity grew in hotels, while in camping sites and other accommodation establishments, apart from hostels, the number of establishments, rooms and beds went down compared with 2016.

In 2017, the statistics covered a total of 1,383 accommodation establishments: 672 hotels, 115 guest houses, 320 holiday villages, 226 camping sites and 50 hostels. Holiday villages of hotel calibre are included in hotels. The accommodation establishments had 68,834 rooms (or cottages) with a total of 170,092 beds. In addition to the room and bed capacity, the accommodation establishments had 20,253 caravan pitches with electricity connection, 15,623 of which were located at camping sites.

When the capacity of accommodation establishments is viewed according to the number of rooms, the statistics contained 1,000 establishments with fewer than 50 rooms and 383 establishments with at least 50 rooms in 2017. Measured by bed capacity, there were 927 establishments with fewer than one hundred beds and 456 establishments with at least one hundred beds.

In 2017, there were 1,103 accommodation establishments that were open year round and 280 establishments that were open part of the year; these were mostly camping sites and holiday villages.

Contents

Tables

Appendix tables

Appendix table 1. Capacity and its utilization in 2017.....	9
Appendix table 2. Nights spent in all establishments in 2017.....	10
Appendix table 3. Hotel capacity and capacity utilization in 2017.....	11
Appendix table 4. Nights spent in hotels in 2017.....	12
Appendix table 5. Visitor arrivals and nights spent by country of residence in 2017.....	13
Appendix table 6. Nights spent in all establishments by month in 2017.....	14
Appendix table 7.1. Nights spent by non-residents and annual change (%) in all establishments in 2017.....	15
Appendix table 7.2. Nights spent by non-residents and annual change (%) in all establishments in 2017.....	16
Appendix table 8.1. Nights spent by non-residents and annual change (%) in hotels in 2017.....	17
Appendix table 8.2. Nights spent by non-residents and annual change (%) in hotels in 2017.....	18
Appendix table 9.1. Capacity of accommodation establishments and capacity utilization by type of establishment in 2017.....	19
Appendix table 9.2. Capacity of accommodation establishments and capacity utilization by type of establishment, May-August 2017.....	19
Appendix table 10.1. Capacity of accommodation establishments by type of establishment in 2017.....	19
Appendix table 10.2. Capacity of accommodation establishments by opening season in 2017.....	20
Appendix table 10.3. Capacity of accommodation establishments by number of bed-places in 2017.....	20
Appendix table 10.4. Capacity of accommodation establishments by number of rooms in 2017.....	21

Appendix tables

Appendix table 1. Capacity and its utilization in 2017

Region	Number of establishments on average	Number of bedrooms on average	Occupancy rate of bedrooms, %	Change of the occupancy rate compared to previous year, %-units	¹⁾ Average price of night spent, in euros (incl. VAT 10 %)
Whole country	1,168	63,094	51.9	2.2	54.68
Mainland Finland	1,119	61,852	52.2	2.2	54.80
Uusimaa	162	16,880	67.2	1.2	69.37
Espoo
Helsinki	71	10,085	72.9	1.2	74.55
Vantaa	15	2,670	73.3	0.5	64.09
Varsinais-Suomi	75	3,760	52.5	2.8	53.83
Turku	24	2,269	60.0	4.3	58.33
Satakunta	41	1,458	46.0	4.6	52.70
Pori	13	721	51.2	8.1	52.38
Kanta-Häme	27	1,501	39.2	1.7	47.56
Hämeenlinna	11	760	44.0	3.7	50.82
Pirkanmaa	69	4,559	53.1	3.1	54.52
Tampere
Päijät-Häme	35	1,951	41.8	1.1	51.17
Lahti	11	948	52.8	1.7	56.36
Kymenlaakso	27	1,044	44.7	1.4	50.22
Kouvola	11	539	44.1	4.7	49.45
South Karelia	34	1,938	47.7	1.1	41.36
Lappeenranta	12	1,201	53.1	-3.1	41.16
Etelä-Savo	78	2,341	41.1	1.6	42.45
Mikkeli	18	691	48.4	0.1	47.89
Pohjois-Savo	49	2,636	45.8	1.2	49.15
Kuopio	24	1,543	51.0	1.8	52.54
North Karelia	52	1,511	44.3	3.5	50.30
Joensuu
Central Finland	53	3,192	49.7	1.7	52.05
Jyväskylä	15	1,442	59.2	2.6	67.71
South Ostrobothnia	47	1,800	43.6	-2.4	42.29
Seinäjoki
Ostrobothnia	31	1,393	47.0	2.6	58.30
Vaasa
Central Ostrobothnia	17	598	39.4	-3.2	54.76
Kokkola
North Ostrobothnia	107	4,899	44.6	-0.1	42.30
Kuusamo	34	1,353	42.1	1.3	30.50
Oulu
Kainuu	40	2,197	44.0	0.9	27.94
Kajaani
Lapland	175	8,196	46.2	3.0	50.70
Rovaniemi
Åland	49	1,242	36.0	1.0	..
Maarianhamina	12	604	47.4	-2.0	..

1) [...] Data too uncertain for presentation.

Appendix table 2. Nights spent in all establishments in 2017

Region	Nights spent, total	Change of nights spent, total, %	Nights spent, residents	Change of nights spent, residents, %	Nights spent, non-residents	Change of nights spent, non-residents, %
Whole country	21,914,154	7.7	15,171,320	4.1	6,742,834	16.8
Mainland Finland	21,510,205	7.9	15,005,619	4.1	6,504,586	17.7
Uusimaa	6,449,086	17.1	3,434,557	15.5	3,014,529	18.9
Espoo
Helsinki	4,175,012	16.7	1,916,500	15.5	2,258,512	17.8
Vantaa	1,093,172	20.4	674,360	22.9	418,812	16.6
Varsinais-Suomi	1,276,217	5.8	1,021,331	3.6	254,886	15.5
Turku	811,076	5.9	638,490	3.0	172,586	18.3
Satakunta	419,692	9.9	346,091	6.9	73,601	27.1
Pori	235,368	10.1	200,540	5.5	34,828	46.8
Kanta-Häme	372,318	-2.5	330,421	-4.0	41,897	11.8
Hämeenlinna	204,937	-4.5	181,655	-7.5	23,282	28.5
Pirkanmaa	1,563,542	7.0	1,331,829	6.5	231,713	10.4
Tampere
Päijät-Häme	569,437	6.3	460,349	0.9	109,088	37.3
Lahti	281,850	17.5	217,302	13.8	64,548	31.8
Kymenlaakso	300,610	5.1	241,912	2.7	58,698	15.8
Kouvola	139,437	3.7	120,129	2.4	19,308	12.8
South Karelia	692,692	7.4	466,090	0.9	226,602	23.7
Lappeenranta	443,272	2.5	331,495	-2.3	111,777	20.1
Etelä-Savo	692,860	-0.3	529,844	-4.5	163,016	16.3
Mikkeli	221,437	-0.2	175,400	-2.8	46,037	11.4
Pohjois-Savo	842,923	2.5	751,486	3.1	91,437	-2.6
Kuopio	542,103	-1.7	486,993	-1.1	55,110	-6.4
North Karelia	456,323	1.4	388,734	0.1	67,589	9.2
Joensuu
Central Finland	1,045,577	2.7	885,285	0.4	160,292	18.3
Jyväskylä	458,094	3.1	379,060	0.6	79,034	17.1
South Ostrobothnia	666,913	-3.7	632,291	-3.0	34,622	-16.1
Seinäjoki
Ostrobothnia	386,989	-0.4	302,564	-2.9	84,425	9.6
Vaasa
Central Ostrobothnia	149,402	-7.3	133,506	-7.3	15,896	-7.5
Kokkola
North Ostrobothnia	1,800,102	5.6	1,490,547	5.1	309,555	8.3
Kuusamo	587,697	7.4	444,644	2.9	143,053	24.4
Oulu
Kainuu	916,449	-1.6	829,400	-1.7	87,049	-0.5
Kajaani
Lapland	2,909,073	9.1	1,429,382	-1.6	1,479,691	21.9
Rovaniemi
Åland	403,949	-0.6	165,701	1.8	238,248	-2.1
Maarianhamina	200,715	-0.4	103,680	-0.0	97,035	-0.7

Appendix table 3. Hotel capacity and capacity utilization in 2017

Region / municipality	Number of establishments on average	Number of bedrooms on average	Occupancy rate of bedrooms, %	Change compared to previous year, %-units	Room price, euros (incl. VAT 10 %)	¹⁾ RevPAR, euros (incl. VAT 10 %)
Whole country	621	52,207	55.9	1.8	101.26	56.57
Mainland Finland	607	51,434	56.1	1.8	101.25	56.76
Uusimaa	124	15,603	68.4	1.3	111.87	76.49
Espoo	12	1,258	57.9	2.2	89.68	51.90
Helsinki	63	9,838	73.0	1.3	117.80	86.02
Vantaa	12	2,345	73.0	0.2	108.45	79.17
Varsinais-Suomi	38	2,870	58.9	2.9	93.73	55.17
Turku	19	1,971	63.7	3.3	95.30	60.74
Satakunta	25	1,117	53.0	5.9	89.89	47.62
Pori	8	601	55.4	9.0	90.88	50.35
Kanta-Häme	16	1,307	42.1	0.4	82.08	34.54
Hämeenlinna	7	687	46.0	2.5	86.64	39.86
Pirkanmaa	42	3,916	56.0	3.0	100.37	56.16
Tampere	24	2,994	61.0	3.4	103.43	63.07
Päijät-Häme	14	1,725	44.0	0.5	93.12	40.98
Lahti	7	898	53.7	1.8	90.60	48.61
Kymenlaakso	14	787	50.0	1.7	92.22	46.09
Kouvola	6	406	48.8	4.2	87.55	42.73
South Karelia	15	1,549	49.5	-1.8	93.08	46.12
Lappeenranta	7	972	53.8	-7.8	88.10	47.39
Etelä-Savo	29	1,631	45.2	1.2	85.62	38.68
Mikkeli	8	551	50.7	-0.4	89.55	45.44
Pohjois-Savo	28	2,334	47.0	-0.1	93.57	43.99
Kuopio	15	1,387	51.8	0.0	99.47	51.50
North Karelia	22	1,179	49.3	3.7	91.28	44.96
Joensuu	6	604	61.5	7.1	90.92	55.89
Central Finland	27	2,703	53.4	1.8	92.19	49.26
Jyväskylä	12	1,351	61.7	2.4	100.51	61.99
South Ostrobothnia	25	1,502	48.6	-2.7	81.78	39.73
Seinäjoki	7	600	53.8	-3.4	94.86	51.05
Ostrobothnia	21	1,227	51.7	3.1	94.48	48.85
Vaasa	7	795	59.1	2.4	96.30	56.87
Central Ostrobothnia	10	507	42.4	-3.3	89.41	37.94
Kokkola	5	366	51.1	1.3	92.23	47.10
North Ostrobothnia	51	3,508	50.0	-0.6	93.44	46.72
Kuusamo	11	756	40.6	0.0	98.02	39.82
Oulu	11	1,546	62.4	-0.6	98.34	61.37
Kainuu	18	1,736	49.4	2.3	66.51	32.83
Kajaani	6	414	42.1	-0.8	82.35	34.69
Lapland	90	6,234	50.5	3.4	112.33	56.70
Rovaniemi	17	1,429	62.2	1.8	121.01	75.22
Åland	14	773	42.5	0.8
Maarianhamina	7	502	51.4	-1.9

1) RevPar = Average accommodation sales revenue per available room. Calculation formula: RevPar = Average room price

*Occupancy rate. [...] Data too uncertain for presentation.

Appendix table 4. Nights spent in hotels in 2017

Region / municipality	Nights spent, total	Change of nights spent, total, %	Nights spent, residents	Change of nights spent, residents, %	Nights spent, non-residents	Change of nights spent, non-residents, %
Whole country	17,483,681	7.0	11,831,161	3.6	5,652,520	14.9
Mainland Finland	17,265,353	7.1	11,726,811	3.6	5,538,542	15.3
Uusimaa	5,840,285	11.6	3,044,737	9.7	2,795,548	13.8
Espoo	378,879	11.9	212,498	2.1	166,381	27.5
Helsinki	3,937,077	14.1	1,796,038	13.2	2,141,039	14.9
Vantaa	947,463	4.3	583,702	6.4	363,761	1.3
Varsinais-Suomi	990,698	5.1	792,093	1.9	198,605	20.2
Turku	723,441	5.9	575,513	2.9	147,928	19.5
Satakunta	300,630	10.9	235,129	7.0	65,501	27.8
Pori	174,467	13.5	143,591	7.4	30,876	54.3
Kanta-Häme	327,872	1.0	288,885	-0.3	38,987	12.3
Hämeenlinna	184,372	4.5	161,733	1.2	22,639	36.1
Pirkanmaa	1,316,717	8.6	1,118,214	8.1	198,503	11.5
Tampere	1,053,020	10.1	872,587	9.4	180,433	13.5
Päijät-Häme	465,489	6.7	369,535	0.8	95,954	37.2
Lahti	267,835	20.5	205,055	17.2	62,780	32.7
Kymenlaakso	200,966	7.5	158,360	4.3	42,606	21.4
Kouvola	103,061	7.7	87,084	6.2	15,977	16.9
South Karelia	557,958	7.7	375,209	0.8	182,749	25.5
Lappeenranta	361,778	3.1	274,114	-1.4	87,664	20.2
Etelä-Savo	437,649	1.6	367,338	-2.9	70,311	34.1
Mikkeli	162,624	-0.5	135,343	-2.8	27,281	12.5
Pohjois-Savo	709,370	2.3	644,327	2.8	65,043	-2.2
Kuopio	462,173	-1.5	423,310	-0.8	38,863	-8.7
North Karelia	337,513	2.4	294,476	0.9	43,037	13.9
Joensuu	180,600	6.7	151,507	3.3	29,093	28.7
Central Finland	894,235	1.6	758,430	-0.2	135,805	12.7
Jyväskylä	439,442	1.7	362,234	-1.0	77,208	16.2
South Ostrobothnia	486,159	-0.3	459,753	0.8	26,406	-16.0
Seinäjoki	165,126	-6.3	152,218	-4.4	12,908	-24.0
Ostrobothnia	330,361	3.0	253,273	0.9	77,088	10.5
Vaasa	248,123	5.8	189,662	6.2	58,461	4.5
Central Ostrobothnia	108,277	-10.1	98,972	-8.4	9,305	-25.3
Kokkola	92,295	-0.8	83,945	-1.4	8,350	5.0
North Ostrobothnia	1,121,750	4.0	912,062	4.4	209,688	2.4
Kuusamo	268,186	-1.1	191,291	-7.0	76,895	17.4
Oulu	562,677	8.7	474,389	10.6	88,288	-0.4
Kainuu	744,367	1.6	685,746	1.3	58,621	5.0
Kajaani	91,703	-0.1	83,228	-1.3	8,475	13.2
Lapland	2,095,057	8.6	870,272	-4.7	1,224,785	20.6
Rovaniemi	597,887	14.0	201,294	-4.7	396,593	26.6
Åland	218,328	2.2	104,350	4.8	113,978	-0.1
Maarianhamina	161,891	2.2	86,315	4.2	75,576	0.1

Appendix table 5. Visitor arrivals and nights spent by country of residence in 2017

Country of residence	Visitor arrivals in all accommodation establishments	Nights spent in all accommodation establishments	Change of nights spent in all accommodation establishments, %	Nights spent in hotels	Change of nights spent in hotels, %
Total	11,794,394	21,914,154	7.7	17,483,681	7.0
Finland	8,614,140	15,171,320	4.1	11,831,161	3.6
Foreign countries	3,180,254	6,742,834	16.8	5,652,520	14.9
Russia	382,114	821,698	17.8	625,629	22.8
Germany	297,446	622,991	15.3	509,204	14.1
Sweden	341,271	597,339	8.7	473,726	9.7
United Kingdom	229,083	585,814	17.0	520,416	14.8
China	209,568	313,203	35.3	301,381	33.8
France	101,105	280,069	12.0	240,025	7.9
United States	125,726	268,723	16.0	259,499	15.6
Japan	124,548	238,278	11.1	231,823	10.3
Netherlands	88,245	227,405	30.1	170,724	22.2
Estonia	93,684	219,504	13.5	143,008	4.1
Norway	103,142	199,353	10.2	160,418	13.0
Switzerland	73,683	167,450	9.3	122,419	6.7
Spain	69,255	162,361	29.0	138,650	22.3
Italy	74,781	155,599	11.8	138,328	9.8
Poland	38,187	116,874	31.7	95,838	30.9
Denmark	62,346	113,580	9.3	103,139	6.6
Australia	37,903	82,602	43.7	77,095	43.2
India	29,152	78,634	43.9	75,532	41.7
Austria	30,152	70,769	19.7	61,084	18.6
Belgium	31,148	70,452	16.4	59,414	10.2
Latvia	23,243	58,776	6.5	35,268	6.3
Israel	19,221	57,494	16.2	53,926	16.0
South Korea	28,038	51,605	23.3	48,294	21.8
Lithuania	16,224	51,280	52.0	24,178	6.6
Canada	18,580	45,745	-6.8	43,331	-7.9
Thailand	17,403	43,081	-13.2	25,696	32.5
Czech	16,544	38,806	10.9	31,739	6.1
Turkey	14,445	30,956	0.8	29,111	-1.5
Ireland	13,977	28,744	16.3	26,205	17.1
Taiwan	18,681	28,073	25.4	26,459	23.5
Brazil	11,358	24,649	23.0	23,347	22.1
Portugal	10,150	24,416	-1.4	21,903	-7.0
Hungary	8,245	20,620	10.1	17,414	5.5

Appendix table 6. Nights spent in all establishments by month in 2017

Month	Nights spent, total	Change of nights spent, total, %	Nights spent, residents	Change of nights spent, residents, %	Nights spent, non-residents	Change of nights spent, non-residents, %
Total	21,914,154	7.7	15,171,320	4.1	6,742,834	16.8
January	1,475,638	13.3	849,437	8.6	626,201	20.4
February	1,625,803	9.2	1,063,951	3.6	561,852	21.8
March	1,808,028	6.5	1,274,681	0.2	533,347	25.6
April	1,537,925	9.1	1,180,468	6.2	357,457	19.6
May	1,464,163	8.5	1,034,619	5.9	429,544	15.2
June	2,123,039	7.7	1,503,798	4.8	619,241	15.3
July	3,131,080	4.2	2,315,274	1.3	815,806	13.6
August	2,301,793	4.9	1,528,323	0.8	773,470	14.0
September	1,759,395	6.9	1,270,816	4.0	488,579	15.4
October	1,521,043	6.2	1,153,167	3.4	367,876	16.2
November	1,460,464	10.3	1,027,866	7.0	432,598	18.9
December	1,705,783	12.0	968,920	11.8	736,863	12.4
Spring (January-April)	6,447,394	9.3	4,368,537	4.2	2,078,857	21.9
Summer (May-August)	9,020,075	5.9	6,382,014	2.7	2,638,061	14.3
Autumn (September-December)	6,446,685	8.8	4,420,769	6.1	2,025,916	15.2

Appendix table 7.1. Nights spent by non-residents and annual change (%) in all establishments in 2017

Region	Foreign countries		Russia		Germany		Sweden		United Kingdom		China	
Whole country	6,742,834	16.8	821,698	17.8	622,991	15.3	597,339	8.7	585,814	17.0	313,203	35.3
Mainland Finland	6,504,586	17.7	818,436	18.0	611,151	15.8	411,137	13.8	584,306	17.0	312,964	35.2
Uusimaa	3,014,529	18.9	258,857	36.9	235,032	10.3	216,010	15.4	208,673	20.2	211,285	25.6
Espoo
Helsinki	2,258,512	17.8	195,716	41.3	172,259	10.4	162,080	14.7	167,464	22.4	117,777	32.0
Vantaa	418,812	16.6	25,046	21.9	22,792	4.4	29,002	13.3	24,852	-0.0	63,302	19.3
Varsinais-Suomi	254,886	15.5	16,631	14.7	34,341	28.8	35,184	-2.9	13,202	46.3	3,899	5.4
Turku	172,586	18.3	10,142	14.1	25,337	43.9	25,923	1.0	9,045	15.0	3,012	7.2
Satakunta	73,601	27.1	1,657	-36.9	19,050	51.3	10,505	72.2	4,266	27.9	447	-7.5
Pori	34,828	46.8	820	-22.3	8,962	131.2	4,444	74.1	2,590	94.6	149	10.4
Kanta-Häme	41,897	11.8	4,016	7.4	5,172	32.4	3,754	-5.0	2,700	85.2	1,158	14.0
Hämeenlinna	23,282	28.5	2,110	-8.2	2,820	60.0	2,146	24.4	2,146	107.5	332	10.7
Pirkanmaa	231,713	10.4	17,761	18.9	22,009	15.3	21,304	13.0	11,410	4.4	6,794	27.7
Tampere
Päijät-Häme	109,088	37.3	17,498	5.7	10,779	66.6	8,087	40.6	4,760	86.3	5,003	248.6
Lahti	64,548	31.8	9,623	-7.1	6,413	47.6	5,679	32.1	2,942	86.9	1,355	203.1
Kymenlaakso	58,698	15.8	21,456	12.0	5,236	40.5	2,898	-11.4	3,188	30.0	452	0.2
Kouvola	19,308	12.8	5,792	-3.8	2,254	42.2	1,377	28.7	521	20.3	201	123.3
South Karelia	226,602	23.7	173,178	24.0	5,943	42.7	3,840	15.1	1,964	57.1	1,459	-2.9
Lappeenranta	111,777	20.1	80,582	16.8	3,780	26.5	2,287	3.8	1,339	40.4	913	-32.0
Etelä-Savo	163,016	16.3	79,696	3.7	20,390	27.1	3,058	-15.0	3,334	28.6	2,049	108.0
Mikkeli	46,037	11.4	19,980	-0.9	2,866	-3.3	1,281	-22.4	810	-20.2	729	93.9
Pohjois-Savo	91,437	-2.6	31,847	16.3	13,664	3.0	5,189	26.5	2,915	0.0	1,142	-6.5
Kuopio	55,110	-6.4	20,811	6.9	6,581	30.3	3,348	24.0	1,938	-18.4	494	-46.7
North Karelia	67,589	9.2	22,397	-2.3	9,268	13.3	3,248	49.8	2,087	20.4	490	-5.6
Joensuu
Central Finland	160,292	18.3	19,334	-5.0	21,662	16.4	9,648	15.6	7,141	5.3	1,587	-0.1
Jyväskylä	79,034	17.1	3,834	-15.5	12,812	60.8	5,961	22.2	5,535	1.3	1,431	5.0
South Ostrobothnia	34,622	-16.1	1,936	2.9	2,791	0.6	3,332	27.2	696	-21.9	424	33.8
Seinäjoki
Ostrobothnia	84,425	9.6	1,590	-3.3	5,979	-1.0	25,950	26.2	3,787	10.2	731	-9.5
Vaasa
Central Ostrobothnia	15,896	-7.5	365	12.3	1,573	1.1	2,401	17.2	752	38.7	239	-5.9
Kokkola
North Ostrobothnia	309,555	8.3	61,319	17.8	30,582	2.9	18,935	-8.8	36,422	-8.3	7,332	17.4
Kuusamo	143,053	24.4	45,903	17.6	7,228	-3.8	1,826	25.3	25,782	-3.1	3,518	35.6
Oulu
Kainuu	87,049	-0.5	32,503	-6.7	5,645	29.2	1,801	-19.0	3,406	23.3	4,805	108.2
Kajaani
Lapland	1,479,691	21.9	56,395	2.0	162,035	17.9	35,993	19.5	273,603	17.3	63,668	81.5
Rovaniemi
Åland	238,248	-2.1	3,262	-14.5	11,840	-6.2	186,202	-1.0	1,508	6.3	239	97.5
Maarianhamina	97,035	-0.7	1,594	-8.1	3,743	6.8	76,888	-3.5	1,020	5.4	147	53.1

Appendix table 7.2. Nights spent by non-residents and annual change (%) in all establishments in 2017

Region	France		United States		Japan		Netherlands		Estonia		Norway	
Whole country	280,069	12.0	268,723	16.0	238,278	11.1	227,405	30.1	219,504	13.5	199,353	10.2
Mainland Finland	278,644	12.0	267,434	16.0	238,048	11.0	225,472	29.9	211,970	13.9	195,384	10.0
Uusimaa	78,246	12.1	194,800	16.1	171,841	17.1	71,371	13.2	86,207	18.4	78,519	14.1
Espoo
Helsinki	62,090	13.7	163,334	17.1	153,786	15.5	53,520	13.5	44,862	24.5	62,296	17.4
Vantaa	9,159	5.7	22,665	8.5	14,327	28.5	7,929	-2.2	14,874	46.5	9,020	7.5
Varsinais-Suomi	7,125	2.4	8,894	26.2	5,053	5.5	7,161	9.9	20,096	-6.8	5,792	-14.2
Turku	5,106	-0.2	7,151	20.7	2,047	-7.7	5,763	10.8	8,645	15.9	4,317	-18.0
Satakunta	3,375	-5.1	1,802	22.9	623	-7.7	2,446	39.7	4,055	18.9	1,216	7.4
Pori	720	-20.5	932	61.0	311	10.7	1,253	34.0	1,468	-16.0	707	105.5
Kanta-Häme	1,189	26.0	965	20.2	747	-6.6	1,415	97.1	2,977	36.2	1,577	50.8
Hämeenlinna	538	6.3	707	44.0	648	-17.0	1,113	128.5	1,182	-1.5	1,098	165.2
Pirkanmaa	7,180	-2.7	11,054	26.5	3,857	-3.8	6,917	20.5	14,123	5.8	5,490	15.6
Tampere
Päijät-Häme	2,291	72.3	1,631	5.3	1,498	59.5	2,020	35.2	6,687	33.2	6,968	197.5
Lahti	1,538	91.1	1,011	3.7	622	22.2	1,518	47.0	3,471	55.4	4,469	200.5
Kymenlaakso	1,514	11.6	1,196	13.9	153	-15.5	1,355	-2.2	4,653	32.5	934	93.4
Kouvola	521	16.6	585	50.0	73	-17.0	229	-43.9	1,985	5.9	675	215.4
South Karelia	1,095	-7.9	1,623	67.8	439	70.8	2,089	4.7	4,472	-1.7	1,061	-10.3
Lappeenranta	767	-8.5	859	50.2	240	7.6	1,873	214.8	2,583	-19.3	938	-9.1
Etelä-Savo	3,479	41.4	1,354	-5.8	725	28.1	2,792	5.4	6,392	60.1	804	163.6
Mikkeli	990	35.8	399	-22.7	262	-5.4	673	19.5	3,911	126.9	294	83.8
Pohjois-Savo	1,618	-6.4	2,080	-59.5	880	56.6	2,625	17.0	4,862	-27.7	1,118	11.4
Kuopio	1,053	-21.4	1,581	-64.9	410	-13.0	1,883	13.2	2,795	-41.3	762	0.3
North Karelia	1,876	23.0	1,380	71.2	684	7.0	1,832	-4.7	2,482	-11.8	1,500	241.7
Joensuu
Central Finland	7,720	-17.3	5,305	-0.7	1,508	-36.3	10,116	119.0	22,734	20.7	1,713	7.3
Jyväskylä	3,081	-9.2	4,816	-1.4	1,343	-37.6	2,089	-5.4	3,085	23.2	1,443	14.0
South Ostrobothnia	1,119	-17.8	1,206	34.9	433	-12.3	653	10.1	2,264	-30.3	921	25.8
Seinäjoki
Ostrobothnia	2,125	49.2	2,498	11.5	897	9.1	2,976	9.3	3,037	-11.0	3,988	16.5
Vaasa
Central Ostrobothnia	243	-15.6	445	-9.7	96	-20.7	401	13.0	1,228	-3.4	622	32.6
Kokkola
North Ostrobothnia	9,363	30.6	6,725	-3.0	4,607	18.3	24,039	66.1	10,162	29.9	13,319	-6.8
Kuusamo	4,284	57.1	1,532	54.9	2,922	16.6	15,002	126.5	1,779	5.3	664	-16.9
Oulu
Kainuu	7,963	15.2	931	-42.4	1,555	38.6	2,195	9.9	2,267	64.3	1,147	-2.2
Kajaani
Lapland	141,123	13.7	23,545	45.2	42,452	-6.4	83,069	39.9	13,272	28.8	68,695	1.6
Rovaniemi
Åland	1,425	18.1	1,289	3.0	230	79.7	1,933	70.5	7,534	4.7	3,969	20.2
Maarianhamina	715	5.5	986	54.5	207	88.2	647	34.2	1,913	5.5	2,769	16.2

Appendix table 8.1. Nights spent by non-residents and annual change (%) in hotels in 2017

Region / municipality	Foreign countries		Russia		United Kingdom		Germany		Sweden		China	
Whole country	5,652,520	14.9	625,629	22.8	520,416	14.8	509,204	14.1	473,726	9.7	301,381	33.8
Mainland Finland	5,538,542	15.3	624,256	22.9	519,552	14.8	506,615	14.1	378,385	12.4	301,192	33.7
Uusimaa	2,795,548	13.8	237,504	32.9	203,917	19.6	216,114	7.9	210,795	13.9	208,385	24.6
Espoo	166,381	27.5	15,452	17.6	10,601	52.1	16,167	4.1	12,397	19.7	14,803	3.7
Helsinki	2,141,039	14.9	182,639	37.2	164,186	22.2	158,493	8.7	160,106	14.3	115,742	31.0
Vantaa	363,761	1.3	23,498	14.4	24,042	-3.3	21,839	0.0	28,264	10.4	63,075	18.9
Varsinais-Suomi	198,605	20.2	10,761	11.5	11,161	37.2	24,926	30.9	32,258	-2.3	3,254	-5.5
Turku	147,928	19.5	8,229	11.6	8,448	16.8	20,298	49.5	24,280	0.9	2,748	2.5
Satakunta	65,501	27.8	1,227	-26.7	4,158	28.3	18,262	62.3	9,995	68.1	382	-16.4
Pori	30,876	54.3	665	-19.0	2,515	98.3	8,622	144.1	4,119	64.9	118	-11.3
Kanta-Häme	38,987	12.3	3,333	23.4	2,644	86.5	4,654	30.7	3,450	-9.0	1,151	15.6
Hämeenlinna	22,639	36.1	1,904	23.0	2,115	111.1	2,700	65.5	2,146	26.8	331	14.1
Pirkanmaa	198,503	11.5	13,849	21.0	10,496	2.7	18,518	19.6	19,623	8.9	6,477	33.7
Tampere	180,433	13.5	8,241	14.8	9,867	6.3	17,047	28.4	18,365	10.2	5,644	32.5
Päijät-Häme	95,954	37.2	14,762	7.4	4,394	79.9	8,584	67.3	7,729	40.7	4,864	239.2
Lahti	62,780	32.7	9,126	-8.0	2,938	90.8	6,140	46.4	5,634	34.1	1,325	197.1
Kymenlaakso	42,606	21.4	14,157	33.6	2,778	23.4	3,785	41.6	2,598	-13.6	344	6.2
Kouvola	15,977	16.9	4,372	7.4	362	-11.1	2,023	54.2	1,344	28.9	169	94.3
South Karelia	182,749	25.5	147,900	28.2	1,622	41.7	4,327	34.3	3,494	15.6	1,370	-6.5
Lappeenranta	87,664	20.2	65,490	22.3	1,182	38.4	2,793	14.0	2,057	3.9	841	-35.7
Etelä-Savo	70,311	34.1	34,167	27.3	1,475	6.1	3,132	-11.1	2,396	-2.2	1,904	160.1
Mikkeli	27,281	12.5	12,368	8.2	656	-5.5	937	-38.5	1,118	-22.8	689	93.0
Pohjois-Savo	65,043	-2.2	19,472	15.6	2,515	-3.0	10,681	0.2	4,538	23.6	1,067	-1.7
Kuopio	38,863	-8.7	11,975	9.9	1,564	-29.1	5,378	47.3	3,094	27.3	478	-42.3
North Karelia	43,037	13.9	11,659	-0.3	1,412	-3.9	5,062	6.6	2,697	53.4	441	-7.5
Joensuu	29,093	28.7	6,806	20.9	1,099	1.1	3,456	35.0	2,110	51.0	369	-6.1
Central Finland	135,805	12.7	17,307	-2.8	7,014	6.1	20,301	18.4	8,900	16.1	1,517	-2.6
Jyväskylä	77,208	16.2	3,709	-16.5	5,508	0.9	12,698	61.1	5,761	19.0	1,383	1.5
South Ostrobothnia	26,406	-16.0	1,533	31.7	617	-26.9	2,081	-10.5	2,690	17.4	420	34.2
Seinäjoki	12,908	-24.0	336	-44.1	319	-31.7	1,144	3.2	1,365	18.4	273	254.5
Ostrobothnia	77,088	10.5	1,562	6.6	3,704	11.1	4,784	-3.9	23,314	27.9	731	-7.9
Vaasa	58,461	4.5	1,327	3.3	2,827	-4.5	3,332	-0.9	19,029	25.6	686	-9.0
Central Ostrobothnia	9,305	-25.3	339	44.3	508	24.5	1,170	3.1	2,102	16.1	233	-8.3
Kokkola	8,350	5.0	236	4.0	494	35.0	1,153	34.1	1,957	16.4	210	18.0
North Ostrobothnia	209,688	2.4	31,321	28.8	25,443	-20.0	23,478	2.2	15,441	-9.1	4,735	-2.9
Kuusamo	76,895	17.4	22,799	34.3	15,714	-18.8	4,147	-12.7	1,442	21.4	1,170	-10.1
Oulu	88,288	-0.4	6,196	15.8	4,553	-13.2	10,806	8.0	11,766	-9.1	3,193	12.2
Kainuu	58,621	5.0	21,961	-6.8	1,605	13.4	2,936	3.7	1,383	-23.7	4,632	104.0
Kajaani	8,475	13.2	1,629	6.5	291	7.0	850	6.4	681	18.8	112	9.8
Lapland	1,224,785	20.6	41,442	3.5	234,089	15.1	133,820	18.5	24,982	10.5	59,285	81.8
Rovaniemi	396,593	26.6	19,061	12.6	35,521	28.0	27,455	30.3	6,698	13.0	31,866	83.4
Åland	113,978	-0.1	1,373	-13.6	864	9.1	2,589	21.7	95,341	0.0	189	145.5
Maarianhamina	75,576	0.1	1,281	-7.4	710	-2.2	1,724	9.2	61,599	-3.4	125	115.5

Appendix table 8.2. Nights spent by non-residents and annual change (%) in hotels in 2017

Region / municipality	United States		France		Japan		Netherlands		Norway		Estonia	
Whole country	259,499	15.6	240,025	7.9	231,823	10.3	170,724	22.2	160,418	13.0	143,008	4.1
Mainland Finland	258,526	15.5	239,578	8.0	231,609	10.2	170,334	22.1	157,969	12.6	139,711	3.9
Uusimaa	190,817	14.9	70,184	6.7	168,693	16.2	66,183	10.2	76,907	13.8	62,771	1.6
Espoo	5,713	15.9	3,320	26.5	2,527	75.0	3,716	17.6	3,892	-8.2	9,919	-12.9
Helsinki	160,261	16.2	55,906	8.6	151,045	14.8	49,865	11.3	61,440	17.9	36,854	15.9
Vantaa	22,356	7.0	8,390	-3.2	14,069	26.2	7,557	-6.8	8,783	4.7	10,613	4.5
Varsinais-Suomi	7,814	25.8	4,499	8.7	4,675	4.1	5,542	17.4	5,247	-12.8	8,694	-21.9
Turku	6,696	27.4	3,878	11.6	1,798	-8.0	4,943	22.3	3,932	-18.4	5,893	22.0
Satakunta	1,782	24.4	3,239	-6.8	618	-6.8	2,394	43.4	1,108	10.2	2,445	9.6
Pori	921	63.3	600	-30.7	307	13.3	1,237	37.8	638	101.3	874	-6.0
Kanta-Häme	923	22.7	1,004	16.3	746	-6.8	1,343	123.5	1,564	65.7	2,309	26.0
Hämeenlinna	707	51.1	360	-17.6	648	-17.0	1,071	144.5	1,098	201.6	1,147	19.5
Pirkanmaa	10,659	26.8	6,016	-8.4	3,828	2.0	5,989	13.5	5,095	16.6	9,880	18.1
Tampere	10,407	28.5	5,735	-7.9	3,770	2.4	5,705	12.9	4,925	19.0	7,891	14.1
Päijät-Häme	1,557	4.1	2,039	66.2	1,467	59.5	1,826	35.3	6,832	208.4	4,203	44.0
Lahti	1,001	3.0	1,513	94.0	603	23.1	1,496	47.2	4,437	200.6	3,052	68.2
Kymenlaakso	1,174	15.9	1,271	8.4	128	-21.0	901	-16.9	862	136.8	4,052	66.7
Kouvola	575	49.4	436	10.1	61	-12.9	166	-56.4	624	210.4	1,806	29.8
South Karelia	1,492	82.0	795	-8.1	422	69.5	1,261	-28.9	869	8.4	2,909	-8.1
Lappeenranta	781	81.6	518	-7.5	224	4.2	1,087	155.8	778	15.4	1,704	-21.7
Etelä-Savo	923	-4.6	1,501	29.6	426	9.5	761	28.8	501	136.3	1,965	31.4
Mikkeli	352	-15.4	671	25.0	187	-4.6	472	36.4	260	111.4	1,371	42.1
Pohjois-Savo	1,902	-62.4	929	-23.5	757	37.9	1,471	2.4	946	18.1	2,323	-38.2
Kuopio	1,526	-65.7	558	-42.9	401	-12.6	1,066	-3.5	625	9.6	1,492	-44.8
North Karelia	1,272	90.1	1,344	44.8	638	4.1	1,090	-3.8	908	134.0	1,663	-31.3
Joensuu	996	74.7	1,149	58.3	443	8.6	619	9.4	764	143.3	566	-40.0
Central Finland	5,267	-0.6	7,212	-20.2	1,480	-37.4	8,021	108.4	1,572	2.9	16,426	7.2
Jyväskylä	4,814	-1.4	3,049	-8.4	1,330	-38.2	1,855	6.0	1,362	7.6	2,651	8.2
South Ostrobothnia	920	12.5	615	3.5	431	-12.6	503	8.2	876	27.0	1,815	-24.3
Seinäjoki	502	2.2	282	-8.7	333	-14.4	288	6.3	434	119.2	712	-38.1
Ostrobothnia	2,437	31.6	1,957	52.2	894	13.2	2,681	12.7	3,347	18.8	2,567	-6.9
Vaasa	2,156	38.5	1,723	52.2	806	11.3	1,715	-6.0	2,844	8.7	1,810	-0.6
Central Ostrobothnia	429	-9.3	149	2.8	92	-19.3	298	4.6	539	39.3	637	-23.4
Kokkola	367	-20.7	135	-6.3	92	-19.3	286	15.8	531	41.6	394	5.9
North Ostrobothnia	6,041	-2.4	6,607	33.9	3,511	13.0	12,302	24.4	6,304	-4.3	7,337	39.7
Kuusamo	1,148	82.2	2,197	112.5	1,856	5.8	5,068	83.7	259	-48.6	718	13.8
Oulu	4,291	-16.9	3,360	12.8	1,480	19.1	2,736	-8.8	5,632	2.3	3,247	60.8
Kainuu	875	-42.1	6,064	22.4	1,499	33.7	1,086	121.6	969	12.0	1,226	52.1
Kajaani	471	103.0	187	-19.4	225	106.4	247	30.7	143	-38.4	635	41.4
Lapland	22,242	49.7	124,153	9.3	41,304	-6.9	56,682	33.7	43,523	2.0	6,489	16.7
Rovaniemi	10,738	69.4	29,897	11.3	18,687	8.5	5,895	-1.9	9,614	-7.4	2,232	29.8
Åland	973	56.2	447	-1.3	214	89.4	390	54.8	2,449	45.6	3,297	13.8
Maarianhamina	894	73.3	318	-17.2	192	86.4	328	36.1	2,189	47.5	1,743	32.2

Appendix table 9.1. Capacity of accommodation establishments and capacity utilization by type of establishment in 2017

Whole year on average	Number of establishments	Number of rooms	Number of bed-places	Occupancy rate of bedrooms, %	Change of room occupancy rate, %-units	Room price, euros (incl. VAT 10 %)
All accommodation establishments	1,168	63,094	156,989	51.9	4.3	98.43
Hotels	621	52,207	114,695	55.9	3.4	101.26
Similar establishments	95	1,891	4,750	24.1	6.3	60.81
Holiday villages	315	7,138	30,133	35.3	19.7	67.41
Camping sites	137	1,859	7,412	31.2	6.7	.
Hostels	41	1,277	3,140	54.6	67.1	44.97

Appendix table 9.2. Capacity of accommodation establishments and capacity utilization by type of establishment, May-August 2017

May-August on average	Number of establishments	Number of rooms	Number of bed-places	Occupancy rate of bedrooms, %	Change of room occupancy rate, %-units	Room price, euros (incl. VAT 10 %)
All accommodation establishments	1,298	66,418	167,071	54.9	4.7	97.58
Hotels	629	52,724	115,598	60.0	3.9	100.82
Similar establishments	107	2,309	5,767	30.6	10.1	61.11
Holiday villages	354	8,130	33,372	35.4	18.8	62.68
Camping sites	208	3,255	12,335	35.1	4.0	.
Hostels	45	1,399	3,435	60.5	63.3	47.95

Appendix table 10.1. Capacity of accommodation establishments by type of establishment in 2017

	Establishments	Rooms	Bed-places	Caravan places
All accommodation establishments	1,383	68,834	170,092	20,253
Hotels	672	56,062	121,960	2,212
Residential hotel	35	1,333	3,720	44
Conference hotel	88	16,684	31,600	10
Spa	53	7,557	17,913	317
Holiday resort	163	7,756	17,740	1,066
Urban hotel	218	14,957	29,162	213
Other hotel	115	7,775	21,825	562
Similar establishments	115	2,249	5,602	441
Holiday villages	320	6,229	28,390	1,758
Camping sites	226	2,627	10,223	15,623
Hostels	50	1,667	3,917	219

Appendix table 10.2. Capacity of accommodation establishments by opening season in 2017

		Establishments	Rooms	Bed-places	Caravan places
All accommodation establishments	Total	1,383	68,834	170,092	20,253
	Open year-round	1,103	62,890	152,473	13,034
	Open part of the year	280	5,944	17,619	7,219
Hotels	Total	672	56,062	121,960	2,212
	Open year-round	632	53,940	117,357	2,119
	Open part of the year	40	2,122	4,603	93
Similar establishments	Total	115	2,249	5,602	441
	Open year-round	92	1,712	4,300	366
	Open part of the year	23	537	1,302	75
Holiday villages	Total	320	6,229	28,390	1,758
	Open year-round	246	5,121	24,178	1,244
	Open part of the year	74	1,108	4,212	514
Camping sites	Total	226	2,627	10,223	15,623
	Open year-round	92	741	3,372	9,129
	Open part of the year	134	1,886	6,851	6,494
Hostels	Total	50	1,667	3,917	219
	Open year-round	41	1,376	3,266	176
	Open part of the year	9	291	651	43

Appendix table 10.3. Capacity of accommodation establishments by number of bed-places in 2017

		Establishments	Rooms	Bed-places	Caravan places
All accommodation establishments	Total	1,383	68,834	170,092	20,253
	0 - 49	575	6,306	17,298	11,674
	50 - 99	352	8,899	24,167	4,070
	100 - 249	274	18,683	43,856	2,974
	250 -	182	34,946	84,771	1,535
Hotels	Total	672	56,062	121,960	2,212
	0 - 49	159	2,675	5,540	360
	50 - 99	155	5,325	11,220	691
	100 - 249	199	15,728	32,826	741
	250 -	159	32,334	72,374	420
Similar establishments	Total	115	2,249	5,602	441
	0 - 49	74	1,007	2,357	251
	50 - 99	32	831	2,054	158
	100 -	9	411	1,191	32
Holiday villages	Total	320	6,229	28,390	1,758
	0 - 49	172	1,449	5,361	705
	50 - 99	87	1,320	5,686	319
	100 -	61	3,460	17,343	734
Camping sites	Total	226	2,627	10,223	15,623
	0 - 49	146	924	3,301	10,325
	50 - 99	64	1,064	4,314	2,754
	100 -	16	639	2,608	2,544
Hostels	Total	50	1,667	3,917	219
	0 - 49	24	251	739	33
	50 - 99	14	359	893	148
	100 -	12	1,057	2,285	38

Appendix table 10.4. Capacity of accommodation establishments by number of rooms in 2017

		Establishments	Rooms	Bed-places	Caravan places
All accommodation establishments	Total	1,383	68,834	170,092	20,253
	0 - 19	652	6,681	24,355	14,044
	20 - 49	348	10,599	28,573	3,895
	50 - 99	172	12,368	28,596	1,786
	100 -	211	39,186	88,568	528
Hotels	Total	672	56,062	121,960	2,212
	0 - 19	115	1,596	3,990	310
	20 - 49	212	6,720	15,134	970
	50 - 99	151	10,965	23,684	542
	100 -	194	36,781	79,152	390
Similar establishments	Total	115	2,249	5,602	441
	0 - 19	70	840	2,403	237
	20 - 49	40	1,129	2,670	194
	50 -	5	280	529	10
Holiday villages	Total	320	6,229	28,390	1,758
	0 - 19	243	2,263	10,369	876
	20 - 49	56	1,623	6,937	625
	50 -	21	2,343	11,084	257
Camping sites	Total	226	2,627	10,223	15,623
	0 - 19	198	1,706	6,738	12,584
	20 - 49	25	669	2,537	1,952
	50 -	3	252	948	1,087
Hostels	Total	50	1,667	3,917	219
	0 - 19	26	276	855	37
	20 - 49	15	458	1,295	154
	50 -	9	933	1,767	28

Inquiries

Marjut Tuominen 029 551 3556

Ossi Nurmi 029 551 2984

Director in charge:

Sami Saarikivi

liikenne.matkailu@stat.fi

www.stat.fi

Source: Accommodation Statistics. Statistics Finland