

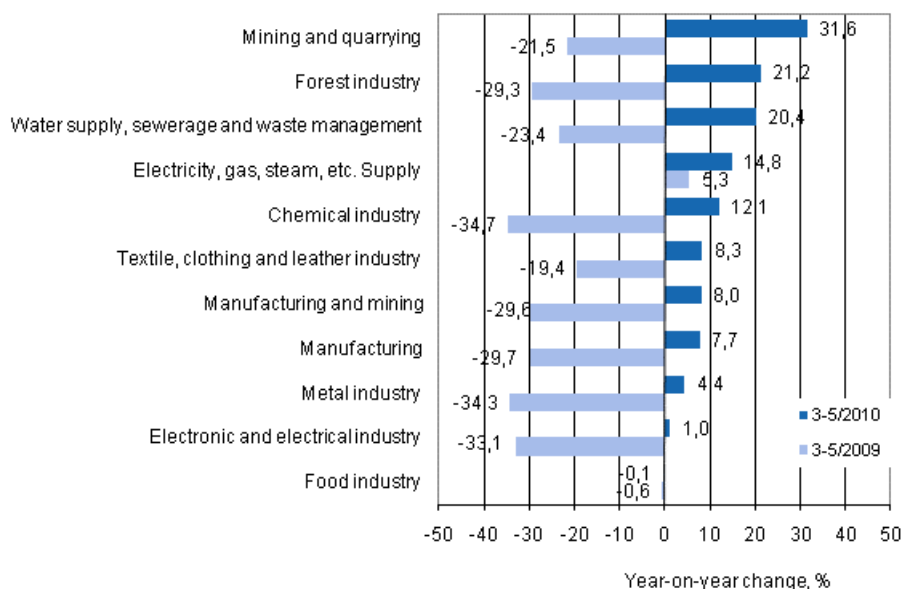
Index of turnover in industry

2010, May

Turnover in manufacturing grew by nearly 8 per cent in March to May from the year before

According to Statistics Finland, in the March to May period of 2010 turnover in manufacturing was 7.7 per cent higher than in the corresponding period of the year before. Domestic sales grew by 7.2 per cent and export turnover by 8.2 per cent from one year ago.

Annual change in turnover in selected manufacturing industries during 3–5/2010, % (TOL 2008)



Source: Statistics Finland

Turnover went up from the corresponding period of the previous year in nearly all sub-industries. The largest growths were seen in mining and quarrying (31.6%), in the forest industry (21.2%) and in water supply, sewerage, waste management and remediation activities (20.4%). In the food industry turnover was unchanged from the previous year (-0.1%).

The index of turnover in industry describes enterprises whose main industry is manufacturing. The calculation of the indices is based on the Tax Administration's value added tax data which are supplemented with data obtained with Statistics Finland's sales inquiry. The monthly turnovers of manufacturing enterprises can vary considerably, especially in the metal industries. The variation is mainly due to invoicing practices. The final invoice for major machinery deliveries and projects may be recorded in the sales of one month, even if the delivery had required the work of several months or years.

Contents

Tables

Appendix tables

Appendix table 1. Three-month moving change, cumulative change and change in the latest month, year-on-year, % (TOL 2008).....	4
--	---

Figures

Appendix figures

Appendix figure 1. Trend series on total turnover, domestic turnover and export turnover in manufacturing 1/1995–5/2010.....	5
Appendix figure 2. Trend series on total turnover, domestic turnover and export turnover in the forest industry 1/1995–5/2010.....	5
Appendix figure 3. Trend series on total turnover, domestic turnover and export turnover in the chemical industry 1/1995–5/2010.....	6
Appendix figure 4. Trend series on total turnover, domestic turnover and export turnover in the electronic and electrical industry 1/1995–5/2010.....	6

Appendix tables

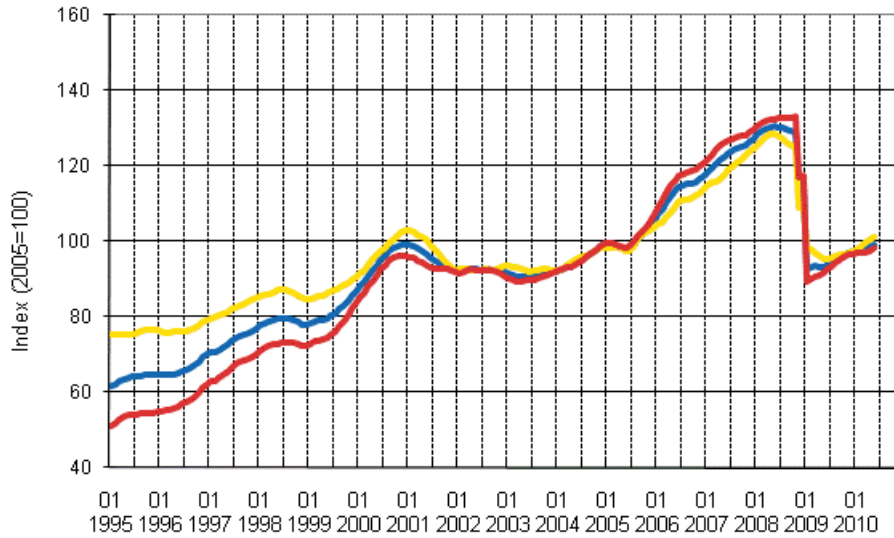
Appendix table 1. Three-month moving change, cumulative change and change in the latest month, year-on-year, % (TOL 2008)

	Year-on-year change by three-month period, % ¹⁾				Cumulative year-on-year change, % ¹⁾	Year-on-year change in the latest month, % ¹⁾
	06-08/2009	09-11/2009	12/09-02/10	03-05/2010	01-05/2010	05/2010
Manufacturing (C)	-26,5	-21,7	-2,2	7,7	5,7	13,2
Food industry (10-12)	-2,3	-4,0	-3,2	-0,1	-1,7	3,1
Textile and clothing industry (13-15)	-10,4	-12,5	-4,4	8,3	3,1	11,6
Forest industry (16-17)	-26,2	-17,8	5,6	21,2	16,2	35,7
Chemical industry (19-22)	-32,2	-16,1	15,9	12,1	16,9	9,6
Electronic and electrical industry (26-27)	-25,0	-41,7	-0,6	1,0	3,5	5,4
Metal industry (24-30)	-30,4	-27,9	-8,2	4,4	1,6	10,1
Mining and quarrying (B)	-17,7	-8,1	14,6	31,6	26,1	36,7
Electricity, gas, steam, etc. supply (D)	-15,2	-14,4	25,3	14,8	24,4	13,8
Water supply, sewerage and waste management (E)	-20,8	-6,4	1,8	20,4	15,1	26,2

1) Year-on-year change compares the value for an examined time period to the value for the corresponding time period twelve months back.

Appendix figures

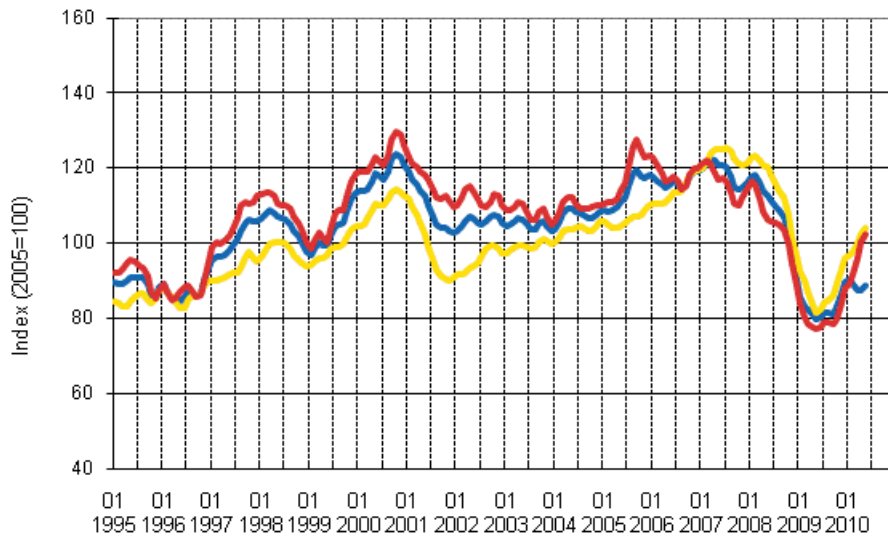
Appendix figure 1. Trend series on total turnover, domestic turnover and export turnover in manufacturing 1/1995–5/2010



Source: Statistics Finland



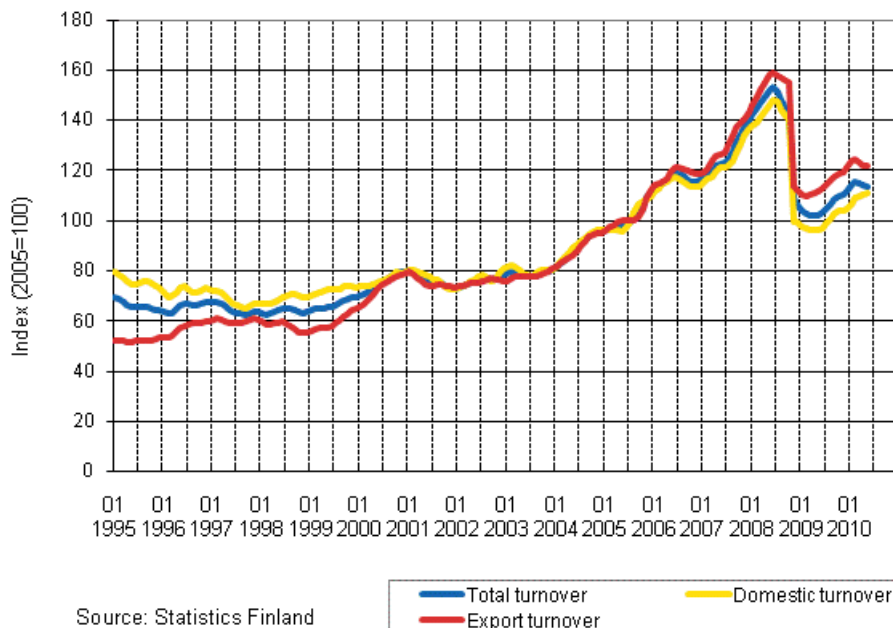
Appendix figure 2. Trend series on total turnover, domestic turnover and export turnover in the forest industry 1/1995–5/2010



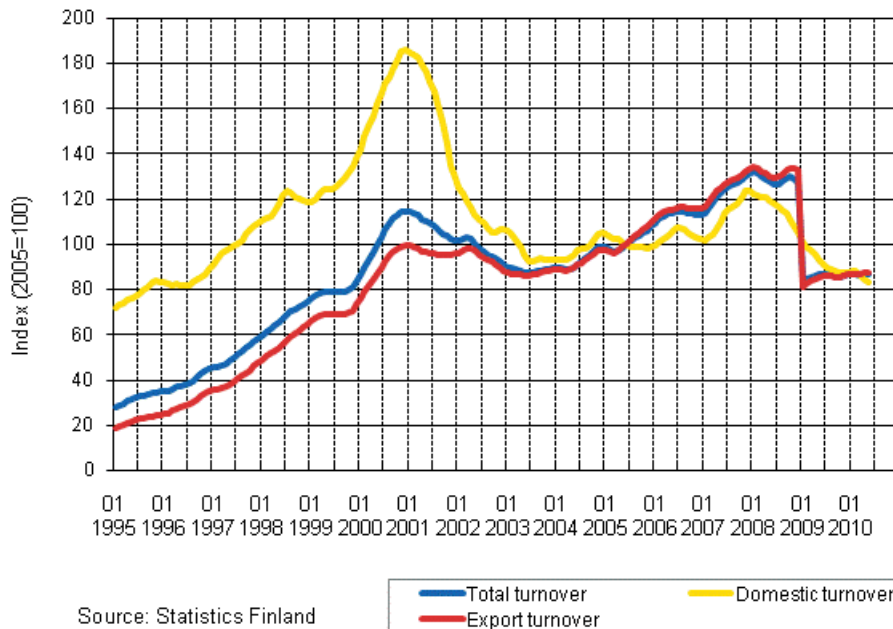
Source: Statistics Finland



Appendix figure 3. Trend series on total turnover, domestic turnover and export turnover in the chemical industry 1/1995–5/2010



Appendix figure 4. Trend series on total turnover, domestic turnover and export turnover in the electronic and electrical industry 1/1995–5/2010



Suomen virallinen tilasto
Finlands officiella statistik
Official Statistics of Finland

Manufacturing 2010

Inquiries

Ulla Virtanen (09) 1734 3331

Kirsi-Maaria Manninen (09) 1734 2681

Director in charge:

Hannele Orjala

volyyimi.indeksi@stat.fi

www.stat.fi